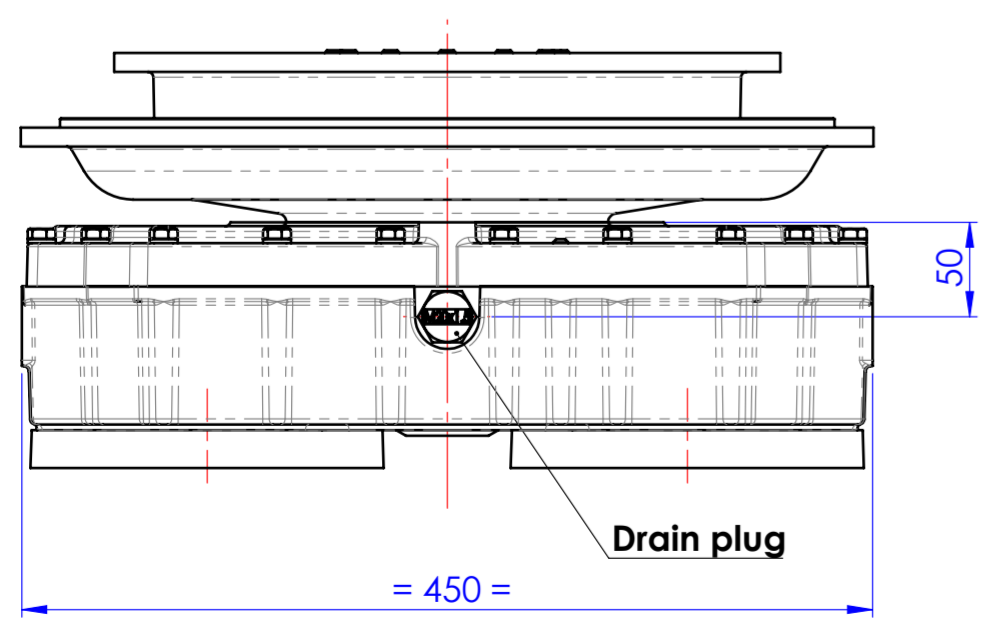
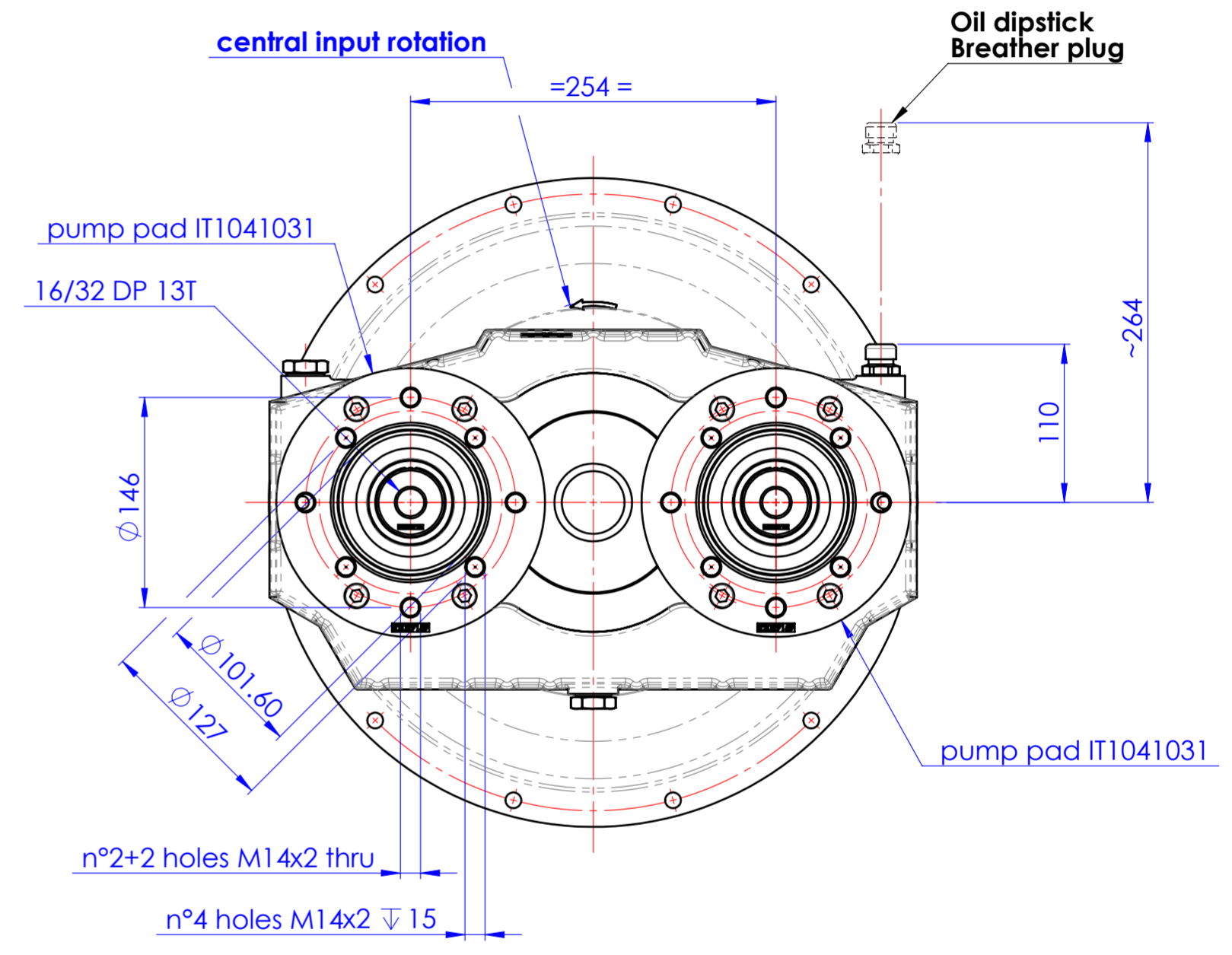
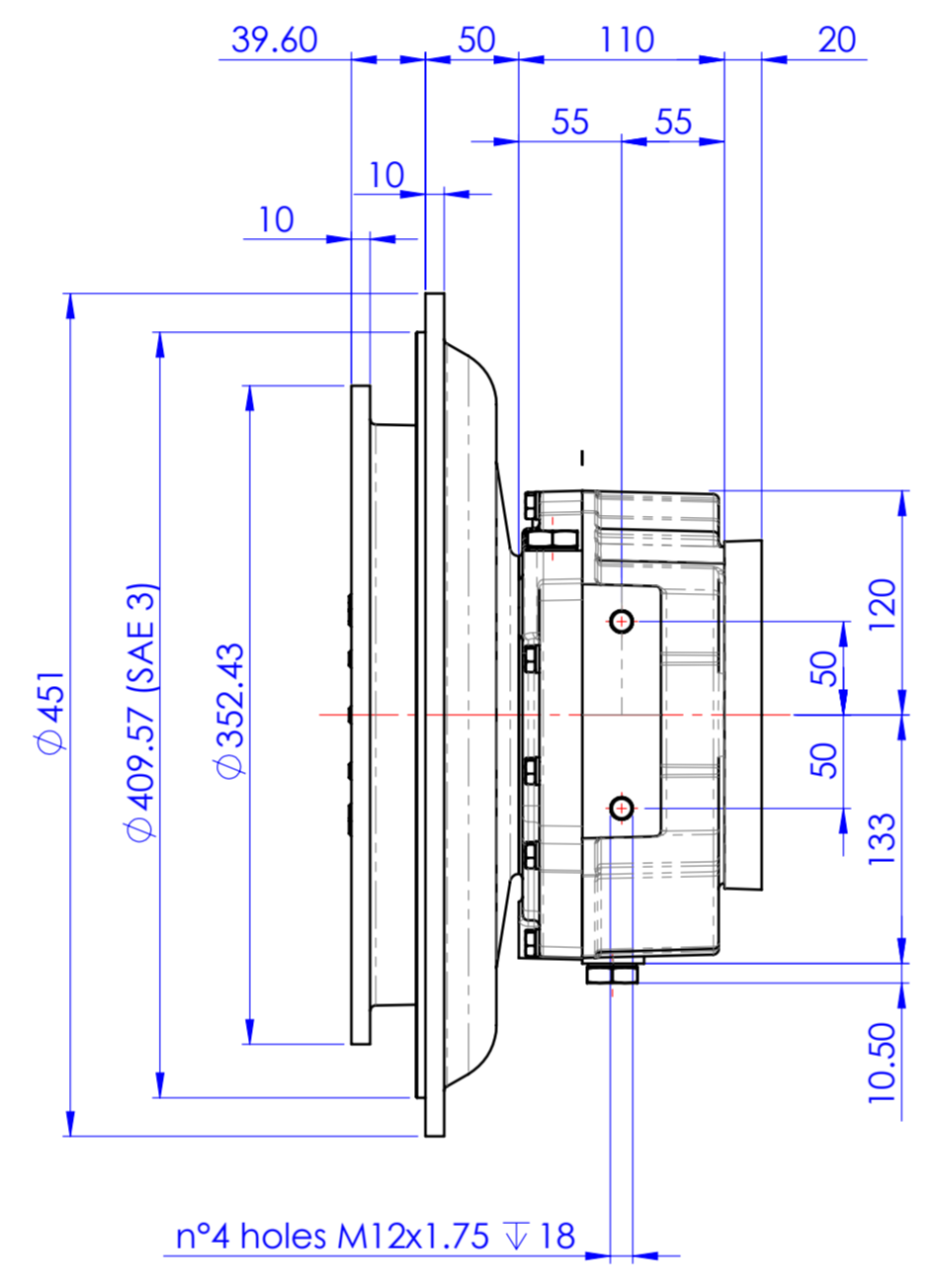
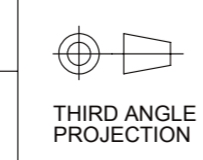


Input assy IT1071048B housing SAE 3 flywheel 11.5"



Drawing and 3D model are valid for all ratios

PRIMO UTILIZZO MONTAGGIO/FIRST USE ASSEMBLY:
 PRIMO IMPIEGO MODELLO/FIRST USE MODEL:
 SIMILE A/SIMILAR TO:
METRIC



MODELLO / MADE FROM:
 PESO / WEIGHT: kg
 WR: kg·m²
 TOLL. GEN. DILAVORAZIONE H13 FORO - H13 ALBERO 14 DIMENSIONI LINEARI
 * 15' fino Ø200 * 10' fino Ø500

MATERIALE / MATERIAL:
 TRATT. TERMICO / HEAT TREAT:
 TRATT. SUP. / SURFACE TREATMENT:
 DESCRIZIONE:
INGOMBRO AM216 BOM 46278

DATA / DATE:
 07/26/2017
 SCALA / SCALE:
 1:4
 DIS / DRAWN:
 PR
 VERIF. / CHECK:
 GG
 APPROVATO/APP:
 DAJ
 DESCRIPTION:
INSTALLATION PUMP DRIVE AM216 BOM 46278

INDIC. MODIF. / REV.	NDWF-4000261	07/31/2017
MODIFICA / CHANGE NO.		DATA / DATE
TWIN(DISC)		
DECIMA - ITALY		
1029013L		
FORMATO / SIZE: A2	FOGLIO / SHEET: 1 OF 1	INDIC. MODIF. / REV.

D

C

B

A