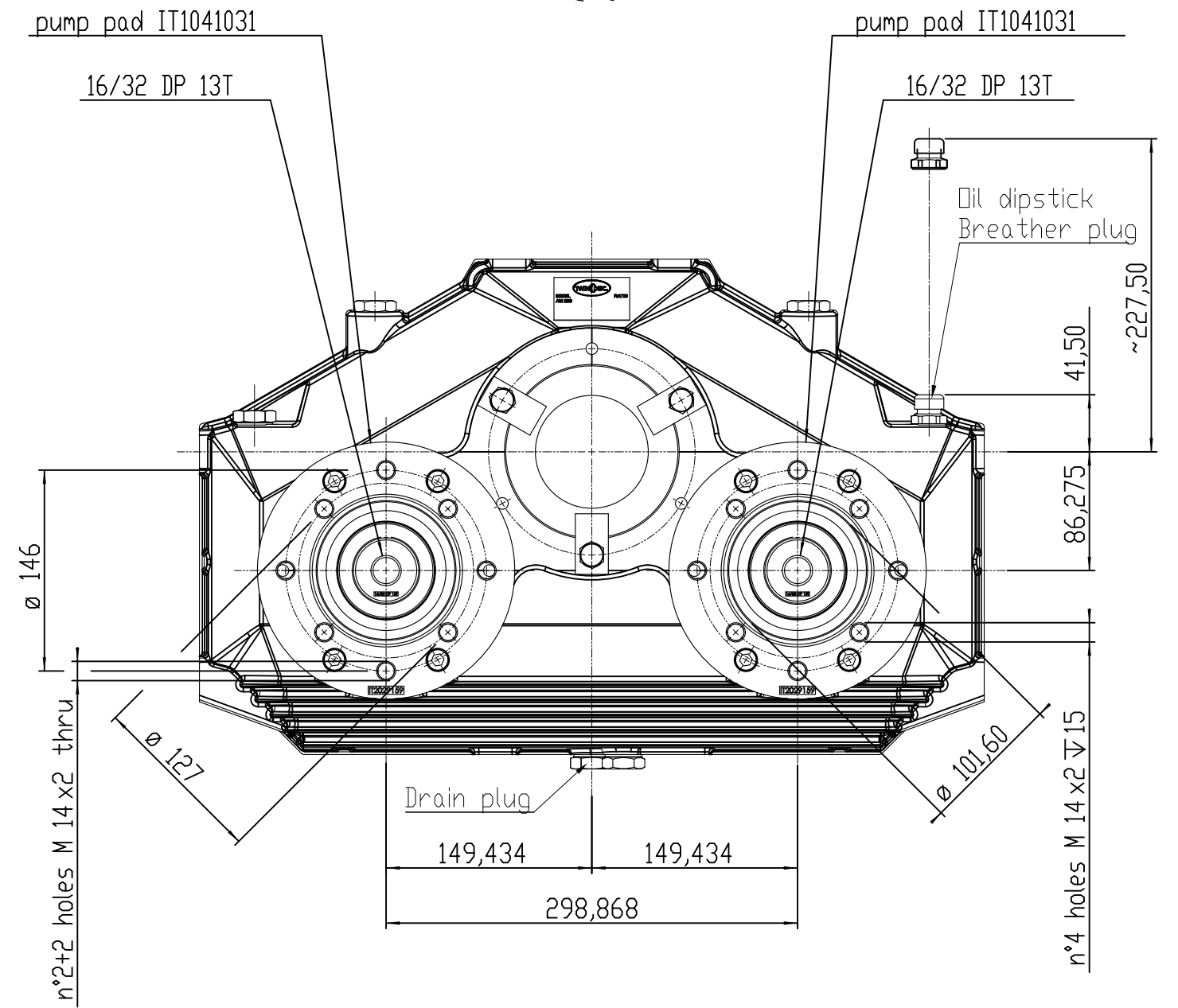
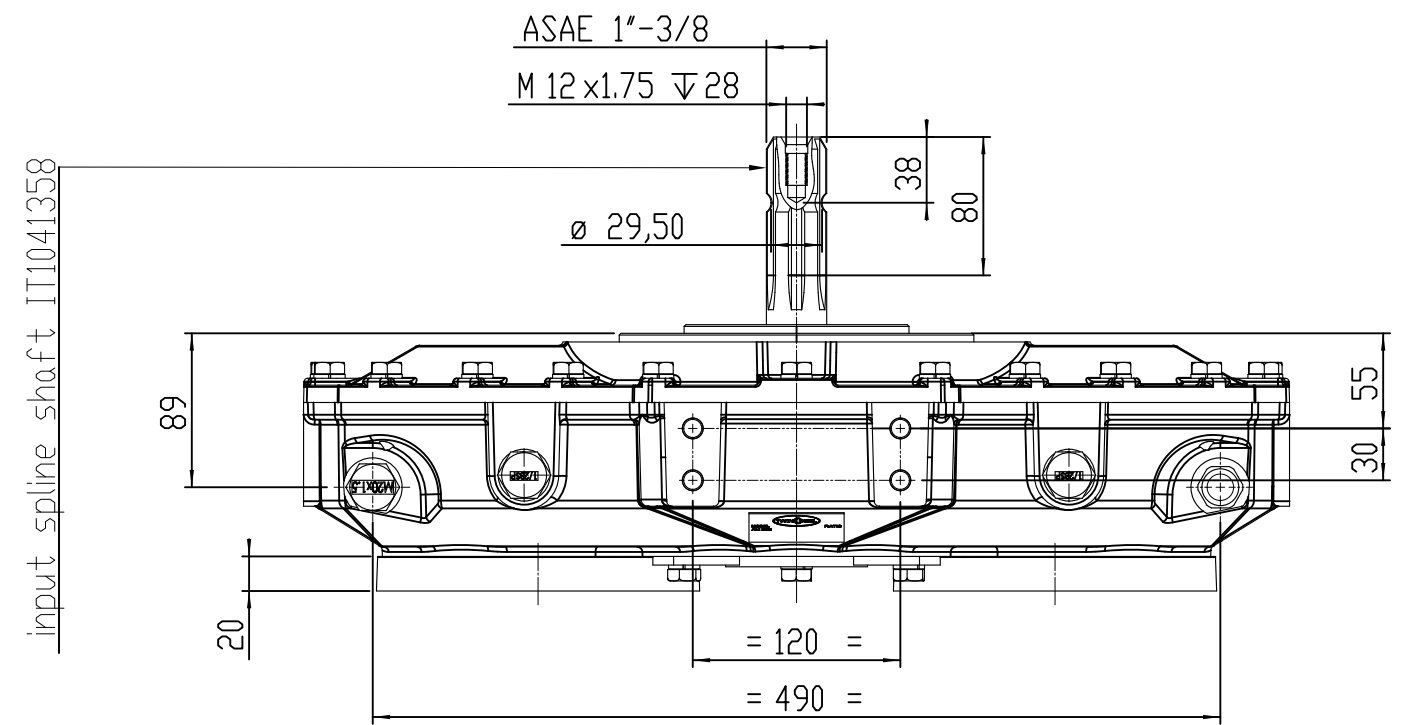
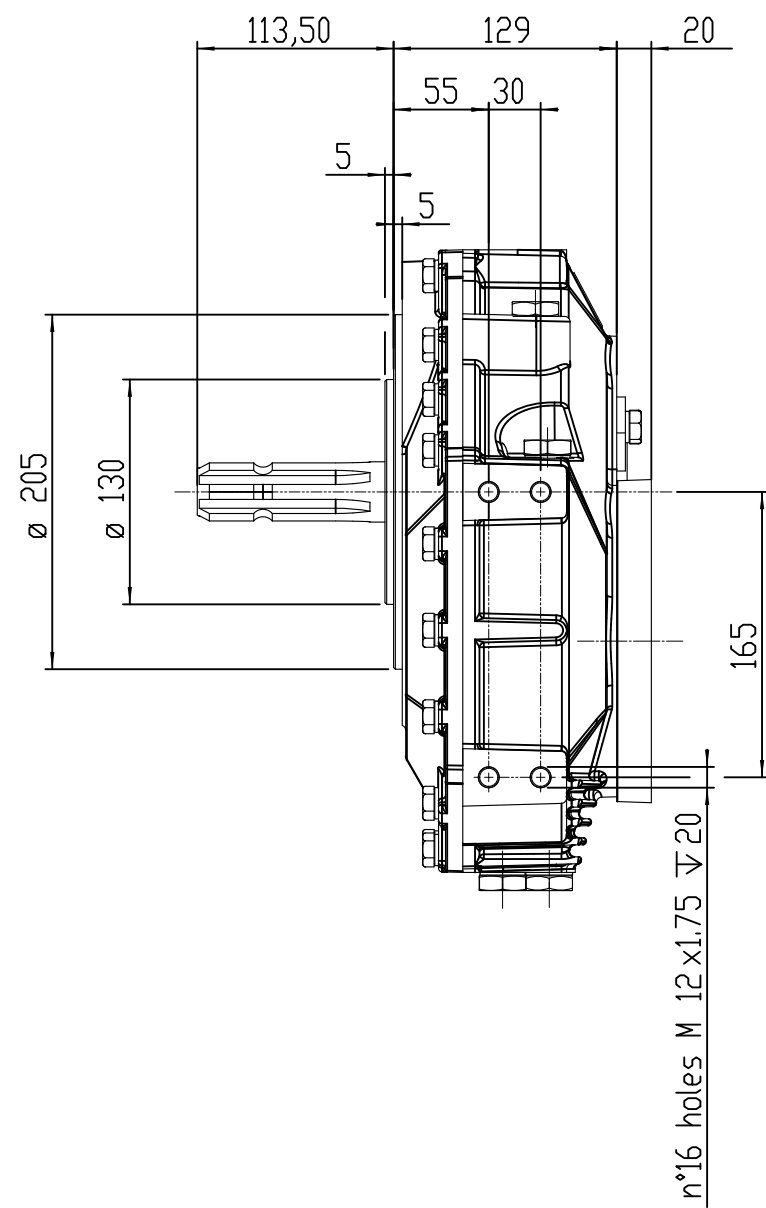
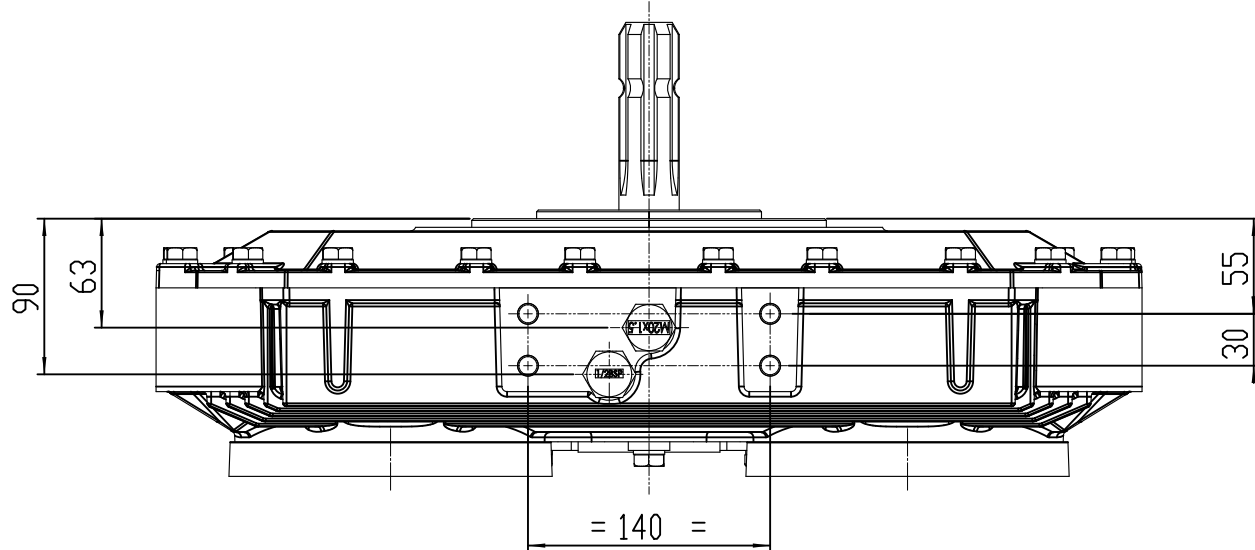
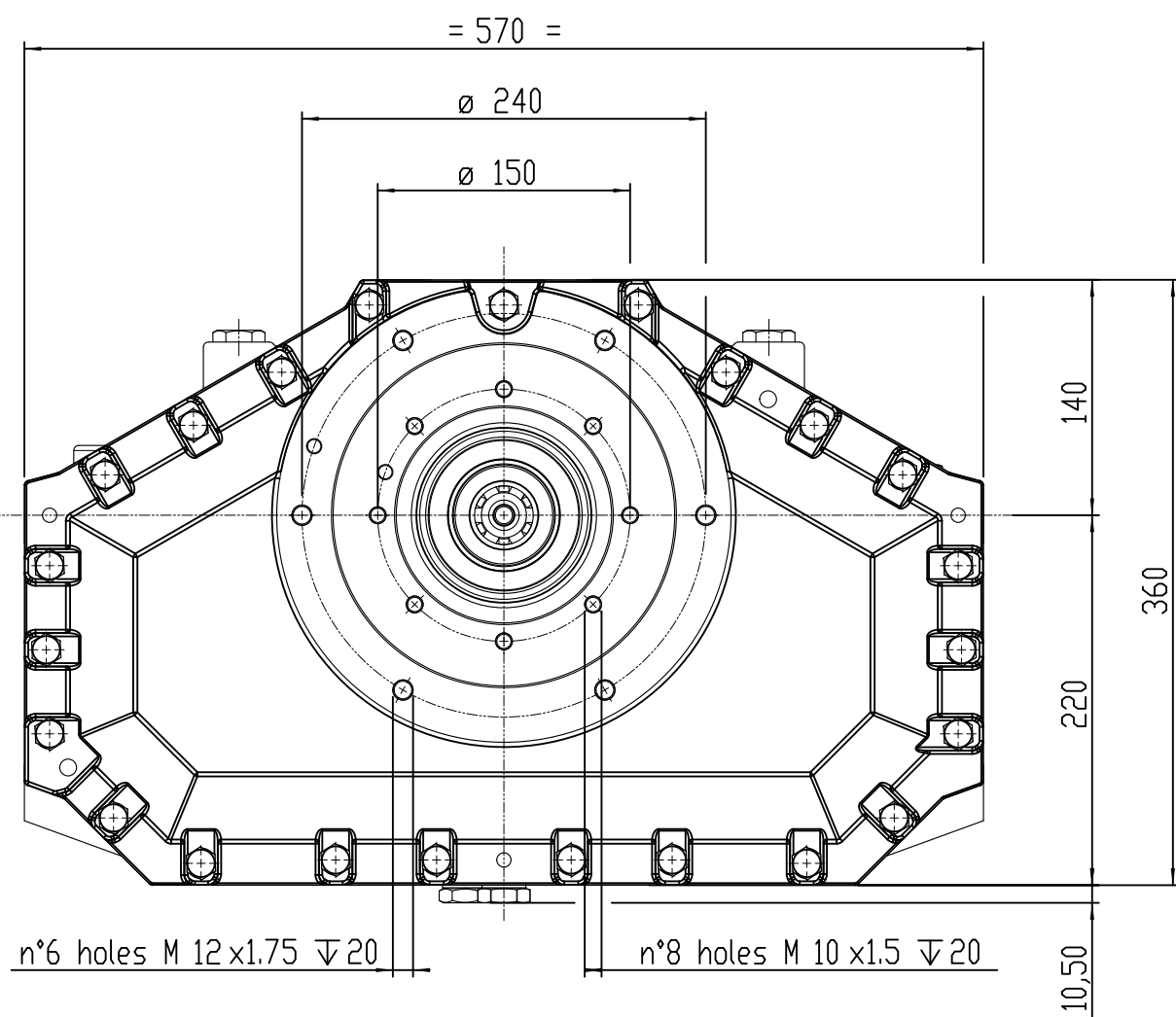


central input rotation



Drawing and 3D model are valid for all ratios

FIRST USE ASSEMBLY:	WEIGHT:	kg	THIRD ANGLE PROJECTION	MATERIAL:	DATE:
FIRST USE MODEL:	kg · m ³				01-Jul-15
STIMILAR TED:					SCALE:
					1:4
					DRAWN BY:
					Rosso
					CHECKED BY:
					Guzzinati
					APPROVED BY:
					Guzzinati
<p>UNLESS OTHERWISE SPECIFIED MACHINED DIMENSIONS</p> <p>I ± 0,75</p> <p>II ± 0,25</p> <p>III ± 0,15</p> <p>ALL ANGULAR TOLERANCES: 1°</p> <p>GEOMETRIC TOLERANCING PER ASME Y14.5M 1994</p>				<p>HEAT TREAT:</p>	
<p>NOTICE: THIS PRINT CONTAINS PROPRIETARY INFORMATION AND IS NOT TO BE USED IN ANY MANNER BE NEARLY TO THE INTEREST OF TWIN DISC, INCORPORATED.</p> <p>THIS NOTICE IS NOT INTENDED TO WAIVE OR LIMIT RIGHTS GRANTED TO THE U.S. GOVERNMENT OR OTHERS BY CONTRACT.</p>				<p>DESCRIPTION:</p> <p>Installation pump drive, AM 220 BOM n°1029014G</p>	
				<p>TWIN DISC SRL - ITALY</p> <p>1029015D</p>	
				<p>DWG SIZE: A2 SHEET: 1 OF 1 REV: -</p>	