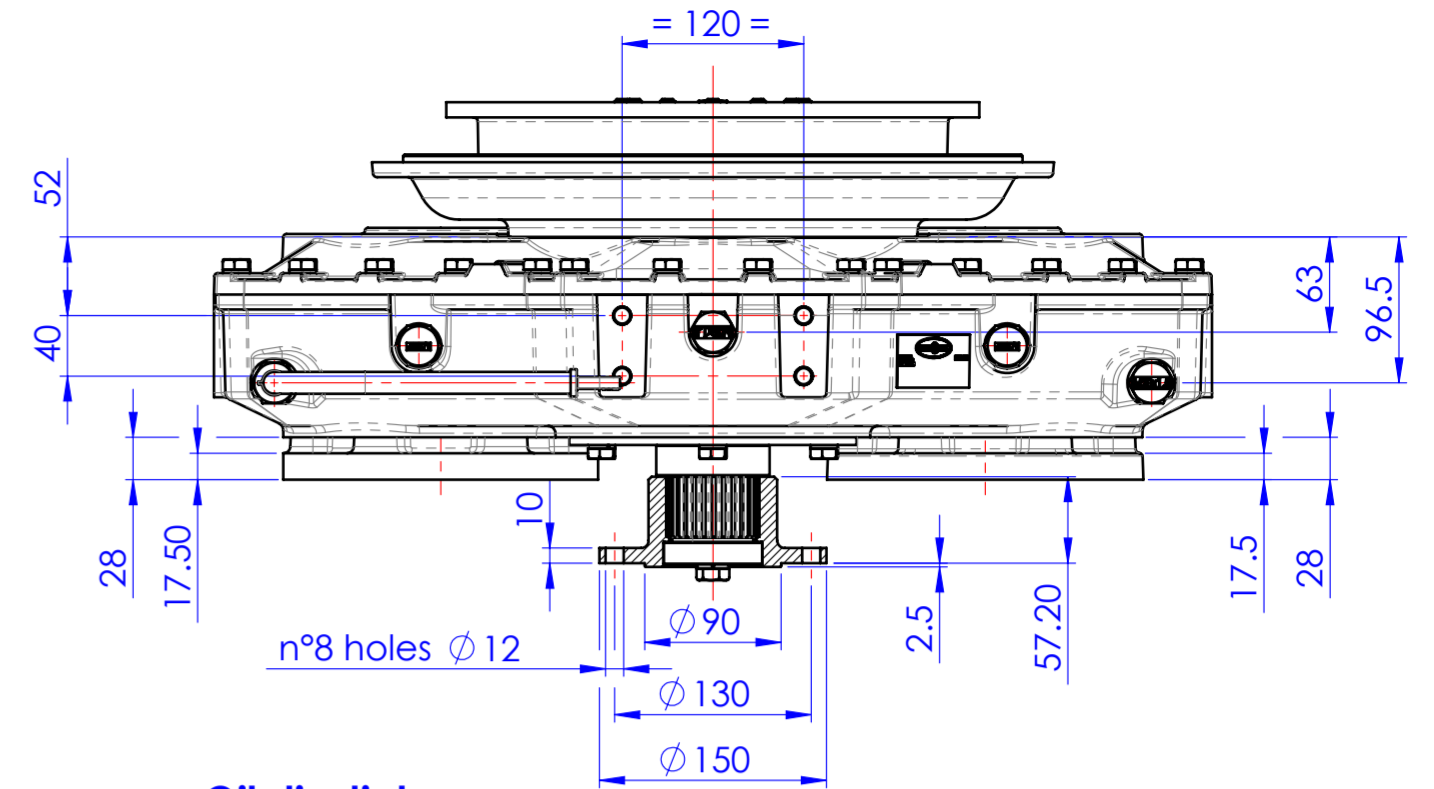
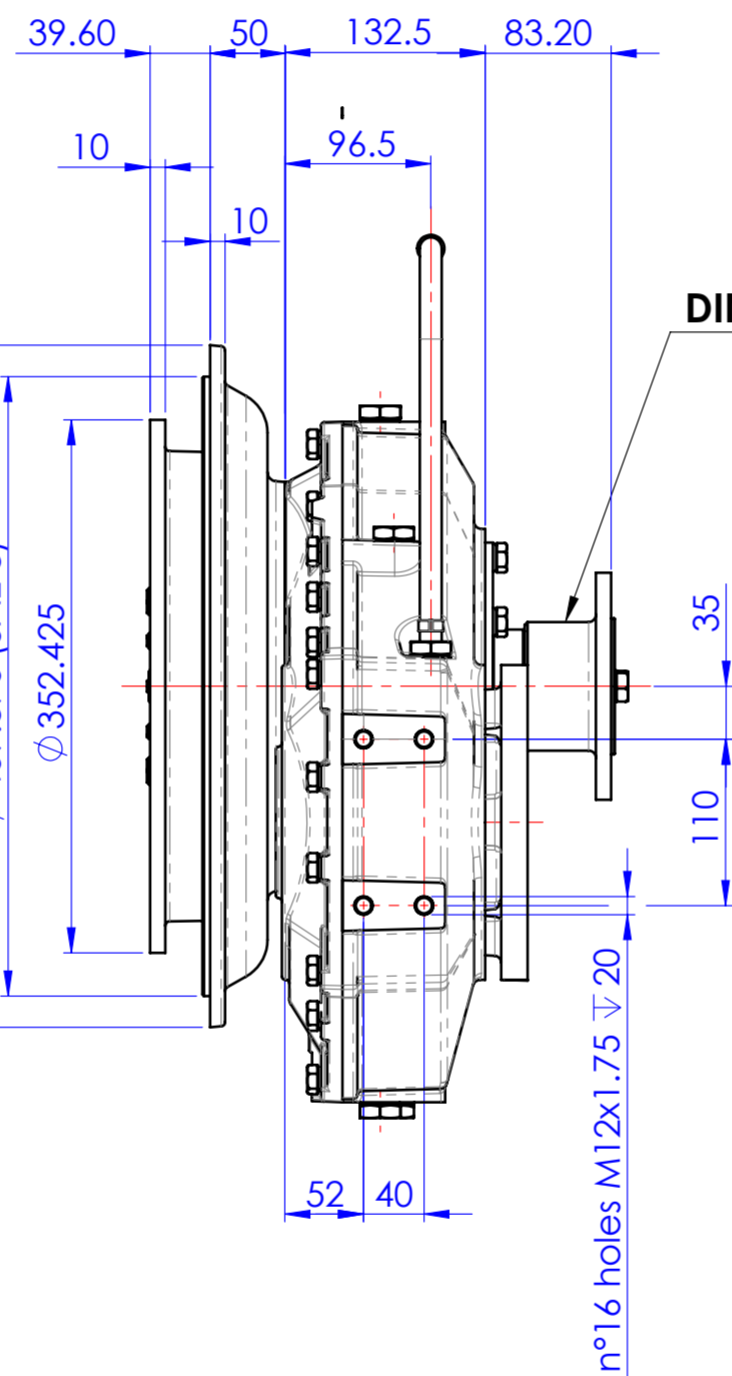
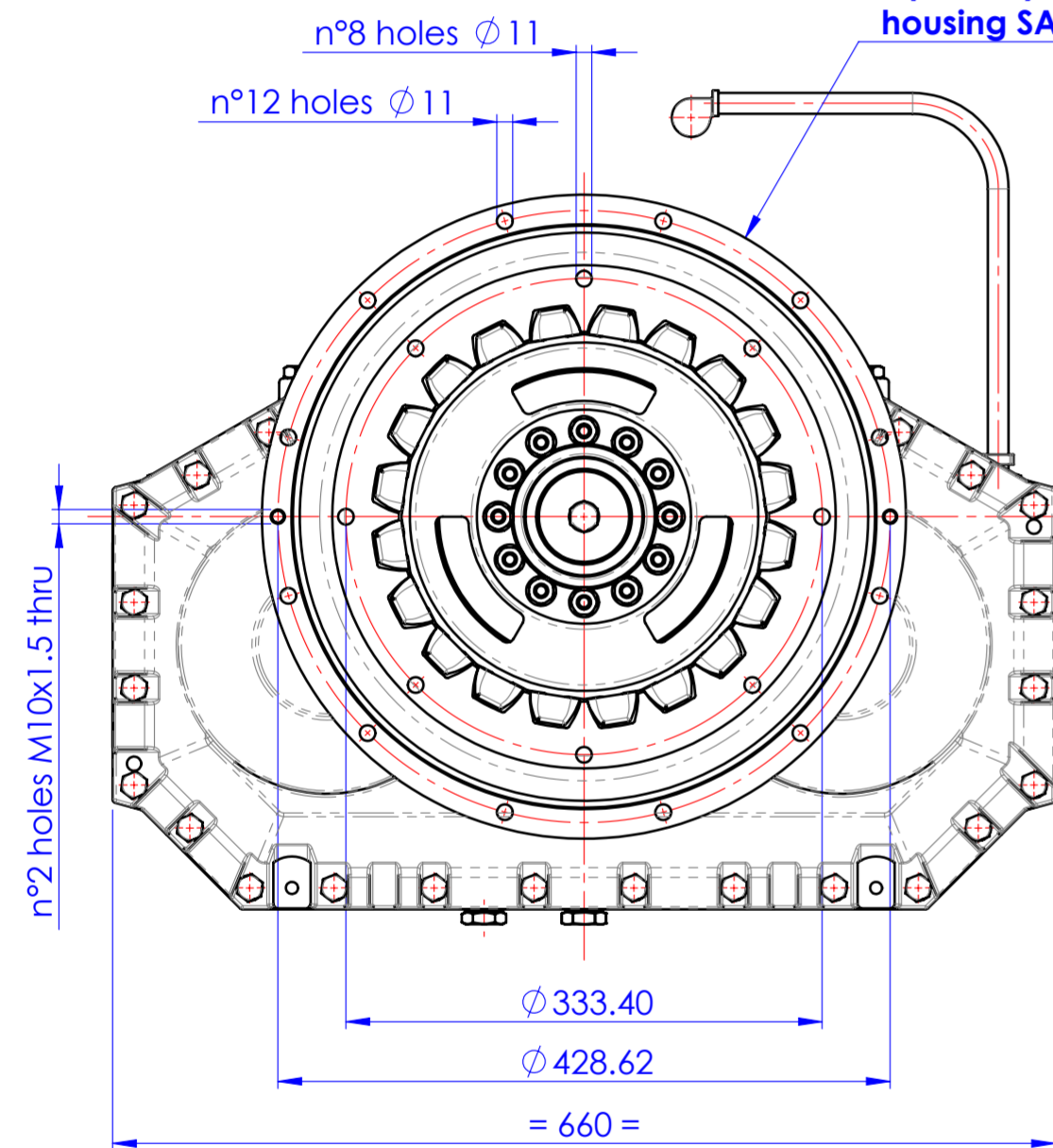


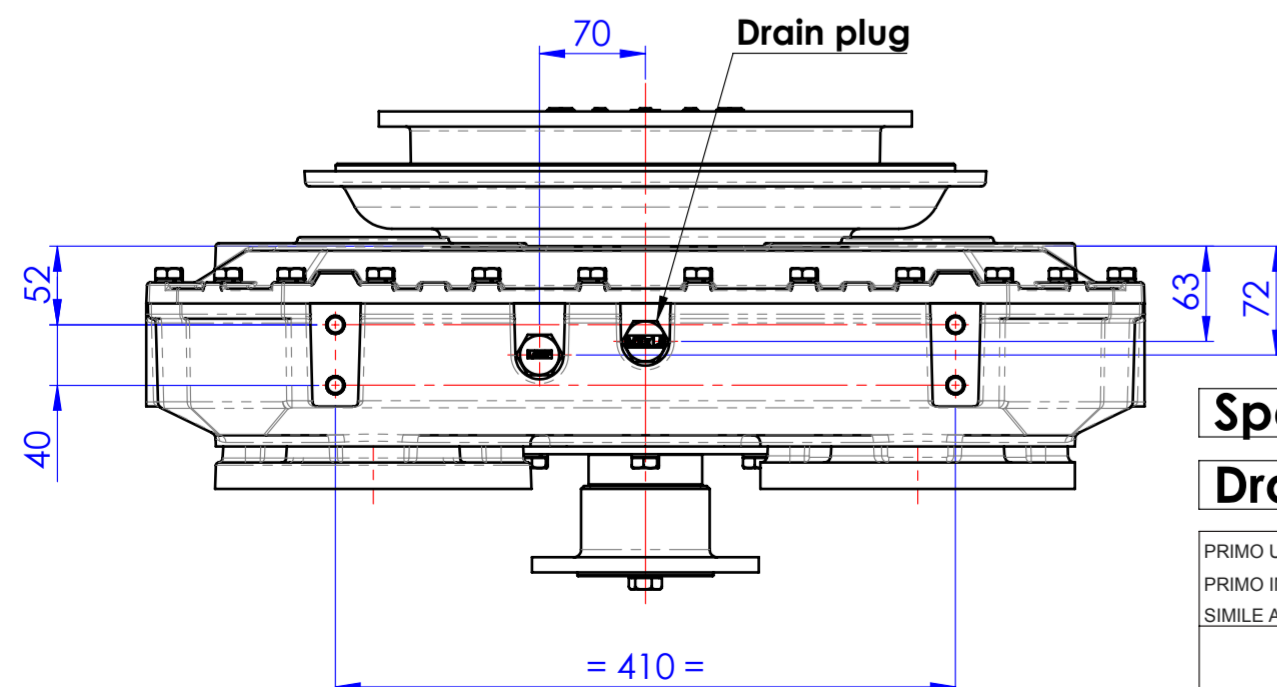
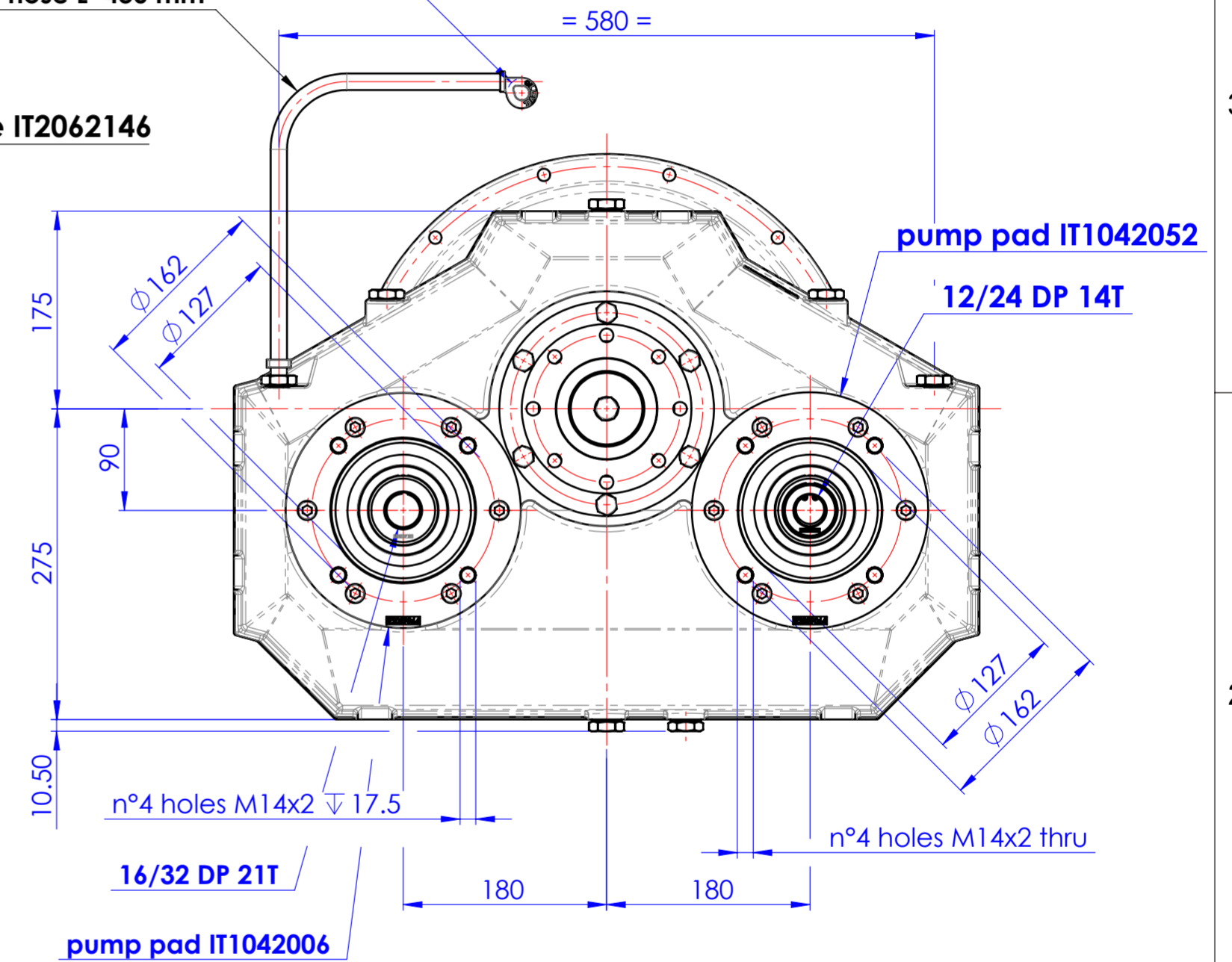
central input rotation

input assy IT1071030B
housing SAE 3 flywheel 11.5"



Kit IT1054014
flexible hose L=430 mm

Oil dipstick



Special application: breather plug to be added by customer

Drawing and 3D model are valid for all ratios

PRIMO UTILIZZO MONTAGGIO/FIRST USE ASSEMBLY:
PRIMO IMPIEGO MODELLO/FIRST USE MODEL:
SIMILE A/SIMILAR TO:

METRIC

NOTICE! THIS PRINT CONTAINS PROPRIETARY INFORMATION AND IS NOT TO BE USED IN ANY MANNER DETRIMENTAL TO THE INTEREST OF TWIN DISC, INCORPORATED. THIS NOTICE IS NOT INTENDED TO NULLIFY OR LIMIT RIGHTS GRANTED TO THE U.S. GOVERNMENT OR OTHERS BY CONTRACT.



MODELLO / MADE FROM:

PESO / WEIGHT: kg
WR: kg·m²
TOLL. GEN. DILAVORAZIONE H13 FORO - H13 ALBERO 1/14 DIMENSIONI LINEARI
+15' fino $\phi 200$ +10' fino $\phi 500$

MATERIALE / MATERIAL:

TRATT. TERMICO / HEAT TREAT:

DESCRIZIONE:
INGOMBRO
AM230 BOM 1029016P

TRATT. SUP. / SURFACE TREATMENT:

DESCRIPTION:
INSTALLATION
PUMP DRIVE AM230 BOM 1029016P

DATA / DATE:
05/12/2017
SCALA / SCALE:
1:5

DIS / DRAWN:
PR
VERIF. / CHECK:
GG
APPROVATO/APP:
DAJ

INDIC. MODIF. / REV.:
NDWF-4000209 05/18/2017
MODIFICA / CHANGE NO. DATA / DATE



DECIMA - ITALY

1029017K

FORMATO / SIZE: A2
FOGLIO / SHEET: 1 OF 1
INDIC. MODIF. / REV.: -

D

C

B

A