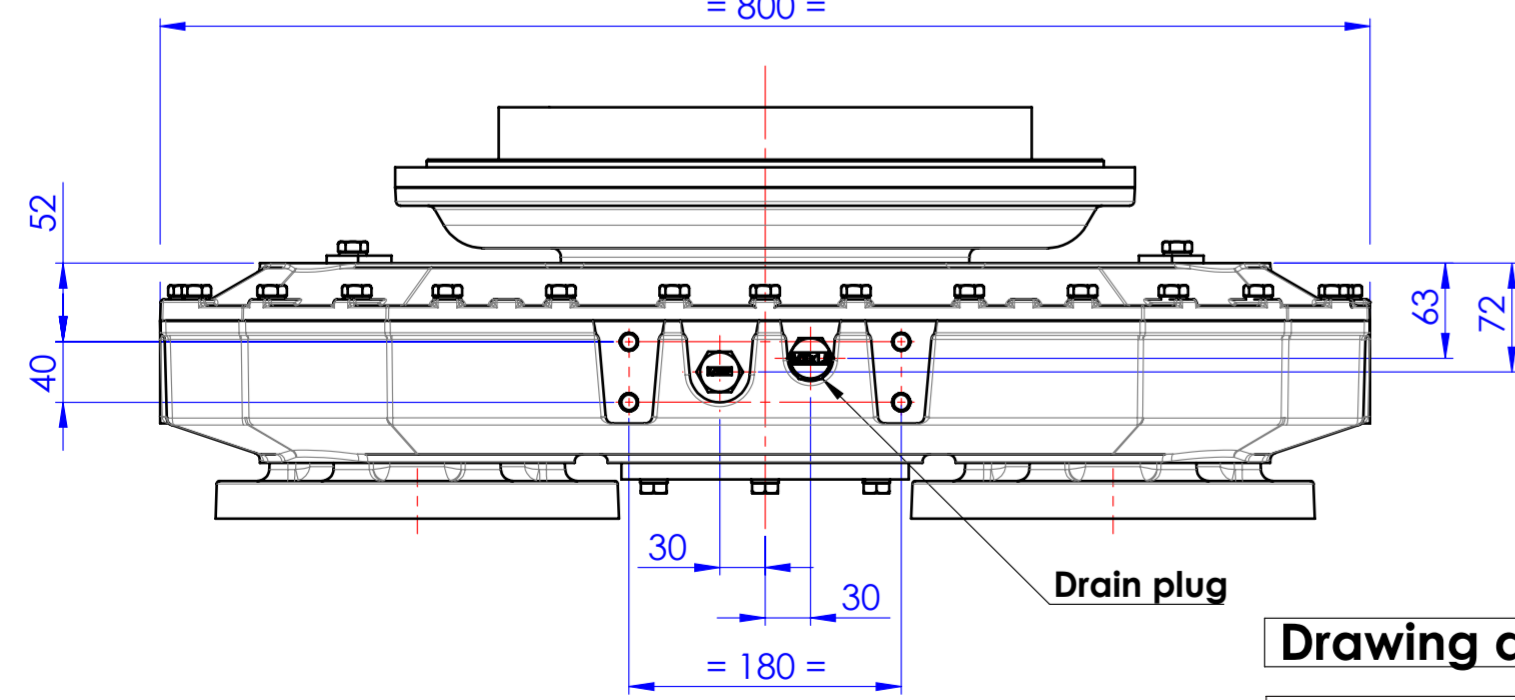
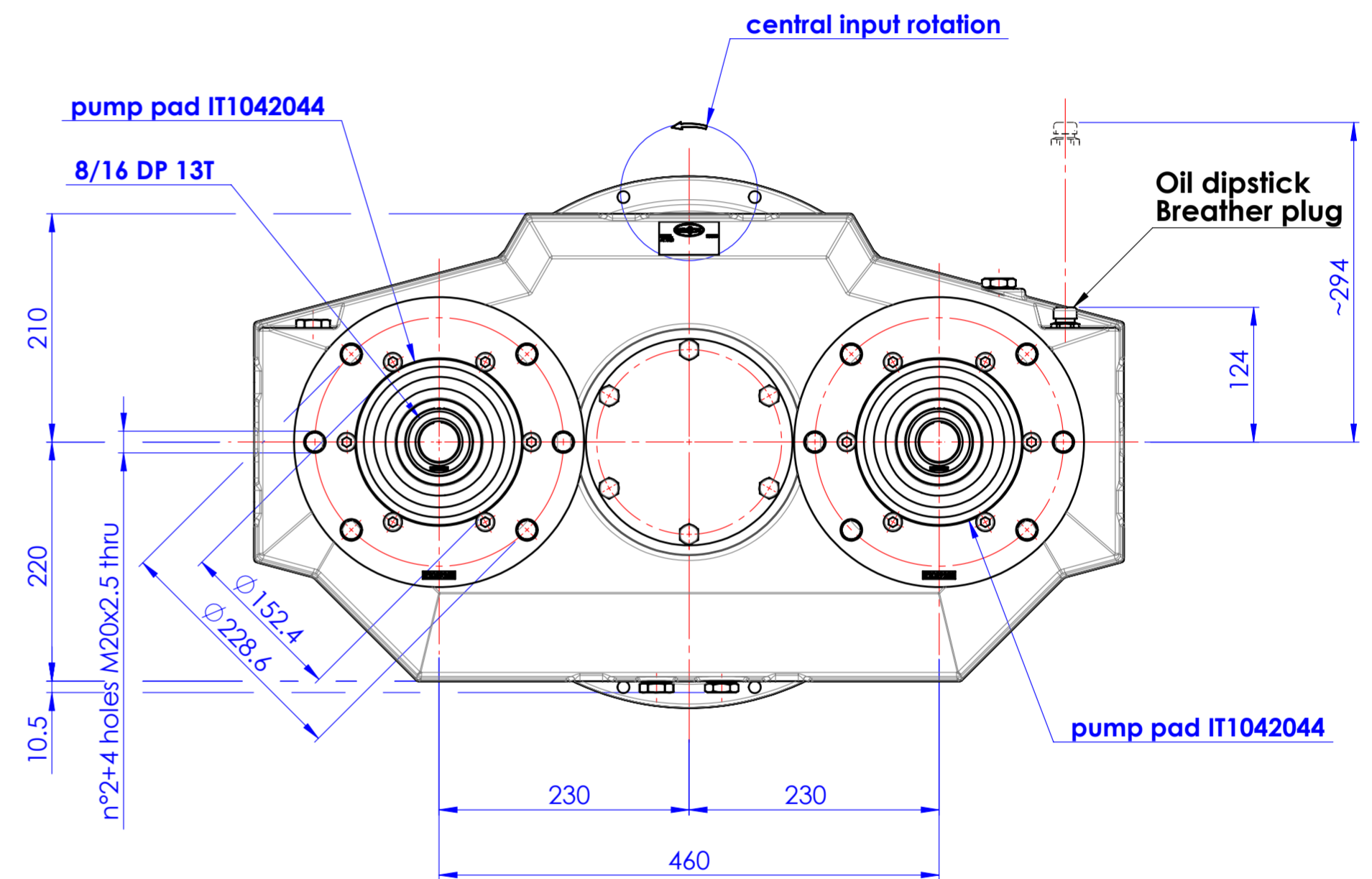
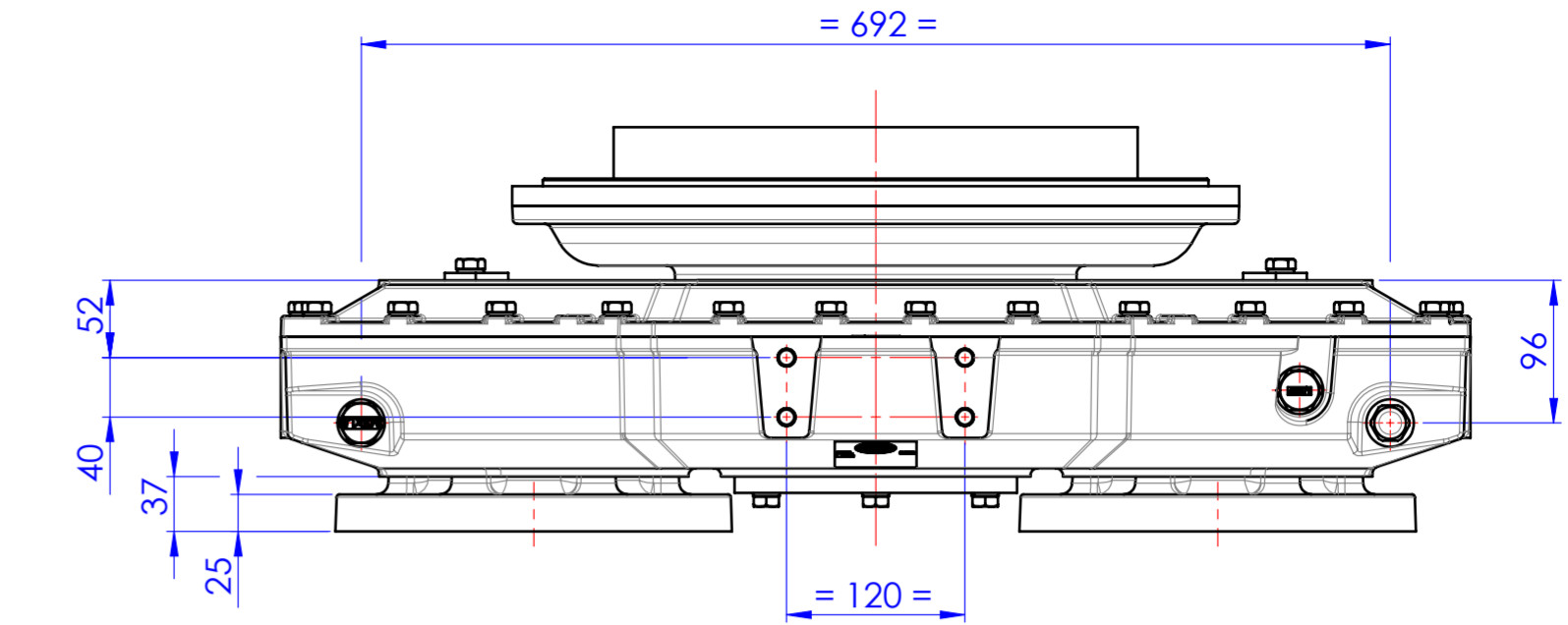
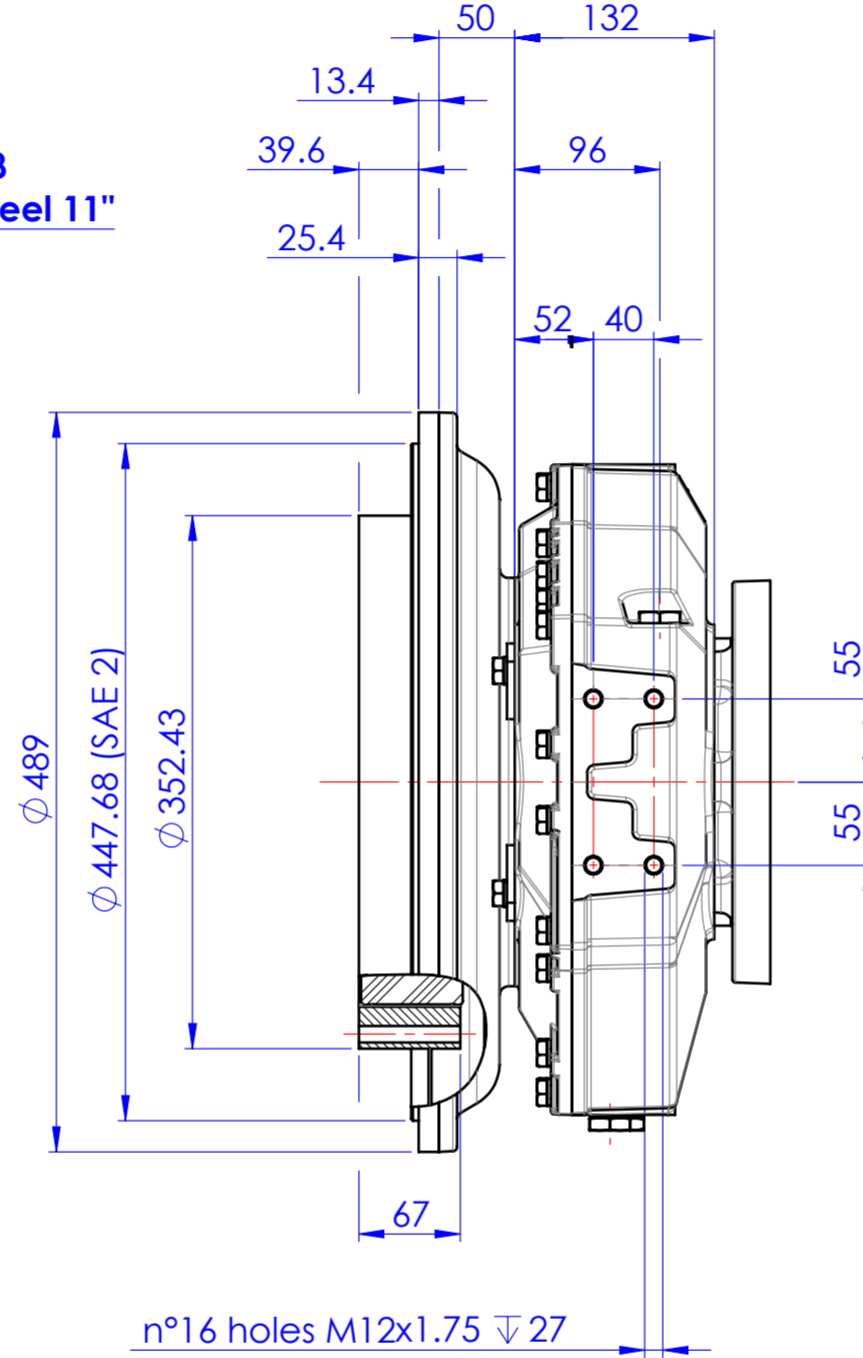


input assy IT1071088  
housing SAE 2 flywheel 11"



**Drawing and 3D model are valid for all ratios**

PRIMO UTILIZZO MONTAGGIO/FIRST USE ASSEMBLY:  
PRIMO IMPIEGO MODELLO/FIRST USE MODEL:  
SIMILE A/SIMILAR TO:

**METRIC**

NOTICE! THIS PRINT CONTAINS PROPRIETARY INFORMATION AND IS NOT TO BE USED IN ANY MANNER DETRIMENTAL TO THE INTEREST OF TWIN DISC, INCORPORATED. THIS NOTICE IS NOT INTENDED TO NULLIFY OR LIMIT RIGHTS GRANTED TO THE U.S. GOVERNMENT OR OTHERS BY CONTRACT.



MODELLO / MADE FROM:  
MATERIALE / MATERIAL:

PESO / WEIGHT: kg  
WR: kg-m<sup>3</sup>

TOLL. GEN. DILAVORAZIONE  
H13 FORO - H13 ALBERO  
14 DIMENSIONI LINEARI  
+15' fino  $\varnothing 200$  +10' fino  $\varnothing 500$

TRATT. TERMICO / HEAT TREAT:  
TRATT. SUP. / SURFACE TREATMENT:

DESCRIZIONE:  
INGOMBRO  
AM232 BOM 1029018T

DATA / DATE:  
12/22/2017  
SCALA / SCALE:  
1:5  
DIS / DRAWN:  
PR  
VERIF. / CHECK:  
GG  
APPROVATO/APP.  
DAJ

DESCRIPTION:  
INSTALLATION  
PUMP DRIVE AM232 BOM 1029018T

INDIC. MODIF. / REV.	NDWF-4000355	01/02/2018
MODIFICA / CHANGE NO.		DATA / DATE
<b>TWIN(DISC)</b>		
DECIMA - ITALY		
<b>1029019R</b>		
FORMATO / SIZE: A2	FOGLIO / SHEET: 1 OF 1	INDIC. MODIF. / REV.

D

C

B

A