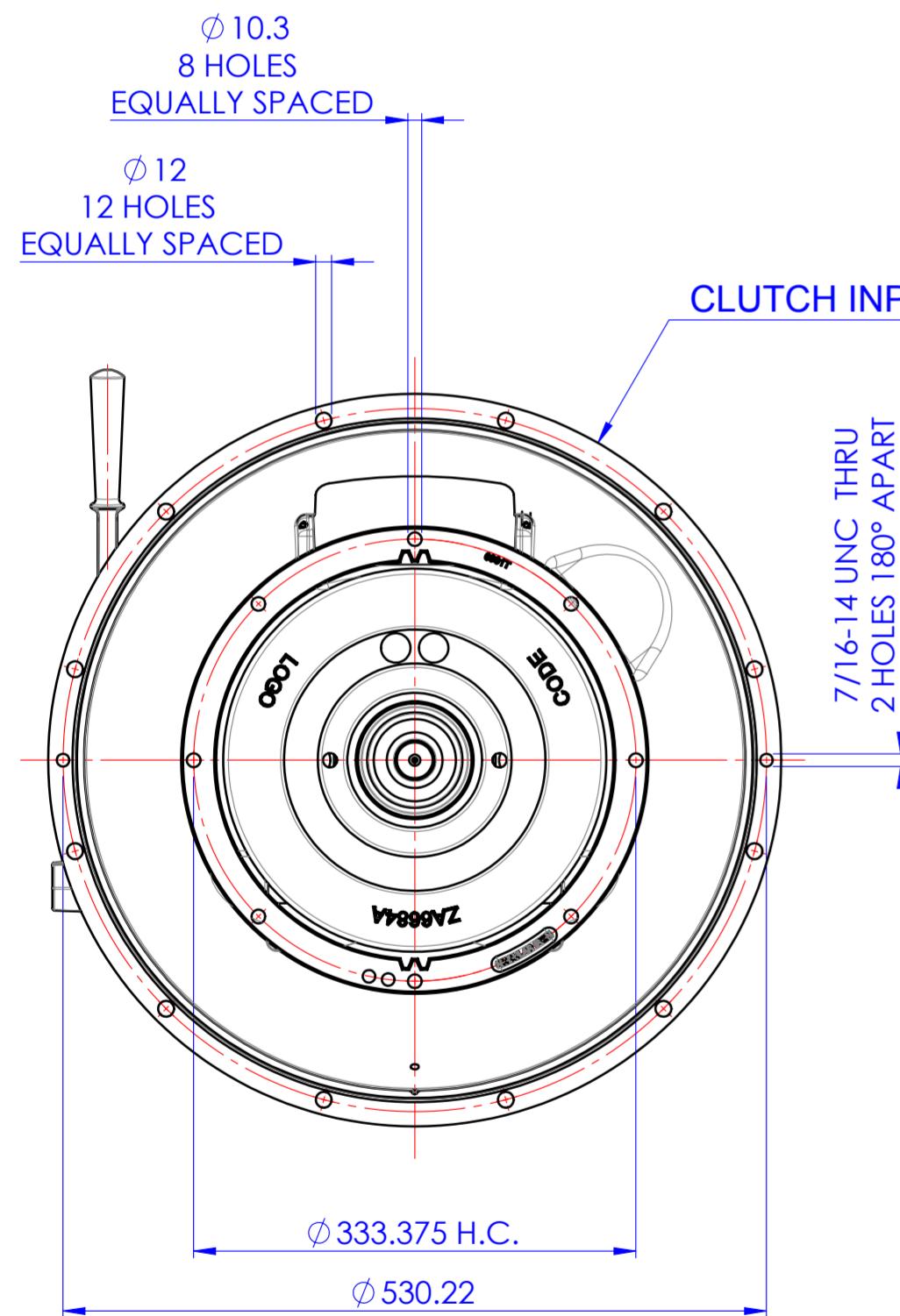
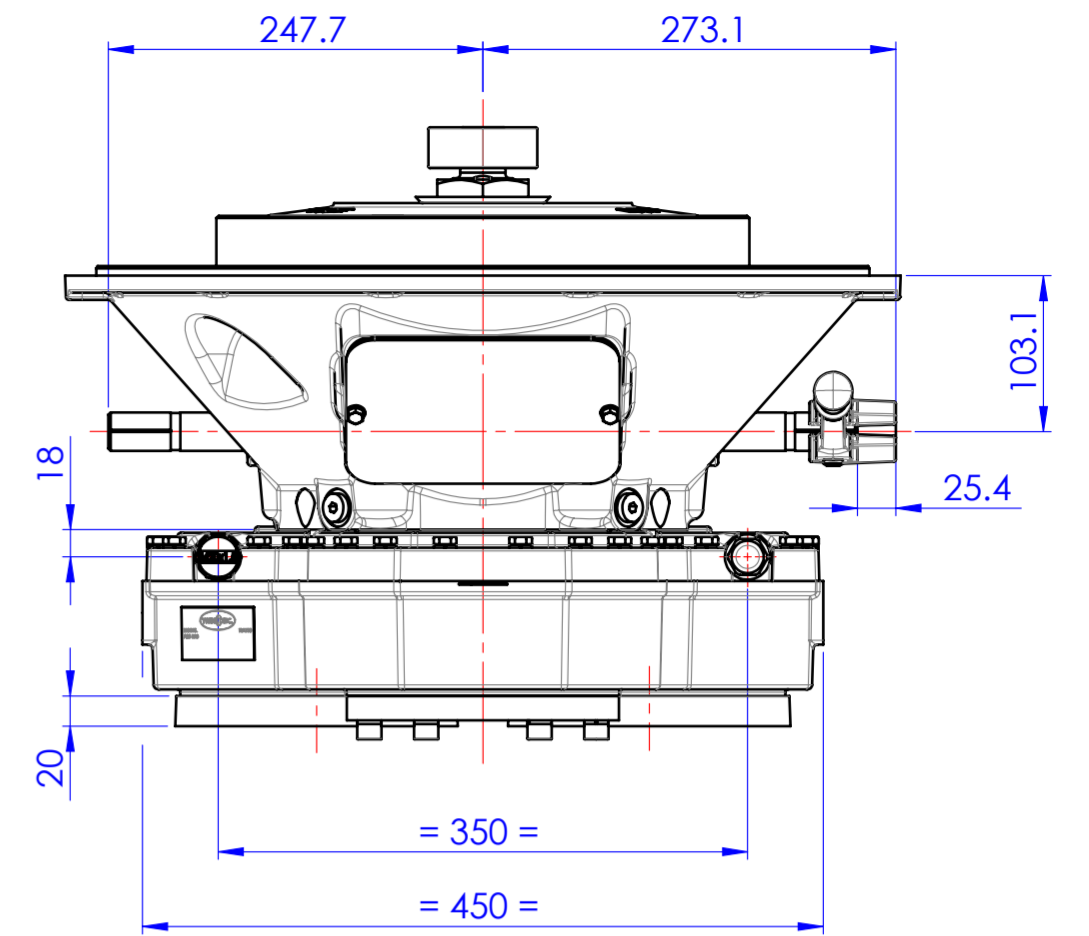
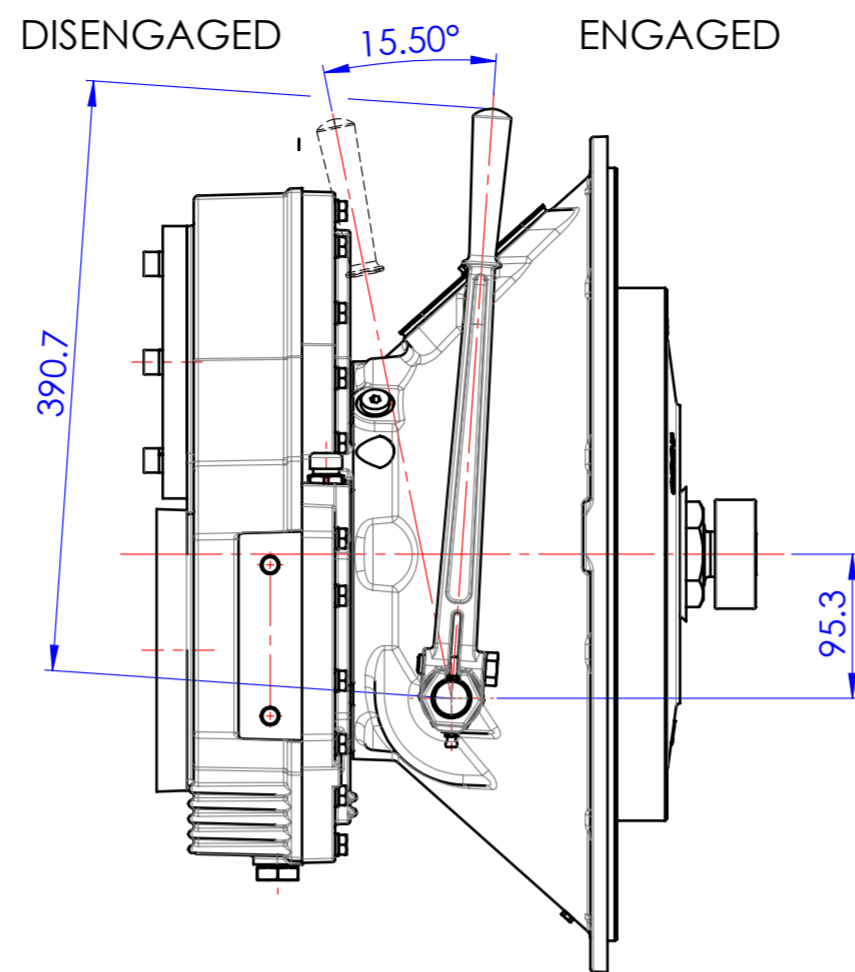
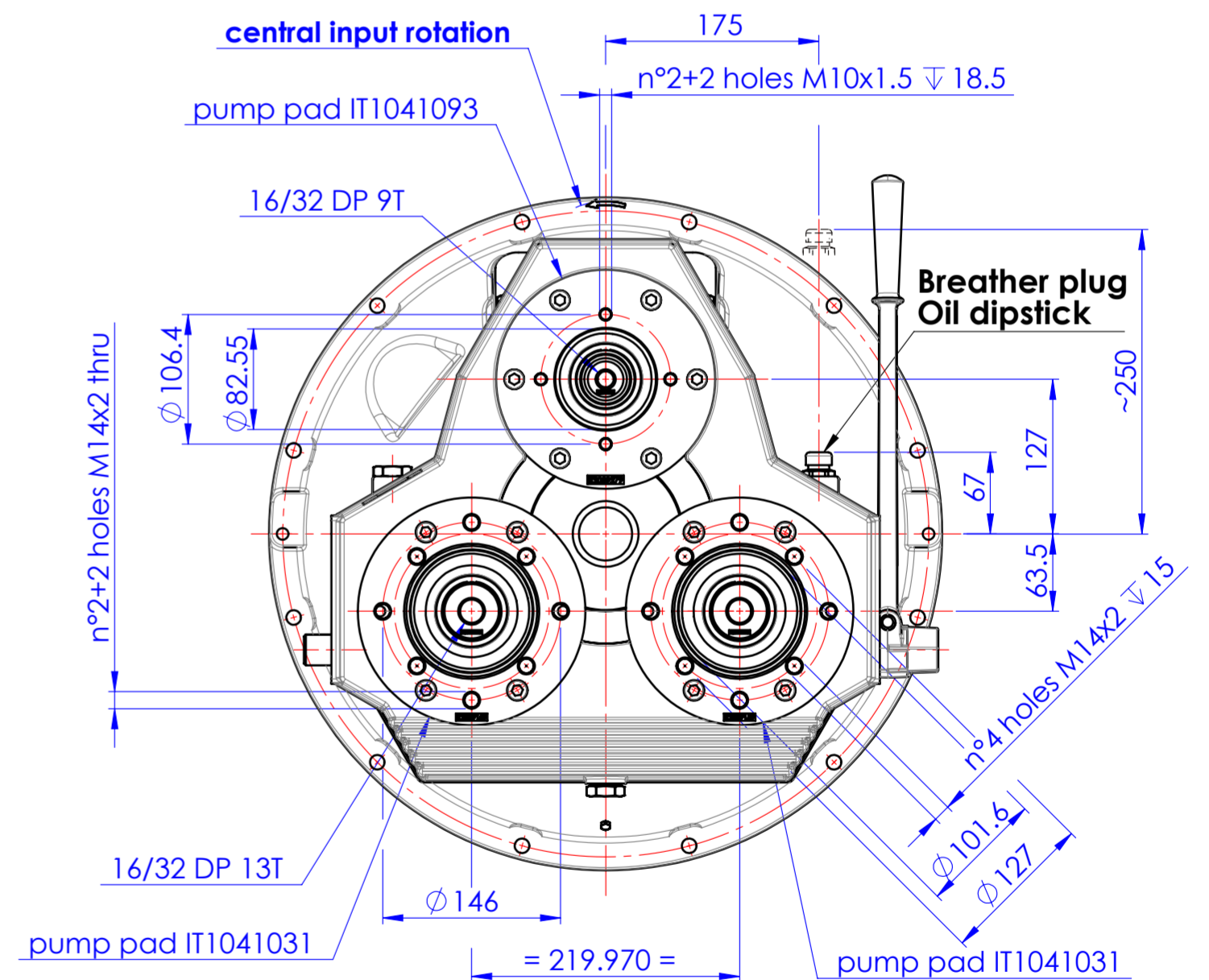
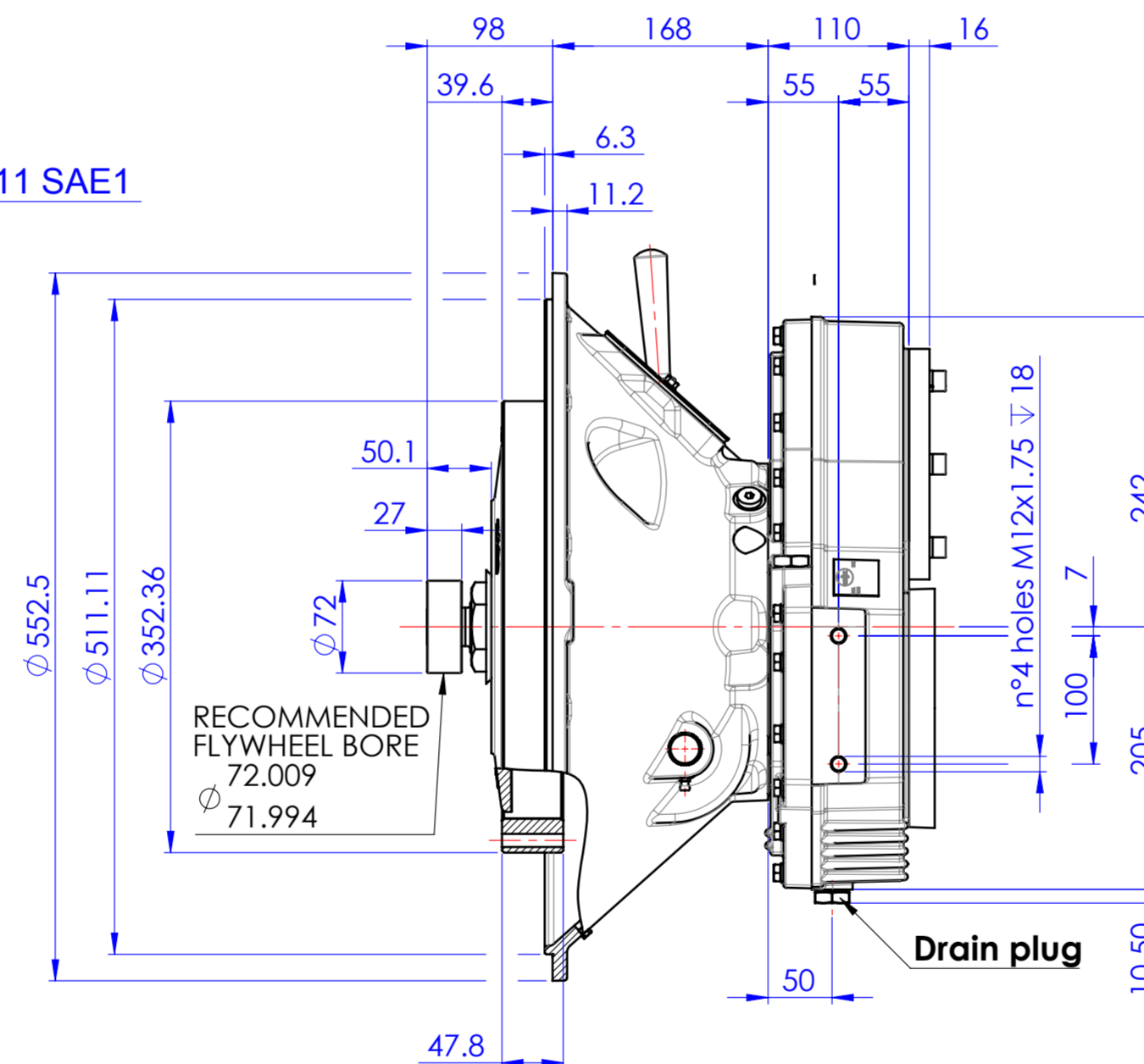


NOTE:  
TO ENSURE NO PRELOAD ON SHIFTING MECHANISM,  
HAND LEVER POSITION IN THE ENGAGED POSITION  
SHOULD BE VERTICAL OR SLIGHTLY OVER CENTER  
OF DISENGAGED POSITION



CLUTCH INPUT SP211 SAE1



GENERAL NOTES:

- a.) REFER TO BILL OF MATERIAL LIST WHEN ORDERING PARTS.
- b.) REFER TO CARE & OPERATION MANUAL FOR ADDITIONAL INFO.

**SPECIAL AM320 FOR RO/SP , BASIC ASSY GROUP RATIO 0.68 : ITB10220005**

**DRAWING AND 3D MODEL ARE VALID FOR ALL RATIOS**

PRIMO UTILIZZO MONTAGGIO/FIRST USE ASSEMBLY: PRIMO IMPIEGO MODELLO/FIRST USE MODEL: SIMILE A/SIMILAR TO:		MODELLO / MADE FROM:		MATERIALE / MATERIAL:		DATA / DATE: 02/16/2018	
<b>METRIC</b>		PESO / WEIGHT: kg		TRATT. TERMICO / HEAT TREAT:		SCALA / SCALE: 1:5	
NOTICE! THIS PRINT CONTAINS PROPRIETARY INFORMATION AND IS NOT TO BE USED IN ANY MANNER DETRIMENTAL TO THE INTEREST OF TWIN DISC, INCORPORATED. THIS NOTICE IS NOT INTENDED TO NULLIFY OR LIMIT RIGHTS GRANTED TO THE U.S. GOVERNMENT OR OTHERS BY CONTRACT.		WR: kg-m <sup>2</sup>		TRATT. SUP. / SURFACE TREATMENT:		DIS / DRAWN: PR	
THIRD ANGLE PROJECTION		DESCRIZIONE: INGOMBRO AM320 BOM 1029020E		DESCRIZIONE: INSTALLATION PUMP DRIVE AM320 BOM 1029020E		VERIF. / CHECK: GG	
TWIN DISC, INCORPORATED		15' fino 200 10' fino 500		APPROVATO/APP: DAJ		FORMATO / SIZE: A2	
						FOGLIO / SHEET: 1 OF 1	
						INDIC MODIF / REV: -	

D

C

B

A