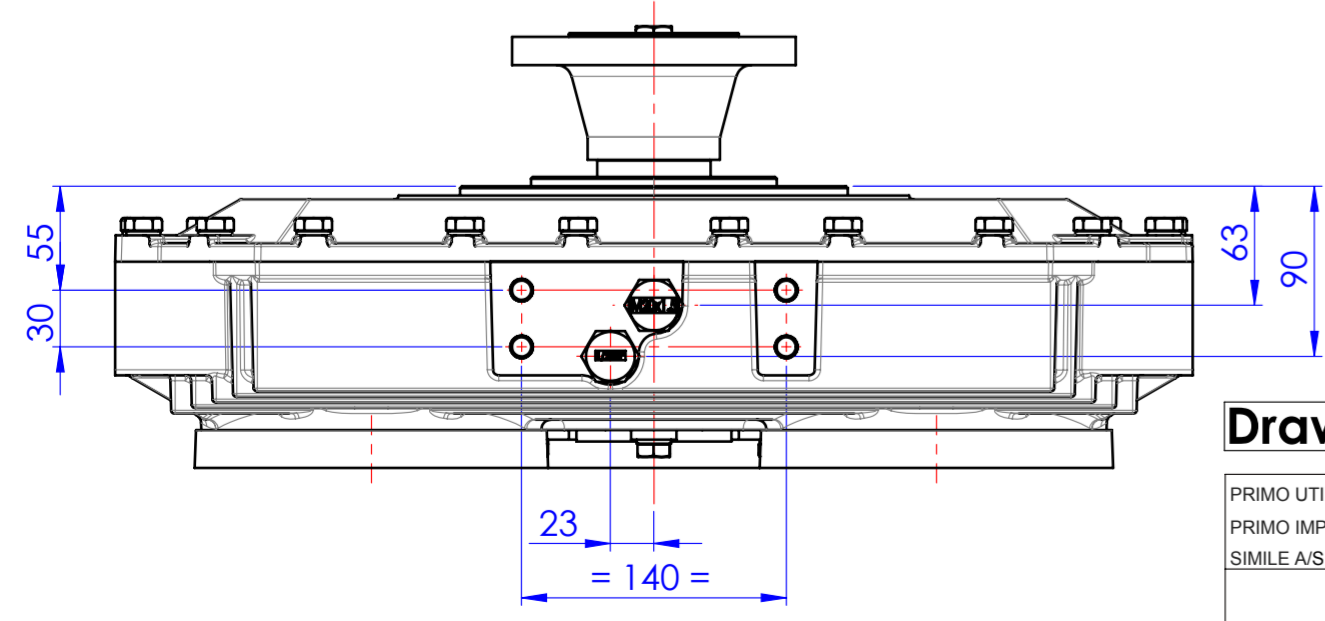
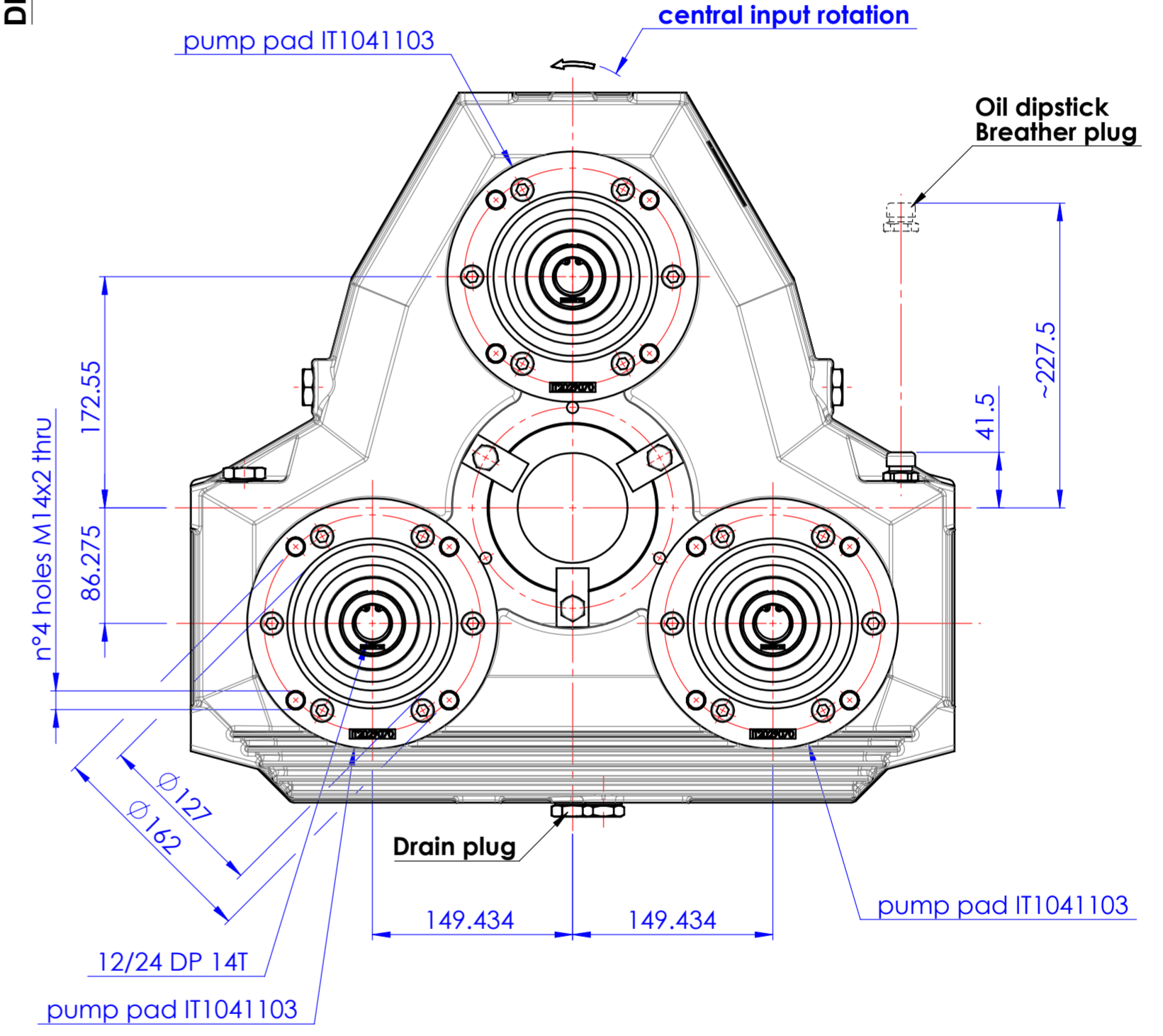
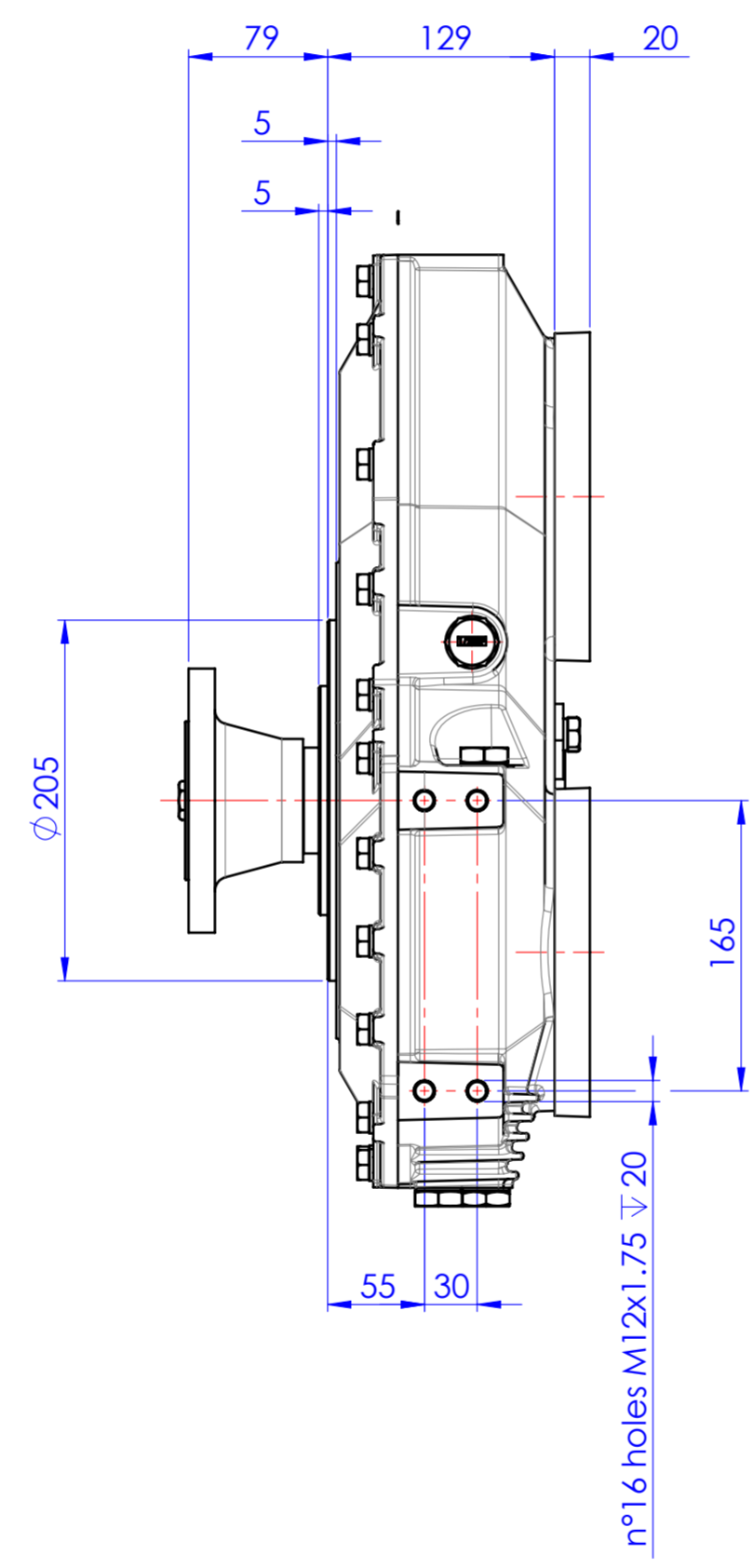
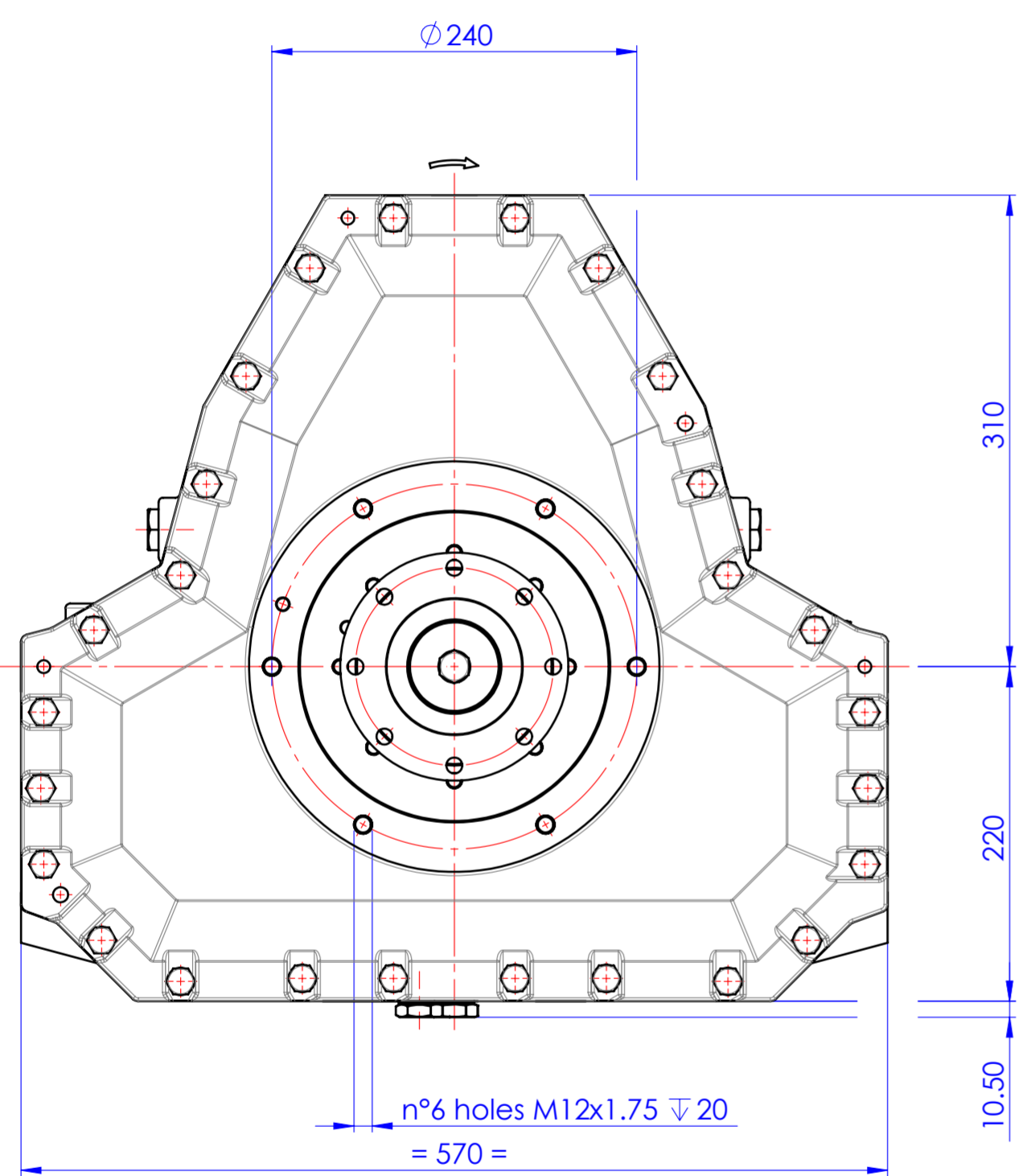
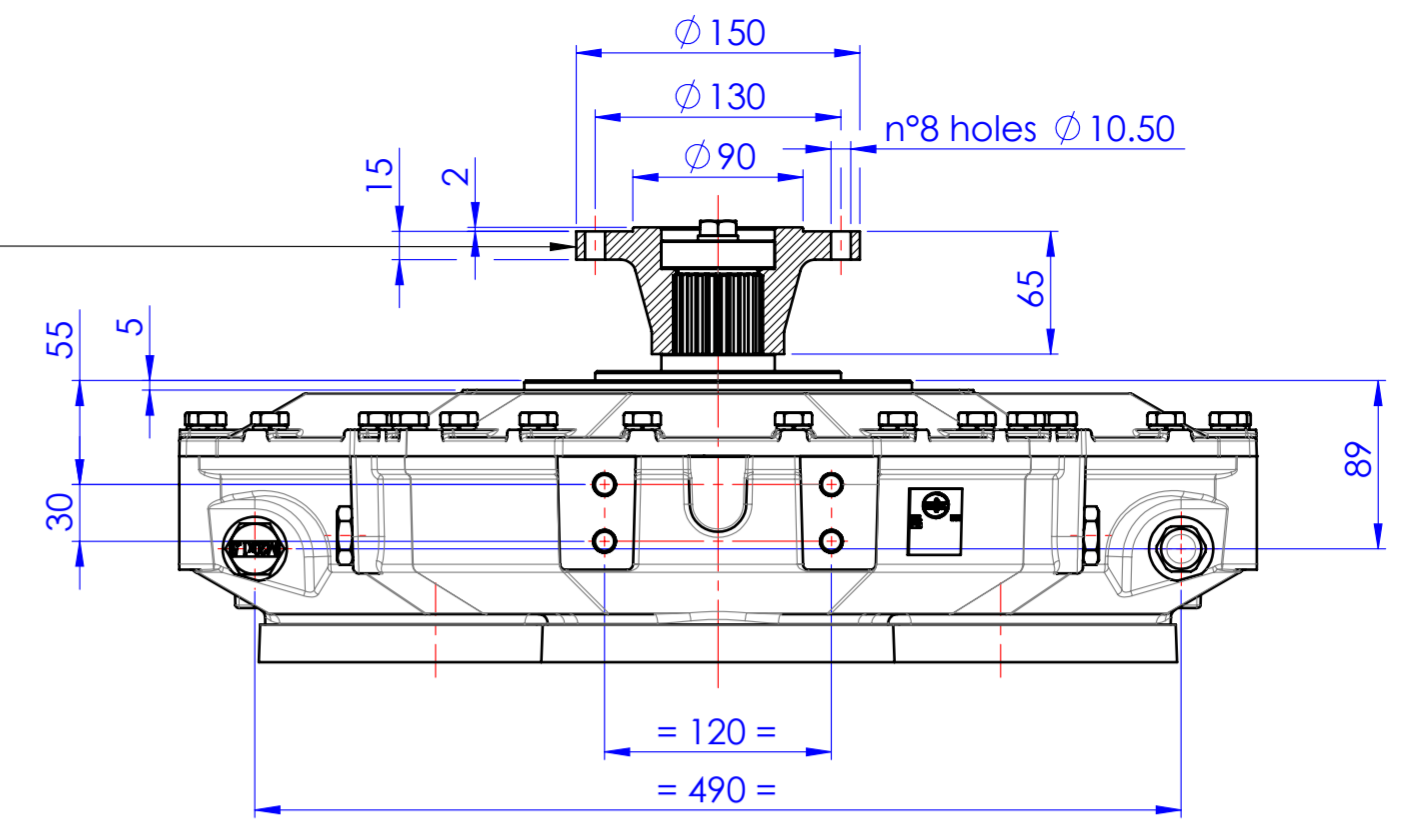


DIN 150 cardan flange IT2062105



Drawing and 3D model are valid for all ratios

PRIMO UTILIZZO MONTAGGIO/FIRST USE ASSEMBLY: PRIMO IMPIEGO MODELLO/FIRST USE MODEL: SIMILE A/SIMILAR TO:		MODELLO / MADE FROM:	MATERIALE / MATERIAL:	DATA / DATE: 12/12/2017	INDIC. MODIF. / REV.:	MODIFICA / CHANGE NO.:	DATA / DATE:
METRIC		PESO / WEIGHT: WR ² : kg WR ³ : kg·m ²	TRATT. TERMICO / HEAT TREAT:	SCALA / SCALE: 1:4	 1029023L		
NOTICE! THIS PRINT CONTAINS PROPRIETARY INFORMATION AND IS NOT TO BE USED IN ANY MANNER DETRIMENTAL TO THE INTEREST OF TWIN DISC, INCORPORATED. THIS NOTICE IS NOT INTENDED TO NULLIFY OR LIMIT RIGHTS GRANTED TO THE U.S. GOVERNMENT OR OTHERS BY CONTRACT.		TOLL. GEN. DILAVORAZIONE H13 FORO - H13 ALBERO 1,14 DIMENSIONI LINEARI +15' fino 200 +10' fino 500	DESCRIZIONE: INGOMBRO AM330 BOM 1029022T	DIS / DRAWN: PR			
THIRD ANGLE PROJECTION		DESCRIZIONE: INGOMBRO AM330 BOM 1029022T	TRATT. SUP. / SURFACE TREATMENT:	DESCRIZIONE: INSTALLATION PUMP DRIVE AM330 BOM 1029022T	FOGLIO / SHEET: 1 OF 1	INDIC. MODIF. / REV.:	

D

C

B

A