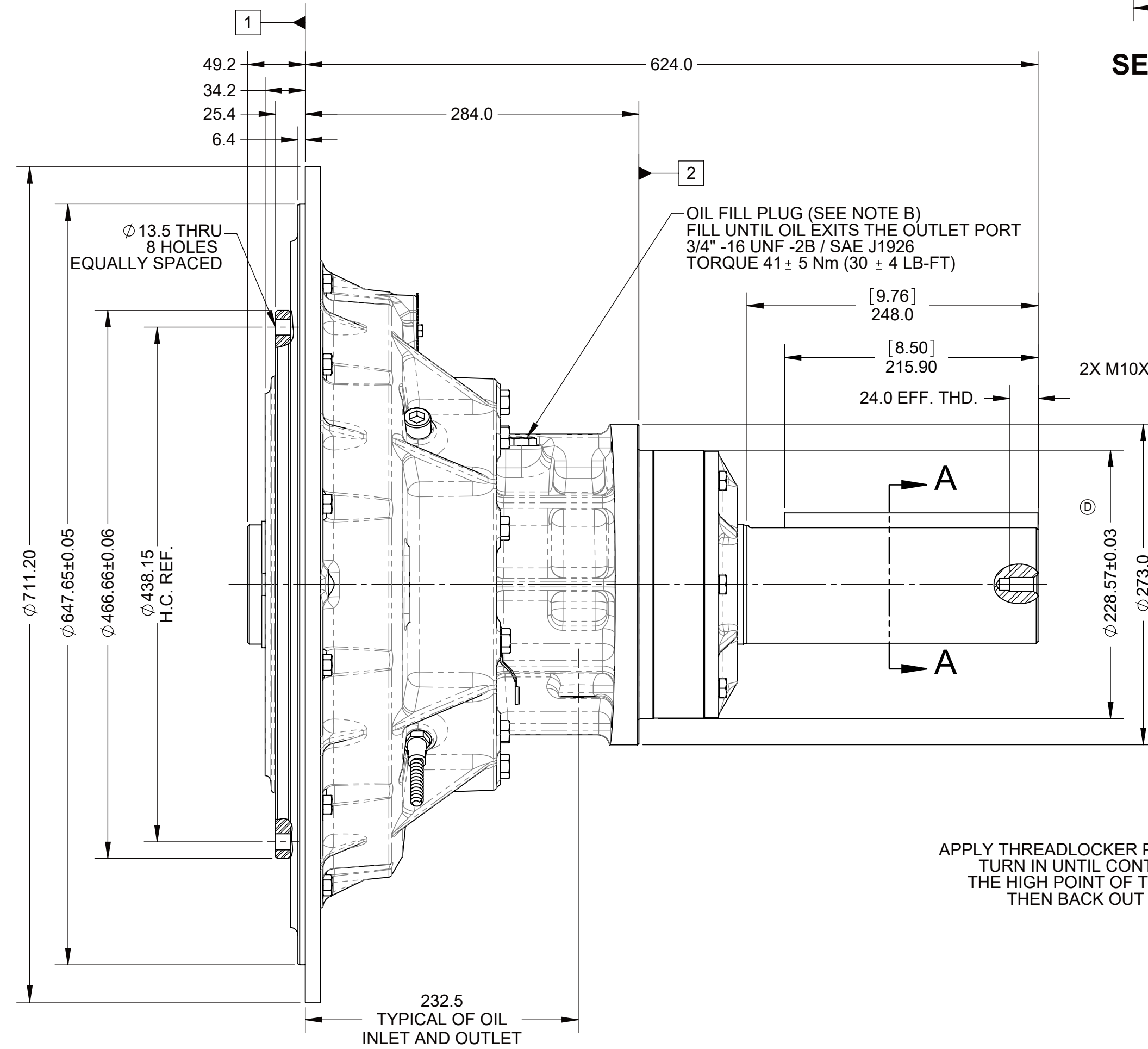
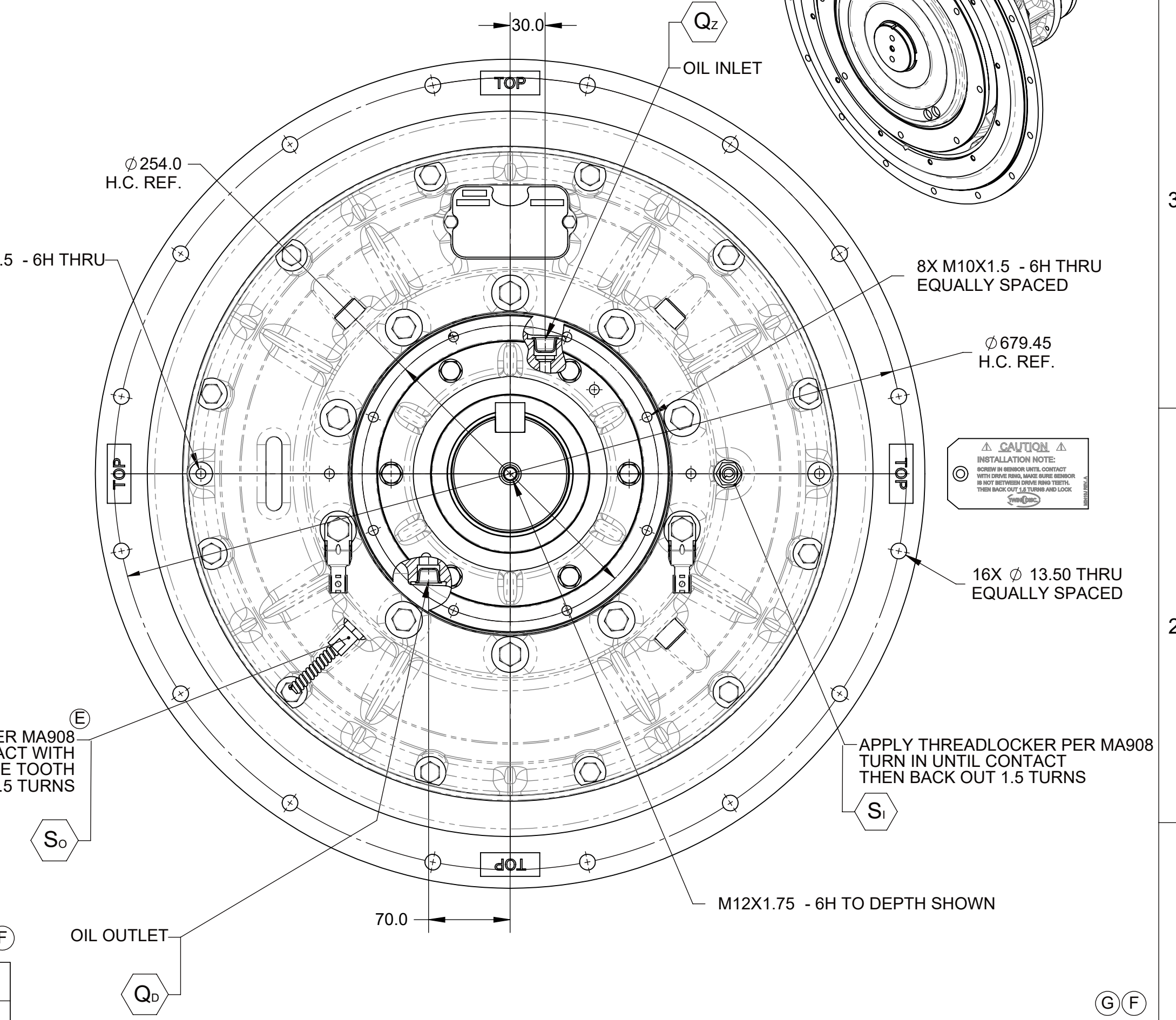
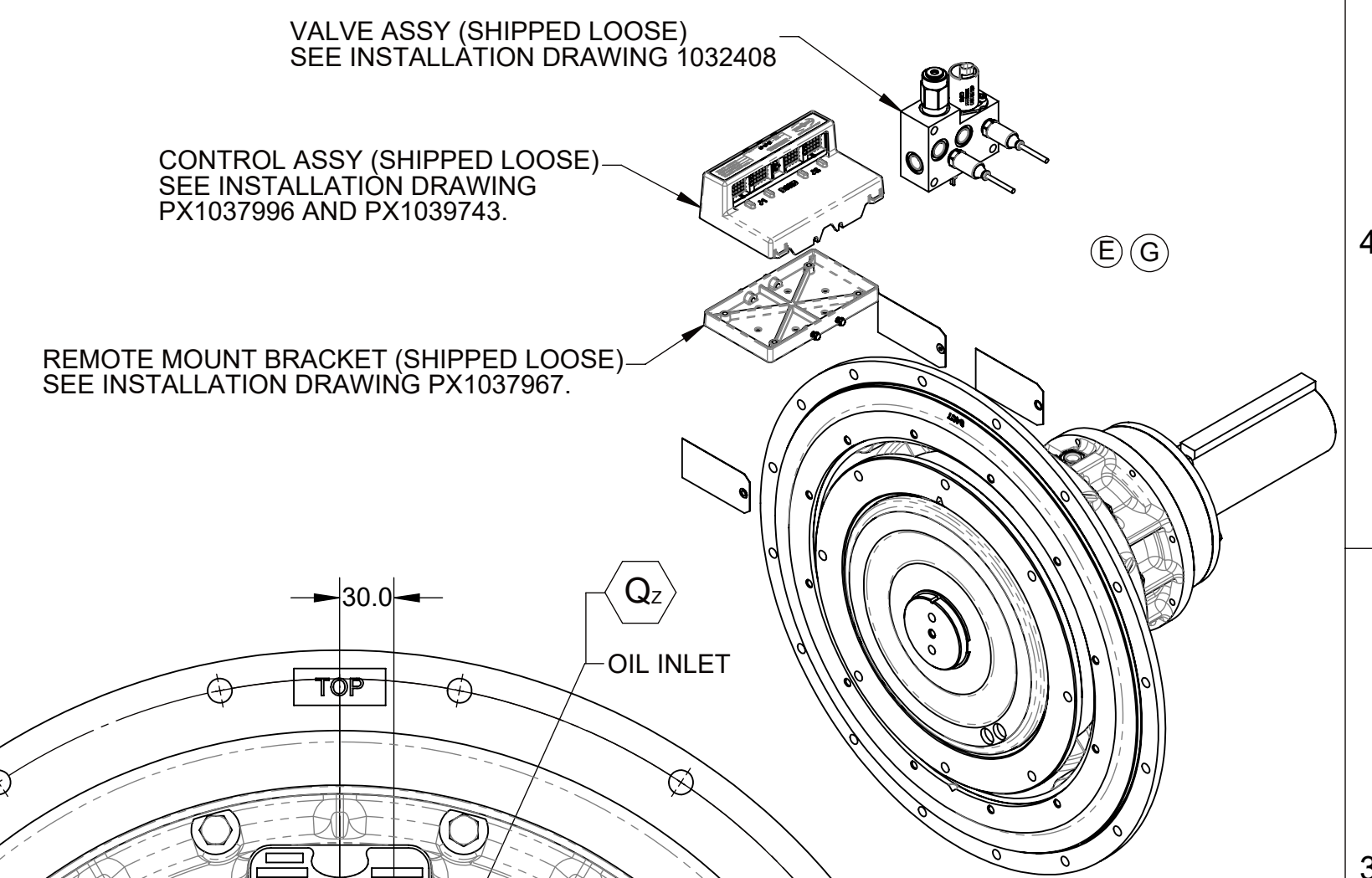
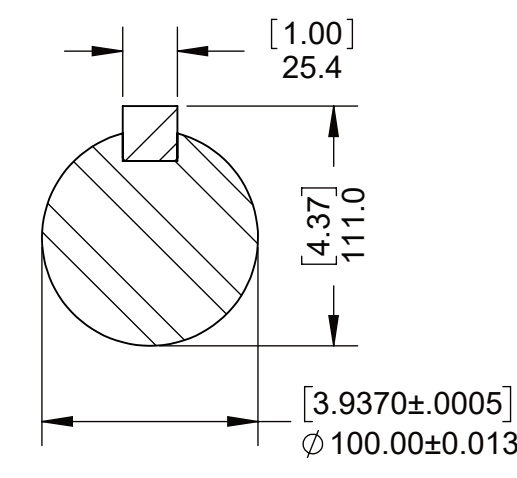


- 1 INPUT MOUNTING FACE AND REFERENCE PLANE
- 2 SUPPORT PLATE MOUNTING FACE

- NOTES:
- A. ALL POINTS AVAILABLE FOR TESTING ARE CODED ○
  - B. REFER TO MANUAL FOR RECOMMENDED OIL, CHECKING, AND MAINTENANCE PROCEDURES
  - C. REPLACE INSTALLATION BOLTS (3) BEFORE OPERATING PTO SEE MANUAL FOR DETAILS



**SECTION A-A**



APPLY THREADLOCKER PER MA908 TURN IN UNTIL CONTACT WITH THE HIGH POINT OF THE TOOTH THEN BACK OUT 1.5 TURNS

APPLY THREADLOCKER PER MA908 TURN IN UNTIL CONTACT THEN BACK OUT 1.5 TURNS

**TEST PORTS**

SYMBOL	DESCRIPTION	PORT/ STANDARD	DESCRIPTION	TORQUE	CLEARANCE FOR REMOVAL (mm)	ELECTRICAL CONNECTION
Q <sub>d</sub>	FLOW TO SUMP	3/4"-16 UNF-2B / SAE J1926	O-RING PORT	41 ± 5 Nm (30 ± 4 LB-FT)	15	-
Q <sub>z</sub>	FLOW TO CLUTCH	3/4"-16 UNF-2B / SAE J1926	O-RING PORT	41 ± 5 Nm (30 ± 4 LB-FT)	15	-
S <sub>i</sub>	INPUT SPEED SENSOR (59 PULSES PER REV.)	5/8"-18 UNF - 2A	-	24.4 ± 2.7 Nm (18 ± 2 LB-FT)	-	DEUTSCH DT04-3P
S <sub>o</sub>	OUTPUT SPEED SENSOR (30 PULSES PER REV.)	5/8"-18 UNF - 2A	-	24.4 ± 2.7 Nm (18 ± 2 LB-FT)	-	DEUTSCH DT04-3P

FIRST USE ASSEMBLY: S1040581 FIRST USE MODEL: RC314P SIMILAR TO:	WEIGHT: 242.4 kg WR: kg-m	THIRD ANGLE PROJECTION	MATERIAL:	DATE: 11/23/2015 SCALE: 1:3.5
<b>METRIC</b>	UNLESS OTHERWISE SPECIFIED MACHINED DIMENSIONS X ±0.75 XX ±0.25 XXX ±0.13	ALL ANGULAR TOLERANCES ±1° GEOMETRIC TOLERANCING PER ASME Y14.5M 1994	HEAT TREAT:	DRAWN BY: ES CHECKED BY: WNK APPROVED BY: DAJ
NOTICE! THIS PRINT CONTAINS PROPRIETARY INFORMATION AND IS NOT TO BE USED IN ANY MANNER DETRIMENTAL TO THE INTEREST OF TWIN DISC, INCORPORATED. THIS NOTICE IS NOT INTENDED TO NULLIFY OR LIMIT RIGHTS GRANTED TO THE U.S. GOVERNMENT OR OTHERS BY CONTRACT.			DESCRIPTION: INSTALLATION RC314P0	DWG SIZE: A2 SHEET: 1 OF 1 REV: G

G	ECNWF-101839	05/25/2021
REV	CHANGE NO.	DATE
<b>TWIN DISC</b>		
RACINE, WI 53403 - USA		
<b>1029135B</b>		

D

C

B

A