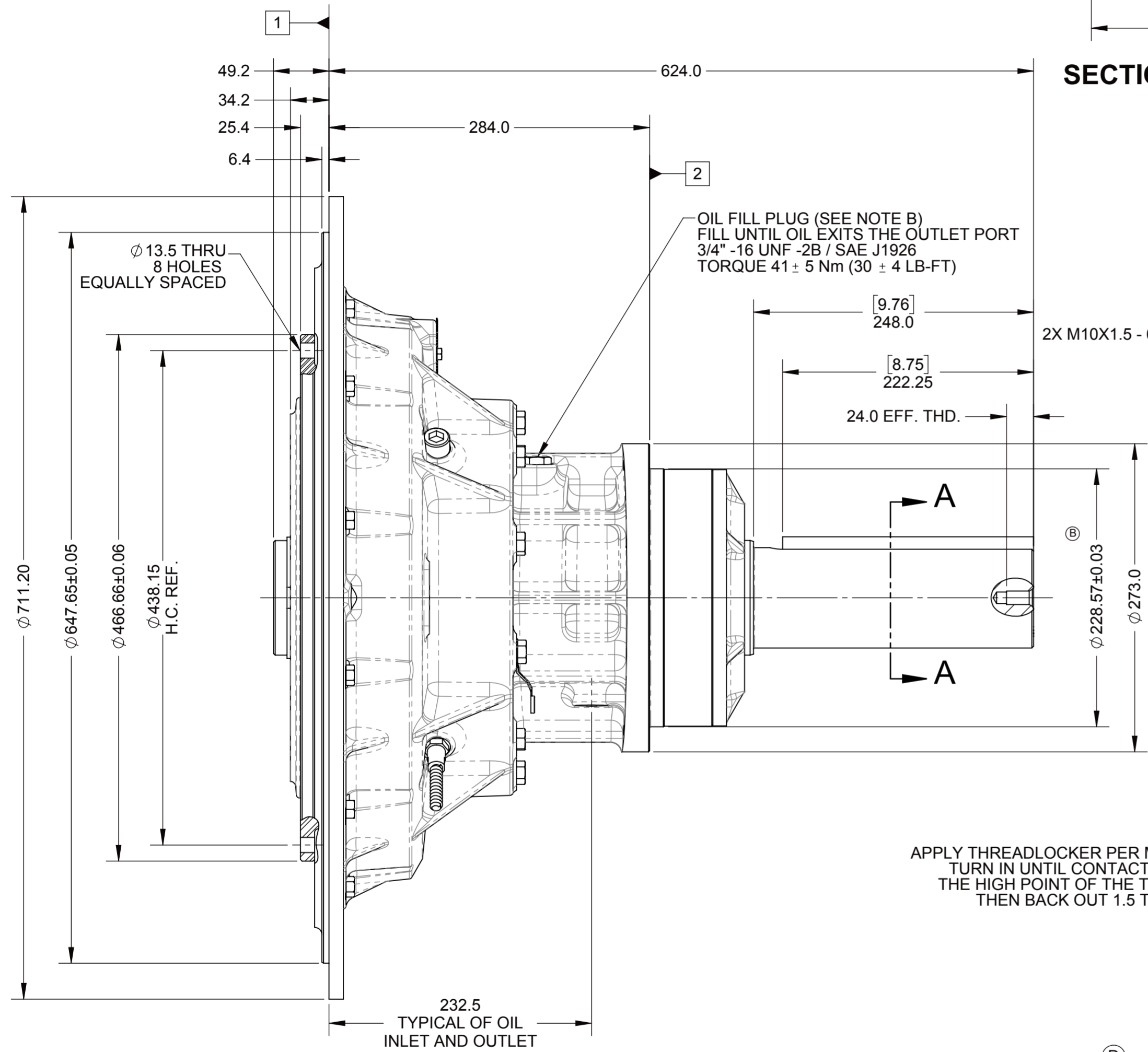
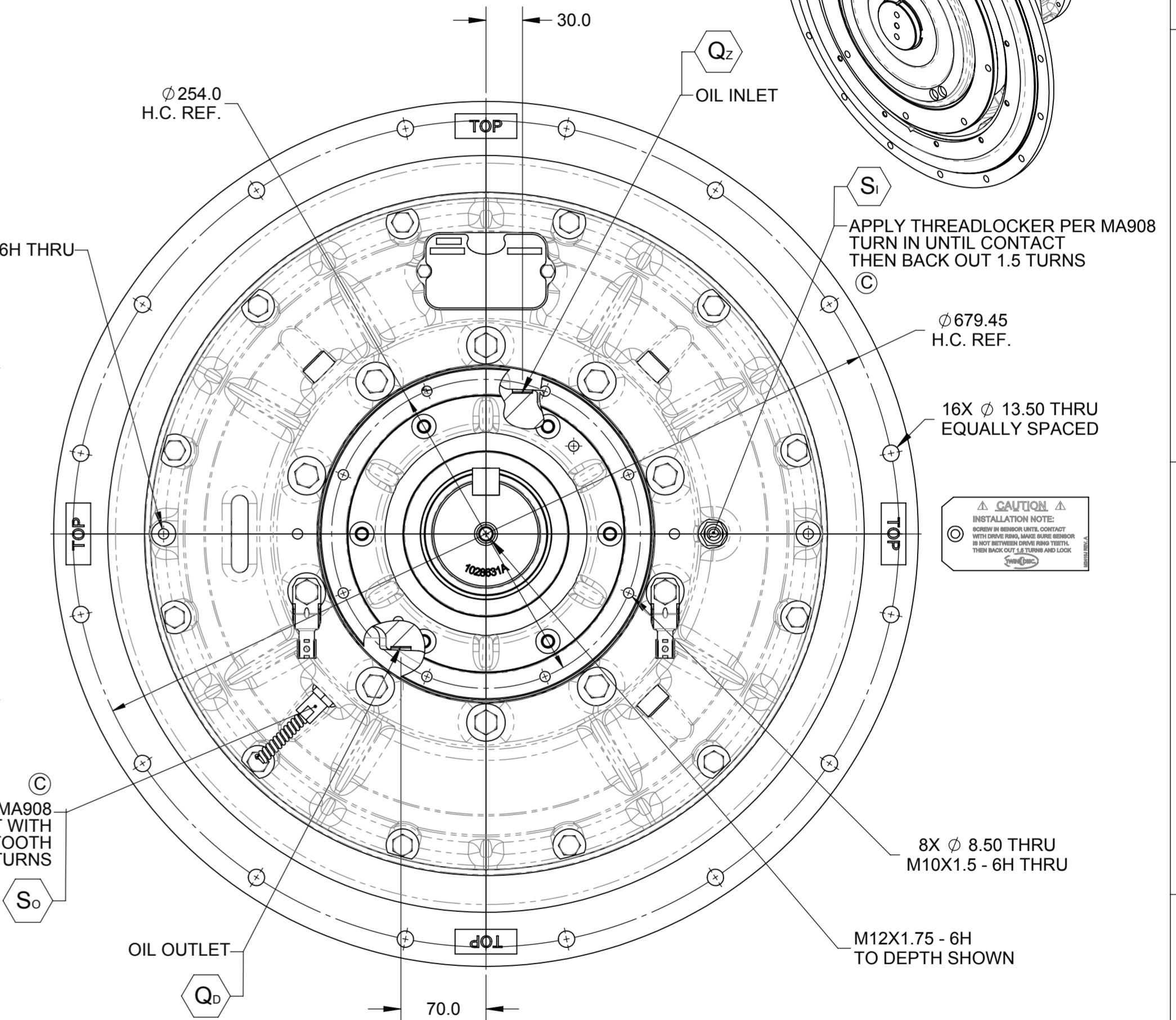
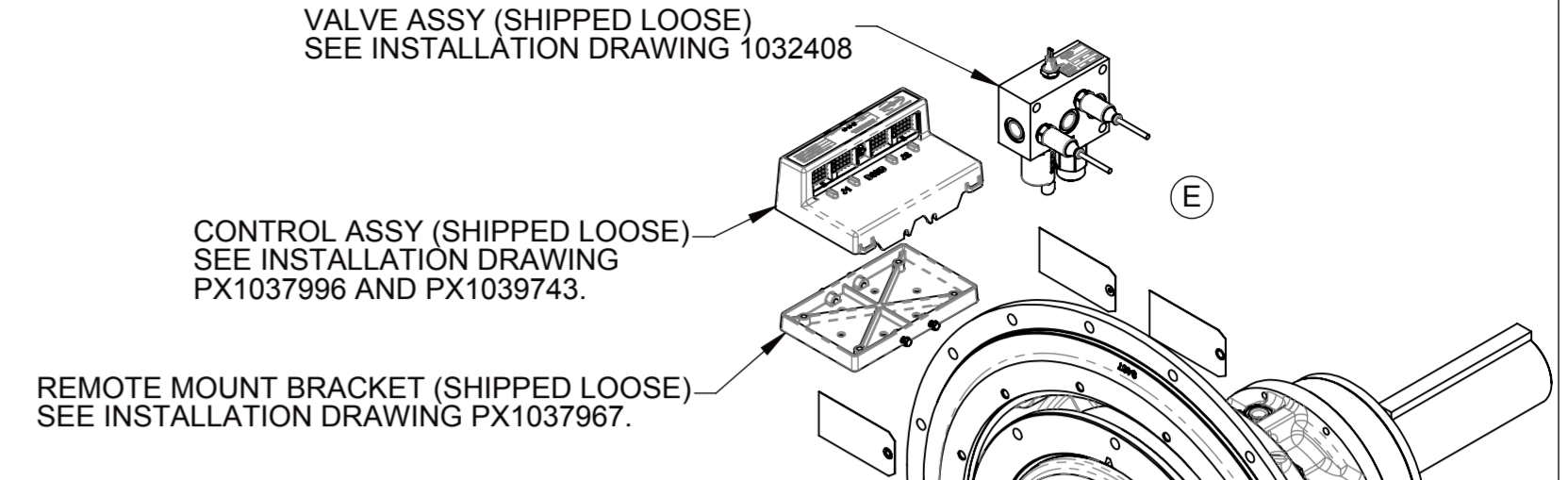
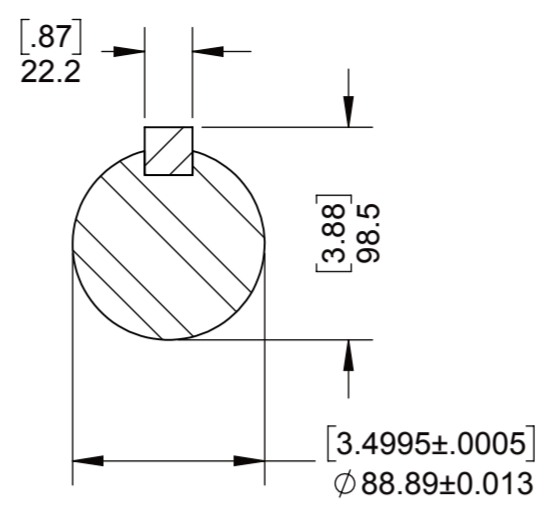


- 1 INPUT MOUNTING FACE AND REFERENCE PLANE
- 2 SUPPORT PLATE MOUNTING FACE

NOTES:
 A. ALL POINTS AVAILABLE FOR TESTING ARE CODED ○.
 B. REFER TO MANUAL FOR RECOMMENDED OIL, CHECKING, AND MAINTENANCE PROCEDURES
 C. REPLACE INSTALLATION BOLTS (3) BEFORE OPERATING PTO SEE MANUAL FOR DETAILS



SECTION A-A



CAUTION
 INSTALLATION NOTE:
 SCREW IN SENSOR UNTIL CONTACT WITH DRIVE SHAFT, MAKE SURE SENSOR IS NOT BETWEEN DRIVE SHAFT TEETH, THEN BACK OUT 1.5 TURNS AND LOCK.

TEST PORTS

SYMBOL	DESCRIPTION	PORT / STANDARD	DESCRIPTION	TORQUE	CLEARANCE FOR REMOVAL (mm)	ELECTRICAL CONNECTION
Q _d	FLOW TO SUMP	3/4" -16 UNF-2B / SAE J1926	O-RING PORT	41 ± 5 Nm (30 ± 4 LB-FT)	15	-
Q _z	FLOW TO CLUTCH	3/4" -16 UNF-2B / SAE J1926	O-RING PORT	41 ± 5 Nm (30 ± 4 LB-FT)	15	-
S _i	INPUT SPEED SENSOR (59 PULSES PER REV.)	5/8" -18 UNF- 2A	-	24.4 ± 2.7 Nm (18 ± 2 LB-FT)	-	DEUTSCH DT04-3P
S _o	OUTPUT SPEED SENSOR (30 PULSES PER REV.)	5/8" -18 UNF- 2A	-	24.4 ± 2.7 Nm (18 ± 2 LB-FT)	-	DEUTSCH DT04-3P

FIRST USE ASSEMBLY: S1040582 FIRST USE MODEL: RC314P0 SIMILAR TO:	WEIGHT: 238.5 kg WR: kg-m	THIRD ANGLE PROJECTION	MATERIAL:	DATE: 4/28/2016 SCALE: 1:3.5
METRIC	UNLESS OTHERWISE SPECIFIED MACHINED DIMENSIONS X ±0.75 XX ±0.25 XXX ±0.13	ALL ANGULAR TOLERANCES ±1° GEOMETRIC TOLERANCING PER ASME Y14.5M 1994	HEAT TREAT:	DRAWN BY: JEL CHECKED BY: JEL APPROVED BY: DAJ
NOTICE! THIS PRINT CONTAINS PROPRIETARY INFORMATION AND IS NOT TO BE USED IN ANY MANNER DETRIMENTAL TO THE INTEREST OF TWIN DISC, INCORPORATED. THIS NOTICE IS NOT INTENDED TO NULLIFY OR LIMIT RIGHTS GRANTED TO THE U.S. GOVERNMENT OR OTHERS BY CONTRACT.			DESCRIPTION: INSTALLATION PTO, RC314P0	DWG SIZE: A2 SHEET: 1 OF 1 REV: E

E	ECNWF-101839	05/25/2021
REV	CHANGE NO.	DATE
TWIN DISC RACINE, WI 53403 - USA		
1029135C		