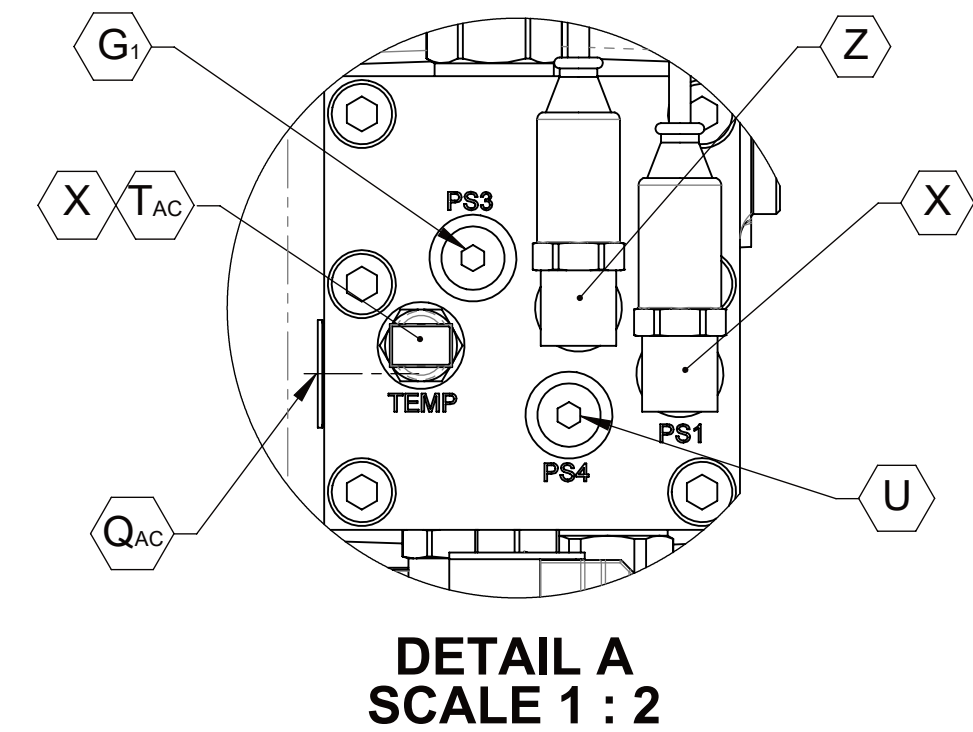
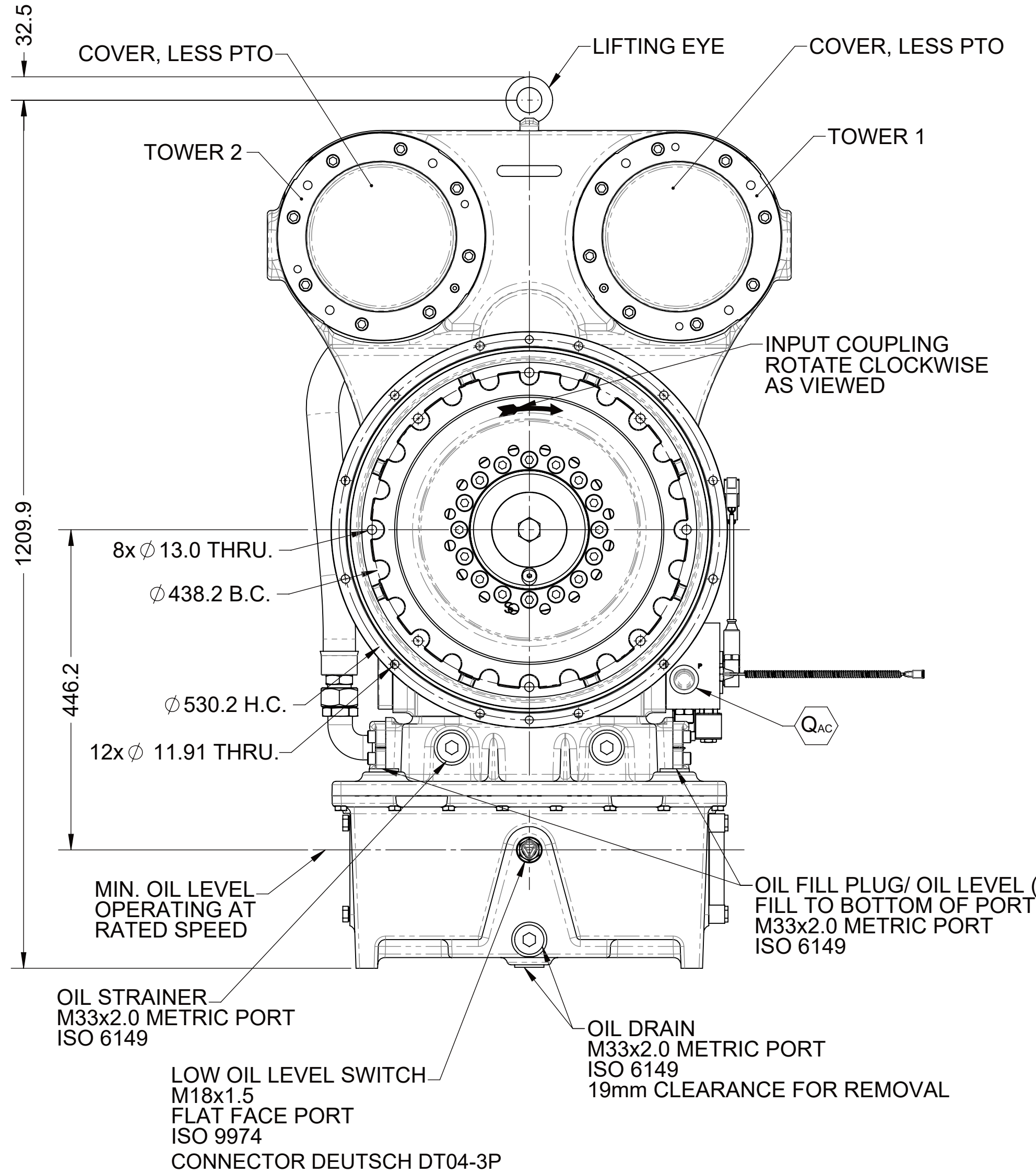


- 1

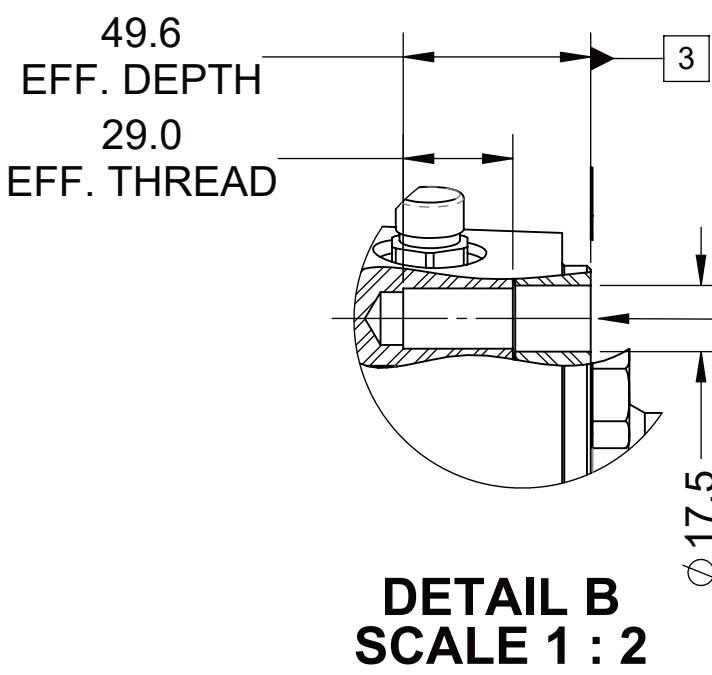
ENGINE FLYWHEEL HOUSING MOUNTING FACE
- 2

OUTPUT SIDE PUMP MOUNTING FACE (BOTH TOWER 1 & 2)
- 3

SUPPORT PLATE MOUNTING FACE

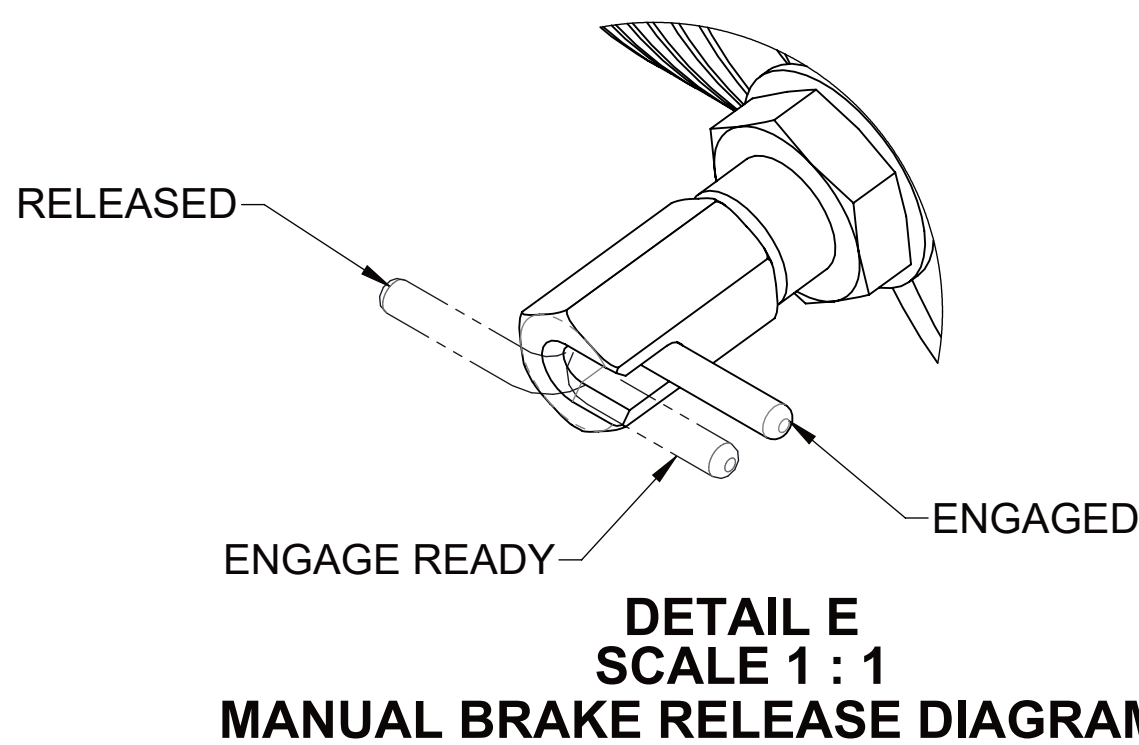
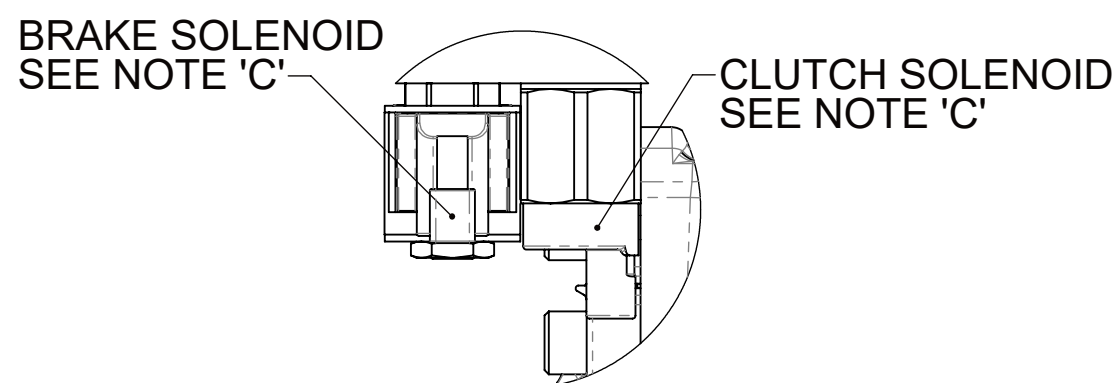
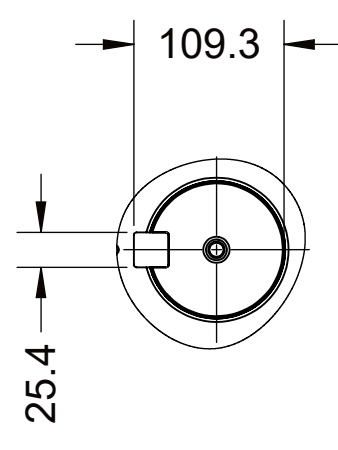
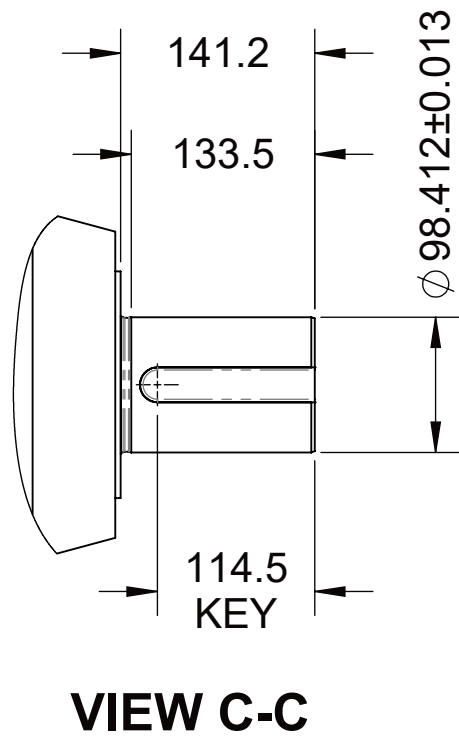
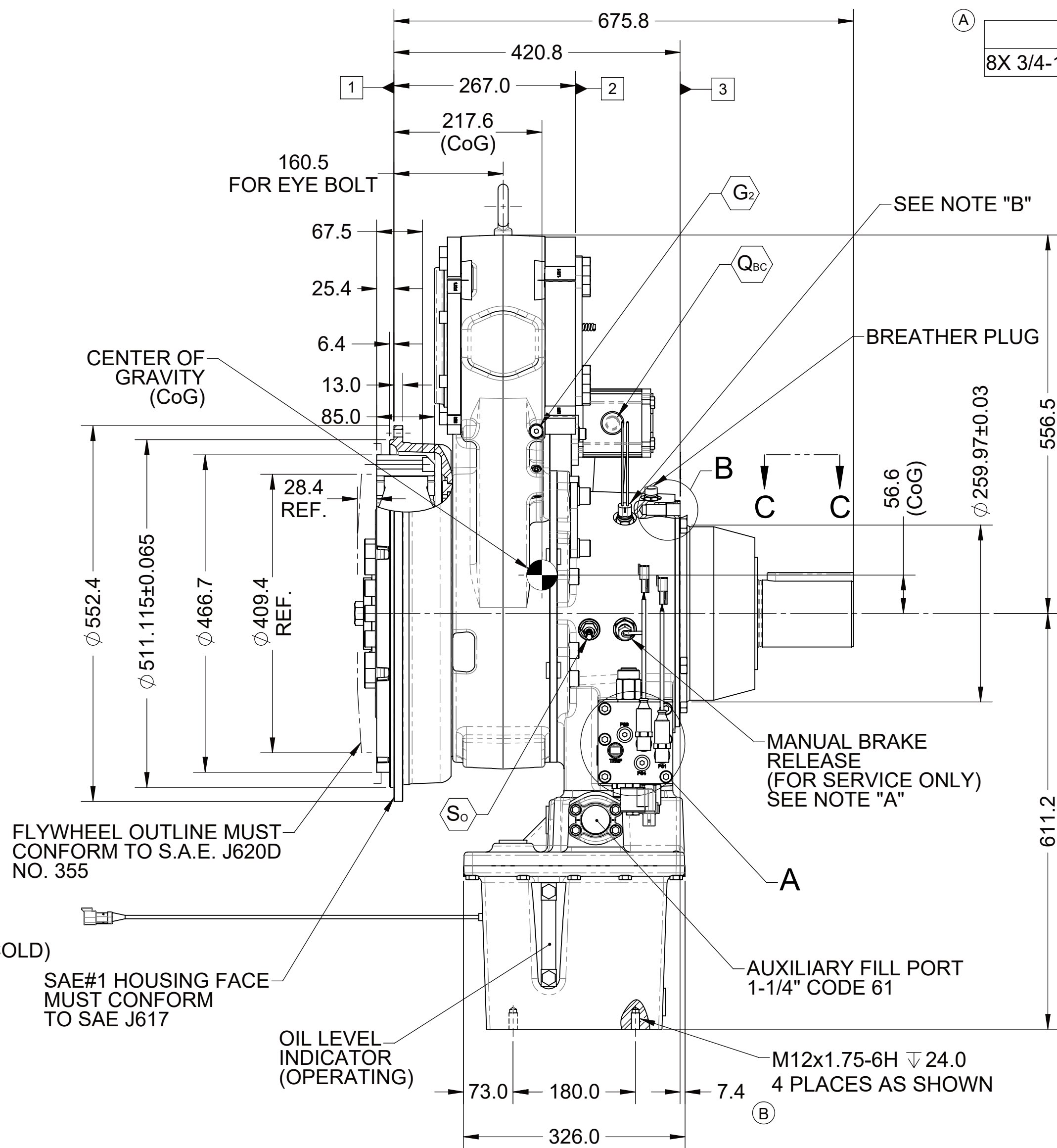


TEST PORTS					
SYMBOL	DESCRIPTION	PORT/ STANDARD	DESCRIPTION	CLEARANCE FOR REMOVAL (mm)	ELECTRICAL CONNECTION
G ₁	LUBE	M12 X 1.5 / ISO 6149	O-RING PORT	11.5	-
G ₂	LUBE	M14 X 1.5 / ISO 9974	FLAT FACE PORT	12	-
Q _{AC}	FLOW AFTER COOLER	M27 X 2.0 / ISO 6149	O-RING PORT	20	-
Q _{BC}	FLOW BEFORE COOLER	7/8" -14 / UNF	O-RING PORT	-	-
S _i	INPUT SPEED SENSOR (53 PULSES PER REV.)	5/8"-18 / UNF	FLAT FACE PORT	-	DEUTCH DT04-3P
S _o	OUTPUT SPEED SENSOR (65 PULSES PER REV.)	5/8"-18 / UNF	FLAT FACE PORT	-	DEUTCH DT04-3P
T _{AC}	TEMPERATURE AFTER COOLER	M12 X 1.5 / ISO 6149	O-RING PORT	27	DEUTCH DT06-2S
U	BRAKE PRESSURE	M12 X 1.5 / ISO 6149	O-RING PORT	11.5	-
X	MAIN PRESSURE	M12 X 1.5 / ISO 6149	O-RING PORT	11.5	-
Z	CLUTCH PRESSURE	M12 X 1.5 / ISO 6149	O-RING PORT	11.5	-



IMPORTANT:
- ALL BOLT HOLES MUST BE USED FOR
MOUNTING SUPPORT PLATE
- USE PROPERTY CLASS 10.9 FASTENERS

- NOTES:
- A. MANUAL BRAKE RELEASE:
SEE DETAIL 'E'.
- B. MANUAL BRAKE RELEASE SWITCH:
SWITCH IS NORMALLY CLOSED
WHEN MANUAL BRAKE RELEASE IS 'ENGAGED'
- C. PROPORTIONAL CONTROL VALVE AND SOLENOID OPERATION:
1. WARNING DO NOT CONNECT VALVE COIL DIRECTLY TO
BATTERY/ POWER SUPPLY VOLTAGE.
2. OPERATION TO BE PERFORMED WITH ONLY TWIN DISC
CONTROL SYSTEMS OR MODULES
- D. ALL POINTS AVAILABLE FOR TESTING ARE CODED
- E. ALL PLUGS AND TEST PORTS TO BE
TORQUED PER S574 O-RING PORT SPECIFICATIONS
(SEE OWNER'S MANUAL)
- F. REFER TO MANUAL FOR RECOMMENDED OIL, CHECKING, AND
MAINTENANCE PROCEDURES



FIRST USE ASSEMBLY: S1035020
FIRST USE MODEL: HP800
SIMILAR TO: 1029600D

WEIGHT: 678_g
WR: _{kg-m}

THIRD ANGLE
PROJECTION

UNLESS OTHERWISE SPECIFIED
MACHINED DIMENSIONS
X \pm 0.25
XX \pm 0.13
XXX \pm 0.075
ALL ANGULAR TOLERANCES \pm 1°
GEOMETRIC TOLERANCING
PER ASME Y14.5M 1994

NOTES: THIS PRINT CONTAINS PROPRIETARY INFORMATION AND IS
NOT TO BE USED IN ANY MANNER DETRIMENTAL TO THE INTEREST OF
TWIN DISC, INCORPORATED
THIS NOTICE IS NOT INTENDED TO NULLIFY OR LIMIT RIGHTS
GRANTED TO THE U.S. GOVERNMENT OR OTHERS BY CONTRACT.

METRIC

DESCRIPTION: INSTALLATION
HPTO, HP800

DATE: 3/8/2018
SCALE: 1:5.5
DRAWN BY: LT
CHECKED BY: YU
APPROVED BY: DAJ

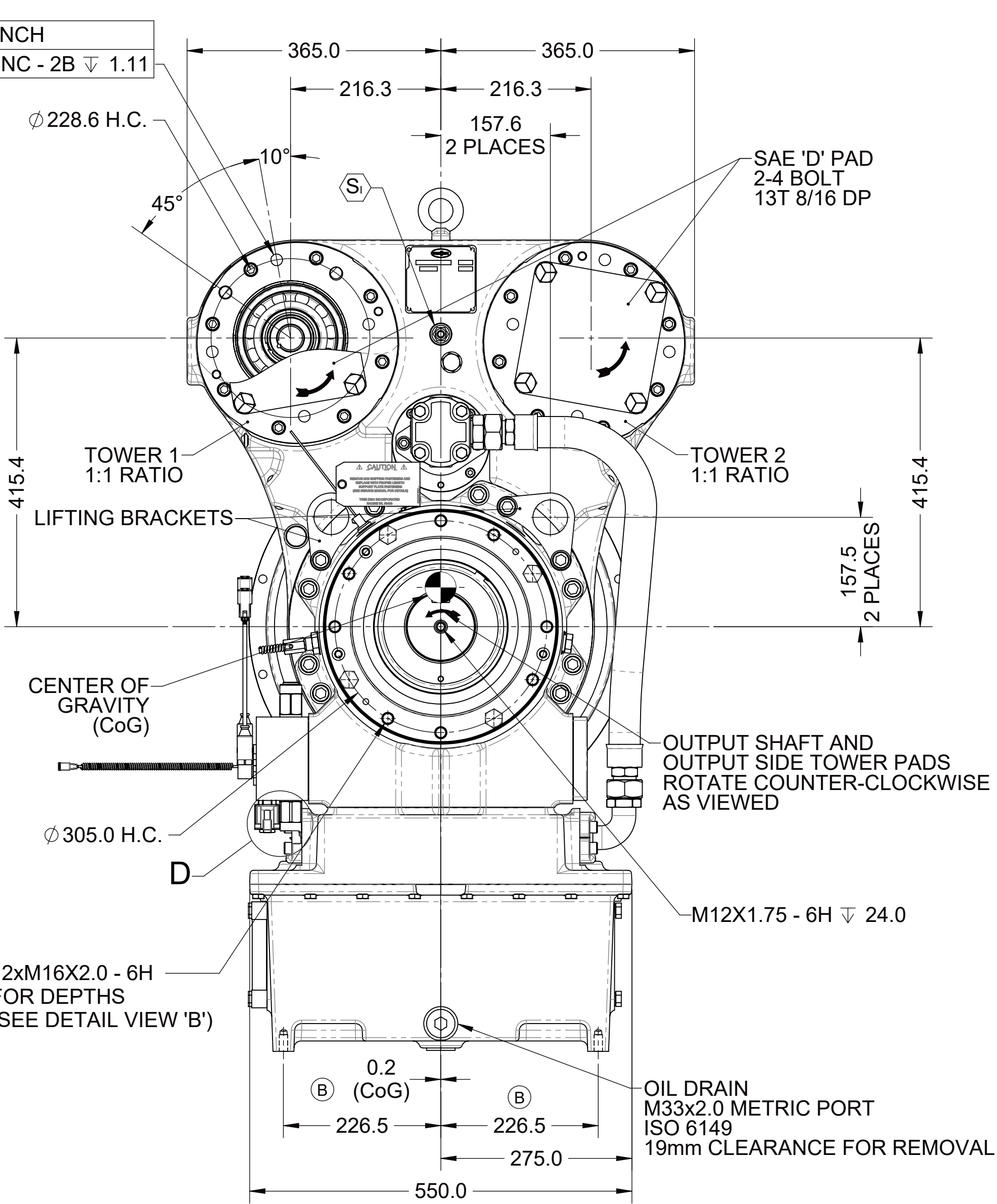
MATERIAL: HEAT TREAT: DESCRIPTION: INSTALLATION
HPTO, HP800

ECNWF-100635 03/19/2021
CHANGE NO. DATE

RACINE, WI 53403 - USA

1029600E

DWG SIZE: A1 SHEET: 1 OF 1 REV: B



REMOTE MOUNTED
ELECTRONIC CONTROLLER & BRACKET
(SHIPPED LOOSE)
SEE INSTALLATION DRAWINGS:
CONTROLLER : PX1040894
BRACKET : PX1037967

