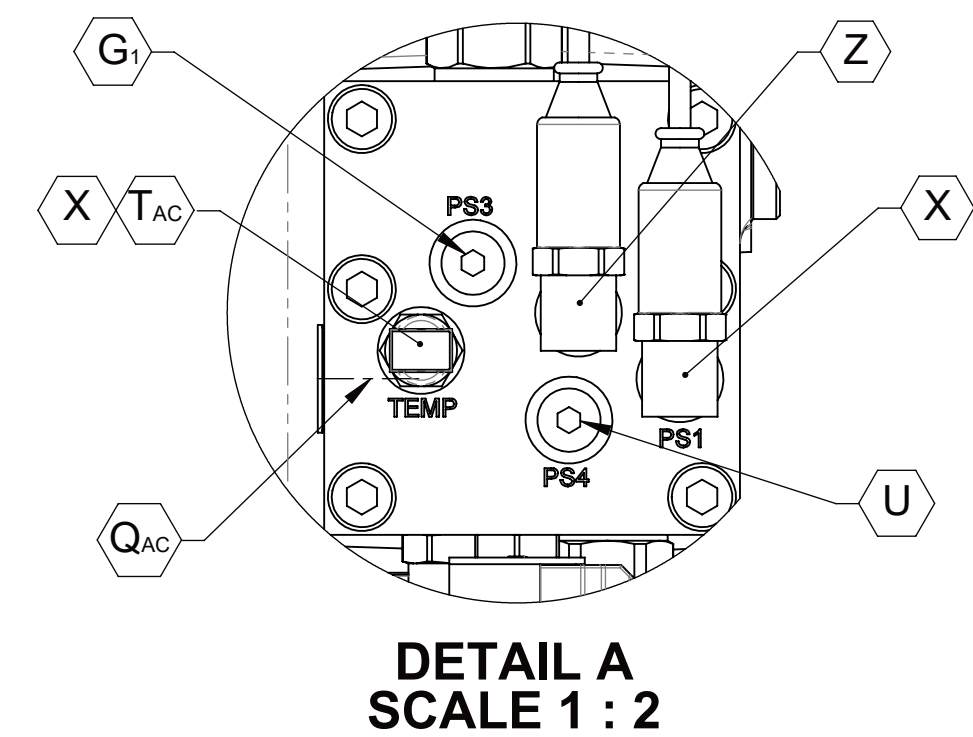
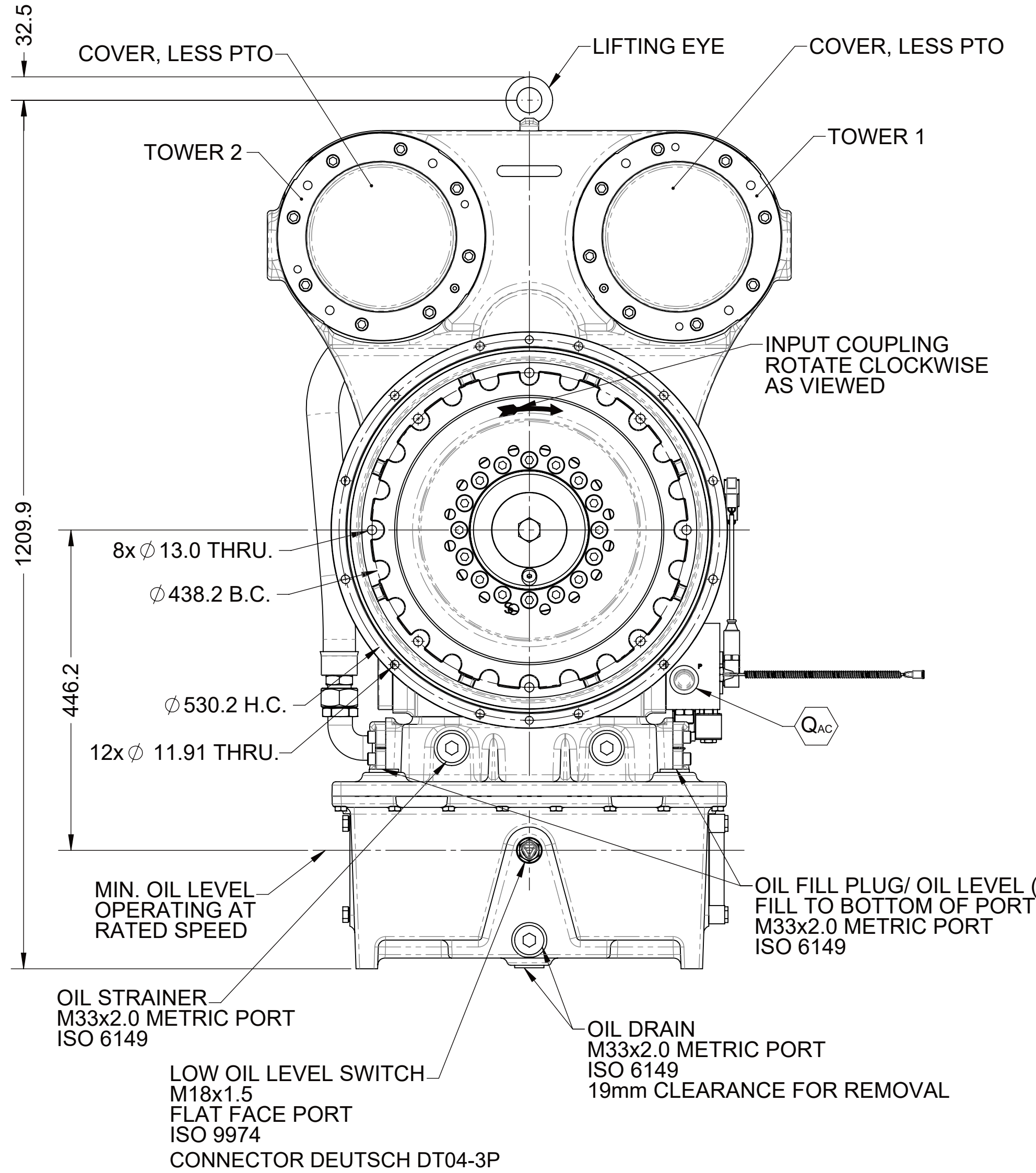


- 1

ENGINE FLYWHEEL HOUSING MOUNTING FACE
- 2

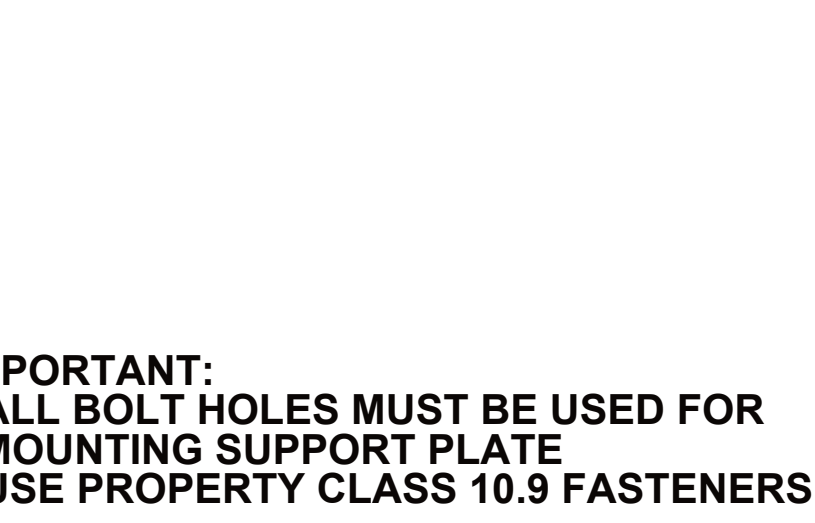
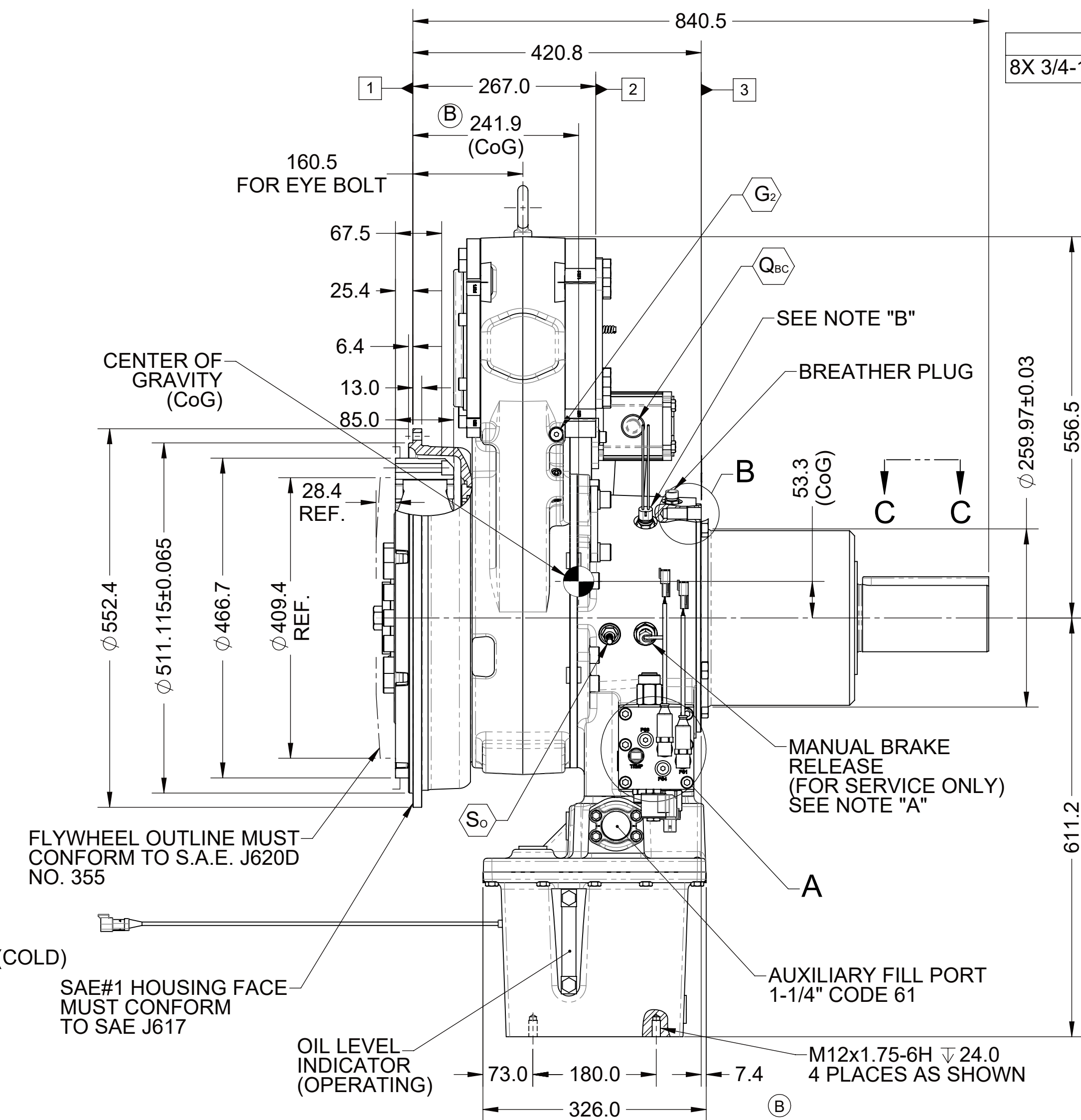
OUTPUT SIDE PUMP MOUNTING FACE (BOTH TOWER 1 & 2)
- 3

SUPPORT PLATE MOUNTING FACE



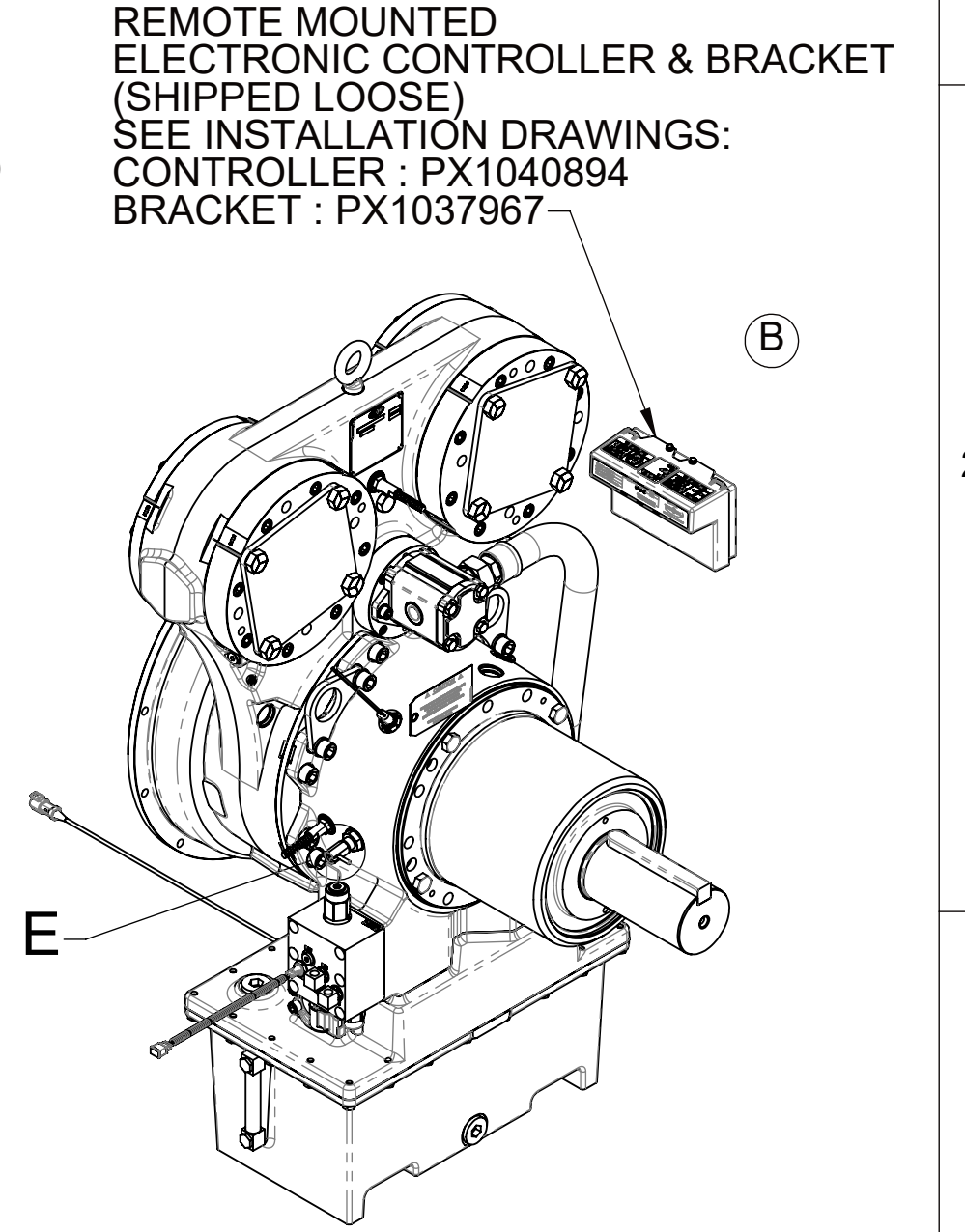
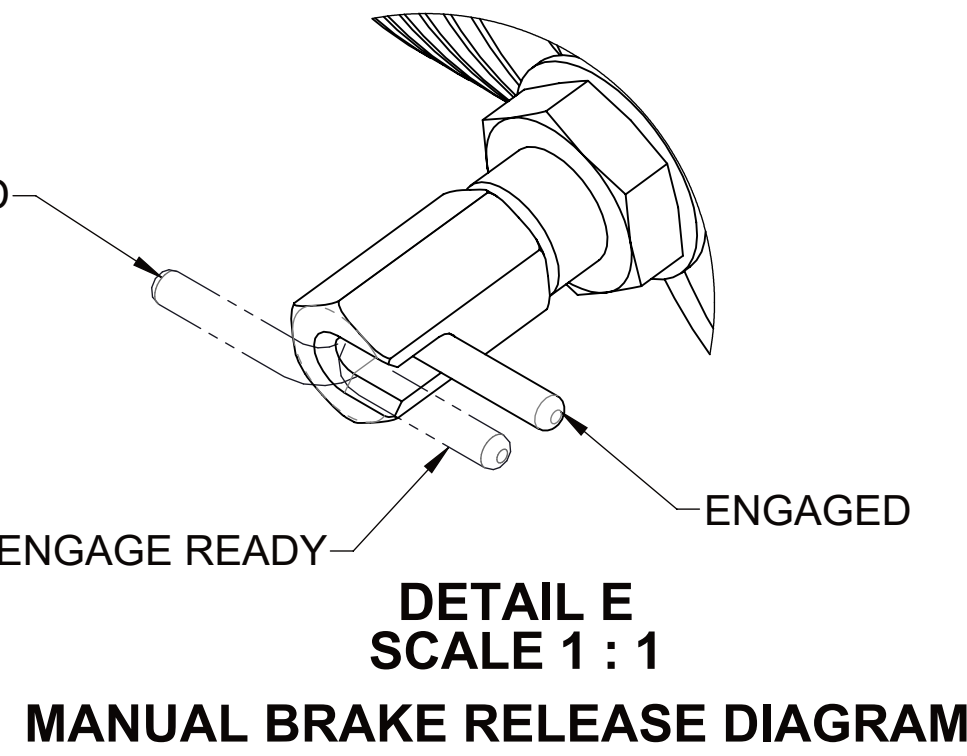
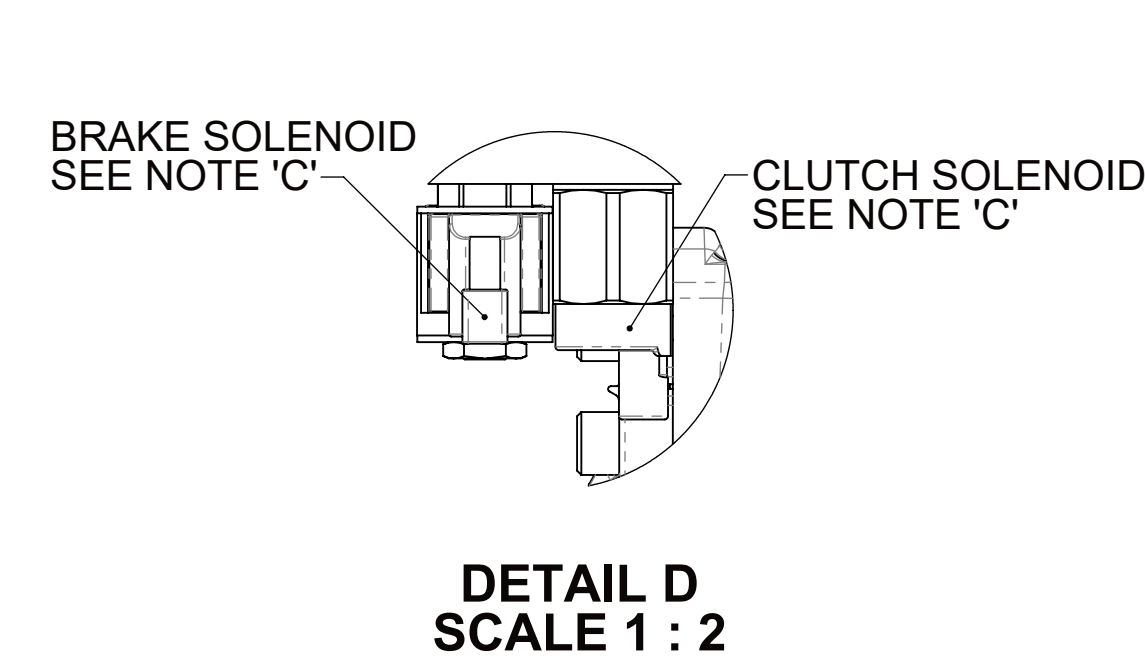
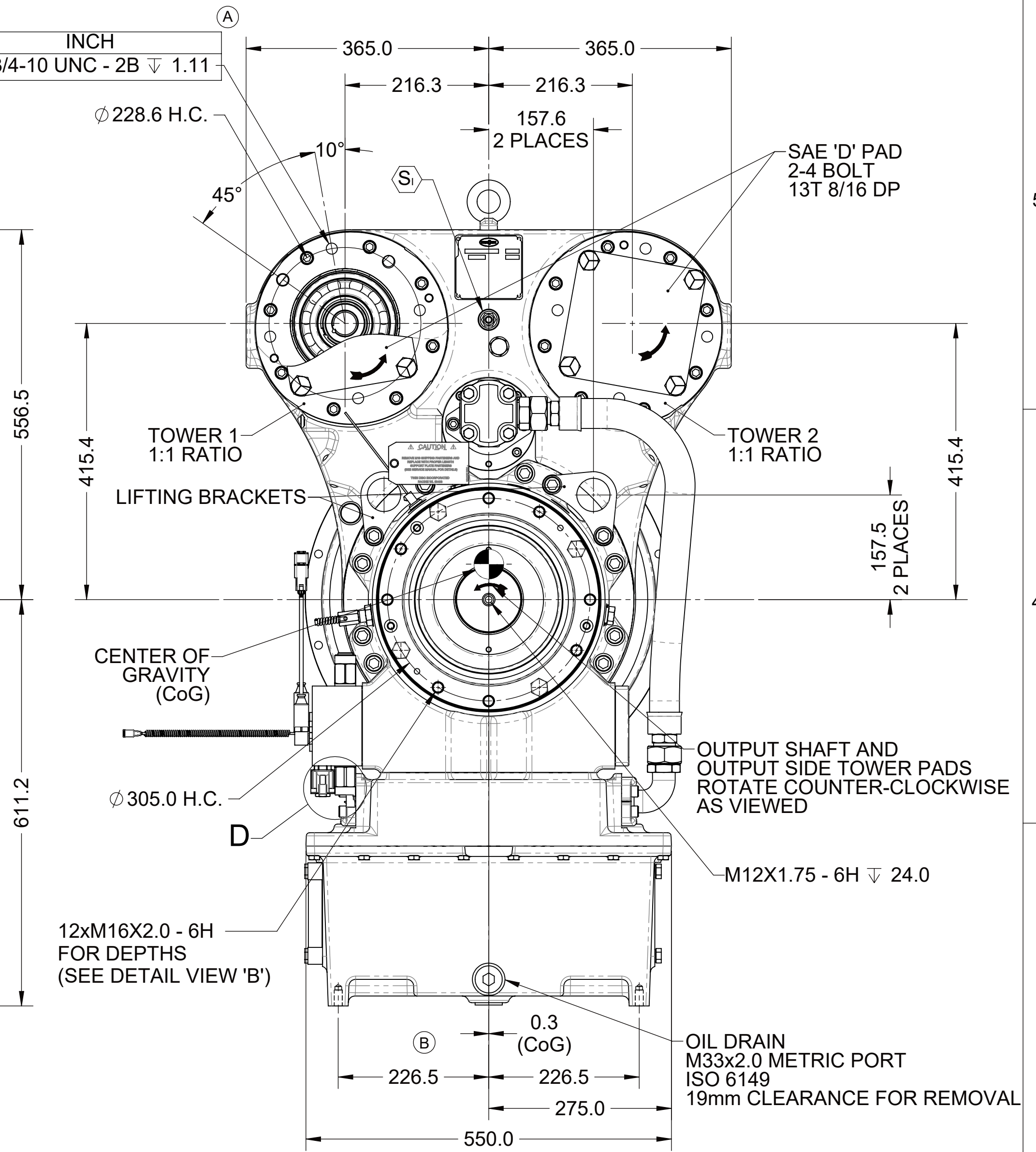
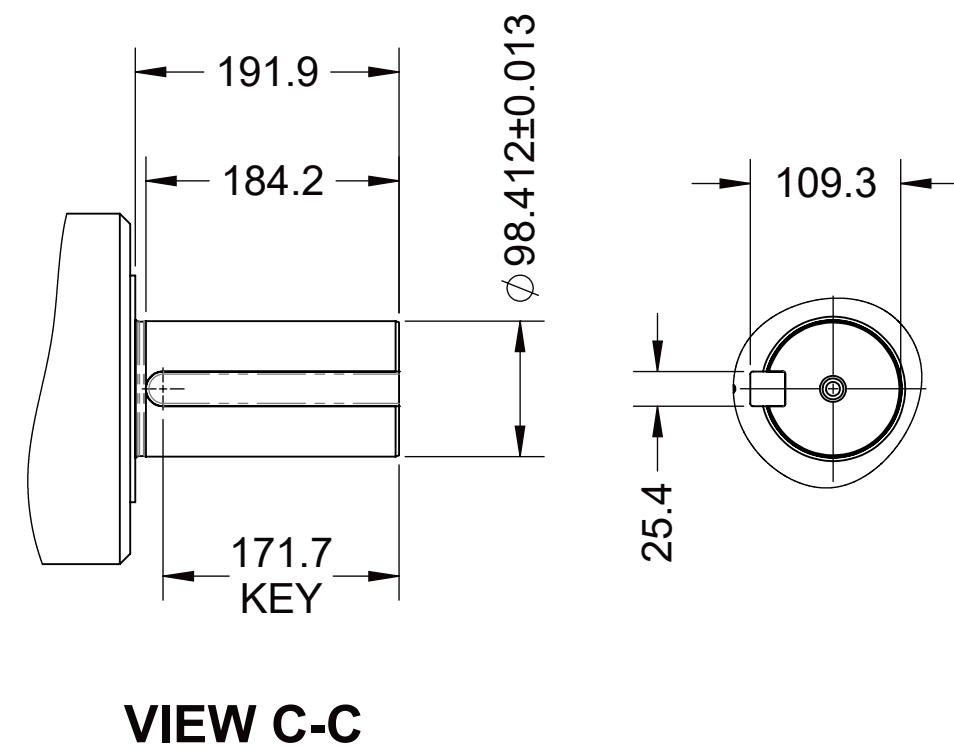
TEST PORTS					
SYMBOL	DESCRIPTION	PORT/ STANDARD	DESCRIPTION	CLEARANCE FOR REMOVAL (mm)	ELECTRICAL CONNECTION
G_1	LUBE	M12 X 1.5 / ISO 6149	O-RING PORT	11.5	-
G_2	LUBE	M14 X 1.5 / ISO 9974	FLAT FACE PORT	12	-
Q_{AC}	FLOW AFTER COOLER	M27 X 2.0 / ISO 6149	O-RING PORT	20	-
Q_{BC}	FLOW BEFORE COOLER	7/8" -14 / UNF	O-RING PORT	-	-
S_i	INPUT SPEED SENSOR (53 PULSES PER REV.)	5/8"-18 / UNF	FLAT FACE PORT	-	DEUTCH DT04-3P
S_o	OUTPUT SPEED SENSOR (65 PULSES PER REV.)	5/8"-18 / UNF	FLAT FACE PORT	-	DEUTCH DT04-3P
T_{AC}	TEMPERATURE AFTER COOLER	M12 X 1.5 / ISO 6149	O-RING PORT	27	DEUTCH DT06-2S
U	BRAKE PRESSURE	M12 X 1.5 / ISO 6149	O-RING PORT	11.5	-
X	MAIN PRESSURE	M12 X 1.5 / ISO 6149	O-RING PORT	11.5	-
Z	CLUTCH PRESSURE	M12 X 1.5 / ISO 6149	O-RING PORT	11.5	-

F



- NOTES:
- A. MANUAL BRAKE RELEASE:
SEE DETAIL 'E'.
- B. MANUAL BRAKE RELEASE SWITCH:
SWITCH IS NORMALLY CLOSED
WHEN MANUAL BRAKE RELEASE IS 'ENGAGED'
- C. PROPORTIONAL CONTROL VALVE AND SOLENOID OPERATION:
1. WARNING DO NOT CONNECT VALVE COIL DIRECTLY TO
BATTERY/ POWER SUPPLY VOLTAGE.
2. OPERATION TO BE PERFORMED WITH ONLY TWIN DISC
CONTROL SYSTEMS OR MODULES
- D. ALL POINTS AVAILABLE FOR TESTING ARE CODED ∇ .
- E. ALL PLUGS AND TEST PORTS ∇ TO BE
TORQUED PER S574 O-RING PORT SPECIFICATIONS
(SEE OWNER'S MANUAL)
- F. REFER TO MANUAL FOR RECOMMENDED OIL, CHECKING, AND
MAINTENANCE PROCEDURES

D



FIRST USE ASSEMBLY: S1035227 FIRST USE MODEL: HP800 SIMILAR TO: 1029600E	WEIGHT: 719 _{kg} WRT: _{kg-m}	THIRD ANGLE PROJECTION	MATERIAL: HEAT TREAT:	DATE: 5/8/2018 SCALE: 1:5.5 DRAWN BY: LT CHECKED BY: YU APPROVED BY: DAJ	DESCRIPTION: INSTALLATION HPTO, HP800	ECNWF-100635 03/19/2021 REV: CHANGE NO. DATE	TWIN DISC RACINE, WI 53403 - USA 1029600F DWG SIZE: A1 SHEET: 1 OF 1 REV: B
--	---	---------------------------	--------------------------	--	--	---	--

A