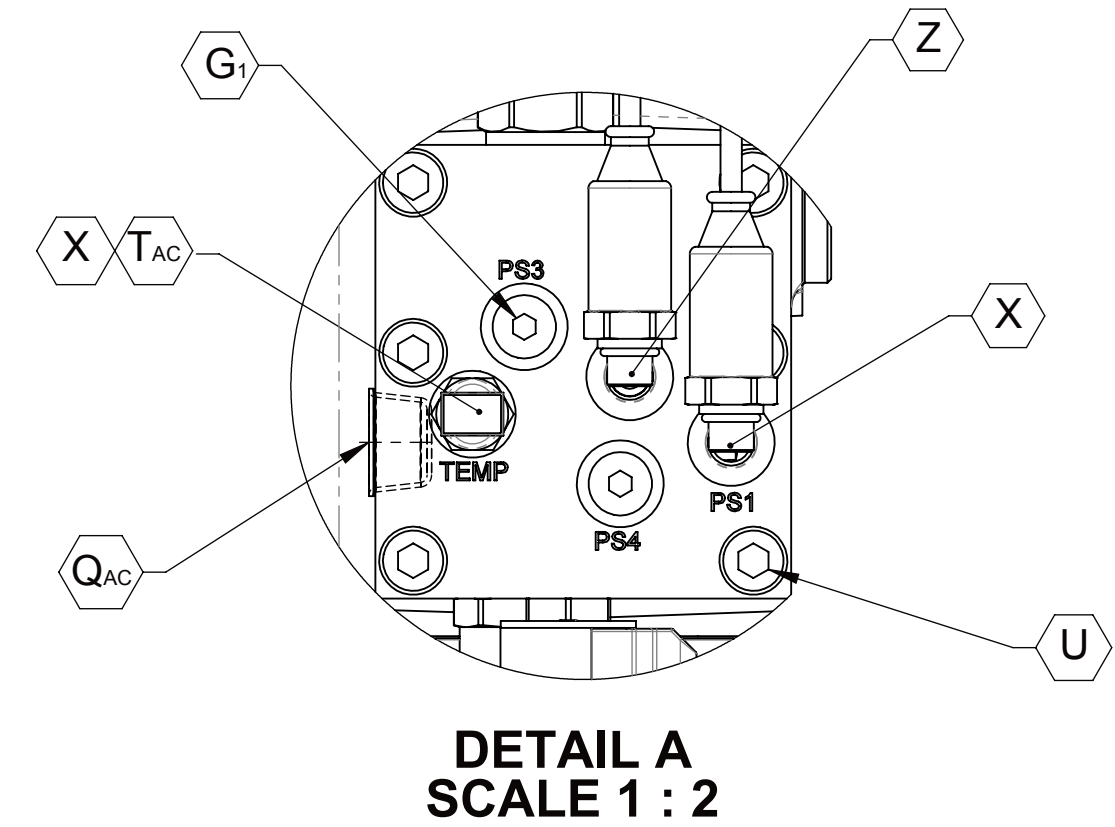
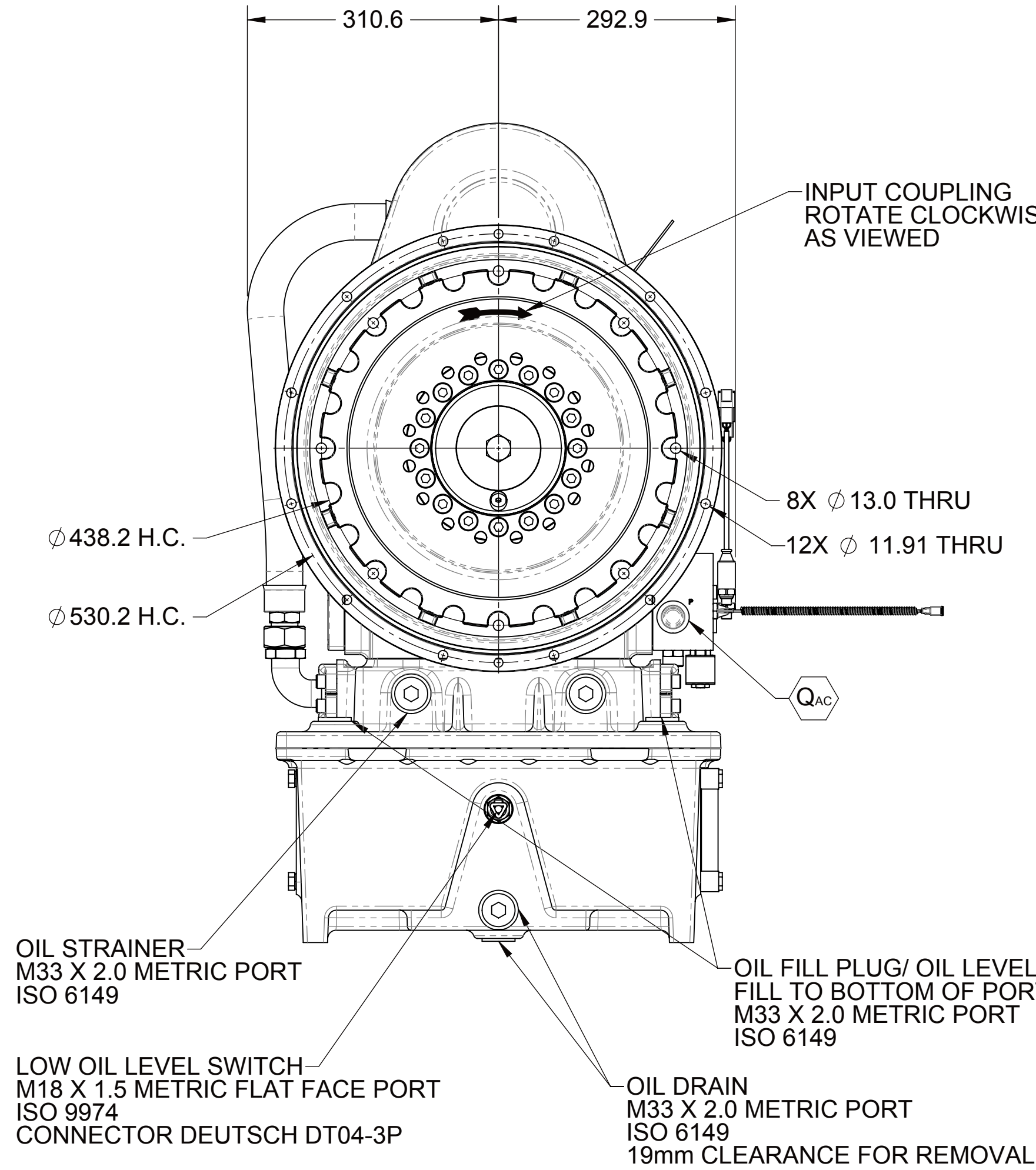


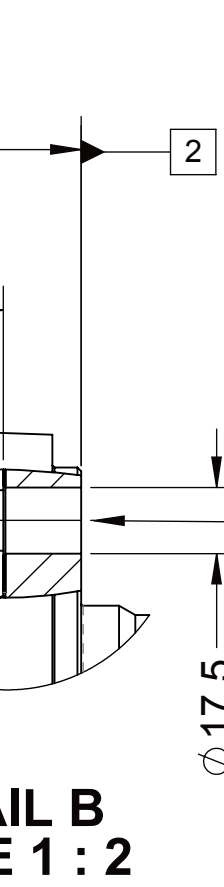
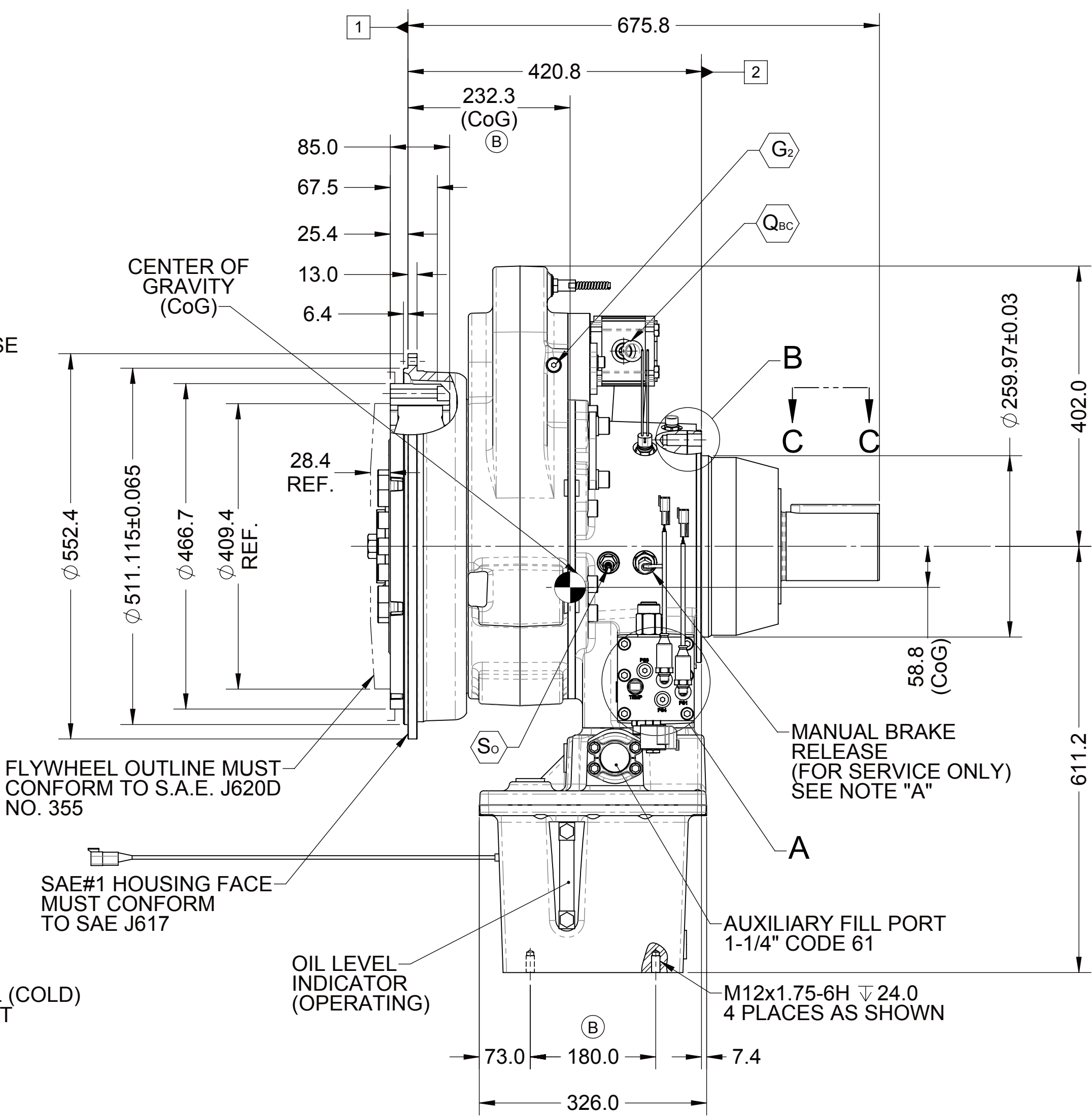
- 1
- ENGINE FLYWHEEL HOUSING MOUNTING FACE

- 2
- SUPPORT PLATE MOUNTING FACE



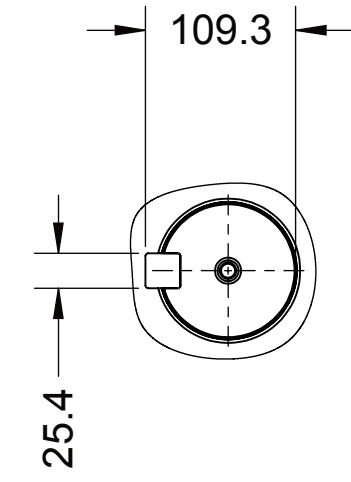
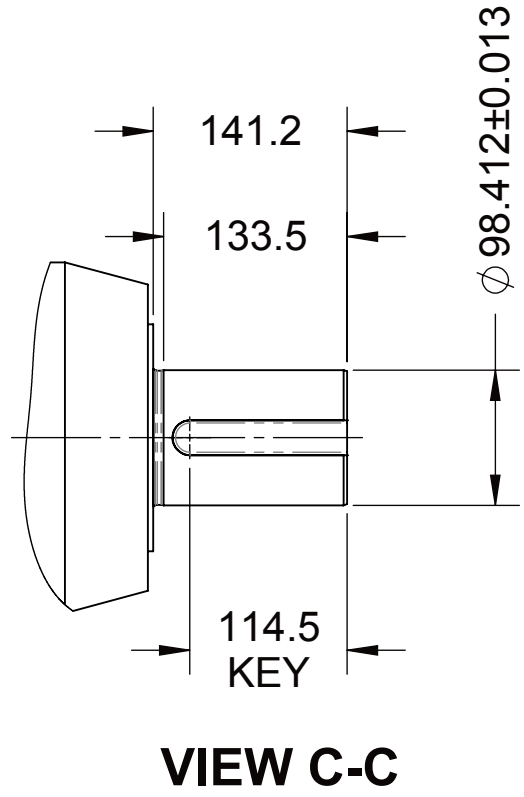
TEST PORTS					
SYMBOL	DESCRIPTION	PORT/ STANDARD	DESCRIPTION	CLEARANCE FOR REMOVAL (mm)	ELECTRICAL CONNECTION
G ₁	LUBE	M12 X 1.5 / ISO 6149	O-RING PORT	11.5	-
G ₂	LUBE	M14 X 1.5 / ISO 9974	FLAT FACE PORT	12	-
Q _{AC}	FLOW AFTER COOLER	M27 X 2.0 / ISO 6149	O-RING PORT	20	-
Q _{BC}	FLOW BEFORE COOLER	7/8" -14 / UNF	O-RING PORT	-	-
S _i	INPUT SPEED SENSOR (77 PULSES PER REV.)	5/8"-18 / UNF	FLAT FACE PORT	-	DEUTCH DT04-3P
S _o	OUTPUT SPEED SENSOR (65 PULSES PER REV.)	5/8"-18 / UNF	FLAT FACE PORT	-	DEUTCH DT04-3P
T _{AC}	TEMPERATURE AFTER COOLER	M12 X 1.5 / ISO 6149	O-RING PORT	27	DEUTCH DT06-2S
U	BRAKE PRESSURE	M12 X 1.5 / ISO 6149	O-RING PORT	11.5	-
X	MAIN PRESSURE	M12 X 1.5 / ISO 6149	O-RING PORT	11.5	-
Z	CLUTCH PRESSURE	M12 X 1.5 / ISO 6149	O-RING PORT	11.5	-

E

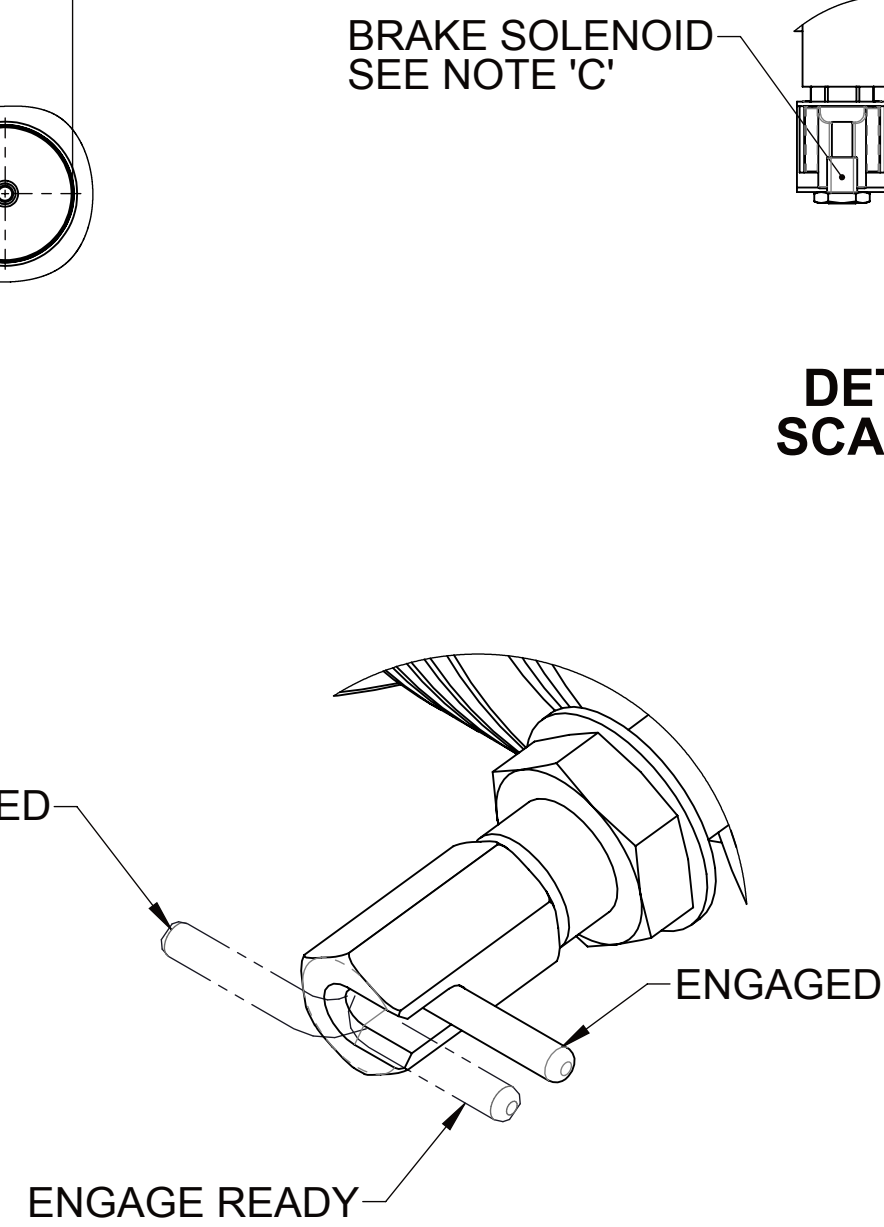


- NOTES:**
- A. MANUAL BRAKE RELEASE: SEE DETAIL 'E'.
- B. MANUAL BRAKE RELEASE SWITCH: SWITCH IS NORMALLY CLOSED WHEN MANUAL BRAKE RELEASE IS 'ENGAGED'
- C. PROPORTIONAL CONTROL VALVE AND SOLENOID OPERATION:
1. WARNING DO NOT CONNECT VALVE COIL DIRECTLY TO BATTERY/ POWER SUPPLY VOLTAGE.
2. OPERATION TO BE PERFORMED WITH ONLY TWIN DISC CONTROL SYSTEMS OR MODULES
- D. ALL POINTS AVAILABLE FOR TESTING ARE CODED ∇ .
- E. ALL PLUGS AND TEST PORTS ∇ TO BE TORQUED PER S574 O-RING PORT SPECIFICATIONS (SEE OWNER'S MANUAL)
- F. REFER TO MANUAL FOR RECOMMENDED OIL, CHECKING, AND MAINTENANCE PROCEDURES

D

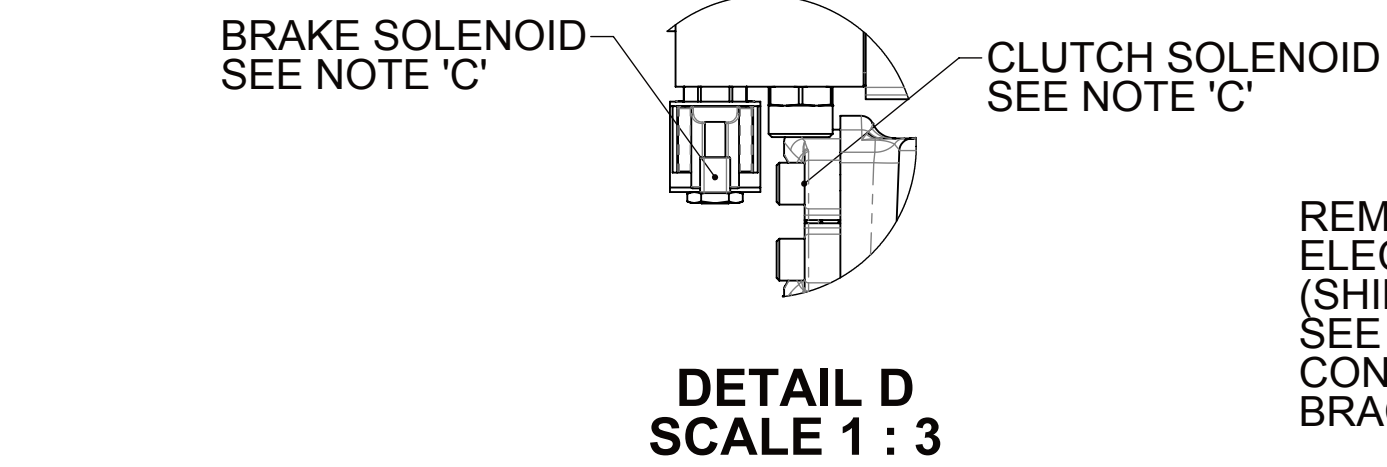
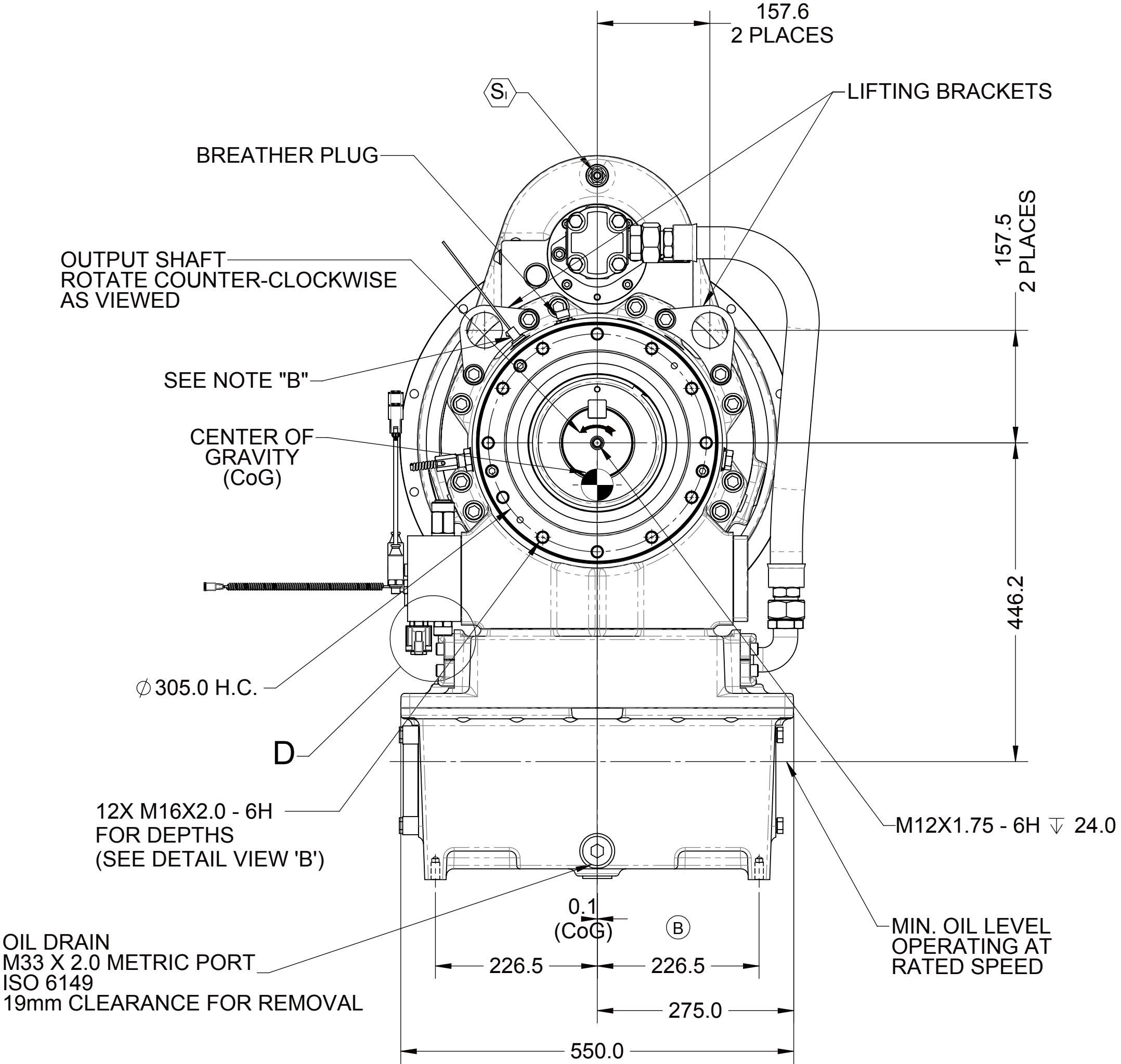


C

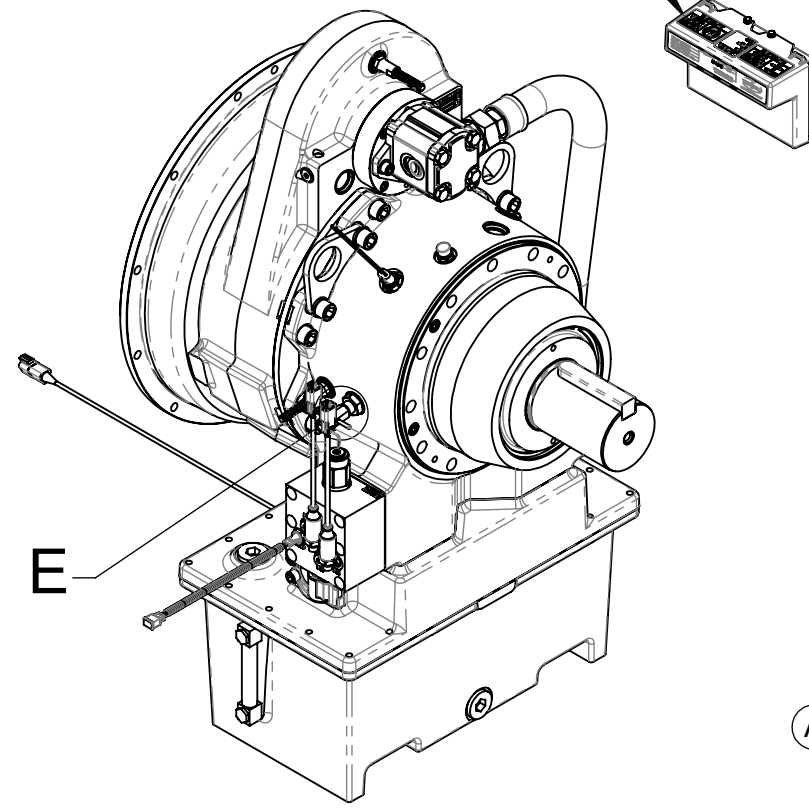


FIRST USE ASSEMBLY: S1031831	WEIGHT: 509kg	THIRD ANGLE PROJECTION	MATERIAL:
FIRST USE MODEL: HP800	WR: kg m ³	UNLESS OTHERWISE SPECIFIED MACHINED DIMENSIONS X \pm 0.75 X XX \pm 0.25 X XXX \pm 0.13	HEAT TREAT:
SIMILAR TO:		ALL ANGULAR TOLERANCES \pm 1° GEOMETRIC TOLERANCING PER ASME Y14.5M 1994	DESCRIPTION:
METRIC			
NOTES: THIS PRINT CONTAINS PROPRIETARY INFORMATION AND IS NOT TO BE USED IN ANY MANNER DETRIMENTAL TO THE INTEREST OF TWIN DISC, INCORPORATED. THIS NOTICE IS NOT INTENDED TO LIMIT OR LIMIT RIGHTS GRANTED TO THE U.S. GOVERNMENT OR OTHERS BY CONTRACT.			
INSTALLATION HPTO, HP800			

B



REMOTE MOUNTED ELECTRONIC CONTROLLER & BRACKET (SHIPPED LOOSE)
SEE INSTALLATION DRAWINGS:
CONTROLLER : PX1040894
BRACKET : PX1037967



B	ECNWF-100635	03/19/2021
REV	CHANGE NO.	DATE
TWIN(DISC)		
RACINE, WI 53403 - USA		
1029600G		
DATE: 1/5/2017	SCALE: 1:5.5	DRAWN BY: APA
CHECKED BY: JEL	APPROVED BY: GAM	DWG SIZE: A1
SHEET: 1 OF 1	REV: B	

A

1

1025420W Rev. B