

**MGX-5114 SERIES**

**MAXIMUM 673 kW (900 HP)  
@ 2300 RPM (PLEASURE CRAFT)**

**STANDARD EQUIPMENT**

**MGX-5114SC/MGX-5114IV/MGX-5114RV**

- Vertical offset, aluminum housing
- Electric GP-valve with manual override
- EC600PC profile module – interface for engagement signals
- Oil strainer and oil filter

**MGX-5114SC**

- SAE J617 housing no. 1

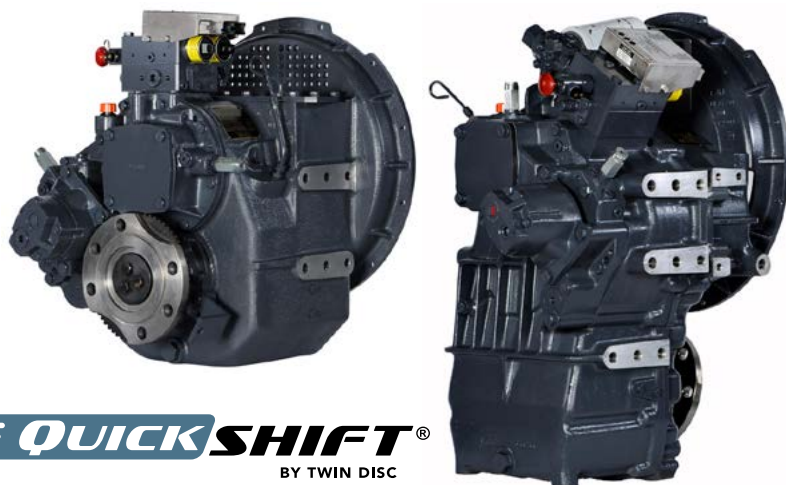
**MGX-5114IV**

- 14° down angle on output shaft

**MGX-5114RV**

- 7° down angle on output shaft
- Input flange size GWB 587.50
- Steel fabricated mounting brackets

**QUICKSHIFT®**  
BY TWIN DISC

**INPUT RATINGS**

Reduction Ratios :1		Pleasure Craft @ 2300 RPM	Light Duty @ 2300 RPM	Intermediate Duty @ 2100 RPM	Medium Duty @ 1800 RPM	Continuous Duty @ 1800 RPM	Input Speed Limits
<b>MGX-5114SC</b>	0.93, 1.02, 1.12 1.50, 1.74, 2.04	673 kW (900 hp)	629 kW (843 hp)	504 kW (676 hp)	394 kW (528 hp)	358 kW (480 hp)	450 min.– 3000 max. (2800 max. for 0.93:1)
	2.54			466 kW (625 hp)			
	3.00	578 kW (775 hp)	540 kW (724 hp)	451 kW (605 hp)	361 kW (484 hp)	328 kW (440 hp)	
<b>MGX-5114IV</b>	1.05, 1.23, 1.52 1.80, 1.98	673 kW (900 hp)	629 kW (843 hp)	466 kW (625 hp)	357 kW (479 hp)	347 kW (465 hp)	450 min.– 3000 max.
	2.57	649 kW (870 hp)	607 kW (814 hp)	400 kW (536 hp)	338 kW (453 hp)	321 kW (430 hp)	
<b>MGX-5114RV</b>	1.03, 1.20, 1.48 1.75, 1.92, 2.04	673 kW (900 hp)	629 kW (843 hp)	466 kW (625 hp)	357 kW (479 hp)	347 kW (465 hp)	450 min.– 3000 max.
	2.50			400 kW (536 hp)	338 kW (453 hp)	321 kW (430 hp)	

For service classification definitions and important notes refer to the Twin Disc Marine Product Guide or contact Twin Disc directly.  
Ratings shown for use with standard right hand rotation engines.

**EC600PC ELECTRONIC PROPULSION CONTROL SYSTEM**

- Optional equipment: display and joystick



## OPTIONAL EQUIPMENT

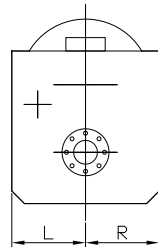
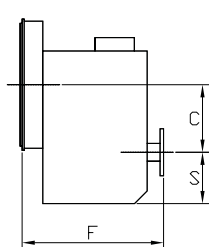
### MGX-5114SC/MGX-5114IV/MGX-5114RV

- Mechanical control valve
- Input flange size GWB 587.50 for freestanding installation (*standard on MGX-5114RV*)
- EC600PC e-troll module and propulsion control system
- Oil cooler with thermostatic bypass valve
- Companion flange/bolts set
- Monitoring devices to customer's specification
- Mounting brackets (*standard on MGX-5114RV*)
- Live PTO: SAE J744 size 127-4, 32-4 (SAE "C", 4-bolt) – max. 592 Nm

### MGX-5114SC/MGX-5114IV ONLY

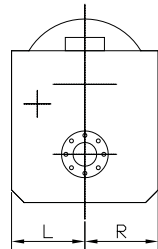
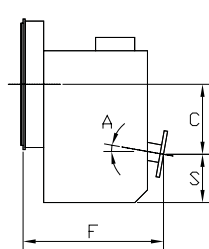
- SAE J617 housing no. 1
- Flexible coupling for 14" flywheel (SAE J620 size 355)
- Flexible coupling for 11.5" flywheel (SAE J620 size 290)
- Live PTO
  - SAE J744 size 82-2, 16-4 (SAE "A", 2-bolt) – max. 58 Nm
  - SAE J744 size 101-2, 22-4 (SAE "B", 2-bolt) – max. 209 Nm
  - SAE J744 size 101-2, 25-4 (SAE "B-B", 2-bolt) – max. 338 Nm
  - SAE J744 size 127-4, 32-4 (SAE "C", 4-bolt) – max. 593 Nm
- Hydraulic clutchable PTO: SAE J744 size 127-4, 32-4 (SAE "C", 4-bolt) – max. 600 Nm

### MGX-5114SC



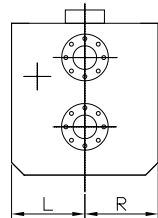
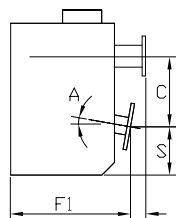
C	190 mm (7.47")
S	161 mm (6.33")
F	483 mm (19.00")
L	279 mm (11.00")
R	191 mm (7.50")
Weight*	216 kg

### MGX-5114IV



C	264 mm (10.40")
S	146 mm (5.75")
F	62 mm (2.43")
F1	489 mm (19.26")
L	292 mm (11.50")
R	191 mm (7.50")
A	14°
Weight*	269 kg

### MGX-5114RV



C	203 mm (8.00")
S	133 mm (5.25")
F	54 mm (2.12")
F1	449 mm (17.69")
L	279 mm (11.00")
R	203 mm (8.00")
A	7°
Weight*	240 kg

\*Dry weight including SAE no. 1 housing and SAE 355 flexible coupling

Twin Disc, Incorporated reminds users of these products that their safe operation depends on use in compliance with engineering information provided in our product guides, installation/assembly drawings and/or manuals. Users are also reminded that safe operation depends on proper installation, operation and routine maintenance and inspection under prevailing conditions. It is the responsibility of users (and not Twin Disc, Incorporated) to provide and install guards or safety devices which may be required by recognized safety standards or by the Occupational Safety and Health Act of 1970 and its subsequent provisions.

USA • AUSTRALIA • BELGIUM • CHINA • INDIA • ITALY • NETHERLANDS • SINGAPORE • SWITZERLAND

Since 1918, we've been putting horsepower to work by designing, engineering and manufacturing rugged-duty industrial products. Our products and our reputation are bolted to the most renowned engine manufacturers and equipment OEMs in the world. Our mission is to make boats, machines and off-highway vehicles more productive, more durable, more operator-friendly, and more cost-effective. From design and installation consultation through after-sale support, Twin Disc and its distributors are committed to your business. No one knows more about managing horsepower in more ways than Twin Disc.

#### TRANSMISSIONS

#### ELECTRONIC CONTROLS

#### EXPRESS JOYSTICK SYSTEM®

#### SAILDRIVES

#### EXPRESS POSITIONING®

#### ARNESON® SURFACE DRIVES

#### MARINE CONTROL DRIVES

#### ROLLA™ PROPELLERS

#### THRUSTERS

#### VETH PROPULSION SYSTEMS

#### STEERING SYSTEMS

#### RUDDERS

#### TRIM TABS

#### PUMP DRIVES

#### PTOS



Twin Disc, Incorporated  
Racine, Wisconsin 53403 USA  
Phone +1-262-638-4000  
Fax +1-262-638-4482  
www.twindisc.com

2102\_Bulletin\_MGX-5114\_Series  
© 2021, Twin Disc, Incorporated  
Printed in the USA