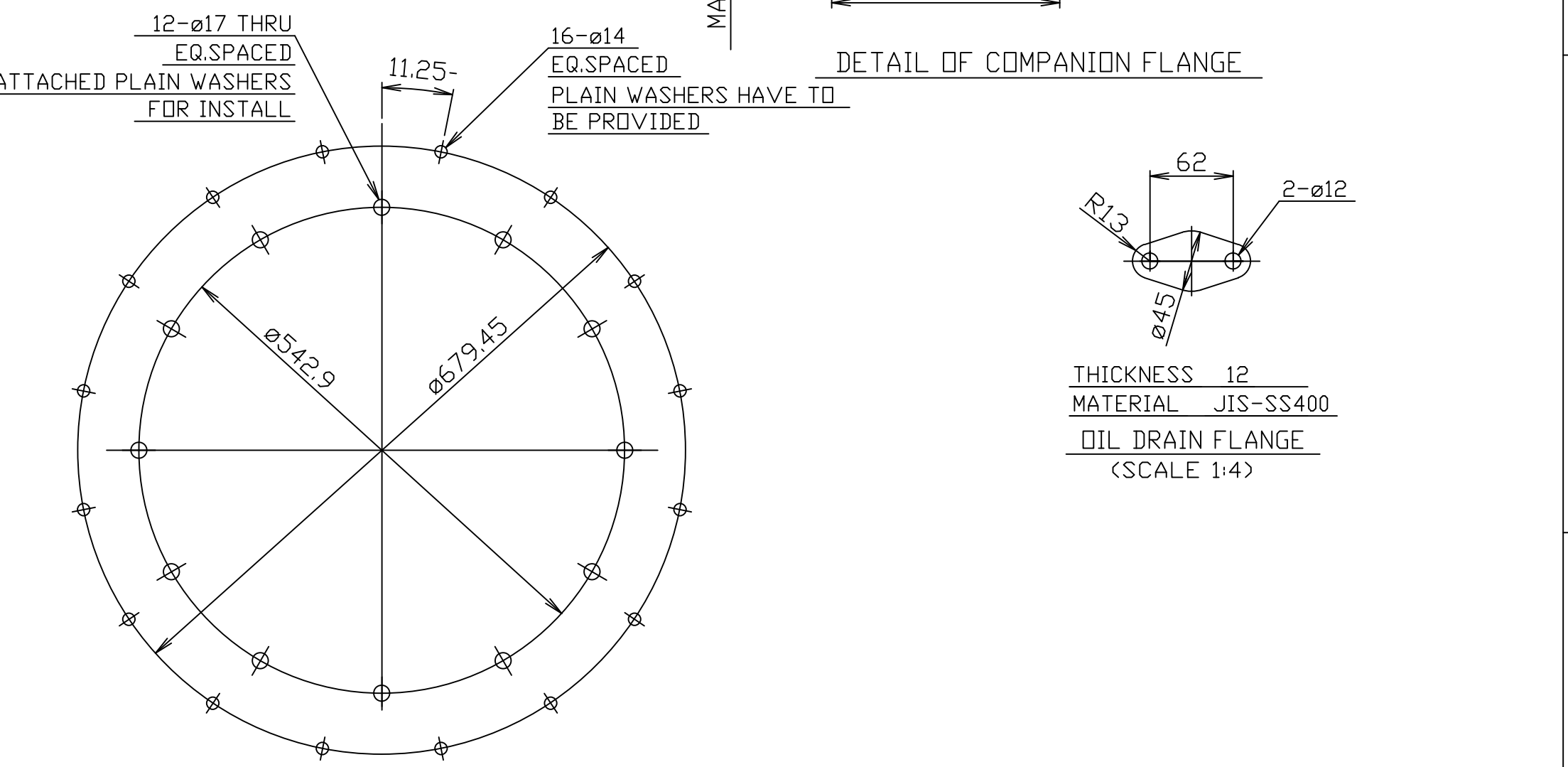
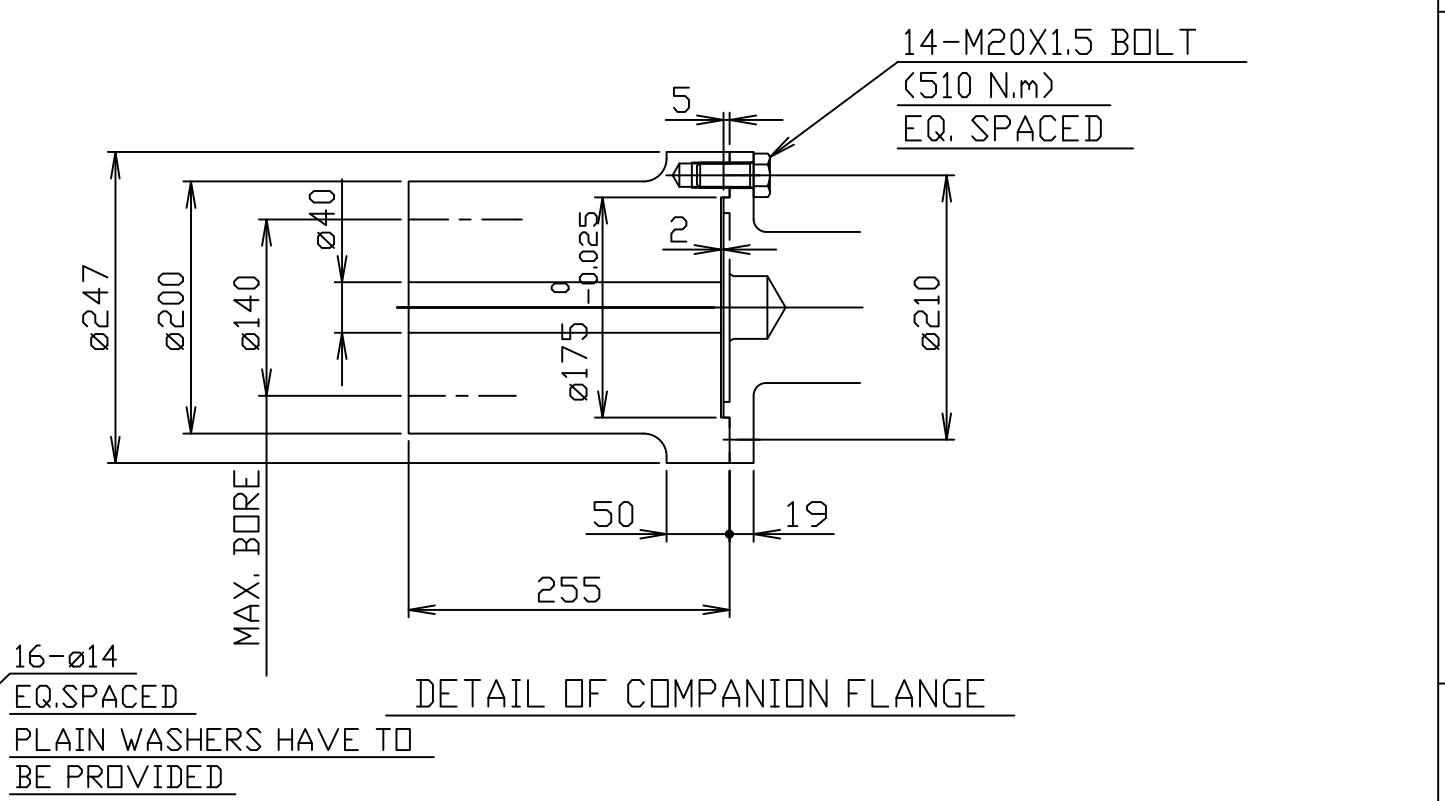
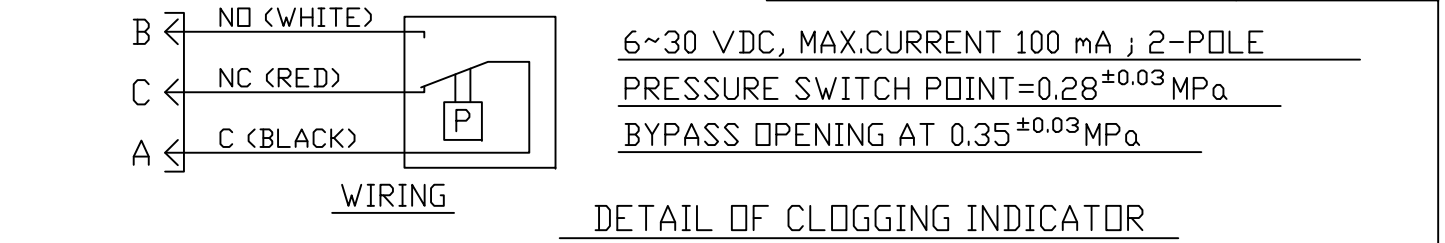


MGX-6620SC MARINE GEAR SPECIFICATIONS			
GEAR RATIO	1.15 1.33 1.53 1.73 2.03 2.32 2.44 2.72		
MASS	TOTAL MASS (DRY)	APPROX. 690 kg	
	BASIC UNIT (DRY)	APPROX. 465 kg	
	INPUT HOUSING	22 kg	
	INPUT COUPLING AND FLANGE	50 kg	
	BRACKET	88 kg	
OIL QUANTITY	COMPANION FLANGE	65 kg	
	APPROX. 22 L		
OIL PRESSURE	CLUTCH OIL	2.2~2.4 MPa	AT RATED ENGINE SPEED
	LUBE OIL	0.4~0.6 MPa	OIL TEMP. 65~70-C
OIL VISCOSITY	SAE #40 (MULTI-GRADE OIL IS NOT APPROVED)		
OIL & GREASE CHANGE INTERVAL	THE FIRST OIL CHANGE AT 100 HOURS OF OPERATION AND SUBSEQUENTLY EVERY 1000		
	HOURS OF OPERATION		
STRAINER	WIRE NETTING		
SHIFTING RESTRICTION	SHIFT TO FORWARD OR REVERSE FROM NEUTRAL AND SHIFT ACROSS NEUTRAL SHALL BE MADE AT ENGINE SPEED LOWER THAN 50% OF THE RATED SPEED		
HEAT EXCHANGER			- L/min.
			- C MAX.
		SECTIONAL VIEW DWG NO.	7-40421-H
		GEAR PUMP TOOTH WIDTH	44 mm



REV	BY	APPD.	REV	ZONE	CH. NO.	DATE	REV	ZONE	CH. NO.	DATE

NOTICE! THIS PRINT CONTAINS
PROPRIETARY INFORMATION AND IS
NOT TO BE USED IN ANY MANNER
DETRIMENTAL TO THE INTERESTS OF
TWIN DISC, INCORPORATED
RACINE, WI 53403 - USA
THIS NOTICE IS NOT INTENDED
TO NULLIFY OR LIMIT RIGHTS
GRANTED TO THE U.S. GOVERNMENT
OR OTHERS BY CONTRACT.

MATERIAL	-
HEAT TREAT	-
SURFACE TREATMENT	-

MASS	0.0 kg
VR	N/A
FIRST USE	
ASSY.	MGX-6620SC
NAME	

UNLESS OTHERWISE SPECIFIED DIMENSIONS ARE IN mm MACHINED DIMENSIONS X.X ±0.25 X.XX ±0.13 ALL ANGULAR TOLERANCES ±1° GEOMETRIC TOLERANCING PER ANSI Y14.5M 1982	DATE 110704
SCALE 1:6	DRN. T.Inoue
CHK. KS	APPD. KS
GENERAL VIEW	

1