

# AM 080

MAXIMUM INPUT POWER 1200 HP (895 kW)  
FOR 1:1 RATIO @ 1,800 RPM

## PRODUCT FEATURES:

- Compact design - 1:1 ratio throughput
- Single & dual tower options
- Pump tower ratios: 1.00:1, 0.87:1, & 0.77:1
- Up to 4 pump pads available
- SAE #3 through SAE #0 input/output housings
- SAE 11.5" through SAE 18" input/output flywheel connection
- SAE "A" through SAE "E" pump pads & splines

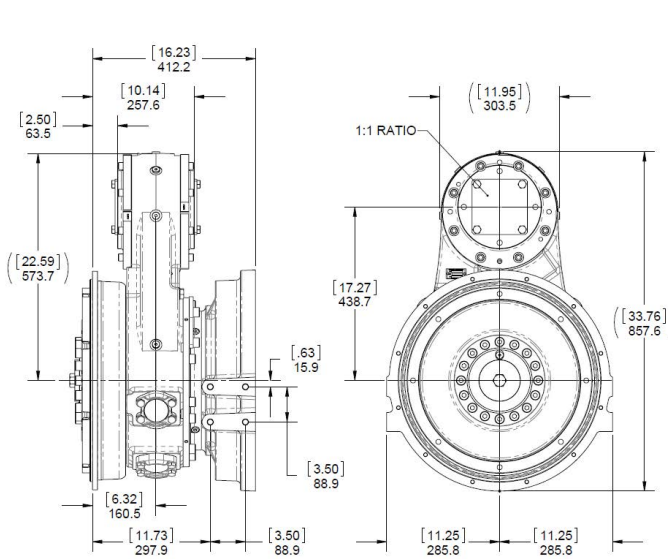


## AM 080 TECHNICAL DATA

Model Number	Maximum Power Rating			Maximum Speed (RPM)	Pump Tower Capacity		Weight Kg (lbs)
	@ 1200 RPM	@ 1800 RPM	@ 2200 RPM		1 Tower (2 Pads)	2 Tower (4 Pads)	
AM080D	800 HP (597 kW)	1200 HP (895 kW)	1533 HP (1144 kW)	3000	400 HP (298 kW)	450 HP (336 kW)	480 kg (1058 lbs)*
AM080S					350 HP (261 kW)	N/A	385 kg (849 lbs)*

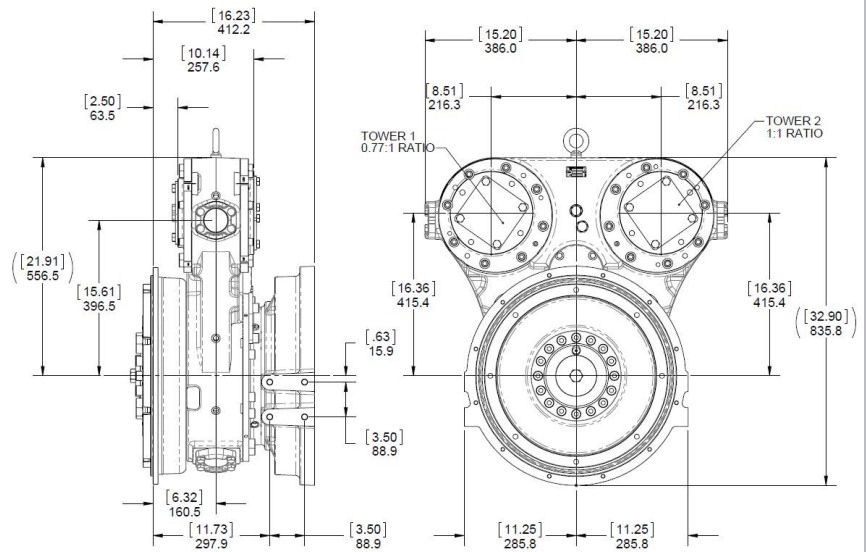
\*Includes SAE 1 Input & SAE 1 Flywheel Output

### AM 080S



Dimensions are in mm [inches]

### AM 080D



Dimensions are in mm [inches]

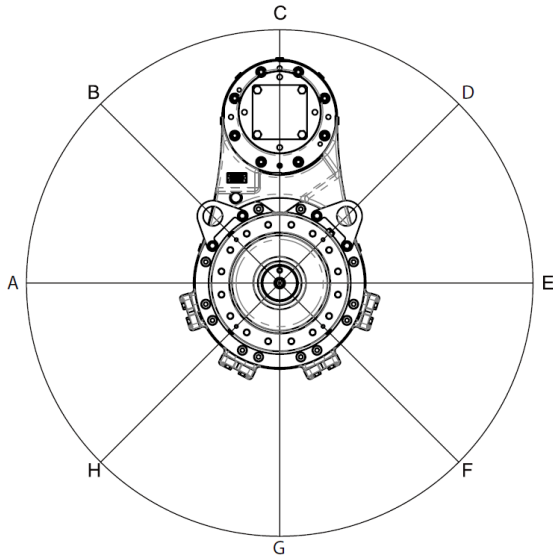


Specifications subject to change without prior notice in the interest of continual product improvement. Contact your local Twin Disc representative for engineering specifications. Patent pending.

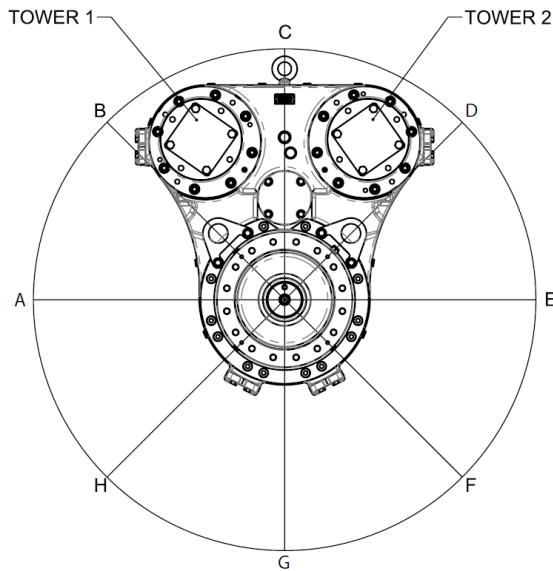
Scan QR code to see Twin Disc's entire Industrial product line.



**TOWER POSITION CHART:**  
(AS VIEWED FROM OUTPUT, CURRENTLY  
SHOWN IN POSITION C)



**TOWER POSITION CHART:**  
(AS VIEWED FROM OUTPUT, CURRENTLY  
SHOWN IN POSITION C)



For nearly a century, we've been putting horsepower to work by designing, engineering and manufacturing rugged-duty industrial products. Our products and our reputation are bolted to the most renowned engine manufacturers and equipment OEMs in the world. Our mission is to make your machines and vehicles more productive, more durable, more operator-friendly, more cost-effective. From design and installation consultation through after-sale support, Twin Disc and its distributors are committed to your business. No one knows more about managing horsepower in more ways than Twin Disc.

**TRANSMISSIONS • CLUTCHES • PTOS • PUMP DRIVES • TORQUE CONVERTERS • GEARBOXES • HYDRAULIC PTO PRODUCTS**

Twin Disc, Incorporated reminds users of these products that their safe operation depends on use in compliance with engineering information provided. Users are also reminded that safe operation depends on proper installation, operation and routine maintenance and inspection under prevailing conditions. It is the responsibility of users (and not Twin Disc, Incorporated) to provide and install guards or safety devices which may be required by recognized safety standards or by the Occupational Safety and Health Act of 1970 and its subsequent provisions.

United States of America • Australia • Belgium • Canada • China • India • Italy • Singapore • Switzerland



Twin Disc, Incorporated  
Racine, Wisconsin 53403 USA  
Phone +1-262-638-4000  
Fax +1-262-638-4482  
[www.twindisc.com](http://www.twindisc.com)

Bulletin-AM080  
© 2019, Twin Disc, Incorporated  
Printed in the USA - 5/2019