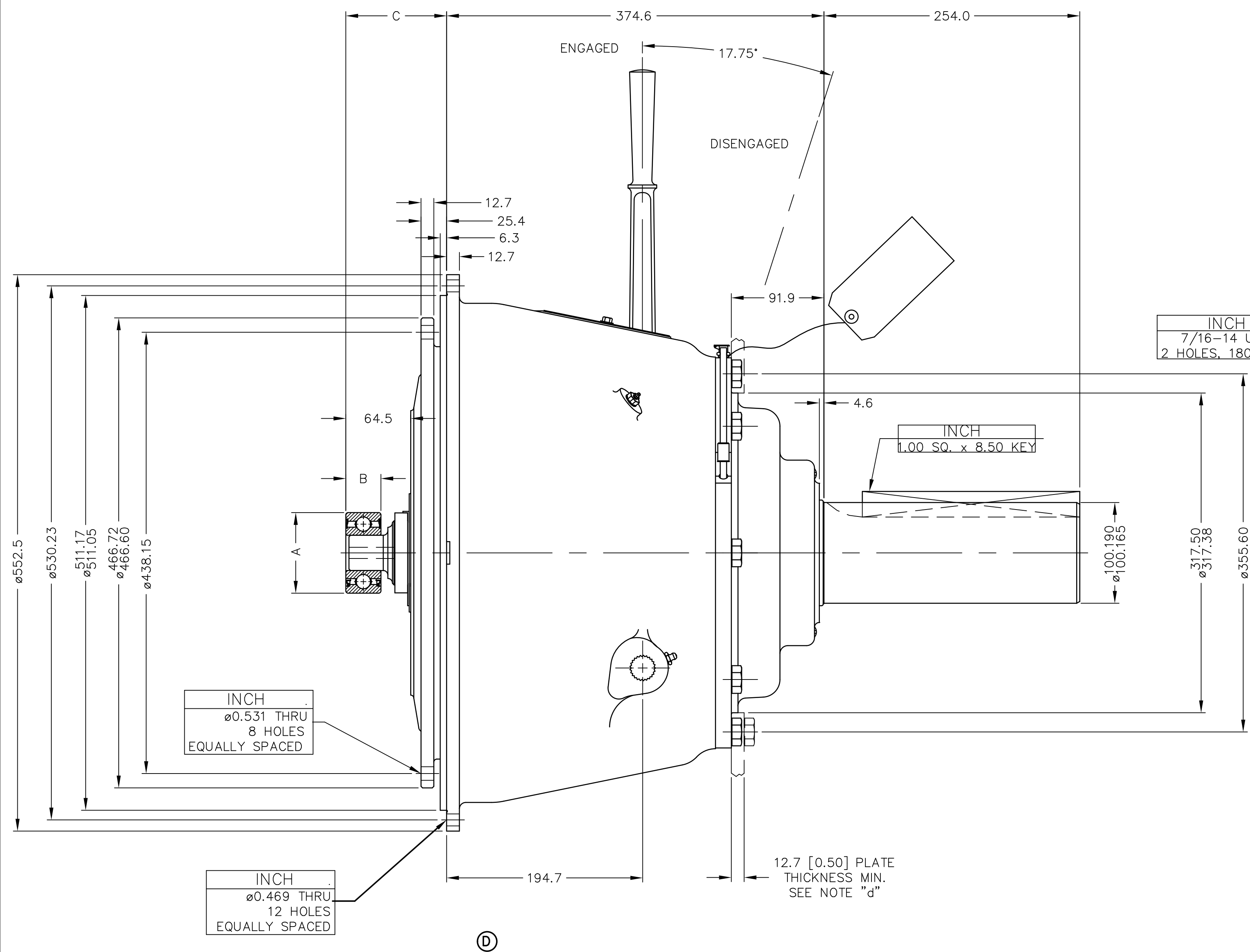


NOTE:
TO INSURE NO PRELOAD ON SHIFTING
MECHANISM. HAND LEVER POSITION IN THE
ENGAGED POSITION SHOULD BE VERTICAL OR
SLIGHTLY OVER CENTER OF DISENGAGED
POSITION.



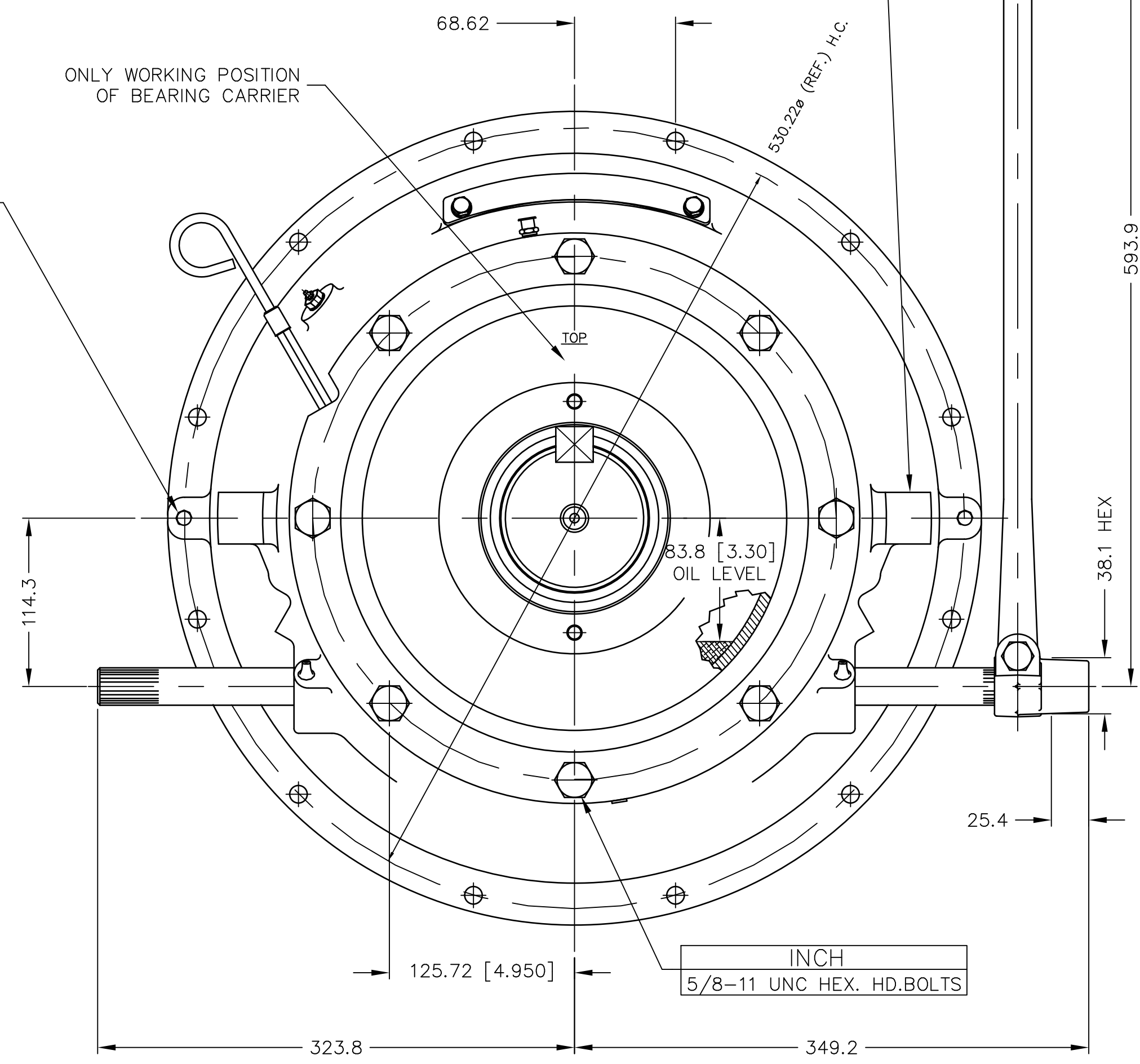
INCH
7/16-14 UNC THRU
2 HOLES, 180° APART

INCH
1.00 SQ. x 8.50 KEY

INCH
0.531 THRU
8 HOLES
EQUALLY SPACED

INCH
0.469 THRU
12 HOLES
EQUALLY SPACED

SPECIAL NOTE:
HOUSING HAS TWO POSSIBLE
POSITIONS, HAND HOLE AS SHOWN
OR ROTATED 90° TO HERE.



INCH
5/8-11 UNC HEX. HD.BOLTS

ⓓ

PTO	SHAFT	PILOT BEARING	BEARING TYPE	A	B	C	RECOMMENDED FLYWHEEL BORE
IB214P101	B5244C	M2327	BALL	100.000 99.985	39.70	100.1	100.018 99.993
IB214P102	B5267B	M2529	ROLLER	80.025 80.013	34.93	97.0	80.010 79.995
IB214P103	B5267B	M1985A	BALL	80.000 79.987	34.90	100.1	80.010 79.995
IB214P104	B5244C	M2327	BALL	100.000 99.985	39.70	100.1	100.018 99.993
IB214P105	B5244C	M2327	BALL	100.000 99.985	39.70	100.1	100.018 99.993

GENERAL NOTES:
a.) REFER TO BOM LIST WHEN ORDERING PARTS.
b.) REFER TO CARE & OPERATION MANUAL FOR ADDITIONAL INFO.
c.) A SUPPORT PLATE MUST BE USED WHEN SIDE LOADS ARE APPLIED TO SHAFT.

TWIN DISC
INCORPORATED
RACINE, WI 53403 - USA

DATE 08-07-96
SCALE .25 = 1
DRN. RDW
CHK. TRL
APPD. JMS
DWG SIZE A1
SHT. 2 OF 2
REV D

UNLESS OTHERWISE SPECIFIED DIMENSIONS ARE mm MACHINED DIMENSIONS X. ±0.75 X.X. ±0.25 X.XX ±0.13 ALL ANGULAR TOLERANCES ±1° GEOMETRIC TOLERANCING PER ASME Y14.5M 1994	WEIGHT kg	WR ² N.m ²	FIRST USE ASSY. IB214P101 MODEL IB214OP1	METRIC	MATERIAL SIMILAR TO	HEAT TREAT	NAME IBF214OP1 POWER TAKE-OFF
NOTICE: THIS PRINT CONTAINS PROPRIETARY INFORMATION AND IS NOT TO BE USED IN ANY MANNER DETRIMENTAL TO THE INTEREST OF TWIN DISC, INCORPORATE THIS NOTICE IS NOT INTENDED TO NULLIFY OR LIMIT RIGHTS GRANTED TO THE U.S. GOVERNMENT OR OTHERS BY CONTRACT.				THIRD ANGLE PROJECTION			