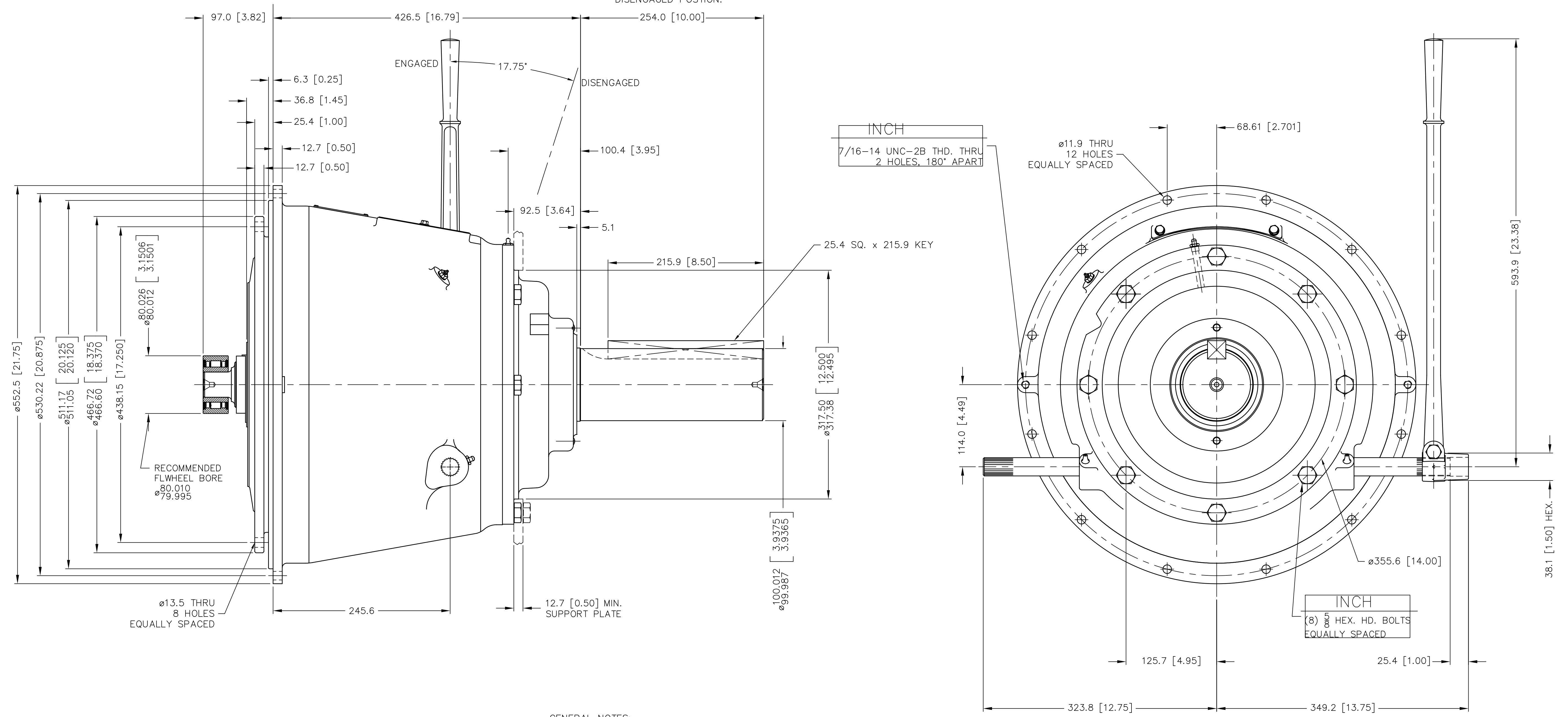


NOTE:
TO INSURE NO PRELOAD ON SHIFTING MECHANISM. HAND LEVER POSITION IN THE ENGAGED POSITION SHOULD BE VERTICAL OR SLIGHTLY OVER CENTER OF DISENGAGED POSITION.



GENERAL NOTES:
a.) REFER TO BILL OF MATERIAL LIST WHEN ORDERING PARTS.
b.) REFER TO CARE & OPERATION MANUAL FOR ADDITIONAL INFO.
c.) A SUPPORT PLATE MUST BE USED.

| | | | | | | | | | | | |
|--|--|--------------|-------------------------------------|---|------------------------|------------------------------------|------------|--|--|--|----------|
| UNLESS OTHERWISE SPECIFIED DIMENSIONS ARE mm MACHINED DIMENSIONS X ±0.75 X.X ±0.25 X.XX ±0.13 ALL ANGULAR TOLERANCES ±1° GEOMETRIC TOLERANCING PER ASME Y14.5M 1994 | | WEIGHT kg | WR ³ N·m ² | FIRST USE ASSY. IB314P112 MODEL IB314P1 | METRIC | MATERIAL SIMILAR TO | HEAT TREAT | DATE 06/12/96 SCALE .38 = 1 DRN. RDW CHK. TRL APPD. JMS | TWIN DISC INCORPORATED RACINE, WI 53403 - USA IB314P112 | DATE 06/12/96 SCALE .38 = 1 DRN. RDW CHK. TRL APPD. JMS | REV E |
| NOTICE: THIS PRINT CONTAINS PROPRIETARY INFORMATION AND IS NOT TO BE USED IN ANY MANNER DETRIMENTAL TO THE INTEREST OF TWIN DISC. INCORPORATE THIS NOTICE IS NOT INTENDED TO NULLIFY OR LIMIT RIGHTS GRANTED TO THE U.S. GOVERNMENT OR OTHERS BY CONTRACT. | | | | | THIRD ANGLE PROJECTION | NAME IBF314P1 POWER TAKE-OFF | SIZE A1 | SHT. 2 OF 2 | REV E | | |