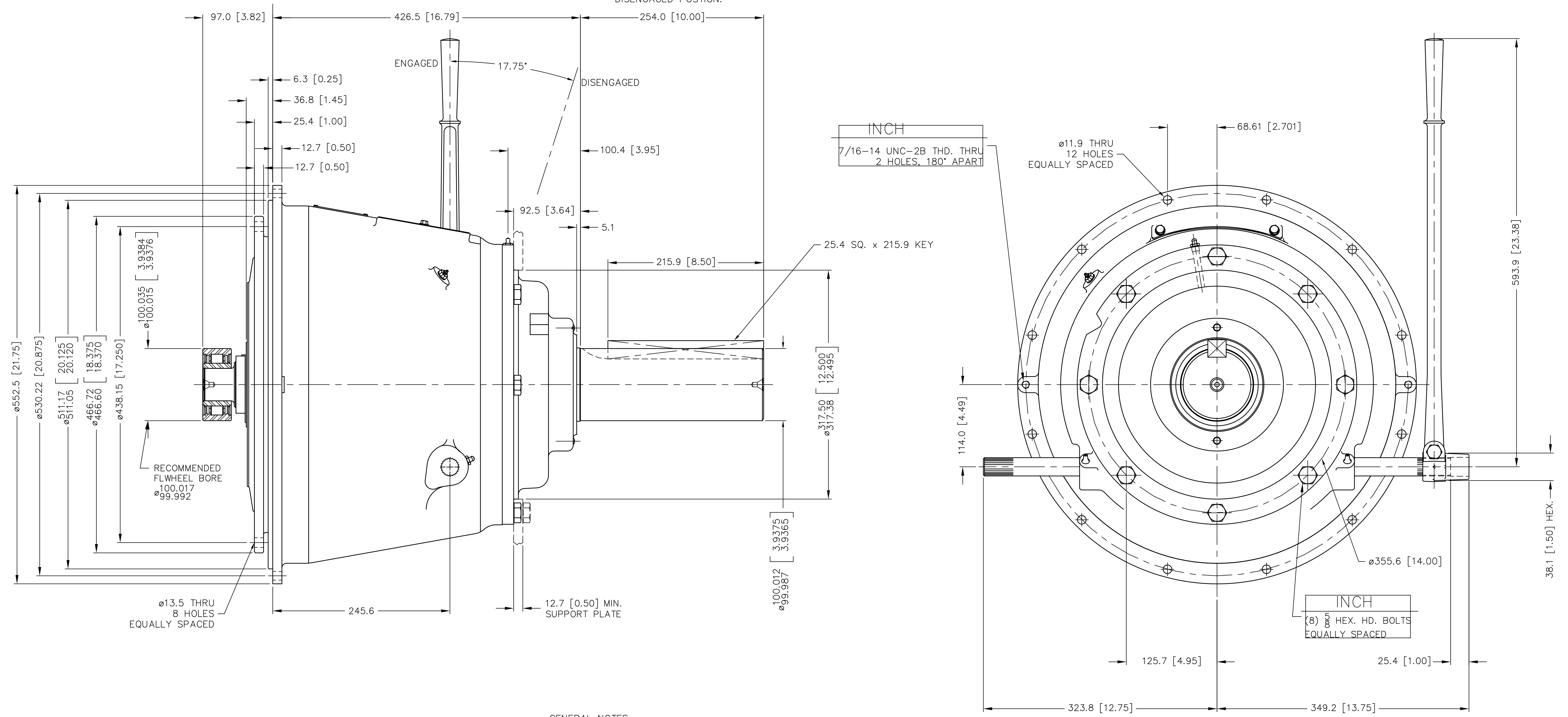


NOTE:
TO INSURE NO PRELOAD ON SHIFTING MECHANISM. HAND LEVER POSITION IN THE ENGAGED POSITION SHOULD BE VERTICAL OR SLIGHTLY OVER CENTER OF DISENGAGED POSITION.



GENERAL NOTES:
a.) REFER TO BILL OF MATERIAL LIST WHEN ORDERING PARTS.
b.) REFER TO CARE & OPERATION MANUAL FOR ADDITIONAL INFO.
c.) A SUPPORT PLATE MUST BE USED.

UNLESS OTHERWISE SPECIFIED DIMENSIONS ARE mm MACHINED DIMENSIONS X ±0.75 X.X ±0.25 X.XX ±0.13 ALL ANGULAR TOLERANCES ±1° GEOMETRIC TOLERANCING PER ASME Y14.5M 1994	WEIGHT	WR ¹	FIRST USE	METRIC	MATERIAL	HEAT TREAT	DATE	TWIN DISC INCORPORATED RACINE, WI 53403 - USA	
	kg	N.m ²	ASSY. IB314P103 MODEL IB314P1				04-15-04		
NOTICE: THIS PRINT CONTAINS PROPRIETARY INFORMATION AND IS NOT TO BE USED IN ANY MANNER DETRIMENTAL TO THE INTEREST OF TWIN DISC. INCORPORATE THIS NOTICE IS NOT INTENDED TO NULLIFY OR LIMIT RIGHTS GRANTED TO THE U.S. GOVERNMENT OR OTHERS BY CONTRACT.				THIRD ANGLE PROJECTION	SIMILAR TO XA7149F	NAME IBF314P1 POWER TAKE-OFF	SCALE .38 = 1	REV	
							DRN. RDW	IB314P123	
							CHK. TRL		
							APPD. JMS	DWG SIZE A1	SHT. 2 OF 2