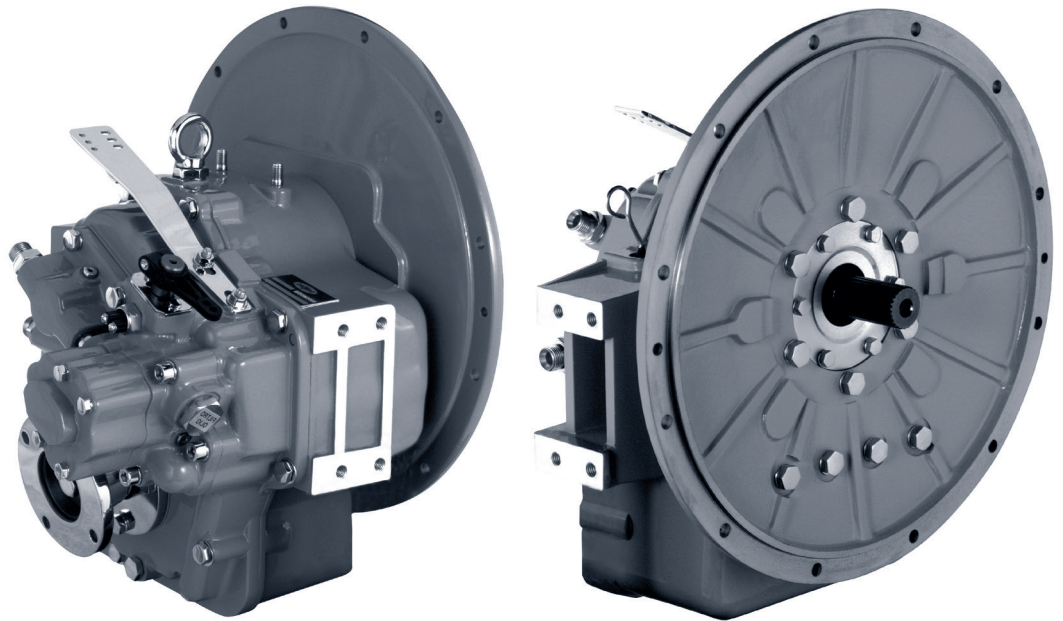


Maximum 298 kW (400 hp) @3600 RPM (PLEASURE CRAFT)

STANDARD EQUIPMENT

MG-5055A

- Vertical offset, aluminum housing
- 10° down angle on output shaft
- Mechanical control valve
- Oil strainer



INPUT RATINGS - KILOWATS (KW) (HORSEPOWER (HP))*

For service classification definitions and important notes refer to www.twindisc.com, the Twin Disc Marine Product Guide or contact Twin Disc directly.

Reduction Ratios :1	Pleasure Craft		Intermediate Duty		Continuous Duty	
	@ 2800 RPM	@ 3600 RPM	@ 2500 RPM	@ 3200 RPM	@ 2300 RPM	@ 2500 RPM
1.53, 2.08	261 kW (350 hp)	298 kW (400 hp)	175 kW (235 hp)	224 kW (300 hp)	135 kW (181 hp)	146 kW (196 hp)
2.60	176 kW (236 hp)	226 kW (303 hp)	118 kW (158 hp)	151 kW (203 hp)	77 kW (103 hp)	83 kW (111 hp)

* Ratings shown for use with standard right-hand rotation engines.
The maximum allowable rated engine speed is 4000 rpm.



Specifications subject to change without prior notice in the interest of continual product improvement.
Contact your local Twin Disc representative for engineering specifications, Survey Society Approvals and Classifications.

Scan QR code to see Twin Disc's entire Marine product line.



OPTIONS

SAE J617 housing no. 3

SAE J617 housing no. 4

Borg Warner housing

Flexible coupling for 11.5" flywheel (SAE J620 size 290)

Electric control valve (12 VDC or 24 VDC)

Control cable bracket

Mechanical trolling valve

Oil cooler

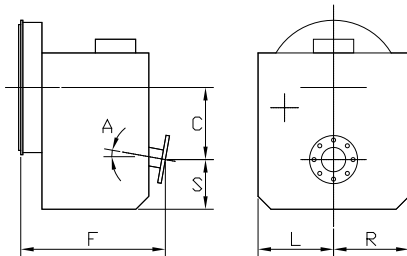
Companion flange

Dry weight with standard equipment: **54 kg**

For nearly a century, we've been making boats perform better and more reliably. From system-design consultation to application development to in-service support, Twin Disc provides fully integrated propulsion solutions that will optimize your craft's performance, reliability and safety over the years. Bring Twin Disc aboard early in the development process, and you'll enjoy a lifetime of enhanced operating value.

TRANSMISSIONS • ELECTRONIC CONTROLS • EXPRESS JOYSTICK SYSTEM® • SAILDRIVES • EXPRESS POSITIONING® • ARNESON SURFACE DRIVES • MARINE CONTROL DRIVES • ROLLA PROPELLERS • BOW & STERN THRUSTERS • STEERING SYSTEMS • RUDDERS • TRIM TABS

MG-5055A



C	155 mm (6.10")
S	108 mm (4.25")
F	267 mm (10.51")
L	193 mm (7.60")
R	193 mm (7.60")
A	10°

Twin Disc, Incorporated reminds users of these products that their safe operation depends on use in compliance with engineering information provided in our catalog. Users are also reminded that safe operation depends on proper installation, operation and routine maintenance and inspection under prevailing conditions. It is the responsibility of users (and not Twin Disc, Incorporated) to provide and install guards or safety devices which may be required by recognized safety standards or by the Occupational Safety and Health Act of 1970 and its subsequent provisions.

United States of America • Australia • Belgium • Canada • China • India • Italy • Singapore • Switzerland



Twin Disc, Incorporated
Racine, Wisconsin 53403 USA
Phone +1-262-638-4000
Fax +1-262-638-4482
www.twindisc.com

TD-Bulletin-MG-5055A
© 2016, Twin Disc, Incorporated
Printed in the USA - 1/2016