

Maximum 354 kW (475 hp) @2800 RPM (PLEASURE CRAFT)

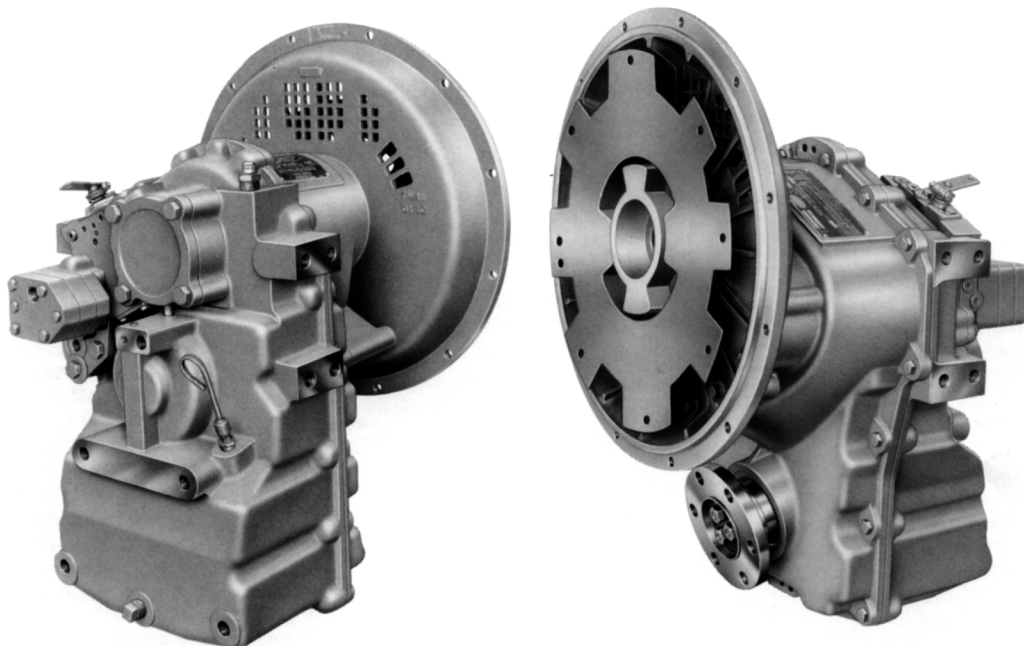
STANDARD EQUIPMENT**MG-5062IV**

Integral V-drive, cast iron housing

15° down angle on output flange

Mechanical control valve

Oil strainer

**INPUT RATINGS - KILOWATS (KW) (HORSEPOWER (HP))***For service classification definitions and important notes refer to www.twindisc.com, the Twin Disc Marine Product Guide or contact Twin Disc directly.

Reduction Ratios :1	Pleasure Craft @ 2800 RPM	Light Duty @ 2800 RPM	Intermediate Duty @ 2500 RPM	Medium Duty @ 2100 RPM	Continuous Duty @ 2100 RPM
1.19, 1.53, 1.83	354 kW (475 hp)	331 kW (444 hp)	239 kW (320 hp)	157 kW (211 hp)	142 kW (190 hp)
2.07, 2.51	321 kW (430 hp)	300 kW (402 hp)			

* Ratings shown for use with standard right-hand rotation engines.

The maximum allowable rated engine speed is 3300 rpm (5500 rpm in high speed configuration).



Specifications subject to change without prior notice in the interest of continual product improvement.
Contact your local Twin Disc representative for engineering specifications, Survey Society Approvals
and Classifications.

Scan QR code to see Twin Disc's entire Marine product line.



OPTIONS

SAE J617 no. 2 to SAE J617 no. 1 housing adaptor

SAE J617 housing no. 2

SAE J617 housing no. 3

Flexible coupling for 14" flywheel (SAE J620 size 355)

Flexible coupling for 11½" flywheel (SAE J620 size 290)

Input flange for freestanding installation

High speed configuration (3300-5500 rpm)

Electric control valve (12VDC or 24 VDC)

Mechanical trolling valve

Oil cooler

Companion flange/ bolts set

Monitoring devices to customer's specification

Mounting brackets

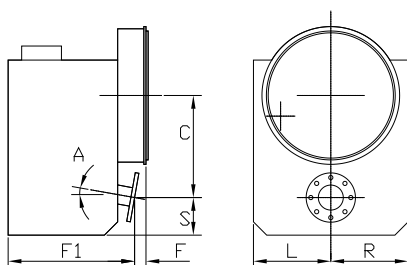
Live PTO

SAE J744 size 82-2, 16-4 (SAE "A", 2-bolt) – max. 35 Nm

SAE J744 size 101-2/4, 22-4 (SAE "B", 2/4-bolt) – max. 197 Nm

Dry weight incl. SAE #3 housing and SAE 290 flexible coupling: **142 kg**

MG-5062IV



C	331 mm (13.03")
S	101 mm (3.97")
F	102 mm (4.00")
F1	328 mm (12.92")
L	213 mm (8.40")
R	156 mm (6.15")
A	15°

Twin Disc, Incorporated reminds users of these products that their safe operation depends on use in compliance with engineering information provided in our catalog. Users are also reminded that safe operation depends on proper installation, operation and routine maintenance and inspection under prevailing conditions. It is the responsibility of users (and not Twin Disc, Incorporated) to provide and install guards or safety devices which may be required by recognized safety standards or by the Occupational Safety and Health Act of 1970 and its subsequent provisions.

United States of America • Australia • Belgium • Canada • China • India • Italy • Singapore • Switzerland

For nearly a century, we've been making boats perform better and more reliably. From system-design consultation to application development to in-service support, Twin Disc provides fully integrated propulsion solutions that will optimize your craft's performance, reliability and safety over the years. Bring Twin Disc aboard early in the development process, and you'll enjoy a lifetime of enhanced operating value.

TRANSMISSIONS • ELECTRONIC CONTROLS • EXPRESS JOYSTICK SYSTEM® • SAILDRIVES • EXPRESS POSITIONING® • ARNESON SURFACE DRIVES • MARINE CONTROL DRIVES • ROLLA PROPELLERS • BOW & STERN THRUSTERS • STEERING SYSTEMS • RUDDERS • TRIM TABS



Twin Disc, Incorporated
Racine, Wisconsin 53403 USA
Phone +1-262-638-4000
Fax +1-262-638-4482
www.twindisc.com

TD-Bulletin-MG-5062IV
© 2016, Twin Disc, Incorporated
Printed in the USA - 1/2016