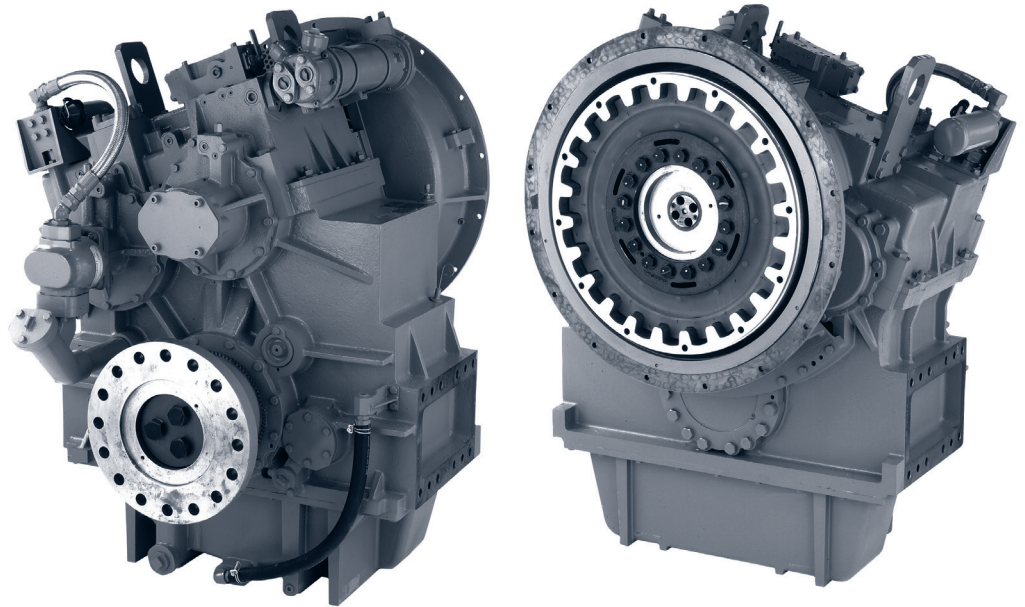


Maximum 1406 kW (1885 hp) @1800 RPM (CONTINUOUS DUTY)

**STANDARD EQUIPMENT****MG-5506**

Vertical offset, cast iron housing  
 Mechanical control valve  
 Oil strainer and oil filter  
 Oil cooler for raw water cooling  
 Companion flange/ bolts set

**INPUT RATINGS - KILOWATS (KW) (HORSEPOWER (HP))\***

For service classification definitions and important notes refer to [www.twindisc.com](http://www.twindisc.com), the Twin Disc Marine Product Guide or contact Twin Disc directly.

Reduction Ratios :1	Intermediate Duty		Medium Duty		Continuous Duty	
	@ 1600 RPM	@ 1800 RPM	@ 1600 RPM	@ 1800 RPM	@ 1600 RPM	@ 1800 RPM
4.03, 4.55 4.96, 5.44	1323 kW (1774 hp)	1489 kW (1998 hp)	1281 kW (1718 hp)	1441 kW (1932 hp)	1249 kW (1675 hp)	1406 kW (1885 hp)
6.00	1197 kW (1605 hp)	1347 kW (1806 hp)	1159 kW (1554 hp)	1304 kW (1749 hp)	1130 kW (1515 hp)	1279 kW (1715 hp)

\* Ratings shown for use with standard right-hand rotation engines.  
 The maximum allowable rated engine speed is 2000 rpm.



Specifications subject to change without prior notice in the interest of continual product improvement.  
 Contact your local Twin Disc representative for engineering specifications, Survey Society Approvals  
 and Classifications.

Scan QR code to see Twin Disc's entire Marine product line.



## OPTIONS

SAE J617 housing no.0

SAE J617 housing no.00

Flexible coupling for 18" flywheel (SAE J620 size 460)

Flexible coupling for 21" flywheel (SAE J620 size 530)

Input hub for freestanding installation

Electric GP-valve with manual override

EC050 Profile module – interface for engagement signals

EC050 E-Troll module – interface for engagement & trolling signals

Harness with single point interface to Twin Disc EC300 control system

Oil cooler for fresh water cooling

Output shaft driven trailing pump

Monitoring devices to customer's specification

Mounting brackets

Live PTO

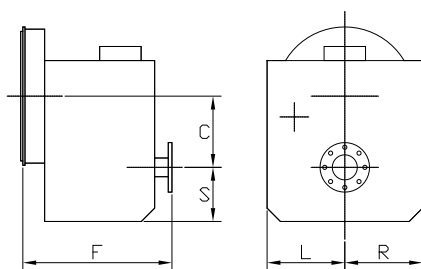
SAE J744 size 127-2/4, 32-4 (SAE "C", 2/4-bolt) – max. 592 Nm

Hydraulic clutchable pump mount PTO

SAE J744 size 127-2/4, 32-4 (SAE "C", 2/4-bolt) – max. 592 Nm

Dry weight incl. SAE #0 housing and SAE 460 flexible coupling: **2200 kg**

## MG-5506



C	490 mm (19.29")
S	490 mm (19.29")
F	995 mm (39.17")
L	510 mm (20.08")
R	510 mm (20.08")

For nearly a century, we've been making boats perform better and more reliably. From system-design consultation to application development to in-service support, Twin Disc provides fully integrated propulsion solutions that will optimize your craft's performance, reliability and safety over the years. Bring Twin Disc aboard early in the development process, and you'll enjoy a lifetime of enhanced operating value.

TRANSMISSIONS • ELECTRONIC CONTROLS • EXPRESS JOYSTICK SYSTEM® • SAILDRIVES • EXPRESS POSITIONING® • ARNESON SURFACE DRIVES • MARINE CONTROL DRIVES • ROLLA PROPELLERS • BOW & STERN THRUSTERS • STEERING SYSTEMS • RUDDERS • TRIM TABS



Twin Disc, Incorporated  
Racine, Wisconsin 53403 USA  
Phone +1-262-638-4000  
Fax +1-262-638-4482  
[www.twindisc.com](http://www.twindisc.com)

Twin Disc, Incorporated reminds users of these products that their safe operation depends on use in compliance with engineering information provided in our catalog. Users are also reminded that safe operation depends on proper installation, operation and routine maintenance and inspection under prevailing conditions. It is the responsibility of users (and not Twin Disc, Incorporated) to provide and install guards or safety devices which may be required by recognized safety standards or by the Occupational Safety and Health Act of 1970 and its subsequent provisions.

United States of America • Australia • Belgium • Canada • China • India • Italy • Singapore • Switzerland

*TD-Bulletin-MG-5506*  
© 2016, Twin Disc, Incorporated  
Printed in the USA - 1/2016