

Maximum 2856 kW (3830 hp) @2100 RPM (PLEASURE CRAFT)

**STANDARD EQUIPMENT**

**MG-61242SC**

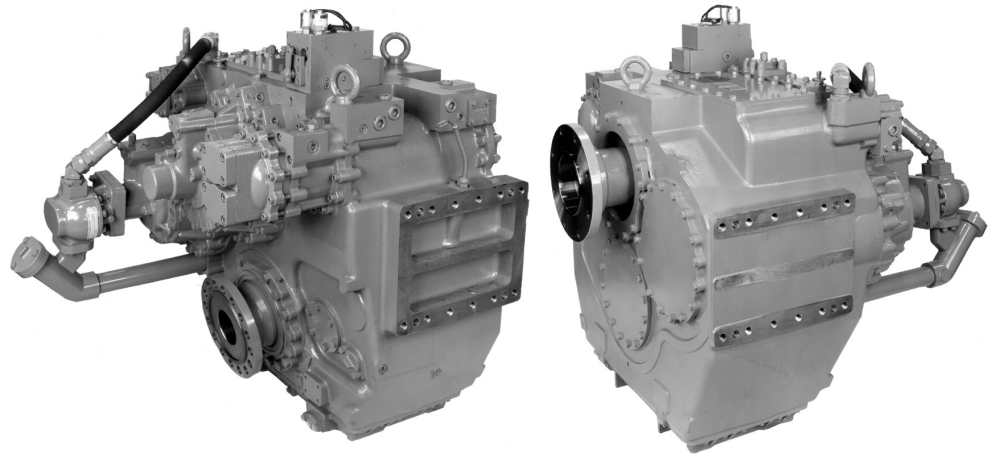
- Vertical offset, aluminum housing
- Electric GP-valve with manual override
- EC050 Profile module
  - interface for engagement signals
- Integral oil cooler for raw water cooling
- Oil strainer and oil filter

**MG-61242A**

- Vertical offset, aluminum housing
- 10° down angle on output shaft
- Electric GP-valve with manual override
- EC050 Profile module
  - interface for engagement signals
- Integral oil cooler for raw water cooling
- Oil strainer and oil filter

**MG-61242RV**

- Remote V-drive, aluminum housing
- 10° down angle on output shaft
- Input flange
- Electric GP-valve with manual override
- EC050 Profile module - interface for engagement signals
- Integral oil cooler for raw water cooling
- Oil strainer and oil filter



**INPUT RATINGS - KILOWATS (KW) (HORSEPOWER (HP))\***

For service classification definitions and important notes refer to [www.twindisc.com](http://www.twindisc.com), the Twin Disc Marine Product Guide or contact Twin Disc directly.

**MG-61242SC**

Reduction Ratios :1	Pleasure Craft @ 2100 RPM	Light Duty @ 2100 RPM	Intermediate Duty @ 1800 RPM	Medium Duty @ 1800 RPM	Continuous Duty @ 1800 RPM
1.16	2856 kW (3830 hp)	2709 kW (3633 hp)	2251 kW (3019 hp)	1973 kW (2646 hp)	1875 kW (2514 hp)
1.52					1760 kW (2360 hp)
2.08		2634 kW (3532 hp)	2205 kW (2957 hp)		
2.47	2745 kW (3681 hp)	2559 kW (3432 hp)	2193 kW (2941 hp)	1902 kW (2551 hp)	
2.96					

**MG-61242A & MG-61242RV**

Reduction Ratios :1	Pleasure Craft @ 2100 RPM	Light Duty @ 2100 RPM	Intermediate Duty @ 1800 RPM	Medium Duty @ 1800 RPM	Continuous Duty @ 1800 RPM
1.42	2856 kW (3830 hp)	2743 kW (3678 hp)	2338 kW (3135 hp)	1973 kW (2646 hp)	1858 kW (2492 hp)
2.07		2634 kW (3532 hp)	2193 kW (2941 hp)	1896 kW (2543 hp)	1782 kW (2390 hp)
2.44	2722 kW (3650 hp)	2559 kW (3432 hp)			1760 kW (2360 hp)
2.93					



\* Ratings shown for use with standard right-hand rotation engines. The maximum allowable rated engine speed is 2100 rpm.

Specifications subject to change without prior notice in the interest of continual product improvement. Contact your local Twin Disc representative for engineering specifications, Survey Society Approvals and Classifications.

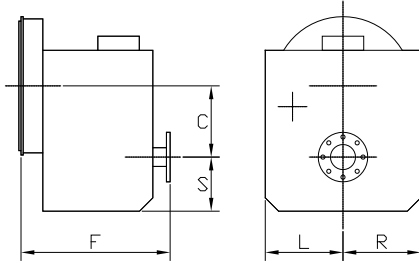
Scan QR code to see Twin Disc's entire Marine product line.



## OPTIONS

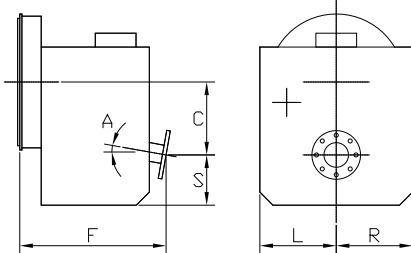
	MG-61242SC	MG-61242A	MG-61242RV
SAE J617 housing no. 00	X	X	
Flexible coupling for 21" flywheel (SAE J620 size 530)	X	X	
Input flange for freestanding installation	X	X	standard
EC050 E-Troll module			
- interface for engagement & trolling signals	X	X	X
Harness with single point interface			
to Twin Disc EC300 control system	X	X	X
Output shaft driven trailing pump	X	X	X
Companion flange/ bolts set	X	X	X
Monitoring devices to customer's specification	X	X	X
Mounting brackets	X	X	X
Live PTO			
SAE J744 size 127-4, 32-4 (SAE "C", 4-bolt)			
- max. 600 Nm	X	X	X
Hydraulic Clutchable PTO			
SAE J744 size 127-4, 32-4 (SAE "C", 4-bolt)			
- max. 600 Nm	X	X	X
Dry weight incl. SAE #00 housing and SAE 530 flexible coupling	1050 kg	1105 kg	1125 kg

### MG-61242SC



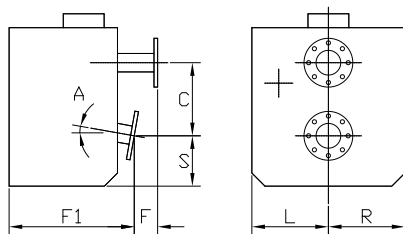
C	340 mm (13.39")
S	309 mm (12.17")
F	757 mm (29.80")
L	500 mm (19.69")
R	500 mm (19.69")

### MG-61242A



C	445 mm (17.52")
S	241 mm (9.49")
F	771 mm (30.35")
L	500 mm (19.69")
R	500 mm (19.69")
A	10°

### MG-61242RV



C	445 mm (17.52")
S	241 mm (9.49")
F	288 mm (11.34")
F1	827 mm (32.56")
L	500 mm (19.69")
R	500 mm (19.69")
A	10°

Twin Disc, Incorporated reminds users of these products that their safe operation depends on use in compliance with engineering information provided in our catalog. Users are also reminded that safe operation depends on proper installation, operation and routine maintenance and inspection under prevailing conditions. It is the responsibility of users (and not Twin Disc, Incorporated) to provide and install guards or safety devices which may be required by recognized safety standards or by the Occupational Safety and Health Act of 1970 and its subsequent provisions.

United States of America • Australia • Belgium • Canada • China • India • Italy • Singapore • Switzerland

For nearly a century, we've been making boats perform better and more reliably. From system-design consultation to application development to in-service support, Twin Disc provides fully integrated propulsion solutions that will optimize your craft's performance, reliability and safety over the years. Bring Twin Disc aboard early in the development process, and you'll enjoy a lifetime of enhanced operating value.

TRANSMISSIONS • ELECTRONIC CONTROLS • EXPRESS JOYSTICK SYSTEM® • SAILDRIVES • EXPRESS POSITIONING® • ARNISON SURFACE DRIVES • MARINE CONTROL DRIVES • ROLLA PROPELLERS • BOW & STERN THRUSTERS • STEERING SYSTEMS • RUDDERS • TRIM TABS



Twin Disc, Incorporated  
Racine, Wisconsin 53403 USA  
Phone +1-262-638-4000  
Fax +1-262-638-4482  
www.twindisc.com

*TD-Bulletin-MG-61242\_Series*  
© 2016, Twin Disc, Incorporated  
Printed in the USA - 1/2016