

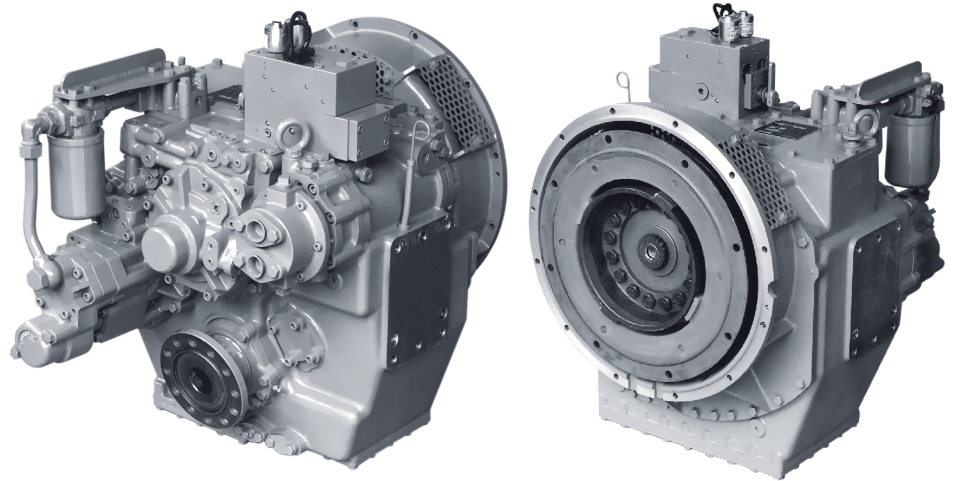
Maximum 1104 kW (1480 hp) @2300 RPM (PLEASURE CRAFT)

**STANDARD EQUIPMENT****MG-6449A**

Vertical offset, aluminum housing  
 10° down angle on output shaft  
 Electric GP-valve with manual override  
 EC050 Profile module  
 – interface for engagement signals  
 Oil strainer and oil filter

**MG-6449RV**

Remote V-drive, aluminum housing  
 10° down angle on output shaft  
 Input flange  
 Electric GP-valve with manual override  
 EC050 Profile module  
 – interface for engagement signals  
 Oil strainer and oil filter

**INPUT RATINGS - KILOWATS (KW) (HORSEPOWER (HP))\***

For service classification definitions and important notes refer to [www.twindisc.com](http://www.twindisc.com), the Twin Disc Marine Product Guide or contact Twin Disc directly.

Reduction Ratios :1	Pleasure Craft @ 2300 RPM	Light Duty @ 2300 RPM	Intermediate Duty @ 2100 RPM	Medium Duty @ 1800 RPM	Continuous Duty @ 1800 RPM
1.51 1.73	1104 kW (1480 hp)	1072 kW (1437 hp)	897 kW (1203 hp)	741 kW (994 hp)	695 kW (932 hp)
2.07		974 kW (1306 hp)	746 kW (1000 hp)	617 kW (827 hp)	574 kW (770 hp)
2.44		861 kW (1154 hp)	647 kW (868 hp)	537 kW (720 hp)	502 kW (673 hp)
2.95	782 kW (1050 hp)	696 kW (933 hp)	577 kW (774 hp)	489 kW (656 hp)	448 kW (601 hp)

\* Ratings shown for use with standard right-hand rotation engines.  
 The maximum allowable rated engine speed is 2500 rpm.



Specifications subject to change without prior notice in the interest of continual product improvement.  
 Contact your local Twin Disc representative for engineering specifications, Survey Society Approvals  
 and Classifications.

Scan QR code to see Twin Disc's entire Marine product line.



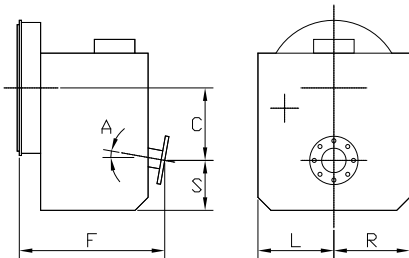
## OPTIONS

	MG-6449A	MG-6449RV
SAE J617 housing no. 1	X	
SAE J617 housing no. 0	X	
Flexible coupling for 14" flywheel (SAE J620 size 355)	X	
Flexible coupling for 18" flywheel (SAE J620 size 460)	X	
Input flange for freestanding installation	X	standard
EC050 E-Troll module - interface for engagement & trolling signals	X	X
Harness with single point interface to Twin Disc EC300 control system	X	X
Output shaft driven trailing pump	X	X
Companion flange/ bolts set	X	X
Monitoring devices to customer's specification	X	X
Mounting brackets	X	X
Live PTO		
SAE J744 size 127-4, 32-4 (SAE "C", 4-bolt) - max. 600 Nm	X	X
Hydraulic Clutchable PTO		
SAE J744 size 127-4, 32-4 (SAE "C", 4-bolt) - max. 600 Nm	X	X
Dry weight incl. SAE #1 housing and SAE 355 flexible coupling	344 kg	355 kg

For nearly a century, we've been making boats perform better and more reliably. From system-design consultation to application development to in-service support, Twin Disc provides fully integrated propulsion solutions that will optimize your craft's performance, reliability and safety over the years. Bring Twin Disc aboard early in the development process, and you'll enjoy a lifetime of enhanced operating value.

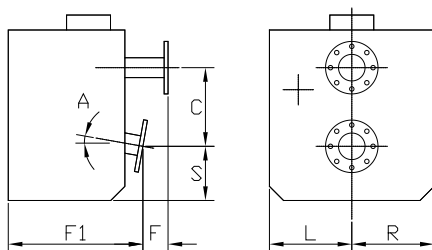
TRANSMISSIONS • ELECTRONIC CONTROLS • EXPRESS JOYSTICK SYSTEM® • SAILDRIVES • EXPRESS POSITIONING® • ARNESON SURFACE DRIVES • MARINE CONTROL DRIVES • ROLLA PROPELLERS • BOW & STERN THRUSTERS • STEERING SYSTEMS • RUDDERS • TRIM TABS

### MG-6449A



C	275 mm (10.83")
S	125 mm (4.92")
F	529 mm (20.83")
L	305 mm (12.01")
R	305 mm (12.01")
A	10°

### MG-6449RV



C	275 mm (10.83")
S	164 mm (6.44")
F	161 mm (6.32")
F1	516 mm (20.32")
L	305 mm (12.01")
R	305 mm (12.01")
A	10°

Twin Disc, Incorporated reminds users of these products that their safe operation depends on use in compliance with engineering information provided in our catalog. Users are also reminded that safe operation depends on proper installation, operation and routine maintenance and inspection under prevailing conditions. It is the responsibility of users (and not Twin Disc, Incorporated) to provide and install guards or safety devices which may be required by recognized safety standards or by the Occupational Safety and Health Act of 1970 and its subsequent provisions.

United States of America • Australia • Belgium • Canada • China • India • Italy • Singapore • Switzerland



Twin Disc, Incorporated  
Racine, Wisconsin 53403 USA  
Phone +1-262-638-4000  
Fax +1-262-638-4482  
www.twindisc.com

TD-Bulletin-MG-6449\_Series  
© 2016, Twin Disc, Incorporated  
Printed in the USA - 1/2016