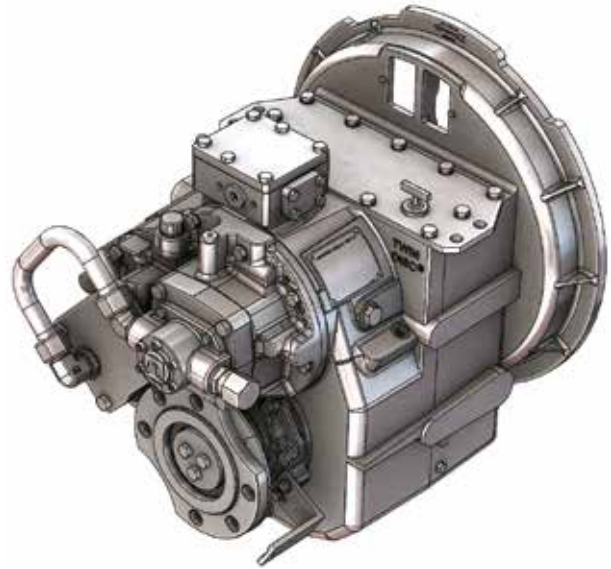


## MGE-5126SC

### HYBRID-READY MARINE TRANSMISSION

Twin Disc has taken its field-proven marine transmissions and created the MGE Series of gearboxes. This design provides power from the motor immediately in both clockwise and counter-clockwise directions. All units are equipped with a bi-directional oil pump to provide lubrication no matter the direction of shaft rotation, making these units a perfect fit for serial hybrid and diesel-electric applications or any application requiring a direct power response with a ratio reduction.



### FEATURES & BENEFITS

- Vertical offset, lightweight aluminum alloy housing
- Bi-directional lubrication pump
- Simplified design without a clutch
- Same installation envelope as standard marine transmission
- Same ratios as MGX-5114SC
- Metric design (except for some power transmitting and plumbing components)
- Marine survey society type approvals and unit certification available

### STANDARD EQUIPMENT

- SAE J617 housing no. 1
- Input flange for freestanding installation
- Oil strainer mounted

### INPUT RATINGS

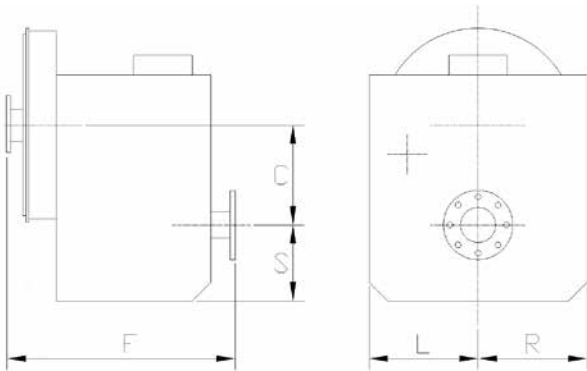
Reduction Ratios :1	Pleasure Craft @ 2300 RPM	Light Duty @ 2300 RPM	Intermediate Duty @ 2100 RPM	Medium Duty @ 1800 RPM	Continuous Duty @ 1800 RPM
1.02, 1.12, 1.50 1.74, 2.04	673 kW (902 hp)	629 kW (843 hp)	504 kW (676 hp)	394 kW (528 hp)	358 kW (480 hp)
2.54			466 kW (625 hp)		
3.00	578 kW (775 hp)	540 kW (724 hp)	451 kW (605 hp)	361 kW (484 hp)	328 kW (440 hp)

For service classification definitions and important notes refer to the Twin Disc Marine Product Guide or contact Twin Disc directly.  
The maximum allowable rated engine/motor speed is 3000 rpm.

## OPTIONAL EQUIPMENT

- Adaptations for close coupled installation
- Companion flange/bolts set
- Mounted heat exchanger
- Mounting brackets
- Monitoring devices to customer's specification

## BASIC DIMENSIONS & WEIGHT



C	190 mm (7.47 in)
S	161 mm (6.33 in)
F	548 mm (21.58 in)
L	279 mm (11.00 in)
R	191 mm (7.50 in)
Weight*	170 kg

\* Estimated dry weight with SAE no. 1 input housing & GWB 587.42 input hub.

Since 1918, we've been putting horsepower to work by designing, engineering and manufacturing rugged-duty industrial products. Our products and our reputation are bolted to the most renowned engine manufacturers and equipment OEMs in the world. Our mission is to make boats, machines and off-highway vehicles more productive, more durable, more operator-friendly, and more cost-effective. From design and installation consultation through after-sale support, Twin Disc and its distributors are committed to your business. No one knows more about managing horsepower in more ways than Twin Disc.

TRANSMISSIONS

ELECTRONIC CONTROLS

EXPRESS JOYSTICK SYSTEM®

SAILDIVES

EXPRESS POSITIONING®

ARNESON® SURFACE DRIVES

MARINE CONTROL DRIVES

ROLLA™ PROPELLERS

THRUSTERS

VETH PROPULSION SYSTEMS

STEERING SYSTEMS

RUDDERS

TRIM TABS

BLUEDRIVES

PUMP DRIVES

PTOS

Specifications subject to change without prior notice in the interest of continual product improvement. Contact your local Twin Disc representative for engineering specifications, Survey Society Approvals and Classifications.

Twin Disc, Incorporated reminds users of these products that their safe operation depends on use in compliance with engineering information provided in our catalog. Users are also reminded that safe operation depends on proper installation, operation and routine maintenance and inspection under prevailing conditions. It is the responsibility of users (and not Twin Disc, Incorporated) to provide and install guards or safety devices which may be required by recognized safety standards or by the Occupational Safety and Health Act of 1970 and its subsequent provisions.

USA • AUSTRALIA • BELGIUM • CHINA • INDIA • ITALY • NETHERLANDS • SINGAPORE • SWITZERLAND



Twin Disc, Incorporated  
Racine, Wisconsin 53403 USA  
Phone +1-262-638-4000  
Fax +1-262-638-4482  
www.twindisc.com

2011\_Bulletin\_MGE-5126SC  
© 2020, Twin Disc, Incorporated  
Printed in the USA