

**MGX-516**

**MAXIMUM 447 KW (600 HP)  
@ 1800 RPM (CONTINUOUS DUTY)**

**STANDARD EQUIPMENT**

- Vertical offset, cast iron housing
- SAE J617 housing no. 1
- Electric GP-valve with manual override
- EC600PC profile module – interface for engagement signals
- Oil strainer and oil filter



**INPUT RATINGS**

Reduction Ratios :1	Intermediate Duty		Medium Duty		Continuous Duty	
	@ 1800 RPM	@ 2100 RPM	@ 1600 RPM	@ 1800 RPM	@ 1600 RPM	@ 1800 RPM
3.06, 3.50 4.04, 4.52 5.05	530 kW (711 hp)	573 kW (768 hp)	397 kW (532 hp)	447 kW (600 hp)	397 kW (532 hp)	447 kW (600 hp)
	518 kW (695 hp)	549 kW (736 hp)				
	494 kW (662 hp)	521 kW (699 hp)				
	484 kW (649 hp)	510 kW (684 hp)				
	468 kW (628 hp)	492 kW (660 hp)				
6.00	419 kW (562 hp)	470 kW (630 hp)	365 kW (489 hp)	406 kW (544 hp)	365 kW (489 hp)	406 kW (544 hp)

*For service classification definitions and important notes refer to the Twin Disc Marine Product Guide or contact Twin Disc directly. Ratings shown for use with standard right hand rotation engines. The maximum allowable rated engine speed is 2500 rpm.*

**EC600PC ELECTRONIC PROPULSION CONTROL SYSTEM**

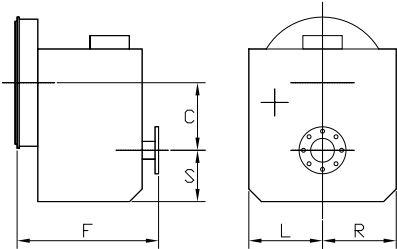
- Optional equipment: display and joystick



## OPTIONAL EQUIPMENT

- Adapter from SAE J617 housing no. 1 to SAE J617 housing no. 0
- Flexible coupling for 14" flywheel (SAE J620 size 355)
- Input hub for freestanding installation
- Mechanical control valve
- EC600PC e-troll module and propulsion control system
- Oil cooler with thermostatic bypass valve
- Companion flange/bolts set
- Monitoring devices to customer's specification
- Mounting brackets
- Live PTO
  - SAE J744 size 101-2/2, 25-4 (SAE "B-B", 2-bolt) – max. 337 Nm
  - SAE J744 size 127-2/4, 32-4 (SAE "C", 2/4-bolt) – max. 592 Nm
  - SAE J744 size 127-2/4, 38-4 (SAE "C-C", 2/4-bolt) – max. 1187 Nm
- Hydraulic clutchable pump mount PTO
  - SAE J744 size 127-2/4, 32-4 (SAE "C", 2/4-bolt) – max. 592 Nm
  - SAE J744 size 127-2/4, 38-4 (SAE "C-C", 2/4-bolt) – max. 1186 Nm
- Dry weight including SAE no. 1 housing and SAE 355 flexible coupling: 720 kg

## MGX-516



C	338 mm (13.29")
S	324 mm (12.77")
F	523 mm (20.59")
L	356 mm (14.00")
R	356 mm (14.00")

Since 1918, we've been putting horsepower to work by designing, engineering and manufacturing rugged-duty industrial products. Our products and our reputation are bolted to the most renowned engine manufacturers and equipment OEMs in the world. Our mission is to make boats, machines and off-highway vehicles more productive, more durable, more operator-friendly, and more cost-effective. From design and installation consultation through after-sale support, Twin Disc and its distributors are committed to your business. No one knows more about managing horsepower in more ways than Twin Disc.

### TRANSMISSIONS

### ELECTRONIC CONTROLS

### EXPRESS JOYSTICK SYSTEM®

### SAILDRIVES

### EXPRESS POSITIONING®

### ARNESON® SURFACE DRIVES

### MARINE CONTROL DRIVES

### ROLLA™ PROPELLERS

### THRUSTERS

### VETH PROPULSION SYSTEMS

### STEERING SYSTEMS

### RUDDERS

### TRIM TABS

### PUMP DRIVES

### PTOS

Twin Disc, Incorporated reminds users of these products that their safe operation depends on use in compliance with engineering information provided in our product guides, installation/assembly drawings and/or manuals. Users are also reminded that safe operation depends on proper installation, operation and routine maintenance and inspection under prevailing conditions. It is the responsibility of users (and not Twin Disc, Incorporated) to provide and install guards or safety devices which may be required by recognized safety standards or by the Occupational Safety and Health Act of 1970 and its subsequent provisions.

USA • AUSTRALIA • BELGIUM • CHINA • INDIA • ITALY • NETHERLANDS • SINGAPORE • SWITZERLAND



Twin Disc, Incorporated  
 Racine, Wisconsin 53403 USA  
 Phone +1-262-638-4000  
 Fax +1-262-638-4482  
[www.twindisc.com](http://www.twindisc.com)

2102\_Bulletin\_MGX-516  
 © 2021, Twin Disc, Incorporated  
 Printed in the USA