

Maximum 1104 kW (1480 hp) @2300 RPM (PLEASURE CRAFT)

STANDARD EQUIPMENT**MGX-5204SC**

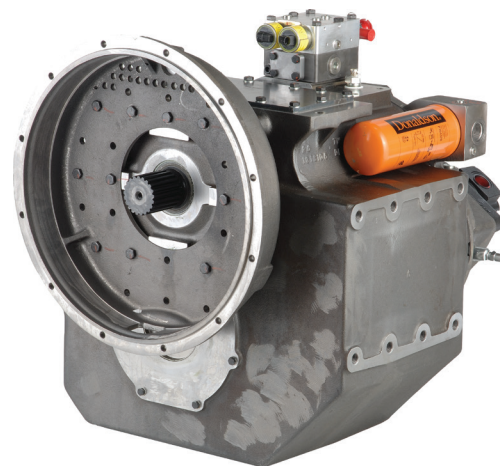
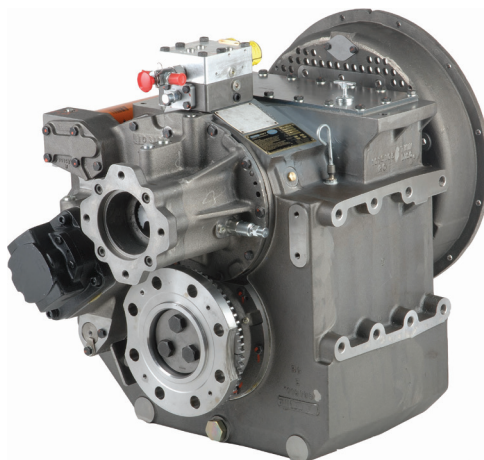
Vertical offset, aluminum housing

Electric GP-valve with manual override

EC050 Profile module

– interface for engagement signals

Oil strainer and oil filter



QUICKSHIFT®
You've got to feel it to believe it.

INPUT RATINGS - KILOWATS (KW) (HORSEPOWER (HP))*For service classification definitions and important notes refer to www.twindisc.com, the Twin Disc Marine Product Guide or contact Twin Disc directly.

Reduction Ratios :1	Pleasure Craft @ 2300 RPM	Light Duty @ 2300 RPM	Intermediate Duty @ 2100 RPM	Medium Duty @ 1800 RPM	Continuous Duty @ 1800 RPM
1.17, 1.33, 1.53 1.76, 2.03, 2.48 2.92	1104 kW (1480 hp)	979 kW (1313 hp)	858 kW (1151 hp)	715 kW (960 hp)	716 kW (960 hp)
3.48	1081 kW (1450 hp)	837 kW (1122 hp)	720 kW (966 hp)	600 kW (805 hp)	600 kW (805 hp)

* Ratings shown for use with standard right-hand rotation engines.

The maximum allowable rated engine speed is 2750 rpm (2500 rpm for ration 1.17:1).



Specifications subject to change without prior notice in the interest of continual product improvement.
 Contact your local Twin Disc representative for engineering specifications, Survey Society Approvals
 and Classifications.

Scan QR code to see Twin Disc's entire Marine product line.



OPTIONS

SAE J617 housing no.1

SAE J617 housing no.0

Flexible coupling for 14" flywheel (SAE J620 size 355)

Flexible coupling for 18" flywheel (SAE J620 size 460)

Input hub for freestanding installation

Mechanical control valve

EC050 E-Troll module – interface for engagement & trolling signals

Harness with single point interface to Twin Disc EC300 control system

Oil cooler for raw and fresh water cooling

Companion flange/ bolts set

Monitoring devices to customer's specification

Mounting brackets

Live PTO

SAE J744 size 127-2/4, 32-4 (SAE "C", 2/4-bolt) – max. 592 Nm

SAE J744 size 127-2/4, 38-4 (SAE "C-C", 2/4-bolt) – max. 1187 Nm

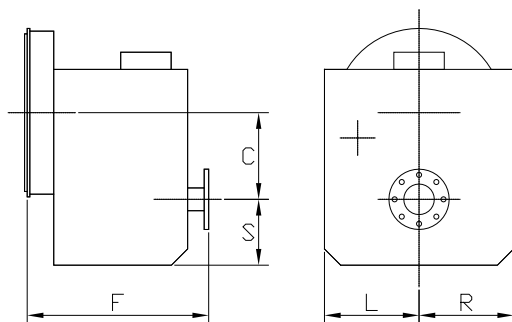
Hydraulic Clutchable pump mount PTO

SAE J744 size 127-2/4, 32-4 (SAE "C", 2/4-bolt) – max. 592 Nm

SAE J744 size 127-2/4, 38-4 (SAE "C-C", 2/4-bolt) – max. 1186 Nm

Dry weight incl. SAE #1 housing and SAE 355 flexible coupling: **580 kg**

MGX-5204SC



C	248 mm (9.75")
S	222 mm (8.75")
F	595 mm (23.41")
L	375 mm (14.75")
R	267 mm (10.50")

Twin Disc, Incorporated reminds users of these products that their safe operation depends on use in compliance with engineering information provided in our catalog. Users are also reminded that safe operation depends on proper installation, operation and routine maintenance and inspection under prevailing conditions. It is the responsibility of users (and not Twin Disc, Incorporated) to provide and install guards or safety devices which may be required by recognized safety standards or by the Occupational Safety and Health Act of 1970 and its subsequent provisions.

United States of America • Australia • Belgium • Canada • China • India • Italy • Singapore • Switzerland

For nearly a century, we've been making boats perform better and more reliably. From system-design consultation to application development to in-service support, Twin Disc provides fully integrated propulsion solutions that will optimize your craft's performance, reliability and safety over the years. Bring Twin Disc aboard early in the development process, and you'll enjoy a lifetime of enhanced operating value.

TRANSMISSIONS • ELECTRONIC CONTROLS • EXPRESS JOYSTICK SYSTEM® • SAILDRIVES • EXPRESS POSITIONING® • ARNESON SURFACE DRIVES • MARINE CONTROL DRIVES • ROLLA PROPELLERS • BOW & STERN THRUSTERS • STEERING SYSTEMS • RUDDERS • TRIM TABS



Twin Disc, Incorporated
Racine, Wisconsin 53403 USA
Phone +1-262-638-4000
Fax +1-262-638-4482
www.twindisc.com

TD-Bulletin-MGX-5204SC
© 2016, Twin Disc, Incorporated
Printed in the USA - 2/2016