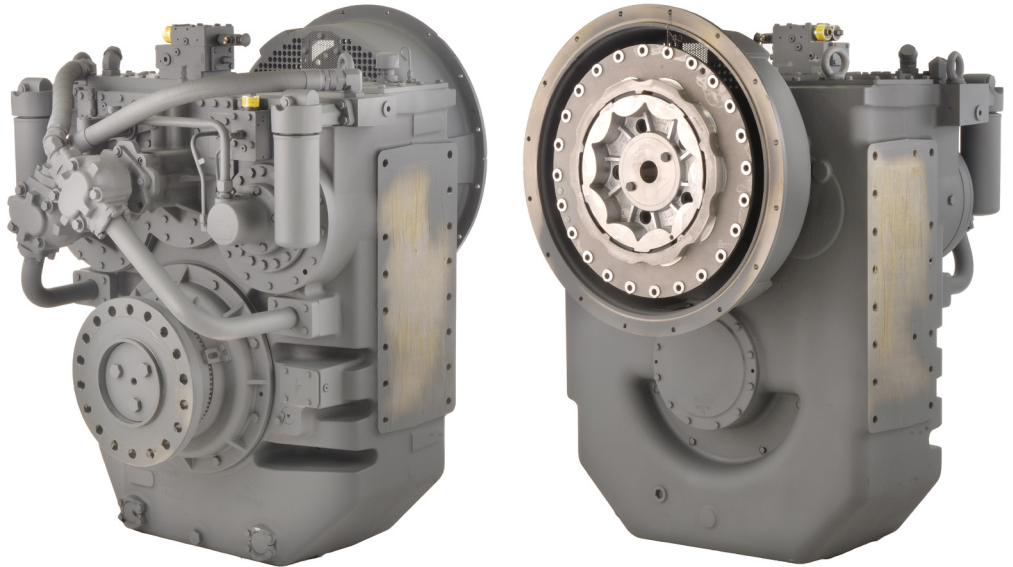


Maximum 1760 kW (2360 hp) @1800 RPM (CONTINUOUS DUTY)

STANDARD EQUIPMENT

MGX-5600

- Vertical offset, cast iron housing
- Electric GP-valve with manual override
- EC050 Profile module
 - interface for engagement signals
- Mounted oil cooler for raw
 - or fresh water cooling
- Oil strainer and oil filter
- Companion flange/bolt set



INPUT RATINGS - KILOWATTS (KW) (HORSEPOWER (HP))*

For service classification definitions and important notes refer to www.twindisc.com, the Twin Disc Marine Product Guide or contact Twin Disc directly.

Reduction Ratios :1	Intermediate Duty		Medium Duty		Continuous Duty	
	@ 1800 RPM	@ 2100 RPM	@ 1600 RPM	@ 1800 RPM	@ 1600 RPM	@ 1800 RPM
2.53, 2.98 3.51, 4.03	1805 kW (2421 hp)	2105 kW (2823 hp)	1598 kW (2143 hp)	1760 kW (2360 hp)	1575 kW (2112 hp)	1760 kW (2360 hp)
4.63, 5.04		2095 kW (2809 hp)				
5.76	1760 kW (2360 hp)	1770 kW (2374 hp)	1566 kW (2100 hp)	1737 kW (2329 hp)	1566 kW (2100 hp)	1737 kW (2329 hp)
6.04	1502 kW (2014 hp)	1717 kW (2302 hp)	1309 kW (1755 hp)	1451 kW (1946 hp)	1271 kW (1704 hp)	1410 kW (1891 hp)

* Ratings shown for use with standard right-hand rotation engines.
The maximum allowable rated engine speed is 2100 rpm.



Specifications subject to change without prior notice in the interest of continual product improvement. Contact your local Twin Disc representative for engineering specifications, Survey Society Approvals and Classifications.

Scan QR code to see Twin Disc's entire Marine product line.



OPTIONS

SAE J617 housing no.0

SAE J617 housing no.00

Flexible coupling for 18" flywheel (SAE J620 size 460)

Flexible coupling for 21" flywheel (SAE J620 size 530)

Input hub for freestanding installation

Hydraulically operated internal shaft brake

Mechanical control valve

EC050 E-Troll module – interface for engagement & trolling signals

Harness with single point interface to Twin Disc EC300 control system

Output shaft driven trailing pump

Special companion flange/bolts set for shaft brake application

Monitoring devices to customer's specification

Mounting brackets

Live PTO

SAE J744 size 127-2/4, 32-4 (SAE "C", 2/4-bolt) – max. 592 Nm

SAE J744 size 127-2/4, 38-4 (SAE "C-C", 2/4-bolt) – max. 1187 Nm

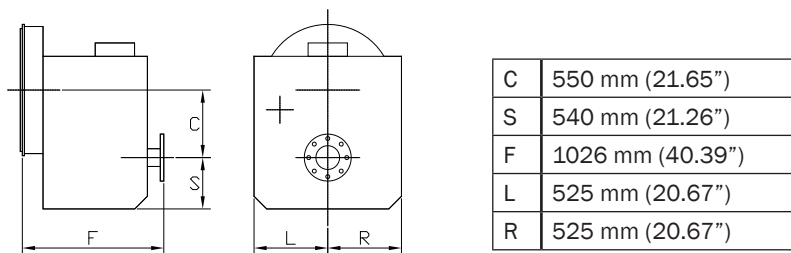
Hydraulic Clutchable pump mount PTO

SAE J744 size 127-2/4, 32-4 (SAE "C", 2/4-bolt) – max. 600 Nm

SAE J744 size 127-2/4, 38-4 (SAE "C-C", 2/4-bolt) – max. 1186 Nm

Dry weight incl. SAE #0 housing and SAE 460 flexible coupling: **3132 kg**

MGX-5600



Twin Disc, Incorporated reminds users of these products that their safe operation depends on use in compliance with engineering information provided in our catalog. Users are also reminded that safe operation depends on proper installation, operation and routine maintenance and inspection under prevailing conditions. It is the responsibility of users (and not Twin Disc, Incorporated) to provide and install guards or safety devices which may be required by recognized safety standards or by the Occupational Safety and Health Act of 1970 and its subsequent provisions.

United States of America • Australia • Belgium • Canada • China • India • Italy • Singapore • Switzerland

For nearly a century, we've been making boats perform better and more reliably. From system-design consultation to application development to in-service support, Twin Disc provides fully integrated propulsion solutions that will optimize your craft's performance, reliability and safety over the years. Bring Twin Disc aboard early in the development process, and you'll enjoy a lifetime of enhanced operating value.

TRANSMISSIONS • ELECTRONIC CONTROLS • EXPRESS JOYSTICK SYSTEM® • SAILDRIVES • EXPRESS POSITIONING® • ARNESON SURFACE DRIVES • MARINE CONTROL DRIVES • ROLLA PROPELLERS • BOW & STERN THRUSTERS • STEERING SYSTEMS • RUDDERS • TRIM TABS



Twin Disc, Incorporated
Racine, Wisconsin 53403 USA
Phone +1-262-638-4000
Fax +1-262-638-4482
www.twindisc.com

TD-Bulletin-MGX-5600
© 2016, Twin Disc, Incorporated
Printed in the USA - 2/2016