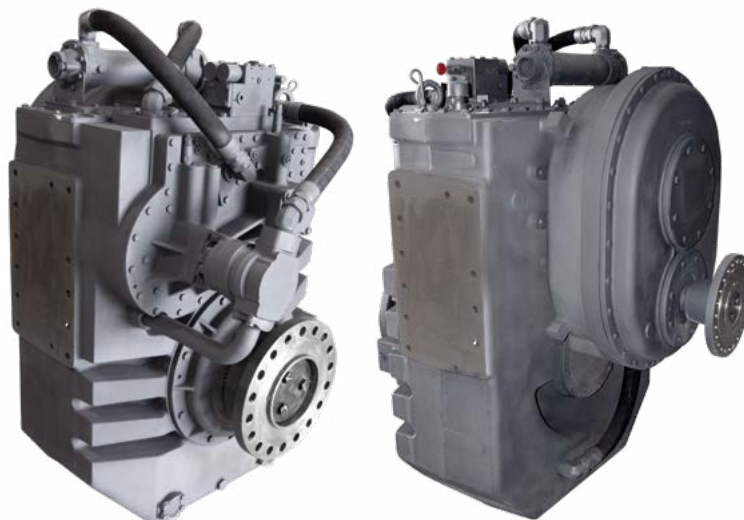


MGX-5600DR

**MAXIMUM 1760 KW (2360 HP)
@ 1800 RPM (CONTINUOUS DUTY)**

STANDARD EQUIPMENT

- Vertical offset, cast iron housing
- Input hub for freestanding installation
- Electric GP-valve with manual override
- EC600PC profile module – interface for engagement signals
- Mounted oil cooler for raw or fresh water cooling
- Oil strainer and oil filter
- Companion flange/bolts set



QUICKSHIFT®
BY TWIN DISC

INPUT RATINGS

Reduction Ratios :1	Continuous Duty		
	@ 1200 RPM	@ 1600 RPM	@ 1800 RPM
4.20, 6.02	1151 kW (1543 hp)	1564 kW (2097 hp)	1760 kW (2360 hp)
6.56	1038 kW (1392 hp)	1458 kW (1955 hp)	1641 kW (2201 hp)
7.01	964 kW (1293 hp)	1352 kW (1813 hp)	1566 kW (2100 hp)
7.22	845 kW (1133 hp)	1088 kW (1459 hp)	1207 kW (1619 hp)

For service classification definitions and important notes refer to the Twin Disc Marine Product Guide or contact Twin Disc directly. Ratings shown for use with standard right hand rotation engines. The maximum allowable rated engine speed is 2100 rpm.

EC600PC ELECTRONIC PROPULSION CONTROL SYSTEM

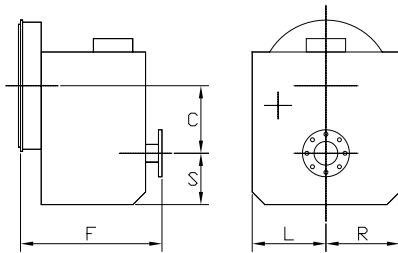
- Optional equipment: display and joystick



OPTIONAL EQUIPMENT

- Hydraulically-operated internal shaft brake
- Mechanical control valve
- EC600PC e-troll module and propulsion control system
- Output shaft-driven trailing pump
- Special companion flange/bolts set for shaft brake application
- Monitoring devices to customer's specification
- Mounting brackets
- Live PTO
 - SAE J744 size 127-2/4, 32-4 (SAE "C", 2/4-bolt) – max. 592 Nm
 - SAE J744 size 127-2/4, 38-4 (SAE "C-C", 2/4-bolt) – max. 1187 Nm
- Hydraulic clutchable pump mount PTO
 - SAE J744 size 127-2/4, 32-4 (SAE "C", 2/4-bolt) – max. 600 Nm
 - SAE J744 size 127-2/4, 38-4 (SAE "C-C", 2/4-bolt) – max. 1186 Nm
- Dry weight including input flange: 3465 kg

MGX-5600DR



C	225 mm (8.86")
S	540 mm (21.26")
F	1286 mm (50.64")
L	525 mm (20.67")
R	525 mm (20.67")

Since 1918, we've been putting horsepower to work by designing, engineering and manufacturing rugged-duty industrial products. Our products and our reputation are bolted to the most renowned engine manufacturers and equipment OEMs in the world. Our mission is to make boats, machines and off-highway vehicles more productive, more durable, more operator-friendly, and more cost-effective. From design and installation consultation through after-sale support, Twin Disc and its distributors are committed to your business. No one knows more about managing horsepower in more ways than Twin Disc.

TRANSMISSIONS

ELECTRONIC CONTROLS

EXPRESS JOYSTICK SYSTEM®

SAILDIVES

EXPRESS POSITIONING®

ARNESON® SURFACE DRIVES

MARINE CONTROL DRIVES

ROLLA™ PROPELLERS

THRUSTERS

VETH PROPULSION SYSTEMS

STEERING SYSTEMS

RUDDERS

TRIM TABS

PUMP DRIVES

PTOS

Twin Disc, Incorporated reminds users of these products that their safe operation depends on use in compliance with engineering information provided in our product guides, installation/assembly drawings and/or manuals. Users are also reminded that safe operation depends on proper installation, operation and routine maintenance and inspection under prevailing conditions. It is the responsibility of users (and not Twin Disc, Incorporated) to provide and install guards or safety devices which may be required by recognized safety standards or by the Occupational Safety and Health Act of 1970 and its subsequent provisions.

USA • AUSTRALIA • BELGIUM • CHINA • INDIA • ITALY • NETHERLANDS • SINGAPORE • SWITZERLAND



Twin Disc, Incorporated
Racine, Wisconsin 53403 USA
Phone +1-262-638-4000
Fax +1-262-638-4482
www.twindisc.com

2102_Bulletin_MGX-5600DR
© 2021, Twin Disc, Incorporated
Printed in the USA