

Maximum 2729 kW (3660 hp) @2100 RPM (MEDIUM DUTY for Waterjet Propulsion)

STANDARD EQUIPMENT**MGX-61500SC-HL/HR**

Horizontal offset, aluminum housing

Input hub for freestanding installation

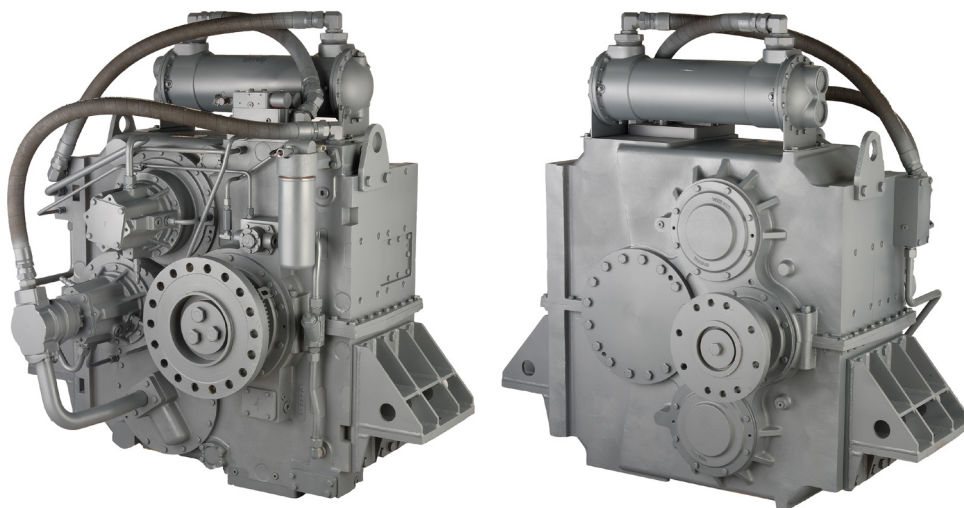
Electric GP-valve with manual override

EC050 Profile module

– interface for engagement signals

Mounted oil cooler for raw water cooling

Oil strainer and oil filter



QUICKSHIFT®
You've got to feel it to believe it.

INPUT RATINGS FOR WATERJET PROPULSION - KILOWATTS (KW) (HORSEPOWER (HP))*

For service classification definitions and important notes refer to www.twindisc.com, the Twin Disc Marine Product Guide or contact Twin Disc directly. Please contact Twin Disc for special rating approvals.

Reduction Ratios** :1	Medium Duty		
	@ 1600 RPM	@ 1800 RPM	@ 2100 RPM
1.84, 1.98, 2.18 2.26, 2.56, 2.97	2079 kW (2788 hp)	2339 kW (3137 hp)	2729 kW (3660 hp)

* Ratings shown for use with standard right-hand rotation engines.

The maximum allowable rated engine speed is 2100 rpm.

** Additional ratios will be made available upon request.



Specifications subject to change without prior notice in the interest of continual product improvement. Contact your local Twin Disc representative for engineering specifications, Survey Society Approvals and Classifications.

Scan QR code to see Twin Disc's entire Marine product line.



OPTIONS

Harness with single point interface to Twin Disc EC300 control system

Oil cooler for fresh water cooling

Output shaft driven trailing pump

Companion flange/ bolts set

Monitoring devices to customer's specification

Mounting brackets

Live PTO

SAE J744 size 101-2, 22-4 (SAE "B", 2-bolt) – max. 209 Nm

SAE J744 size 127-2/4, 32-4 (SAE "C", 2/4-bolt) – max. 592 Nm

SAE J744 size 127-2/4, 38-4 (SAE "C-C", 2/4-bolt) – max. 1187 Nm

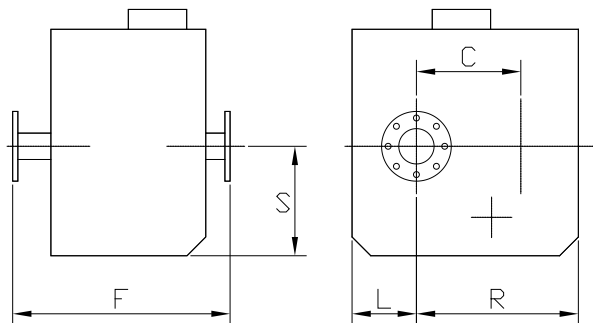
Hydraulic clutchable pump mount PTO

SAE J744 size 127-2/4, 32-4 (SAE "C", 2/4-bolt) – max. 592 Nm

SAE J744 size 127-2/4, 38-4 (SAE "C-C", 2/4-bolt) – max. 1186 Nm

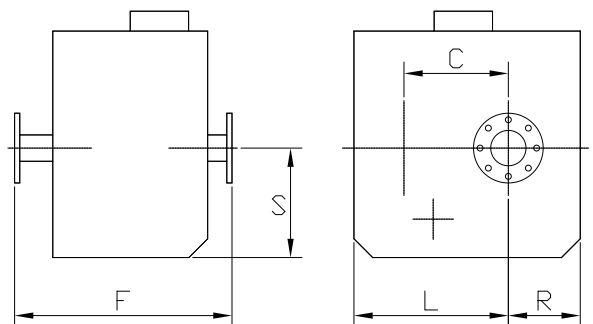
Dry weight incl. input flange: **2195 kg**

MGX-61500SC-HL



C	460 mm (18.11")
S	619 mm (24.36")
F	1017 mm (40.04")
L	397 mm (15.63")
R	745 mm (29.33")

MGX-61500SC-HR



C	460 mm (18.11")
S	619 mm (24.36")
F	1017 mm (40.04")
L	745 mm (29.33")
R	397 mm (15.63")

Twin Disc, Incorporated reminds users of these products that their safe operation depends on use in compliance with engineering information provided in our catalog. Users are also reminded that safe operation depends on proper installation, operation and routine maintenance and inspection under prevailing conditions. It is the responsibility of users (and not Twin Disc, Incorporated) to provide and install guards or safety devices which may be required by recognized safety standards or by the Occupational Safety and Health Act of 1970 and its subsequent provisions.

United States of America • Australia • Belgium • Canada • China • India • Italy • Singapore • Switzerland

For nearly a century, we've been making boats perform better and more reliably. From system-design consultation to application development to in-service support, Twin Disc provides fully integrated propulsion solutions that will optimize your craft's performance, reliability and safety over the years. Bring Twin Disc aboard early in the development process, and you'll enjoy a lifetime of enhanced operating value.

TRANSMISSIONS • ELECTRONIC CONTROLS •
EXPRESS JOYSTICK SYSTEM® • SAILDRIVES •
EXPRESS POSITIONING® • ARNESON SURFACE
DRIVES • MARINE CONTROL DRIVES •
ROLLA PROPELLERS • BOW & STERN
THRUSTERS • STEERING SYSTEMS •
RUDDERS • TRIM TABS



Twin Disc, Incorporated
Racine, Wisconsin 53403 USA
Phone +1-262-638-4000
Fax +1-262-638-4482
www.twindisc.com

*TD-Bulletin-MGX-61500SC-HL/HR
© 2016, Twin Disc, Incorporated
Printed in the USA - 2/2016*