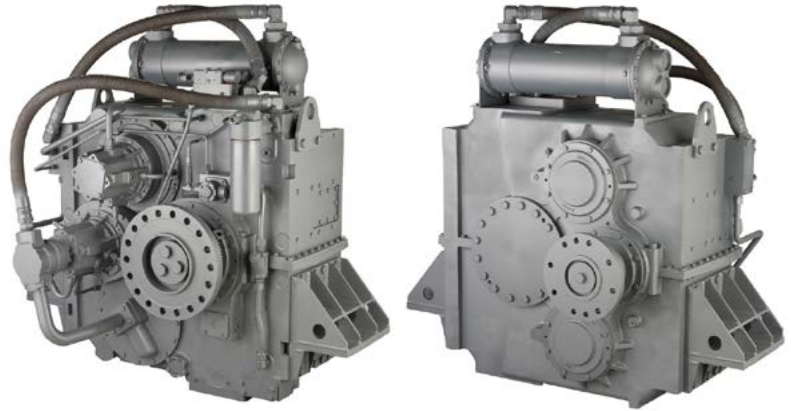


**MGX-61500SC-HL/HR**

**MAXIMUM 2729 KW (3660 HP)  
@ 2100 RPM (MEDIUM DUTY  
FOR WATERJET PROPULSION)**

**STANDARD EQUIPMENT**

- Horizontal offset, aluminum housing
- Electric GP-valve with manual override
- Input hub for freestanding installation
- EC600PC profile module – interface for engagement signals
- Mounted oil cooler for raw water cooling
- Oil strainer and oil filter

**QUICKSHIFT®**  
BY TWIN DISC

**INPUT RATINGS**

Reduction Ratios* :1	Medium Duty		
	@ 1600 RPM	@ 1800 RPM	@ 2100 RPM
1.84, 1.98, 2.18 2.26, 2.56, 2.97	2079 kW (2788 hp)	2339 kW (3137 hp)	2729 kW (3660 hp)

*For service classification definitions and important notes refer to the Twin Disc Marine Product Guide or contact Twin Disc directly. Ratings shown for use with standard right hand rotation engines. The maximum allowable rated engine speed is 2100 rpm.*

*\* Additional ratios will be made available upon request.*

**EC600PC ELECTRONIC PROPULSION CONTROL SYSTEM**

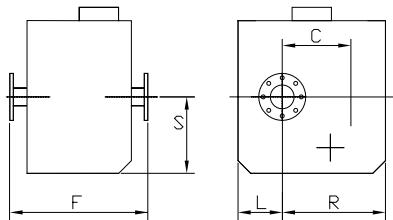
- Optional equipment: display and joystick



## OPTIONAL EQUIPMENT

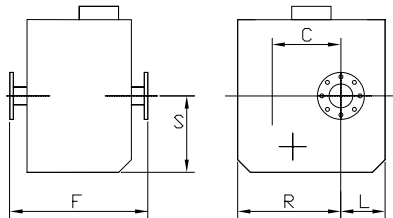
- EC600PC e-troll module and propulsion control system
- Oil cooler for fresh water cooling
- Output shaft-driven trailing pump
- Companion flange/bolts set
- Monitoring devices to customer's specification
- Mounting brackets
- Live PTO
  - SAE J744 size 101-2, 22-4 (SAE "B", 2-bolt) – max. 209 Nm
  - SAE J744 size 127-2/4, 32-4 (SAE "C", 2/4-bolt) – max. 592 Nm
  - SAE J744 size 127-2/4, 38-4 (SAE "C-C", 2/4-bolt) – max. 1187 Nm
- Hydraulic clutchable pump mount PTO
  - SAE J744 size 127-2/4, 32-4 (SAE "C", 2/4-bolt) – max. 592 Nm
  - SAE J744 size 127-2/4, 38-4 (SAE "C-C", 2/4-bolt) – max. 1186 Nm
- Dry weight including input flange: 2195 kg

### MGX-61500SC-HL



C	460 mm (18.11")
S	619 mm (24.36")
F	1017 mm (40.04")
L	397 mm (15.63")
R	745 mm (29.33")

### MGX-61500SC-HR



C	460 mm (18.11")
S	619 mm (24.36")
F	1017 mm (40.04")
L	745 mm (29.33")
R	397 mm (15.63")

Since 1918, we've been putting horsepower to work by designing, engineering and manufacturing rugged-duty industrial products. Our products and our reputation are bolted to the most renowned engine manufacturers and equipment OEMs in the world. Our mission is to make boats, machines and off-highway vehicles more productive, more durable, more operator-friendly, and more cost-effective. From design and installation consultation through after-sale support, Twin Disc and its distributors are committed to your business. No one knows more about managing horsepower in more ways than Twin Disc.

#### TRANSMISSIONS

#### ELECTRONIC CONTROLS

#### EXPRESS JOYSTICK SYSTEM®

#### SAILDRIVES

#### EXPRESS POSITIONING®

#### ARNESON® SURFACE DRIVES

#### MARINE CONTROL DRIVES

#### ROLLA™ PROPELLERS

#### THRUSTERS

#### VETH PROPULSION SYSTEMS

#### STEERING SYSTEMS

#### RUDDERS

#### TRIM TABS

#### PUMP DRIVES

#### PTOS

Twin Disc, Incorporated reminds users of these products that their safe operation depends on use in compliance with engineering information provided in our product guides, installation/assembly drawings and/or manuals. Users are also reminded that safe operation depends on proper installation, operation and routine maintenance and inspection under prevailing conditions. It is the responsibility of users (and not Twin Disc, Incorporated) to provide and install guards or safety devices which may be required by recognized safety standards or by the Occupational Safety and Health Act of 1970 and its subsequent provisions.

USA • AUSTRALIA • BELGIUM • CHINA • INDIA • ITALY • NETHERLANDS • SINGAPORE • SWITZERLAND



Twin Disc, Incorporated  
 Racine, Wisconsin 53403 USA  
 Phone +1-262-638-4000  
 Fax +1-262-638-4482  
[www.twindisc.com](http://www.twindisc.com)

2102\_Bulletin\_MGX-61500SC-HL/HR  
 © 2021, Twin Disc, Incorporated  
 Printed in the USA