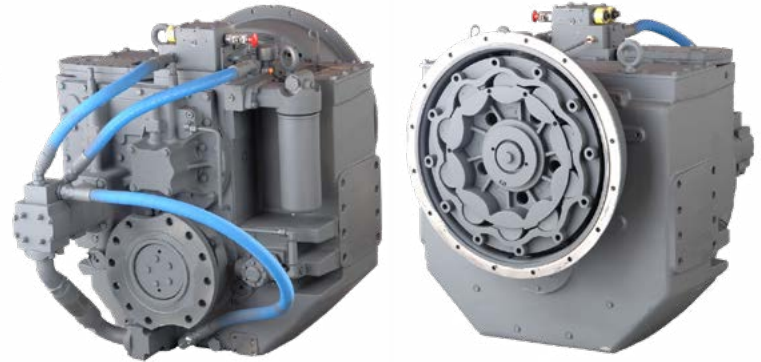


MGX-6848SC

**MAXIMUM 1342 KW (1800 HP)
@ 1800 RPM (MEDIUM DUTY)**

STANDARD EQUIPMENT

- Vertical offset, aluminum housing
- Electric GP-valve with manual override
- EC600PC profile module – interface for engagement signals
- Mounted oil cooler for raw water cooling
- Oil strainer and oil filter



QUICKSHIFT®
BY TWIN DISC

INPUT RATINGS

Reduction Ratios :1	Intermediate Duty		Medium Duty		Continuous Duty	
	@ 1800 RPM	@ 2100 RPM	@ 1600 RPM	@ 1800 RPM	@ 1600 RPM	@ 1800 RPM
1.51, 1.88, 2.03 2.37, 2.47, 2.58 2.93	1342 kW (1800 hp)	1566 kW (2100 hp)	1187 kW (1592 hp)	1342 kW (1800 hp)	1111 kW (1490 hp)	1250 kW (1676 hp)
3.21	1269 kW (1702 hp)	1453 kW (1948 hp)	1103 kW (1479 hp)	1226 kW (1644 hp)	1074 kW (1440 hp)	1194 kW (1601 hp)

For service classification definitions and important notes refer to the Twin Disc Marine Product Guide or contact Twin Disc directly. Ratings shown for use with standard right hand rotation engines. The maximum allowable rated engine speed is 2300 rpm (2500 rpm for ratios 2.47:1, 2.93:1 and 3.21:1).

EC600PC ELECTRONIC PROPULSION CONTROL SYSTEM

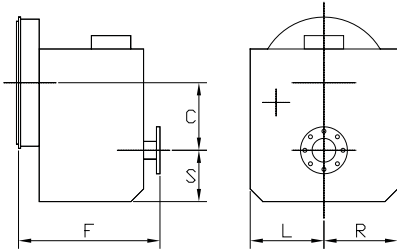
- Optional equipment: display and joystick



OPTIONAL EQUIPMENT

- SAE J617 housing no. 0
- SAE J617 housing no. 00
- Flexible coupling for 18" flywheel (SAE J620 size 460)
- Flexible coupling for 21" flywheel (SAE J620 size 530)
- Input hub for freestanding installation
- Mechanical control valve
- EC600PC e-troll module and propulsion control system
- Oil cooler for fresh water cooling
- Output shaft-driven trailing pump
- Companion flange/bolts set
- Monitoring devices to customer's specification
- Mounting brackets
- Live PTO
 - SAE J744 size 101-2, 22-4 (SAE "B", 2-bolt) – max. 209 Nm
 - SAE J744 size 127-2/4, 32-4 (SAE "C", 2/4-bolt) – max. 592 Nm
 - SAE J744 size 127-2/4, 38-4 (SAE "C-C", 2/4-bolt) – max. 1187 Nm
- Hydraulic clutchable pump mount PTO
 - SAE J744 size 127-2/4, 32-4 (SAE "C", 2/4-bolt) – max. 592 Nm
 - SAE J744 size 127-2/4, 38-4 (SAE "C-C", 2/4-bolt) – max. 1187 Nm
- Dry weight including SAE no. 0 housing and SAE 460 flexible coupling: 1001 kg

MGX-6848SC



C	310 mm (12.20")
S	300 mm (11.81")
F	758 mm (29.83")
L	440 mm (17.32")
R	440 mm (17.32")

Since 1918, we've been putting horsepower to work by designing, engineering and manufacturing rugged-duty industrial products. Our products and our reputation are bolted to the most renowned engine manufacturers and equipment OEMs in the world. Our mission is to make boats, machines and off-highway vehicles more productive, more durable, more operator-friendly, and more cost-effective. From design and installation consultation through after-sale support, Twin Disc and its distributors are committed to your business. No one knows more about managing horsepower in more ways than Twin Disc.

TRANSMISSIONS

ELECTRONIC CONTROLS

EXPRESS JOYSTICK SYSTEM®

SAILDRIVES

EXPRESS POSITIONING*

ARNESON® SURFACE DRIVES

MARINE CONTROL DRIVES

ROLLA™ PROPELLERS

THRUSTERS

VETH PROPULSION SYSTEMS

STEERING SYSTEMS

RUDDERS

TRIM TABS

PUMP DRIVES

PTOS

Twin Disc, Incorporated reminds users of these products that their safe operation depends on use in compliance with engineering information provided in our product guides, installation/assembly drawings and/or manuals. Users are also reminded that safe operation depends on proper installation, operation and routine maintenance and inspection under prevailing conditions. It is the responsibility of users (and not Twin Disc, Incorporated) to provide and install guards or safety devices which may be required by recognized safety standards or by the Occupational Safety and Health Act of 1970 and its subsequent provisions.

USA • AUSTRALIA • BELGIUM • CHINA • INDIA • ITALY • NETHERLANDS • SINGAPORE • SWITZERLAND



Twin Disc, Incorporated
 Racine, Wisconsin 53403 USA
 Phone +1-262-638-4000
 Fax +1-262-638-4482
www.twindisc.com

2102_Bulletin_MGX-6848SC
 © 2021, Twin Disc, Incorporated
 Printed in the USA