
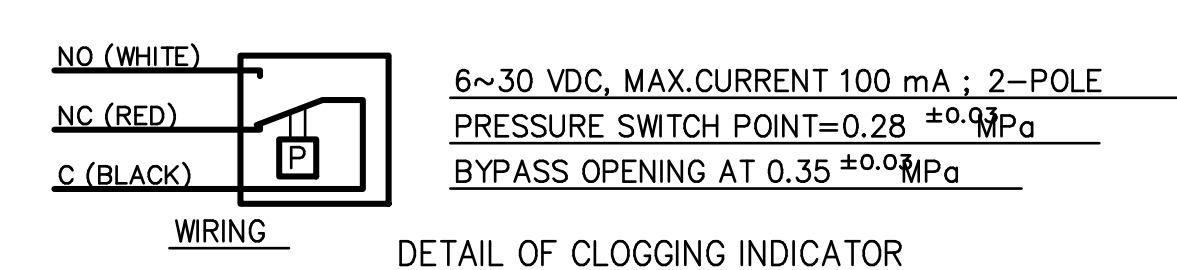


<p>NG (WHITE)</p> <p>NC (RED)</p> <p>NC (BLACK)</p>  <p>WIRING</p>	<p>6~30 VDC, MAX.CURRENT 100 mA ; 2-POLE</p> <p>PRESSURE SWITCH POINT=0.28 ±0.01MPa</p> <p>BYPASS OPENING AT 0.35 ±0.01MPa</p> <p>DETAIL OF CLOGGING INDICATOR</p>
---	--





REV	BY		APPD.							REV	ZONE	CH. NO.	DATE		REV	ZONE	CH. NO.	DATE		

NOTICE! THIS PRINT CONTAINS
PROPRIETARY INFORMATION AND IS
NOT TO BE USED IN ANY MANNER
DETRIMENTAL TO THE INTERESTS OF
TWIN DISC, INCORPORATED
RACINE, WI 53403 - USA
THIS NOTICE IS NOT INTENDED
TO NULLIFY OR LIMIT RIGHTS
GRANTED TO THE U.S. GOVERNMENT
OR OTHERS BY CONTRACT.

	MATERIAL	
	—	
	HEAT TREAT	
	—	
	SURFACE TREATMENT	

	MASS	WR ²
	○.○ kg	N-r
FIRST USE		
ASSY.		
MODEL MGX-6599A		
NAME		
GENERAL		

UNLESS OTHERWISE SPECIFIED
DIMENSIONS ARE mm
MACHINED DIMENSIONS
X. ± 0.75
X.X ± 0.25
X.XX ± 0.13
ALL ANGULAR TOLERANCES $\pm 1^\circ$
GEOMETRIC TOLERANCING
PER ANSI Y14.5M 1982

DATE	140821	 INCORPORATED RACINE, WI 53403 - USA	
SCALE	1:5		
DRN.	R.Mera	 P-72817	
CHK.	A.Kawakami		
APPD.	A.Kawakami		
		SHEET 1 OF 1	REV ____