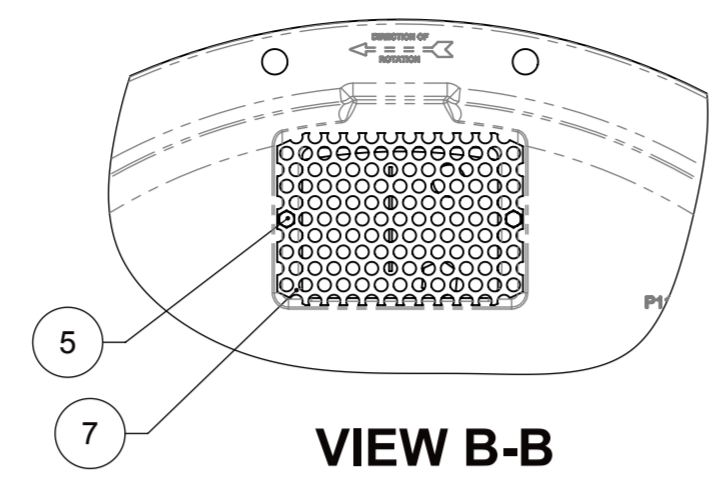


1 INPUT GROUP MOUNTING FACE

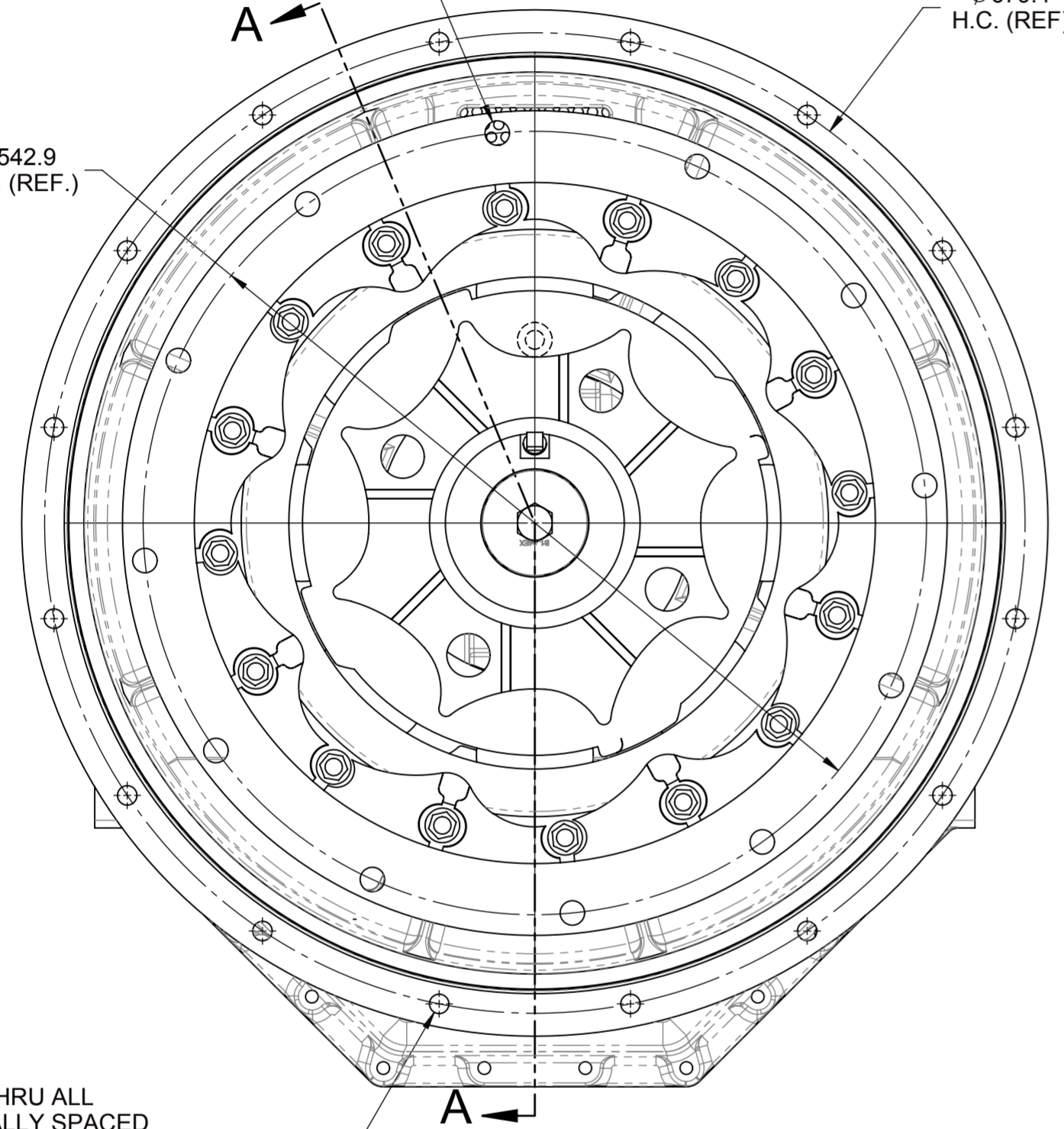
Ø 17.0 THRU
12 HOLES EQUALLY SPACED
USE 8.8 PROPERTY CLASS QUALITY
CAPSCREW PER ISO 898-1 AND TORQUE
TO S574 OR SERVICE MANUAL VALUES
(SCREWS ARE CUSTOMER SUPPLIED)



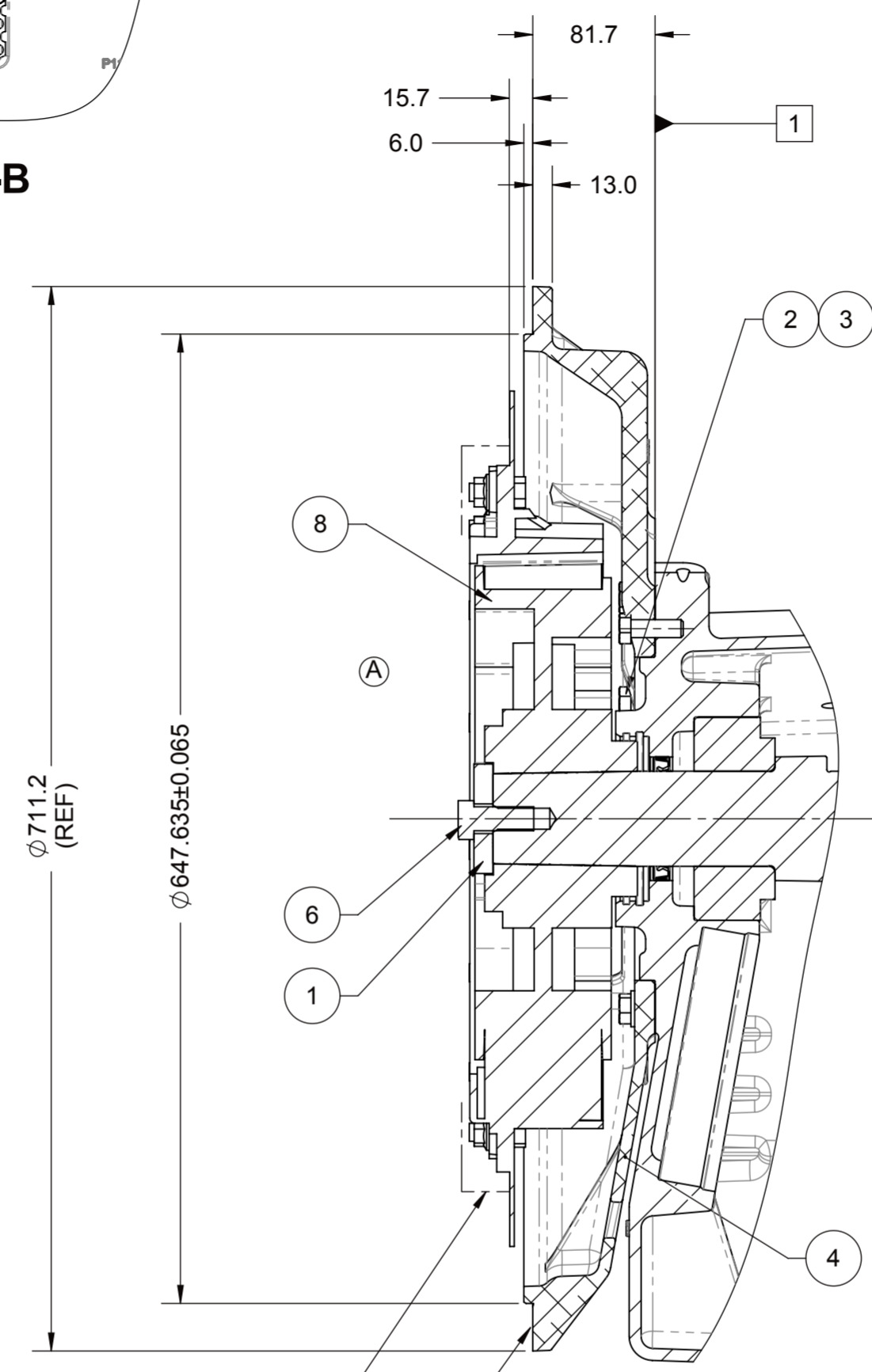
VIEW B-B

Ø 679.4
H.C. (REF.)

Ø 542.9
H.C. (REF.)



16X Ø 13.5 THRU ALL
HOLES EQUALLY SPACED
USE 8.8 PROPERTY CLASS QUALITY
CAPSCREWS PER ISO 898-1 AND TORQUE
TO S574 OR SERVICE MANUAL VALUES.
(SCREWS ARE CUSTOMER SUPPLIED)



SECTION A-A

FLYWHEEL OUTLINE
MUST CONFORM TO
SAE J620 NO. 460

SAE#0 HOUSING
MOUNTING FACE
MUST CONFORM
TO SAE J617

BILL OF MATERIAL			
ITEM NO.	QTY.	PART NO.	DESCRIPTION
1	1	B1504EX	WASHER, RETAINER
2	9	MA996G	SCREW, HEX. HD.
3	9	MA1039B	WASHER, STAMPED
4	1	P11647	FLANGE, PILOT
5	2	PM5967B	SCREW, HEX HEAD
6	1	PM2018B	SCREW, HEX HEAD
7	1	PX11570	COVER ASSY
8	1	1030215	COUPLING, FLEXIBLE

- REFER TO THE TRANSMISSION MASS ELASTIC DRAWING FOR OTHER MASS ELASTIC DATA.
- FOR TRANSMISSION SHIPMENT, SECURE COUPLING BY USING WIRE THROUGH COUPLING FLANGE HOLES AND SAE HOUSING FLANGE HOLES.
- AFTER ASSEMBLY OF THE MARINE TRANSMISSION ONTO THE ENGINE, VERIFICATION THAT ENGINE FLYWHEEL ENDPLAY EXISTS MUST BE MADE. IF ENGINE FLYWHEEL ENDPLAY DOES NOT EXIST, PLEASE CONTACT TWIN DISC PRODUCT SERVICE OR AUTHORIZED DISTRIBUTOR.
- SEE DRAWING 1025433F FOR ADDITIONAL COUPLING TECHNICAL DATA.
- EMERGENCY COME-HOME DEVICE INCLUDED, LIMIT TO 25% OF THE NOMINAL TORQUE.

APPLICABLE MODELS:
MG-5136A PER 1027557 ASSEMBLY
MGX-5136A PER 1025600 ASSEMBLY
MG-5136SC PER 1027560 ASSEMBLY
MGX-5136SC PER 1027445 ASSEMBLY

ASSEMBLY INSTRUCTIONS:
- FOR MG-5136A PER 1027557 ASSEMBLY,
AND MGX-5136A PER 1025600 ASSEMBLY,
SEE S570DX SECTION I. FOR INSTRUCTIONS.

- FOR MG-5136SC PER 1027560 ASSEMBLY,
AND MGX-5136SC PER 1027445 ASSEMBLY,
SEE S570DW SECTION I. FOR INSTRUCTIONS.

- REFERENCE APPLICABLE S570 SERIES STANDARD
FOR ADDITIONAL STANDARDS AND INSTRUCTIONS
THAT MAY APPLY.

- ALL FASTENERS, FITTINGS AND PLUG TO BE
TORQUED PER S574.

COUPLING No.	SAE J620 FLYWHEEL SIZE	MAX. COUPLING RPM*	COUPLING kg.m ²		COUPLING WEIGHT kg		CERTIFICATION
			OUTER PART	INNER PART **	OUTER PART	INNER PART	
CF-R-318-018-62196-001	460	3000	0.444	0.146	10.05	14.11	NONE

* SEE THE TRANSMISSION ASSEMBLY DRAWING
FOR MAXIMUM TRANSMISSION RPM

** THE WR² OF INNER PARTS INCLUDES 1/4 SHAFT C²

FIRST USE ASSEMBLY: 1027445 FIRST USE MODEL: MGX-5136SC SIMILAR TO:	WEIGHT: 37.65kg WR ² : kg-m ²	THIRD ANGLE PROJECTION	MATERIAL:	DATE: 07/31/2015 SCALE: 1:4
METRIC	UNLESS OTHERWISE SPECIFIED MACHINED DIMENSIONS X ±0.75 XX ±0.25 XXX ±0.13	ALL ANGULAR TOLERANCES ±1° GEOMETRIC TOLERANCING PER ASME Y14.5M 1994	HEAT TREAT:	DRAWN BY: DJM CHECKED BY: NFC
NOTICE! THIS PRINT CONTAINS PROPRIETARY INFORMATION AND IS NOT TO BE USED IN ANY MANNER DETRIMENTAL TO THE INTEREST OF TWIN DISC, INCORPORATED THIS NOTICE IS NOT INTENDED TO NULLIFY OR LIMIT RIGHTS GRANTED TO THE U.S. GOVERNMENT OR OTHERS BY CONTRACT.			DESCRIPTION: GROUP, INPUT SAE#0/SAE 460 CF-R-318-HR	APPROVED BY: NFC

A	ECNWF-25414	10/02/2015
REV	CHANGE NO.	DATE
RACINE, WI 53403 - USA		
PX1030217		
DWG SIZE: A2	SHEET: 1 OF 1	REV: A