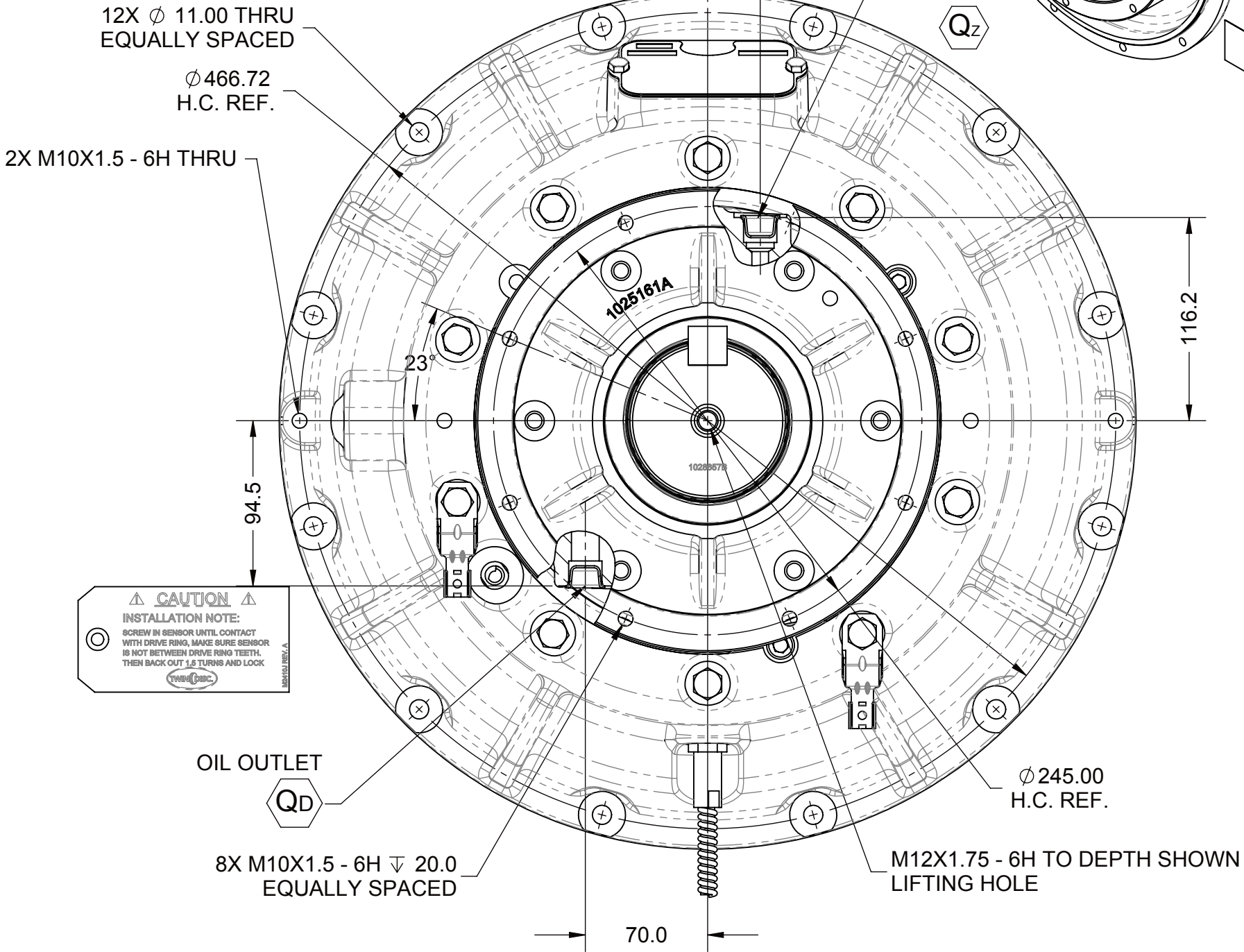
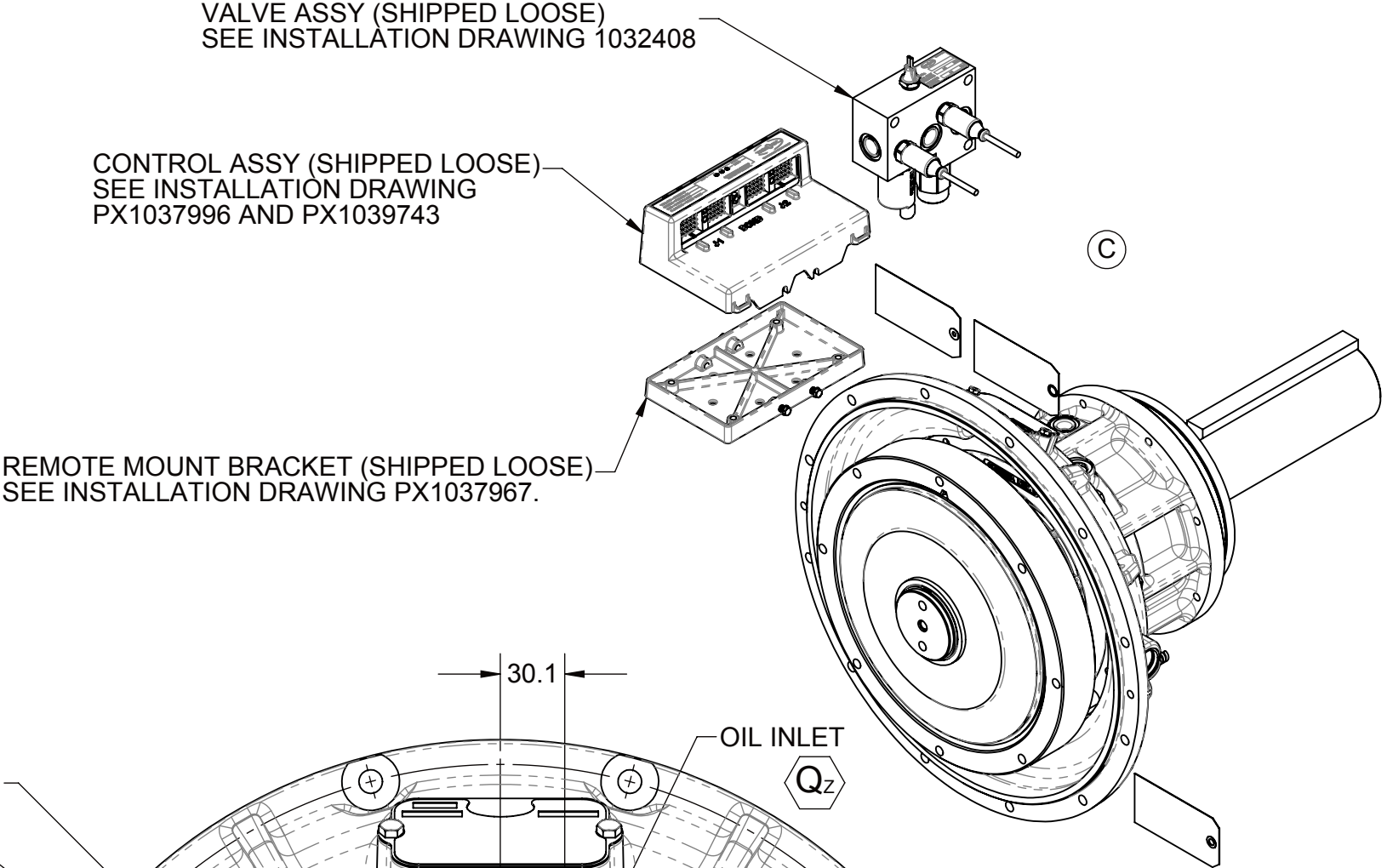
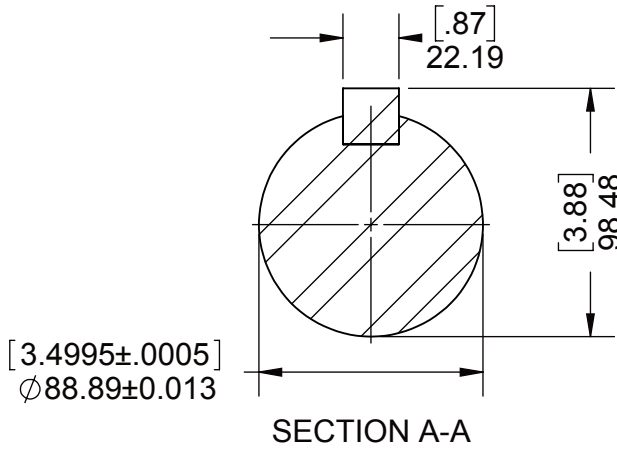
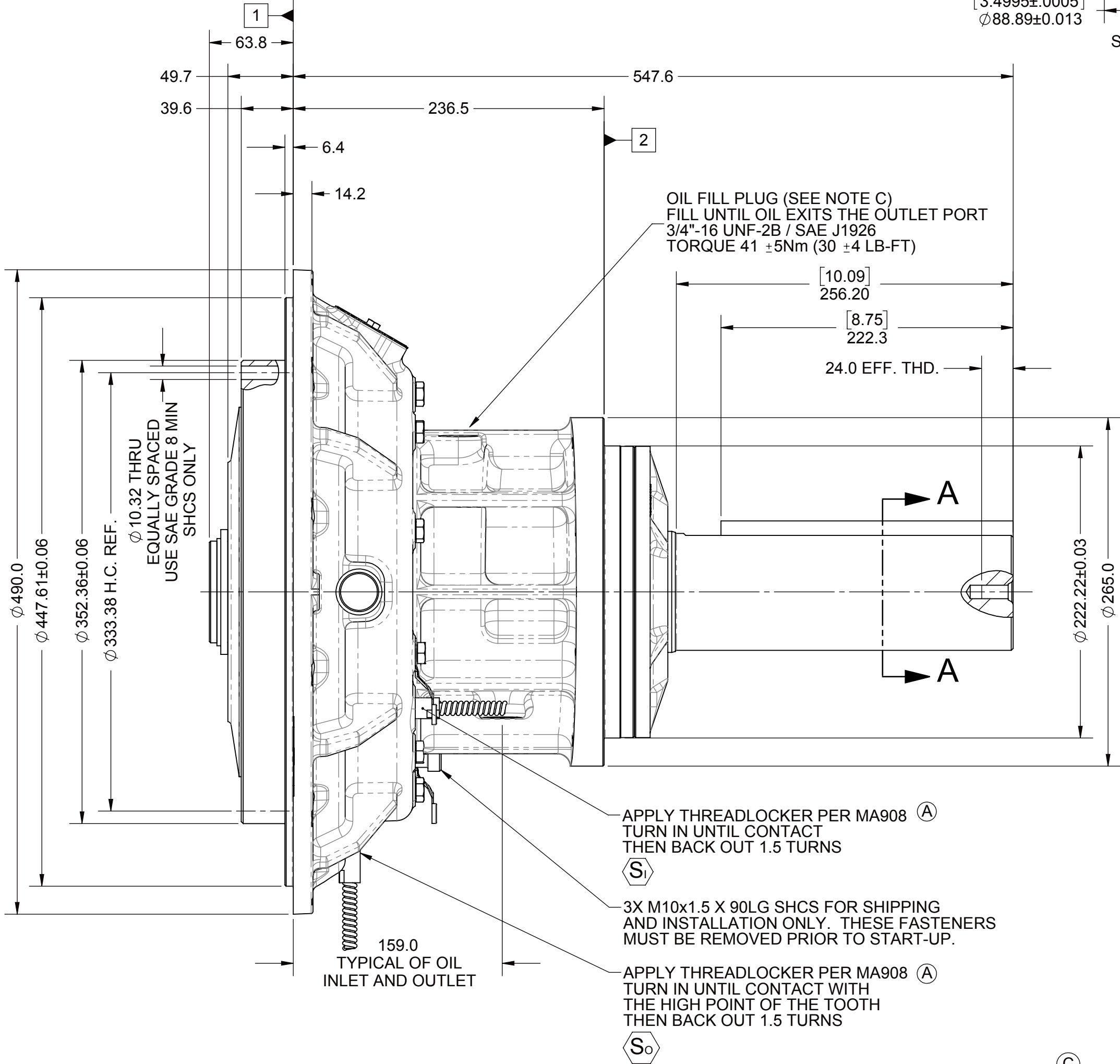


- 1 INPUT MOUNTING FACE AND REFERENCE PLANE  
2 SUPPORT PLATE MOUNTING FACE

- NOTES:  
A. ALL POINTS AVAILABLE FOR TESTING ARE CODED  $\odot$   
B. REFER TO MANUAL FOR RECOMMENDED OIL, CHECKING AND MAINTENANCE PROCEDURES  
C. REPLACE INSTALLATION BOLTS (3) BEFORE OPERATING PTO SEE MANUAL FOR DETAILS



**CAUTION**  
INSTALLATION NOTE:  
SCREW IN SENSOR UNTIL CONTACT  
WITH DRIVE RING. MAKE SURE SENSOR  
IS NOT BETWEEN DRIVE RING TEETH.  
THEN BACK OUT 1.5 TURNS AND LOCK.

TEST PORTS

SYMBOL	DESCRIPTION	PORT/ STANDARD	DESCRIPTION	TORQUE	CLEARANCE FOR REMOVAL (mm)	ELECTRICAL CONNECTION
$\odot$	FLOW TO SUMP	3/4"-16 UNF-2B / SAE J1926	O-RING PORT	41 ± 5 Nm (30 ± 4 LB-FT)	15	-
$\odot$	FLOW TO CLUTCH	3/4"-16 UNF-2B / SAE J926	O-RING PORT	41 ± 5 Nm (30 ± 4 LB-FT)	15	-
$\odot$	INPUT SPEED SENSOR (72 PULSES PER REV.)	5/8"-18 UNF - 2A	-	24.4 ± 2.7 Nm (18 ± 2 LB-FT)	-	DEUTSCH DT04-3P
$\odot$	OUTPUT SPEED SENSOR (30 PULSES PER REV.)	5/8"-18 UNF - 2A	-	24.4 ± 2.7 Nm (18 ± 2 LB-FT)	-	DEUTSCH DT04-3P

FIRST USE ASSEMBLY: FIRST USE MODEL: RC211 SIMILAR TO:	WEIGHT: 140 kg WR <sup>2</sup> : kg-m <sup>2</sup>	THIRD ANGLE PROJECTION	MATERIAL: HEAT TREAT:	DATE: 10/21/2015 SCALE: 1:3 DRAWN BY: MPS CHECKED BY: GAM APPROVED BY: MPS	C ECNWF-101828 03/23/2021 REV CHANGE NO. DATE
NOTICE! THIS PRINT CONTAINS PROPRIETARY INFORMATION AND IS NOT TO BE USED IN ANY MANNER DETRIMENTAL TO THE INTEREST OF TWIN DISC, INCORPORATED. THIS NOTICE IS NOT INTENDED TO NULLIFY OR LIMIT RIGHTS GRANTED TO THE U.S. GOVERNMENT OR OTHERS BY CONTRACT.					
UNLESS OTHERWISE SPECIFIED MACHINED DIMENSIONS X ±0.75 XX ±0.25 XXX ±0.13 ALL ANGULAR TOLERANCES ±1° GEOMETRIC TOLERANCING PER ASME Y14.5M 1994					
DESCRIPTION: INSTALLATION PTO, RC211P					
DWG SIZE: A2 SHEET: 1 OF 1 REV: C					



RACINE, WI 53403 - USA

PX1030519C