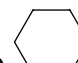
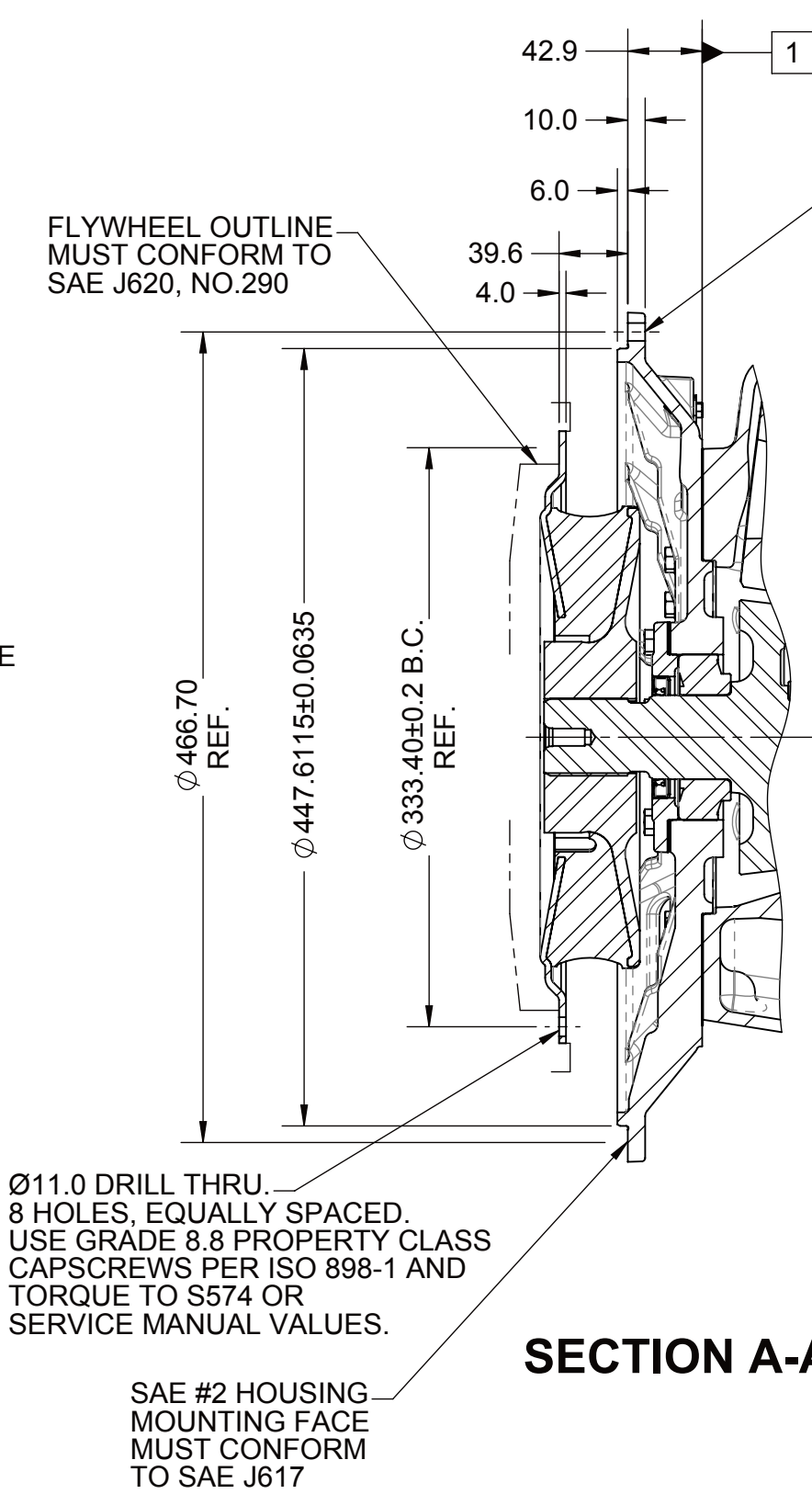


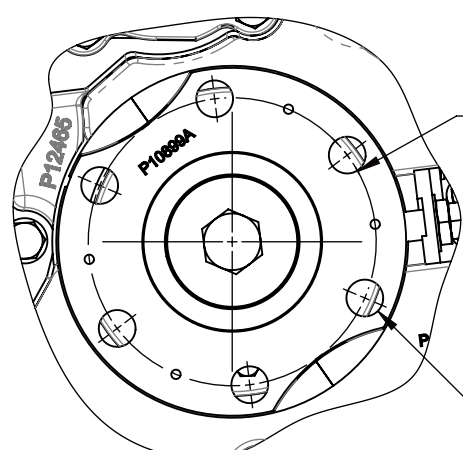
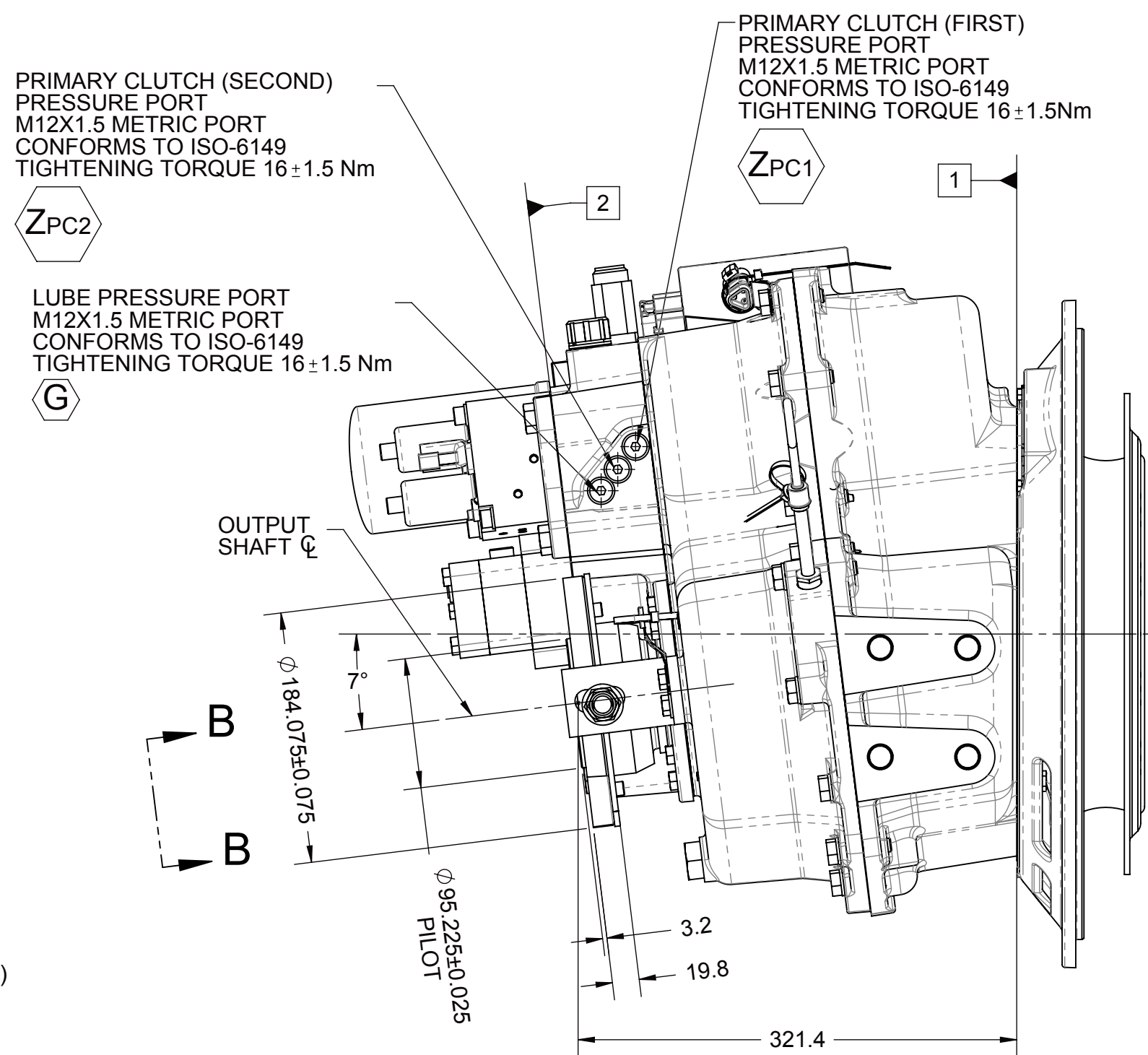
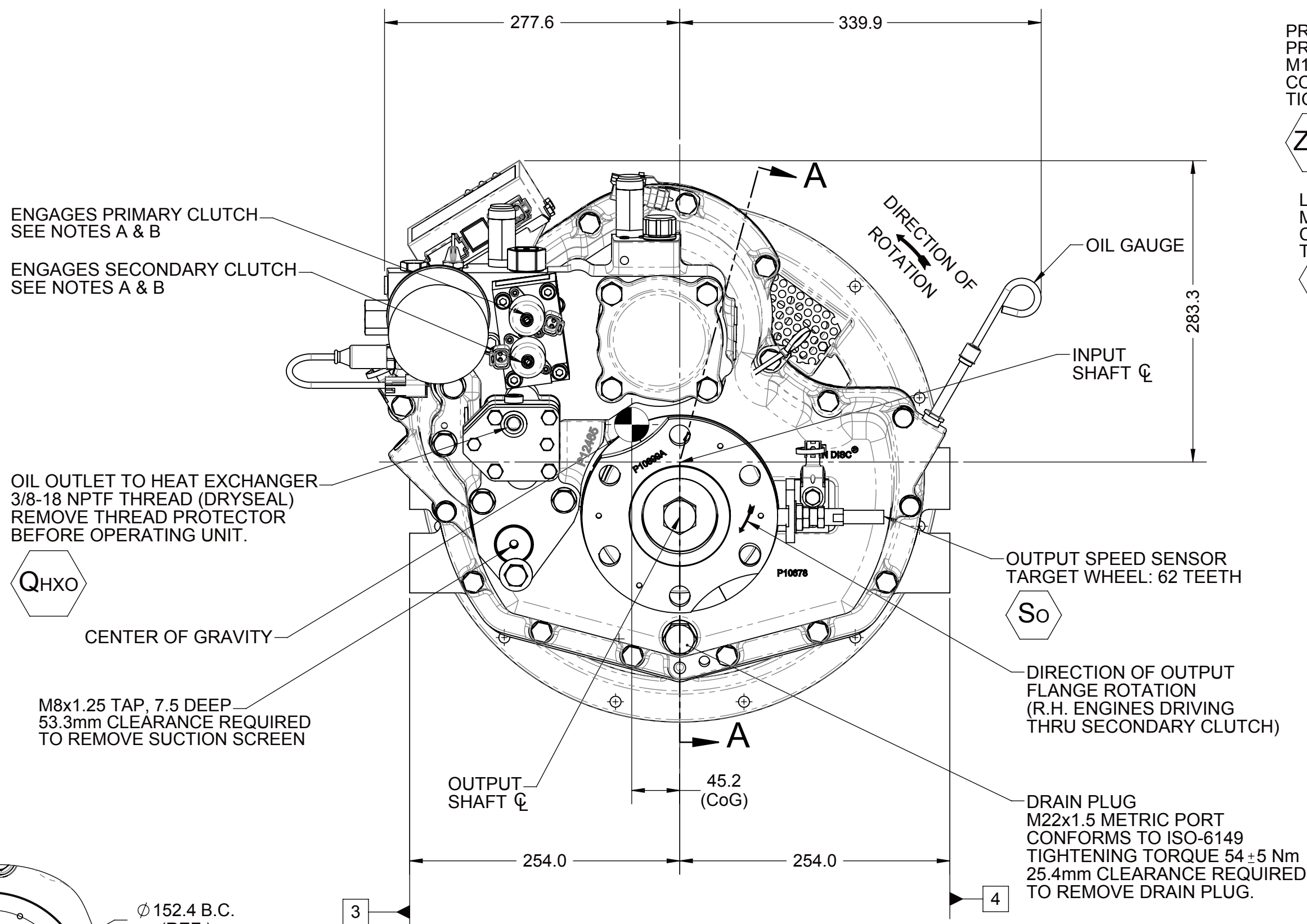
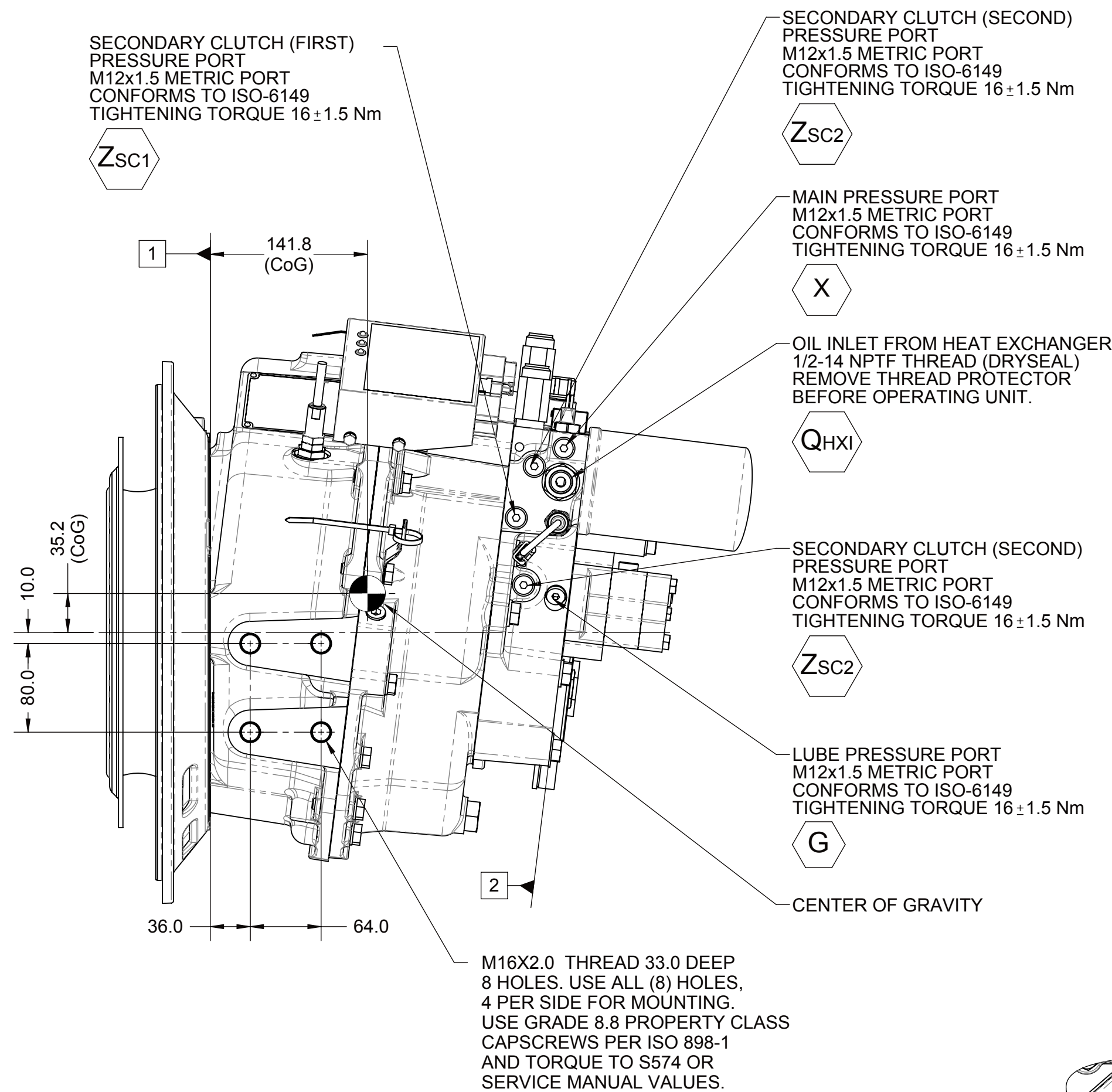
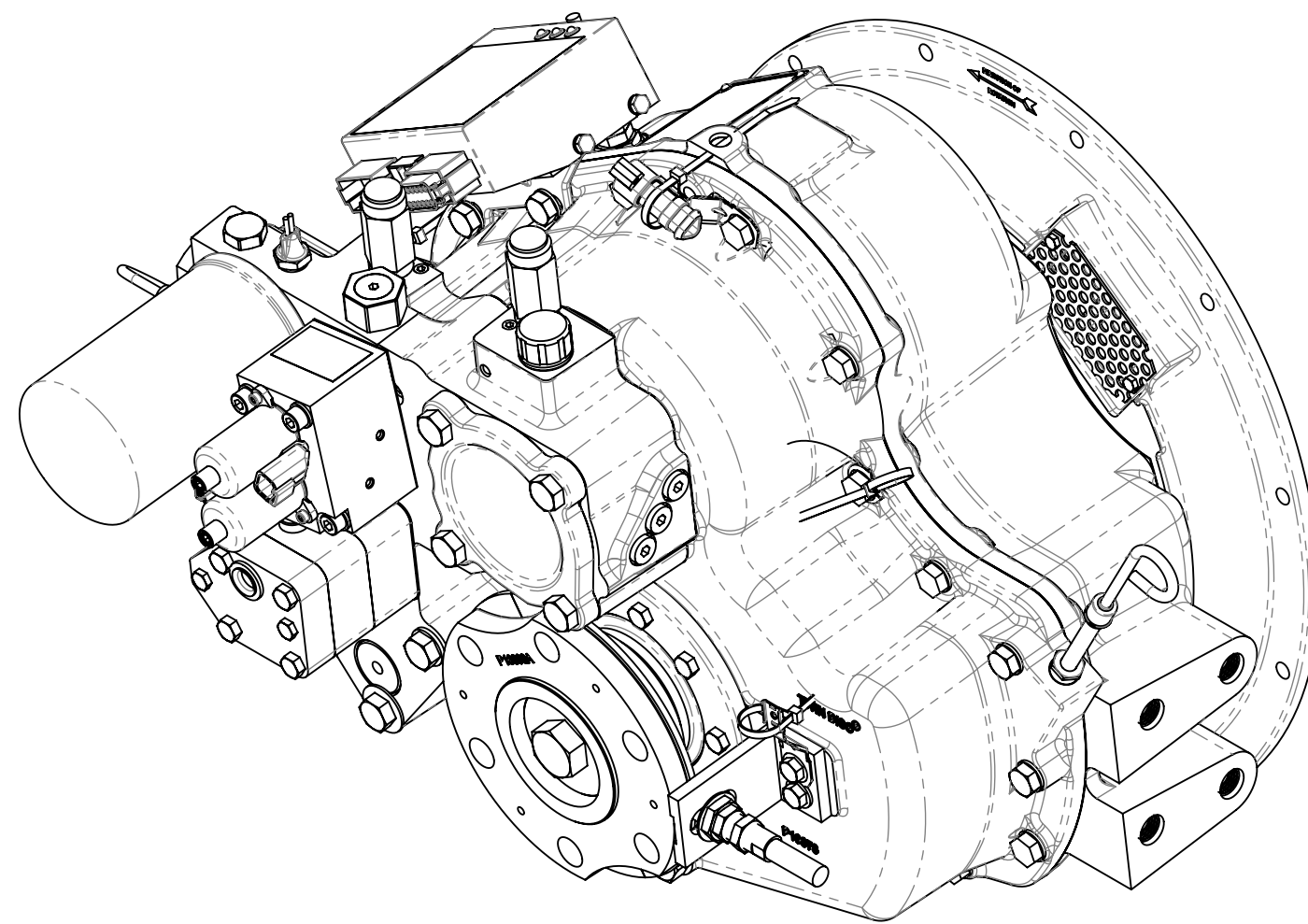
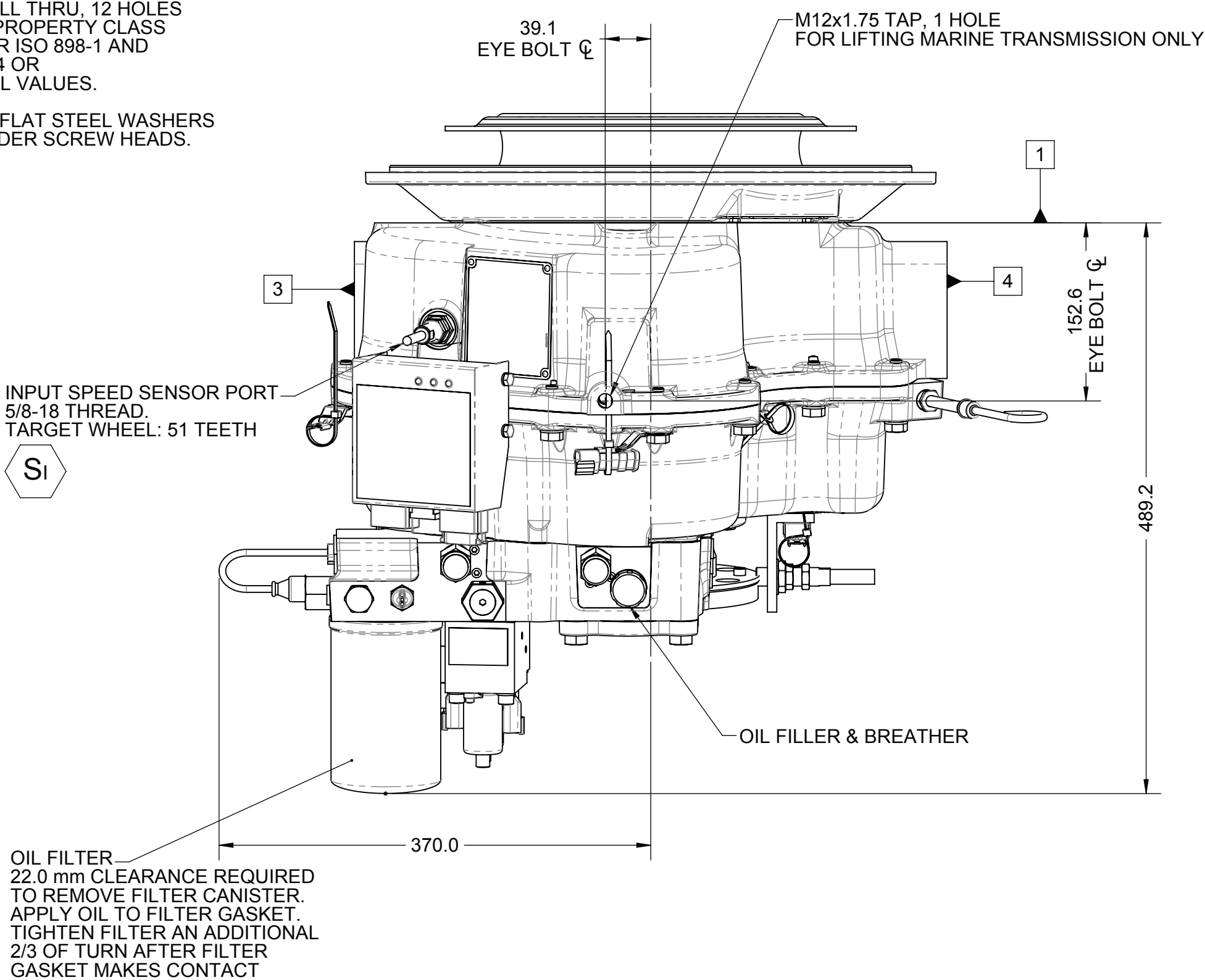
- 1 INPUT GROUP REFERENCE PLANE
- 2 PTO GROUP REFERENCE PLANE
- 3 LEFT MOUNTING BRACKET FACE
- 4 RIGHT MOUNTING BRACKET FACE

NOTES:

1. PROPORTIONAL CONTROL VALVE OPERATION
 - A. WARNING DO NOT CONNECT VALVE COIL DIRECTLY TO BATTERY/POWER SUPPLY VOLTAGE.
 - B. OPERATION TO BE PERFORMED WITH ONLY TWIN DISC CONTROL SYSTEMS OR MODULES.
 2. MANUAL OVERRIDE VALVE OPERATION
 - A. THE MANUAL OVERRIDE FEATURE FOR THE PRIMARY AND SECONDARY SOLENOIDS MUST NEVER BE ENGAGED SIMULTANEOUSLY.
 - B. ROTATE THE MANUAL OVERRIDE SCREW COUNTERCLOCKWISE UNTIL THE SCREWS STOPS FOR THE NEUTRAL POSITION
 - C. THE MANUAL OVERRIDE SCREWS FOR BOTH THE PRIMARY AND SECONDARY SOLENOID MUST BE IN THE NEUTRAL POSITION TO OPERATE THE VALVE UTILIZING THE TWIN DISC CONTROL SYSTEM.
 - D. TO ENGAGE PRIMARY CLUTCH TURN THE PRIMARY OVERRIDE SCREW IN A CLOCKWISE DIRECTION UNTIL THE SCREW STOPS TURNING.
 - E. TO ENGAGE SECONDARY CLUTCH TURN THE SECONDARY OVERRIDE SCREW IN A CLOCKWISE DIRECTION UNTIL THE SCREW STOPS TURNING.
 3. REFERENCE S930 FOR TWIN DISC REQUIREMENTS FOR PRESSURE AND TEMPERATURE ALARM LEVELS.
 4. ALL POINTS AVAILABLE FOR TESTING ARE CODED
- 



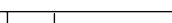

SECTION A-A



VIEW B-B

EQUIPMENT SHOWN:

- MGX-5075A PER PX12610 ASSEMBLY
- SAE # 2 - SAE 290 - VKE-3411-S
- GP VALVE WITH EC050 - E-TROLL VOLVO EVC-E3 MODULE
- SAE #4 OUTPUT FLANGE

FIRST USE/ASSEMBLY:PX12610		WEIGHT: 140 _{kg}		MATERIAL:		DATE: 10/30/2017	
10/30 USE MODEL: MGX-5075A		WR: _{kg-m²}		THIRD ANGLE PROJECTION		SCALE:	
SIMILAR TO:		METRIC	HEAT TREAT:		1:4	DRAWN BY: LT	PX1031577B
			UNLESS OTHERWISE SPECIFIED MACHINED DIMENSIONS X ±0.75 X X ±0.25 X X X ±0.13		DESCRIPTION:		
NOTICE: THIS PRINT CONTAINS PROPRIETARY INFORMATION AND IS NOT TO BE USED FOR ANY OTHER PROJECT WITHOUT THE INTEREST OF TWIN DISC, INCORPORATED		ALL ANGLE TOLERANCES ±1°		GEOMETRIC TOLERANCING PER ASME Y14.5M 1994		APPROVED BY: DV	DWG SIZE: A1
THIS DRAWING IS NOT INTENDED TO REPLACE ANY CONTRACT GRANTED TO THE GOVERNMENT OR OTHER BY CONTRACT.				INSTALLATION MGX-5075A		SHEET: 1 OF 1	REV: -