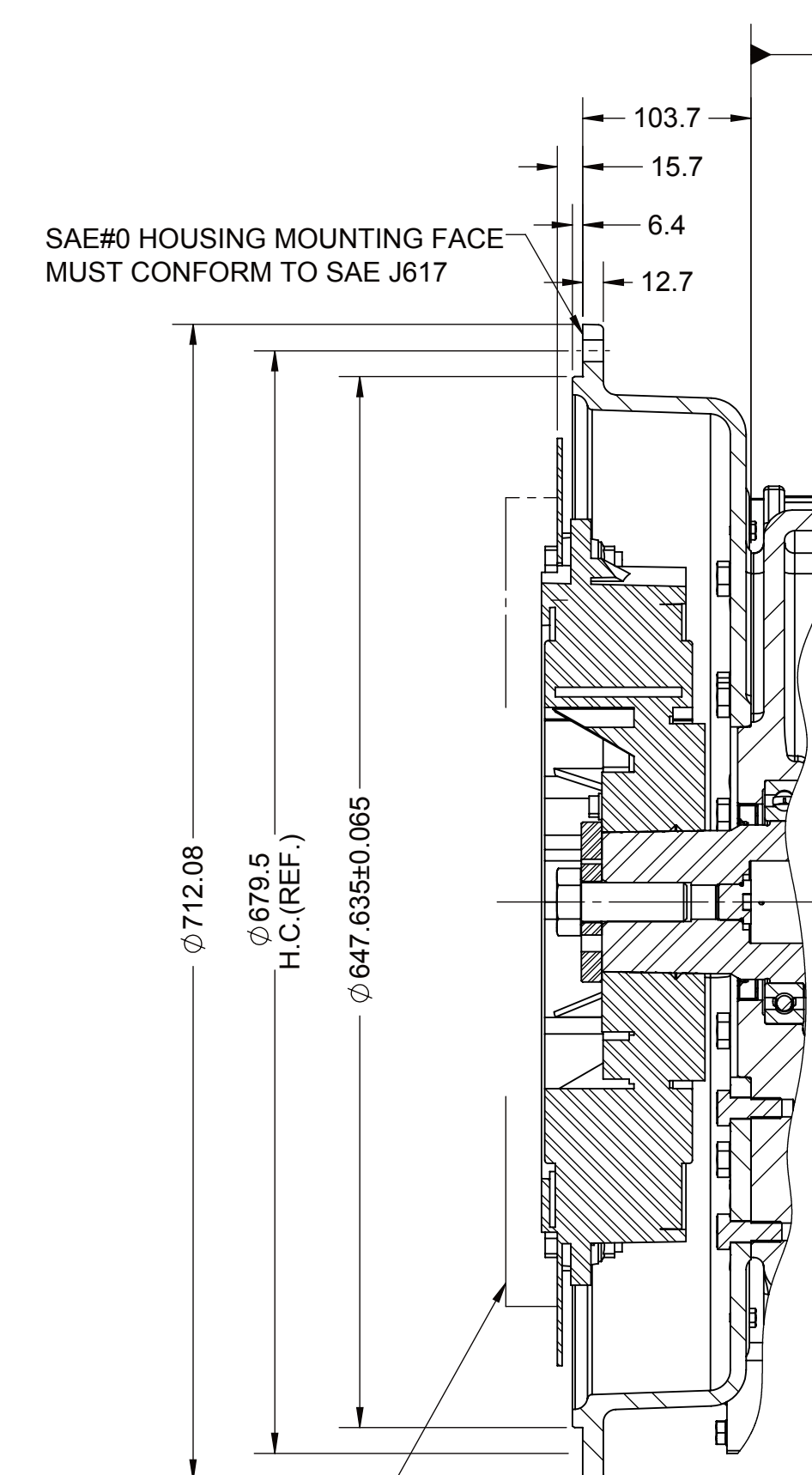
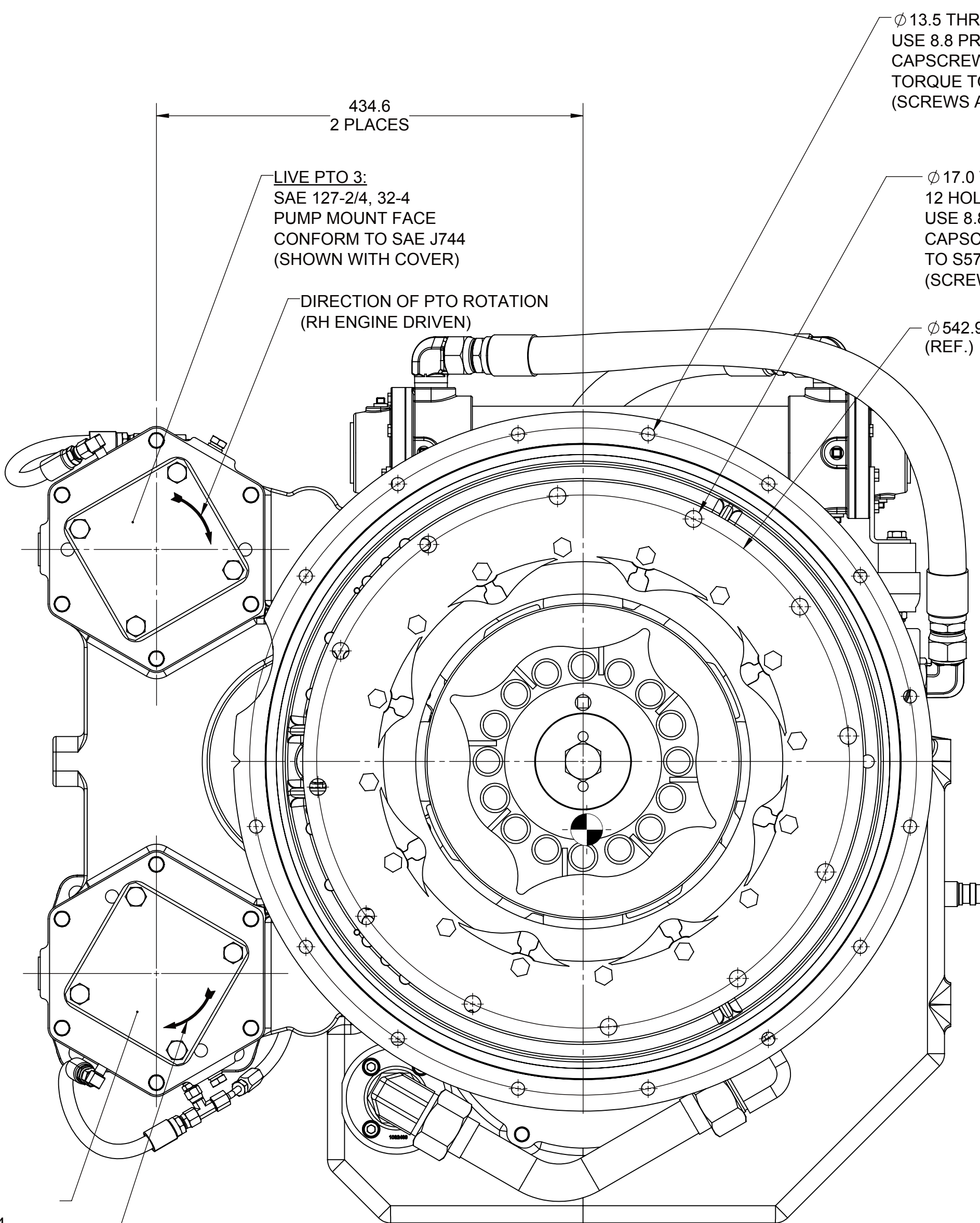


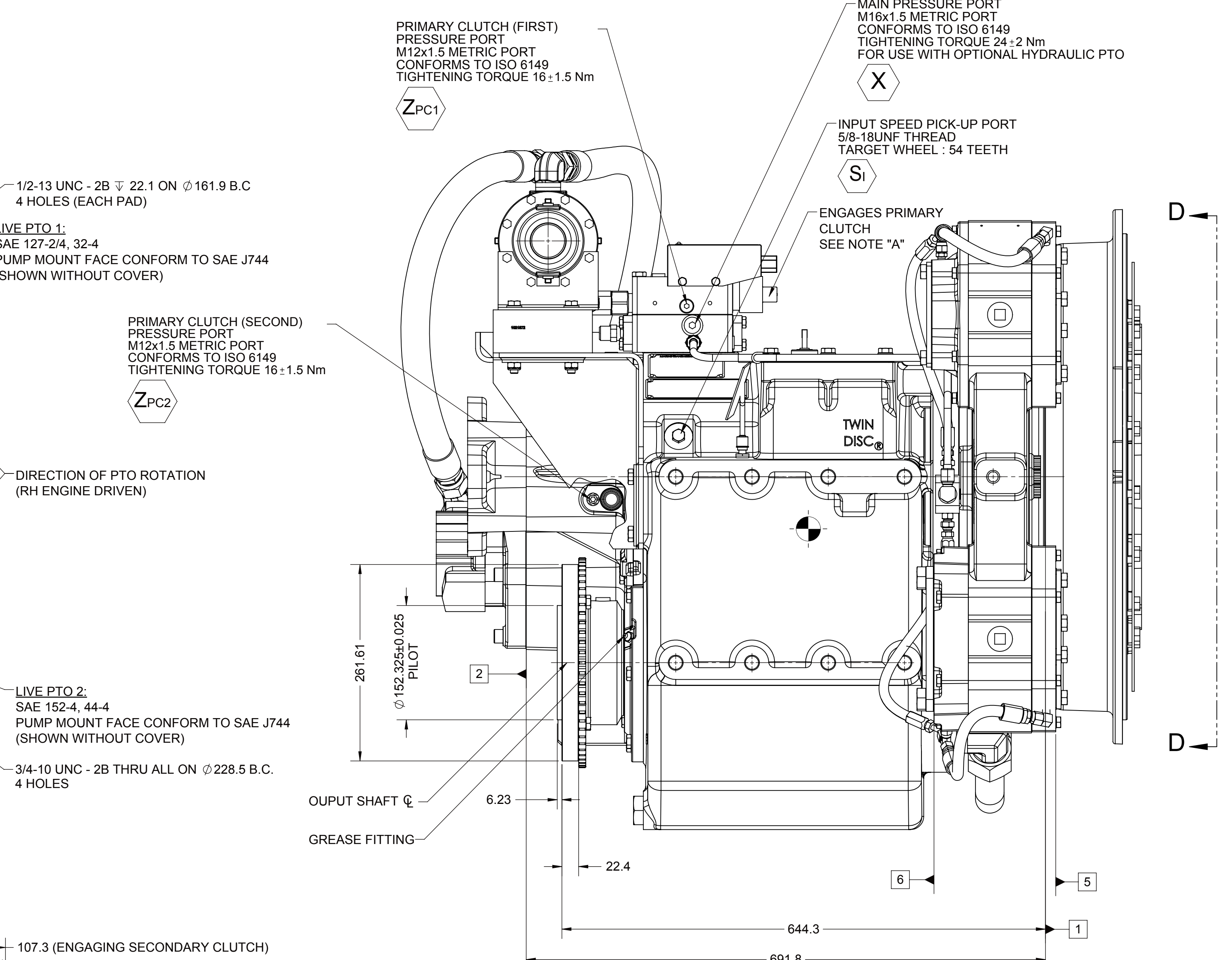
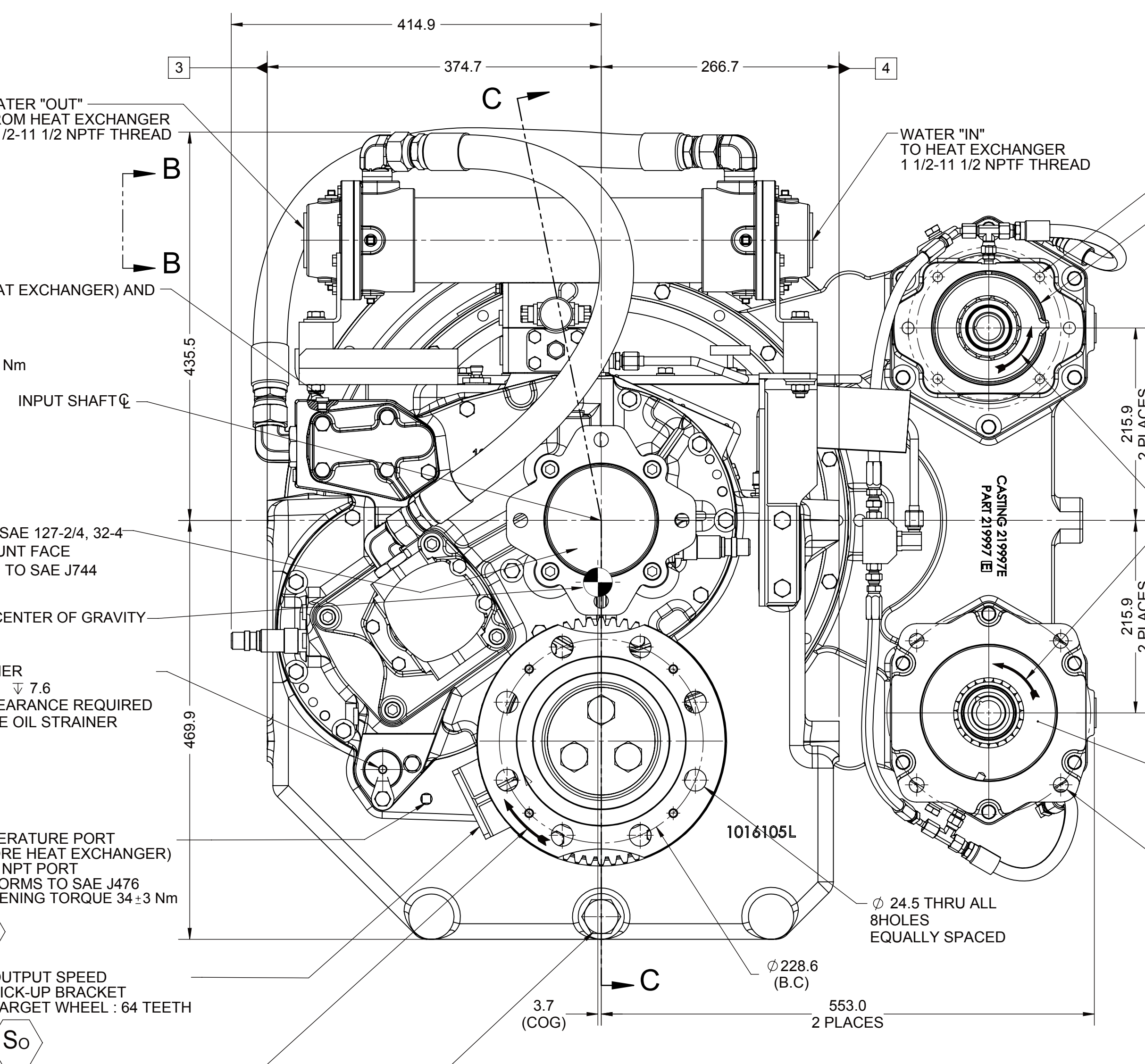
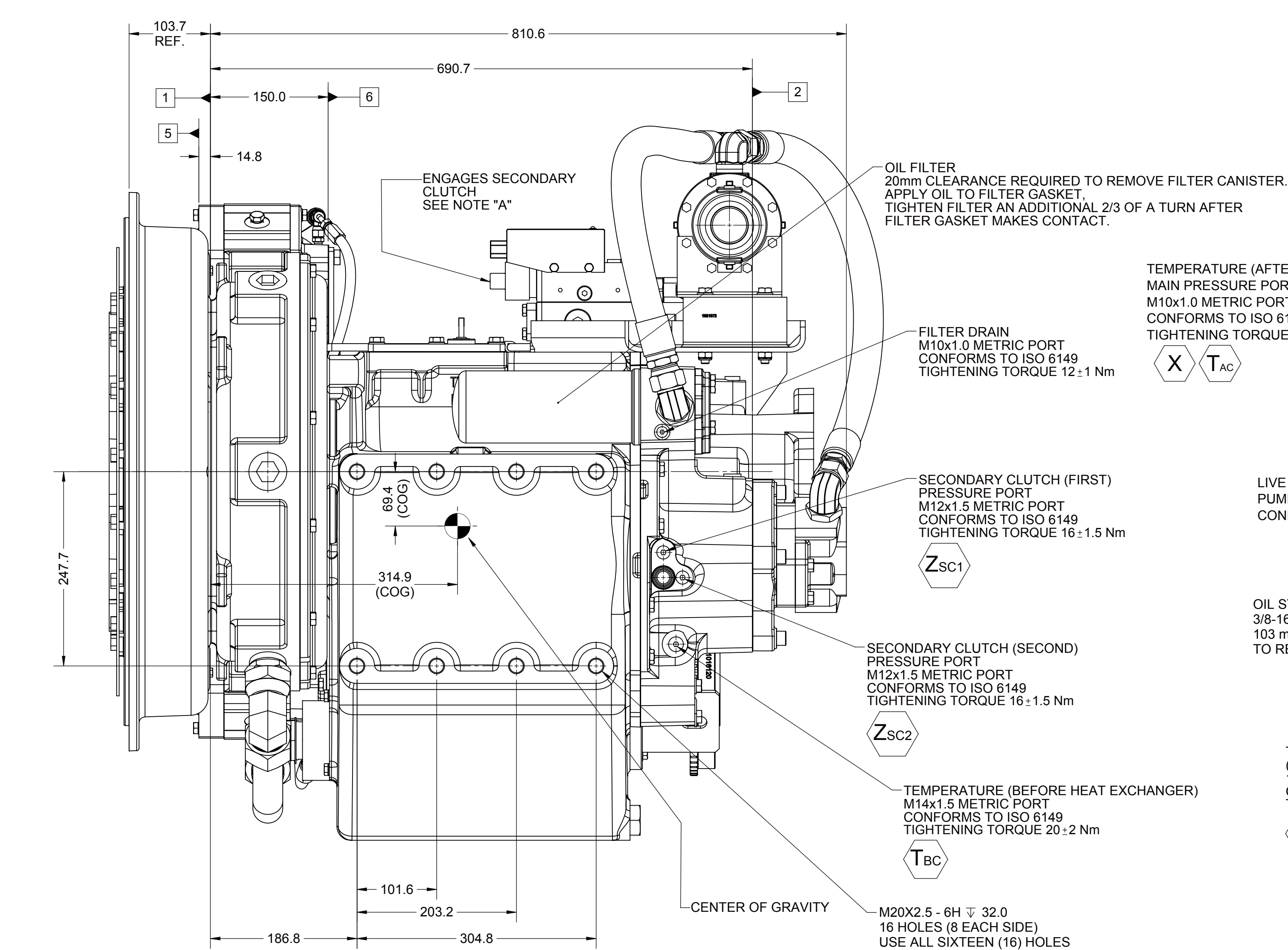
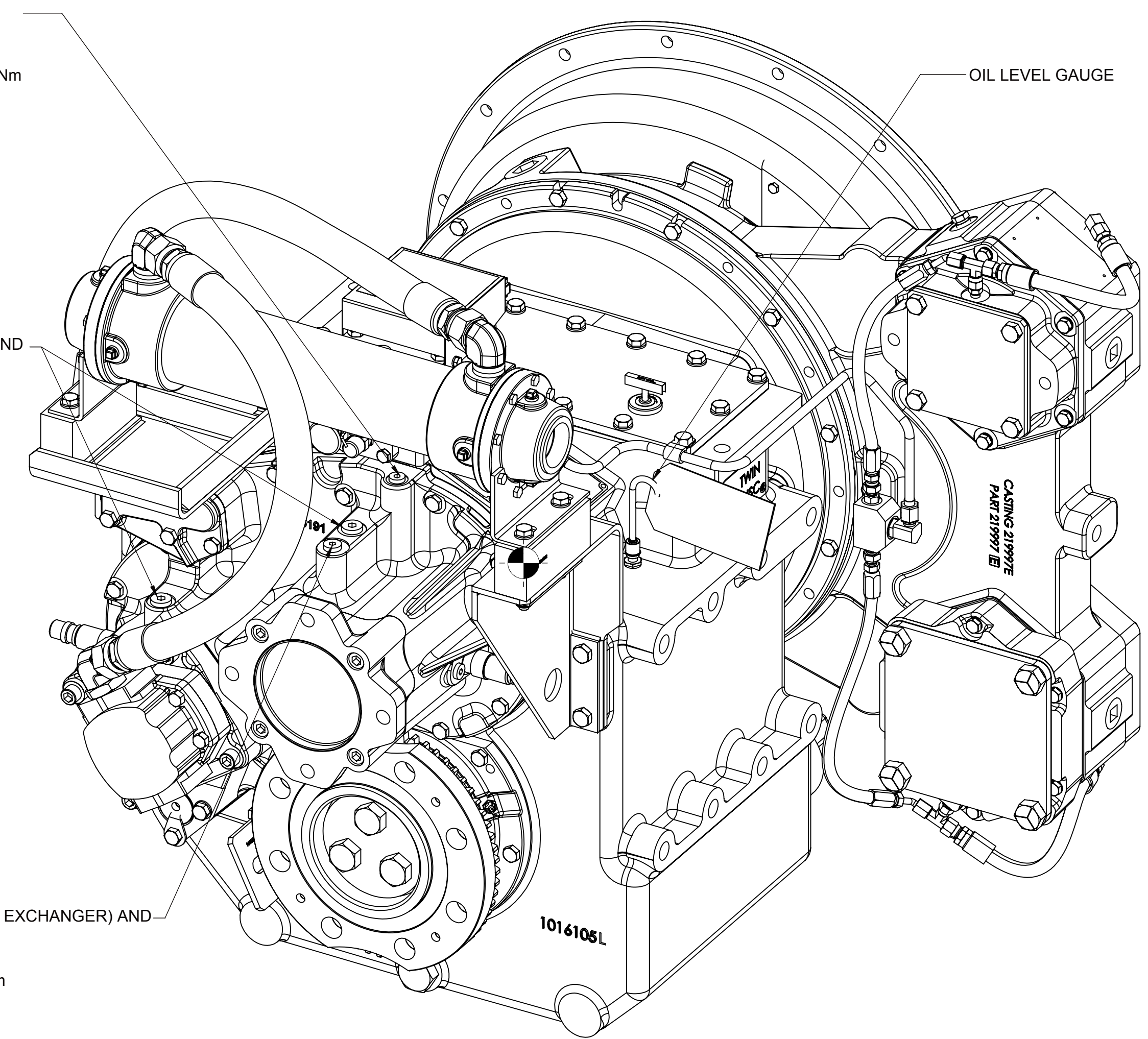
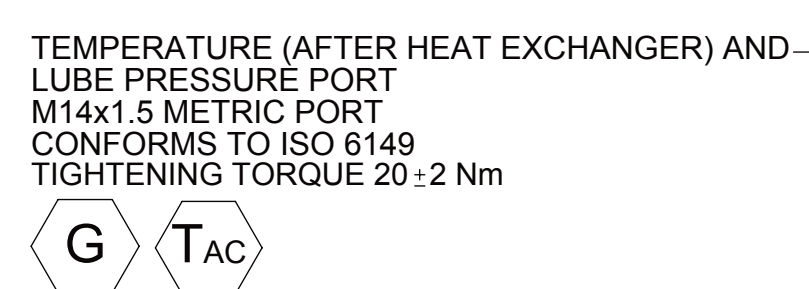
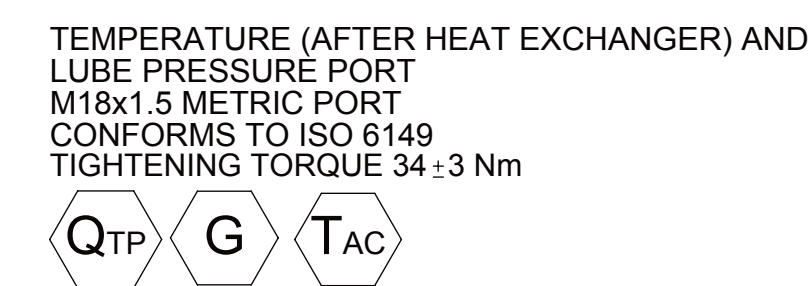
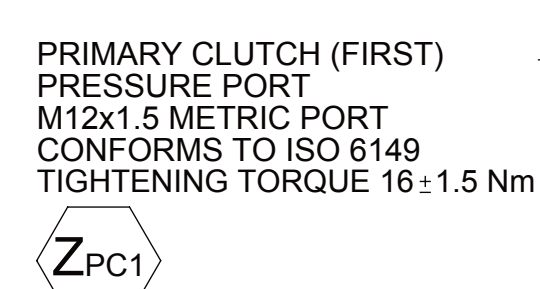
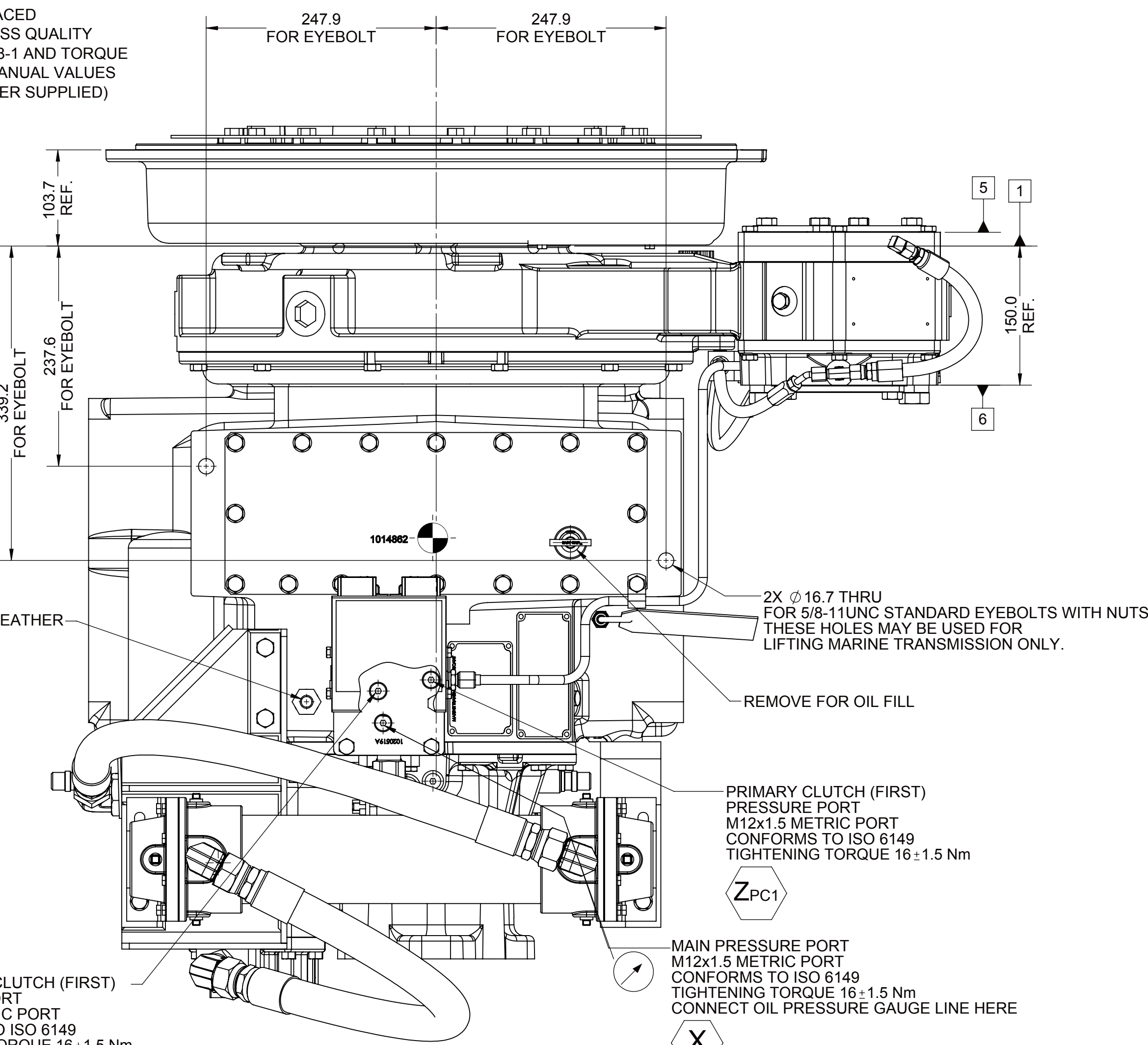
- | | |
|---|--|
| 1 | INPUT GROUP REFERENCE PLANE |
| 2 | PTO GROUP MOUNTING FACE |
| 3 | LEFT MOUNTING BRACKET FACE |
| 4 | RIGHT MOUNTING BRACKET FACE |
| 5 | LIVE PTO PUMP MOUNTING FACE (2 PLACES) |
| 6 | LIVE PTO PUMP MOUNTING FACE (2 PLACES) |




SECTION C-C

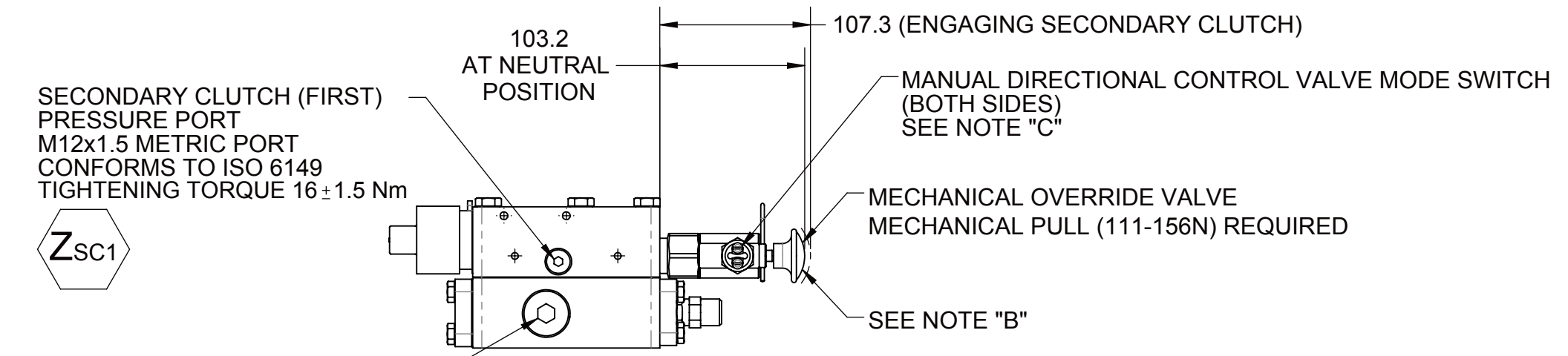


VIEW D-D



NOTES:


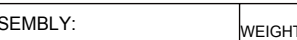
- A. PROPORTIONAL CONTROL VALVE OPERATION
1. WARNING DO NOT CONNECT VALVE COIL DIRECTLY TO BATTERY/POWER SUPPLY VOLTAGE.
2. OPERATION TO BE PERFORMED WITH ONLY TWIN DISC CONTROL SYSTEMS OR MODULES.
- B. MANUAL DIRECTIONAL CONTROL VALVE OPERATION
1. WITH MANUAL DIRECTIONAL CONTROL VALVE IN NEUTRAL POSITION, PULL TO ENGAGE SECONDARY CLUTCH.
2. THE MANUAL DIRECTIONAL CONTROL VALVE CANNOT ENGAGE THE PRIMARY CLUTCH.
- C. MANUAL DIRECTIONAL CONTROL VALVE MODE SWITCH
1. SWITCH IS NORMALLY CLOSED WHEN MANUAL DIRECTIONAL CONTROL VALVE IS IN THE NEUTRAL POSITION AND OPEN WHEN LEVER IS ACTUATED FROM NEUTRAL POSITION.
2. CURRENT = 20 amp Max.
3. FOR WIRING SCHEMATIC, REFER TO CONTROL MODULE DRAWING.
- D. REFERENCE S930 FOR TWIN DISC REQUIREMENTS FOR PRESSURE AND TEMPERATURE ALARM LEVELS.
- E. ALL POINTS AVAILABLE FOR TESTING CODED 
- F. UNLESS OTHERWISE SPECIFIED FASTENER TORQUE VALUES AS PER S574 STANDARD



VIEW B-E

EQUIPMENTS SHOWN:

- MGXT-5202SC PER ASSEMBLY S1033400
- SAE#0 HOUSING ADAPTER
- SAE460 CENTA CF-R-318-HP INPUT COUPLING
- GP VALVE WITH EC050 PROFILE MODULE
- LIVE SAE J744 127-2/4, 32-4 PTO
- MOUNTED M1959AL HEAT EXCHANGER (RAW WATER)
- PUMP TOWER EQUIPPED WITH QTY 3 SIZE 127-2/4, 32-4
- QTY 1 SIZE 152-4, 44-4 LIVE PTO PUMP PADS PER SAE J744.

						+ NDWF-3000201 05/25/2017	
				REV		CHANGE NO.	DATE
FIRST USE ASSEMBLY: HEX-01 697-01						THIRD ANGLE PROJECTION	
FIRST USE MODEL: W67 kg/m				MATERIAL:		DATE: 05/25/2017	
SIMILAR TO:				HEAT TREAT:		SCALE: 1:1	
				DESCRIPTION:		DRAWN BY: PM	
UNLESS OTHERWISE SPECIFIED NOMINAL DIMENSIONS ARE IN MILLIMETERS (INCHES) X X X ALL ANGULAR TOLERANCES ±1° DIMENSIONS ARE TRUNCATED PER ASME Y14.5-1994				INSTALLATION MGXT-5022SC		CHECKED BY: PM	
METRIC: THIS DRAWING IS FOR METRIC DIMENSIONS NOT TO BE USED AS A DRAWING OF RECORD. THIS DRAWING IS FOR TWIN DISC, INCORPORATED. THE INTEREST OF TWIN DISC, INCORPORATED IS RESERVED. GRANTED TO THE U.S. GOVERNMENT BY CONTRACT						APPROVED BY: JMF	
						DIM: 5022SC	
						A0	
						SHEET: 1 OF 1	
						REV: A	