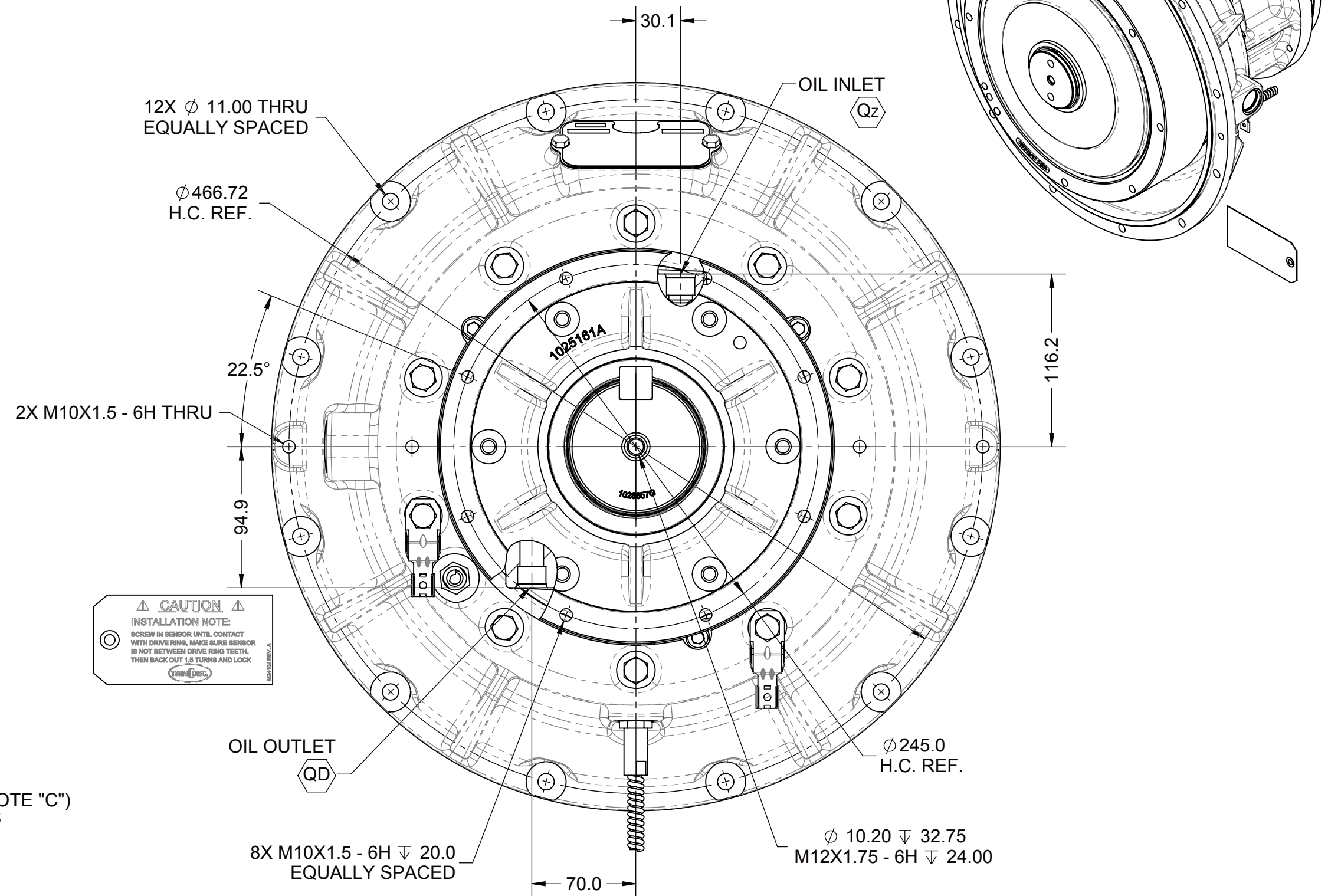



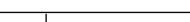

SECTION A-A



- 1 INPUT MOUNTING FACE AND REFERENCE PLANE
2 SUPPORT PLATE MOUNTING FACE

NOTES:

- A. ALL POINTS AVAILABLE FOR TESTING ARE CODED 
- B. REFER TO MANUAL FOR RECOMMENDED OIL, CHECKING AND MAINTENANCE PROCEDURES
- C. REPLACE INSTALLATION BOLT (3) BEFORE OPERATING PTO
SEE MANUAL FOR DETAILS

FIRST USE ASSEMBLY:		WEIGHT: 198.38kg		 THIRD ANGLE PROJECTION		MATERIAL:		DATE: 5/7/2018			
FIRST USE MODEL: RC311		WR ² : kg-m ²				HEAT TREAT:		SCALE: 1:3			
SIMILAR TO: PX1032588A				<p>UNLESS OTHERWISE SPECIFIED MACHINED DIMENSIONS</p> <p>X ±0.75 X.X ±0.25 X.XX ±0.13</p> <p>ALL ANGLES TO BE 10° UNLESS OTHERWISE SPECIFIED</p> <p>GEOMETRIC TOLERANCING PER ASME Y14.5M 1994</p>		DESCRIPTION:		DRAWN BY: PUM		PX1032588B	
METRIC						INSTALLATION PTO. RC311P		CHECKED BY: YU			
NOTICE! THIS PRINT CONTAINS PROPRIETARY INFORMATION AND IS NOT TO BE USED IN ANY MANNER DETRIMENTAL TO THE INTEREST OF TWIN DISC, INCORPORATED								APPROVED BY: DAJ		DWG SIZE: A2	
THIS NOTICE IS NOT INTENDED TO NULLIFY OR LIMIT RIGHTS GRANTED TO THE U.S. GOVERNMENT OR OTHERS BY CONTRACT.										SHEET: 1 OF 1 REV: C	

TEST PORTS						
SYMBOL	DESCRIPTION	PORT/ STANDARD	DESCRIPTION	TORQUE	CLEARANCE FOR REMOVAL (mm)	ELECTRICAL CONNECTION
Q _D	FLOW TO SUMP	3/4"-16 UNF-2B / SAE J1926	O-RING PORT	41 ± 5 Nm (30 ± 4 LB-FT)	15	-
Q _Z	FLOW TO CLUTCH	3/4"-16 UNF-2B / SAE J1926	O-RING PORT	41 ± 5 Nm (30 ± 4 LB-FT)	15	-
S _I	INPUT SPEED SENSOR (72 PULSES PER REV.)	5/8"-18 UNF - 2A	-	24.4 ± 2.7 Nm (18 ± 2 LB-FT)	-	DEUTSCH DT04-3P
S _O	OUTPUT SPEED SENSOR (30 PULSES PER REV.)	5/8"-18 UNF - 2A	-	24.4 ± 2.7 Nm (18 ± 2 LB-FT)	-	DEUTSCH DT04-3P