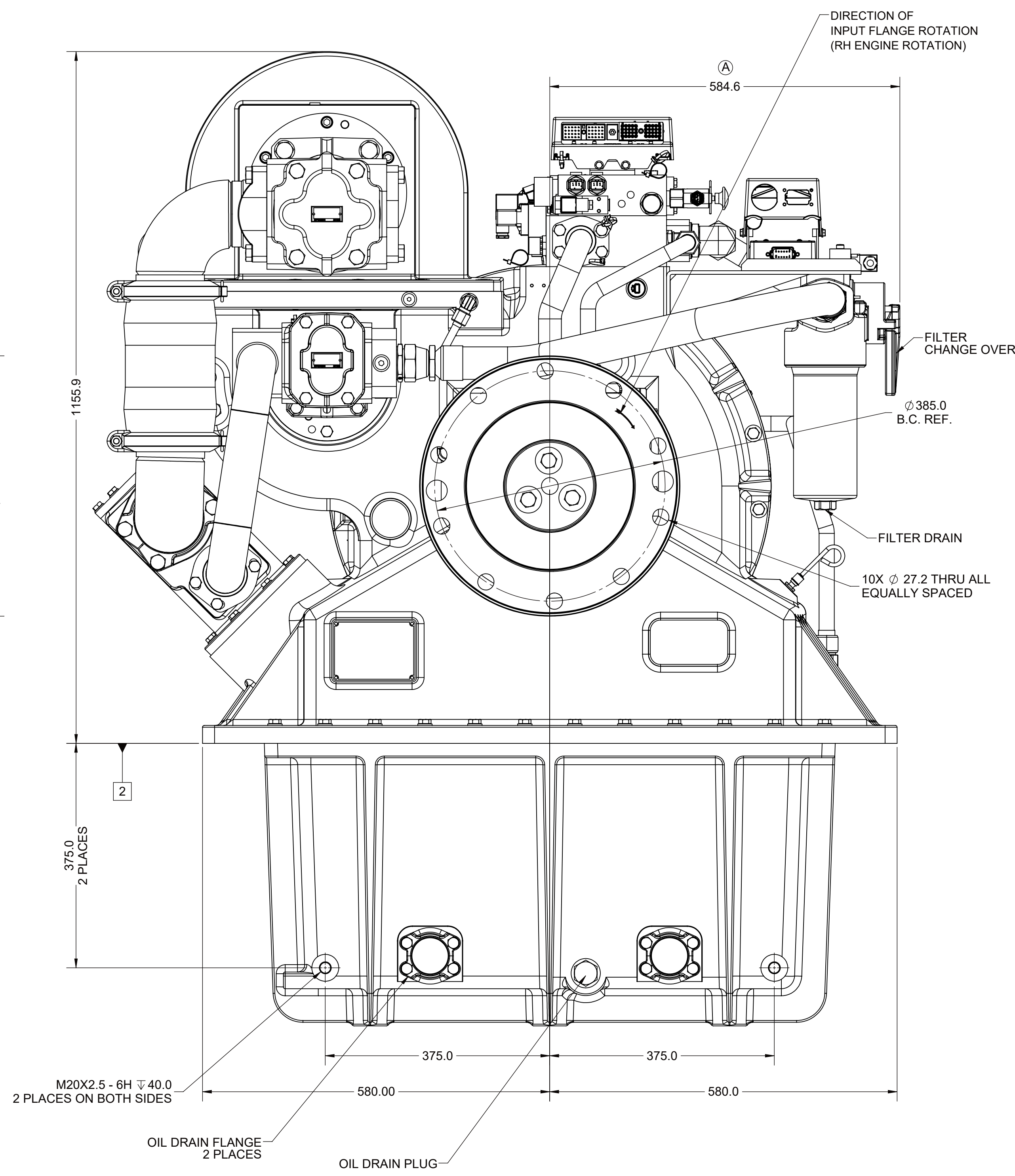
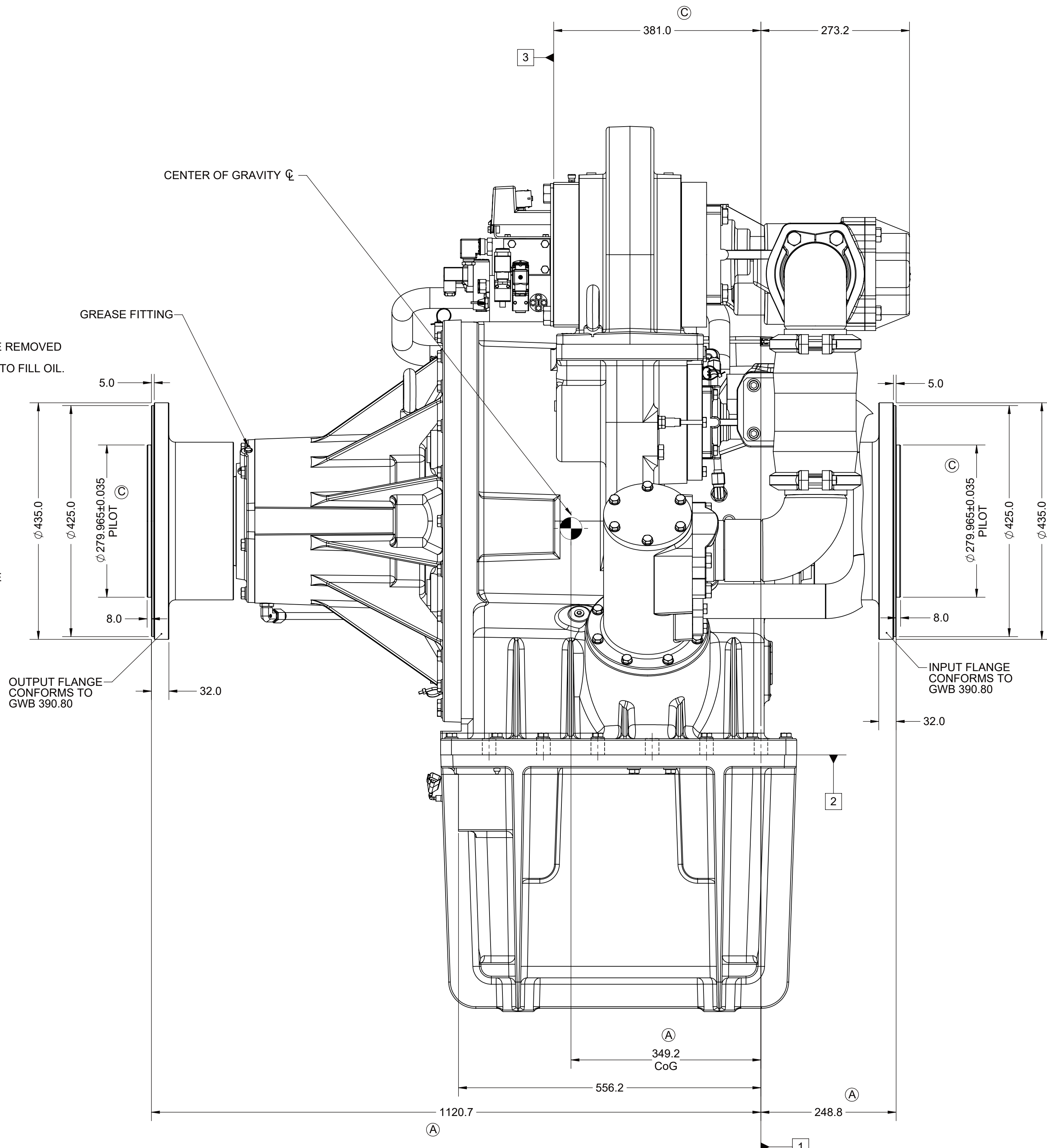
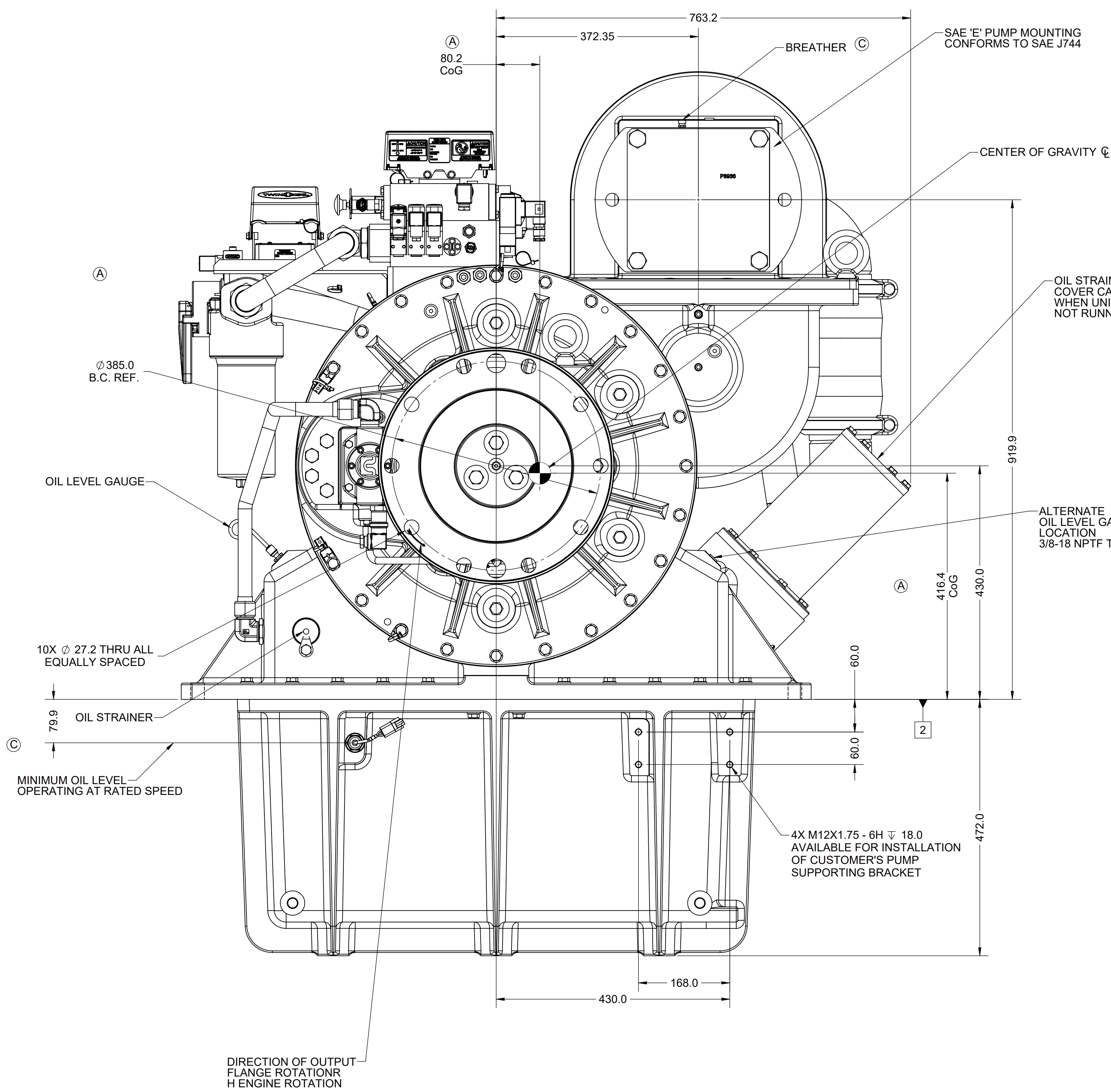
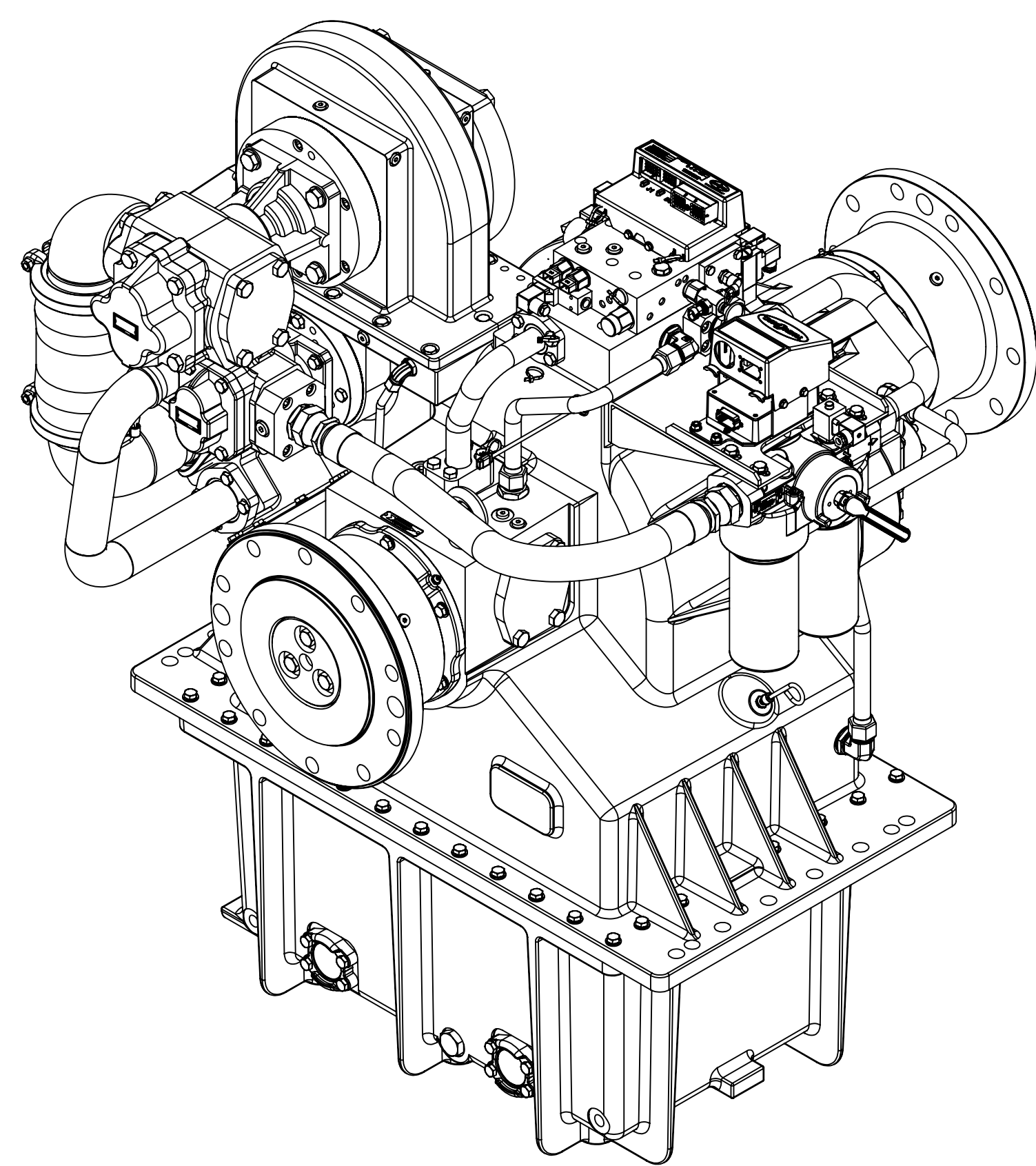
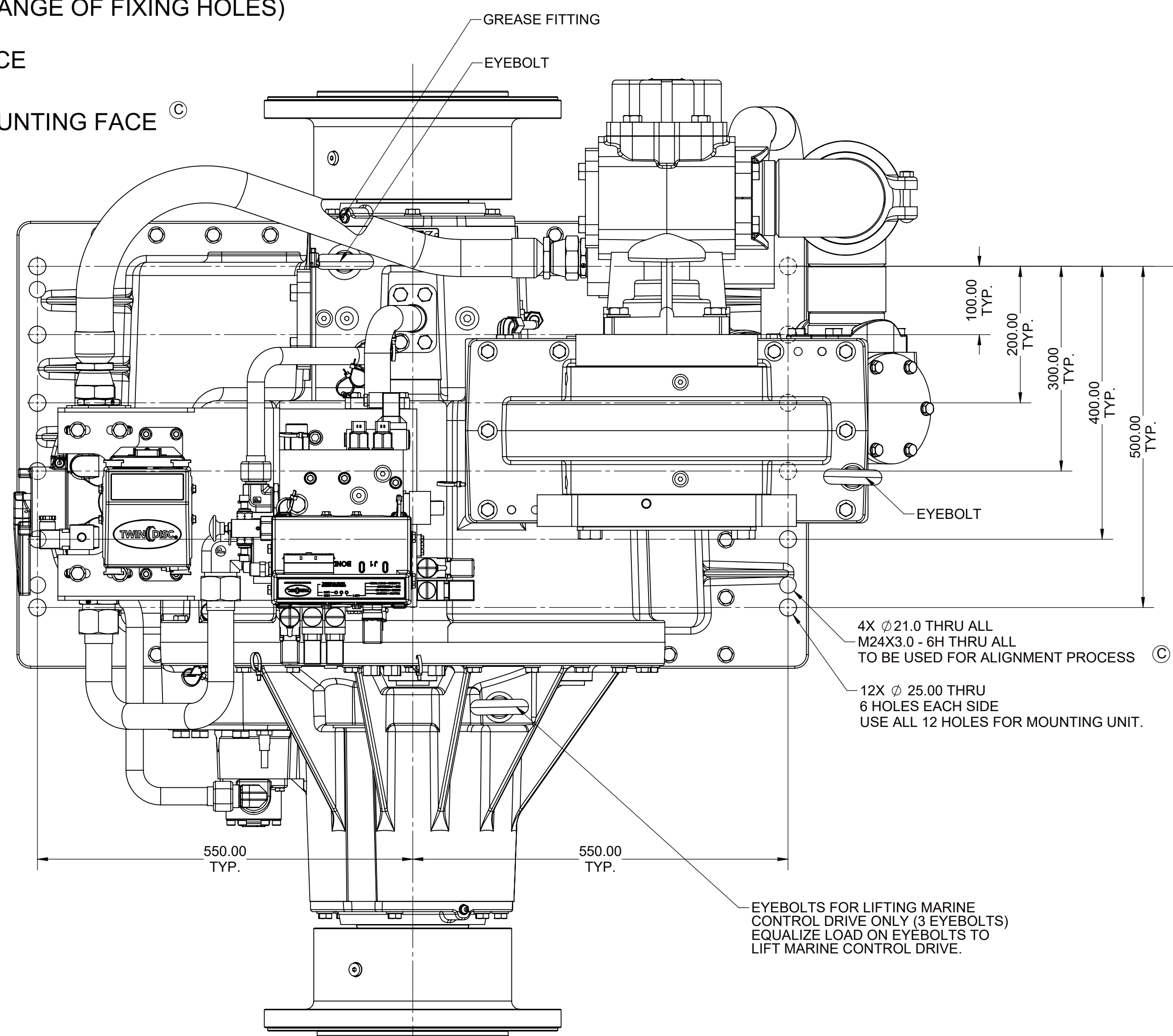


- 1 INPUT GROUP REFERENCE PLANE
(THRU FIRST RANGE OF FIXING HOLES)
- 2 MOUNTING FACE
- 3 PTO PUMP MOUNTING FACE ©



SHEETS	DESCRIPTION
SHEET 1	CUSTOMER INTERFACE AND INSTALLATION DIMENSIONS
SHEET 2	ELECTRIC, HYDRAULIC CONNECTIONS AND TEST PORTS LOCATIONS
SHEET 3	SERVICE POINT AND SERVICE CLEARANCE REQUIREMENTS

EQUIPMENT SHOWN:

- MCD-4000-HD PER PX1032200 ASSEMBLY
- PX1032338A INPUT GROUP
- PX1032339A OUTPUT GROUP
- PX1032341A MAIN PUMP GROUP
- PX1032342 LUBE PUMP GROUP
- PX1032343 PTO RATIO GROUP
- LIVE SAE E PTO OPTION
- PX1032345 TRAILING PUMP GROUP

FIRST USE ASSEMBLY: PX1032200
FIRST USE MODEL: MCD-4000-HD
SIMILAR TO:

METRIC

UNLESS OTHERWISE SPECIFIED
MACHINED DIMENSIONS
X ±0.75
Y ±0.25

MATERIAL

HEAT TREAT

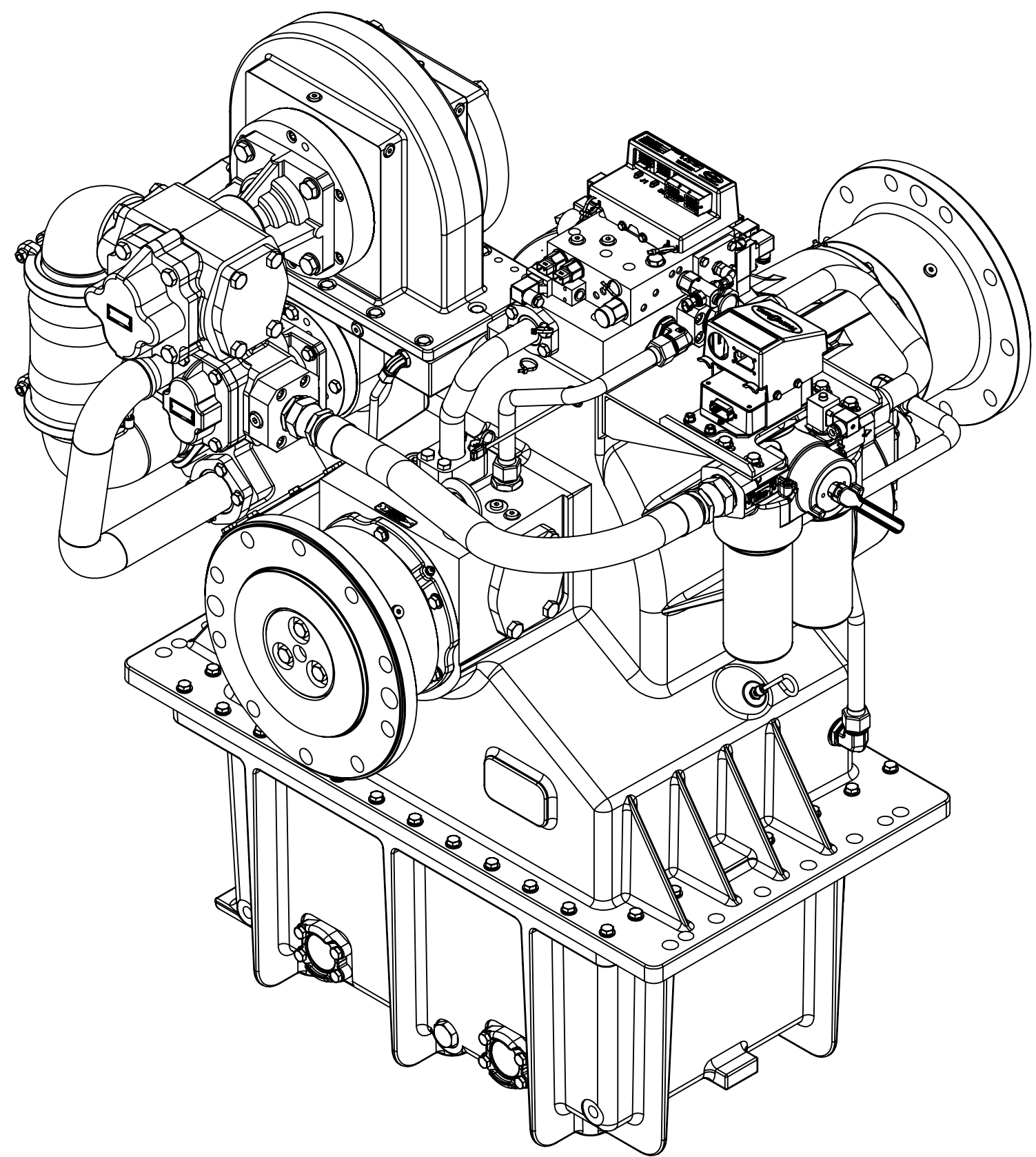
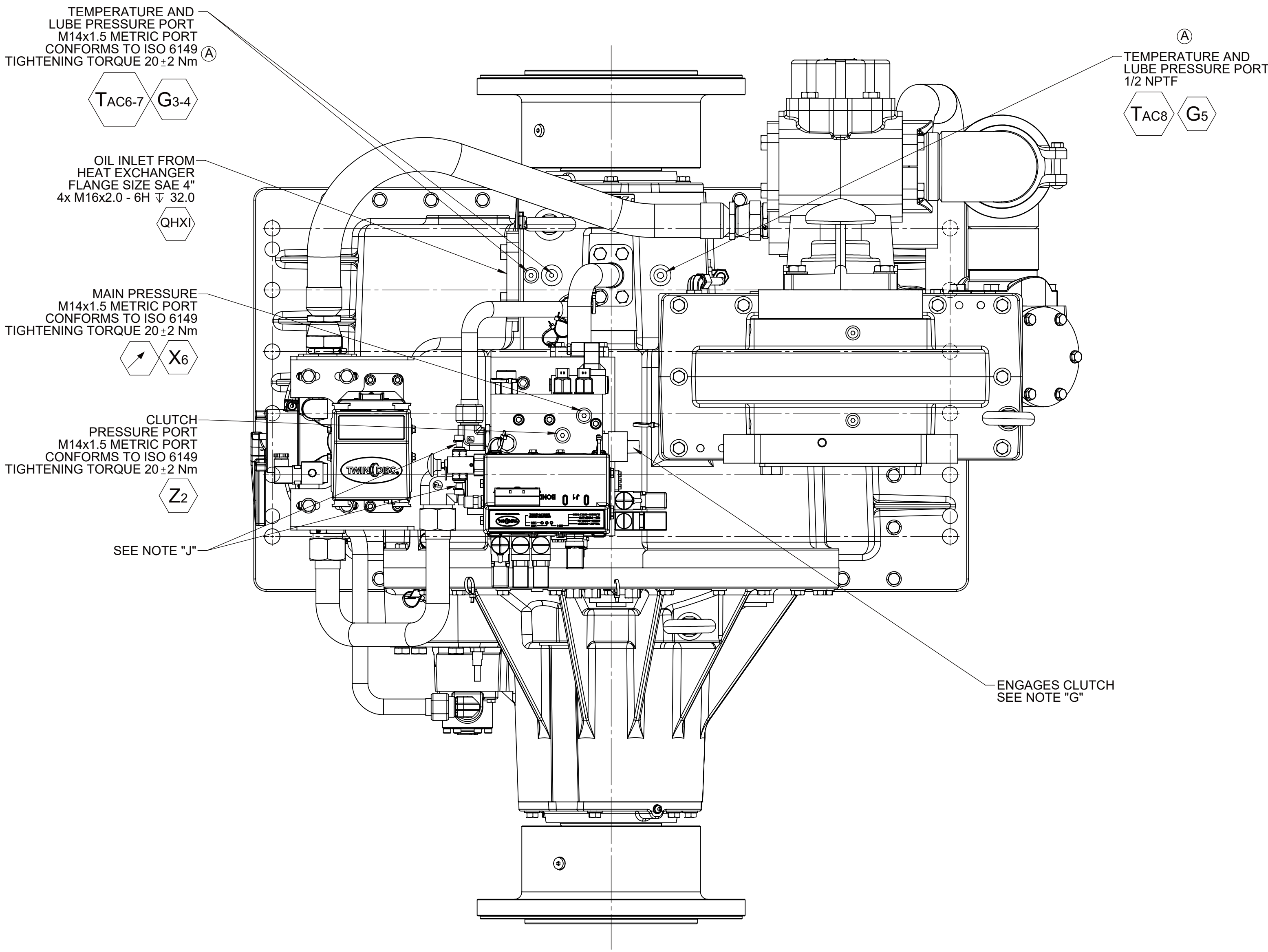
DAY	06
SC	

DR

17

4103

0

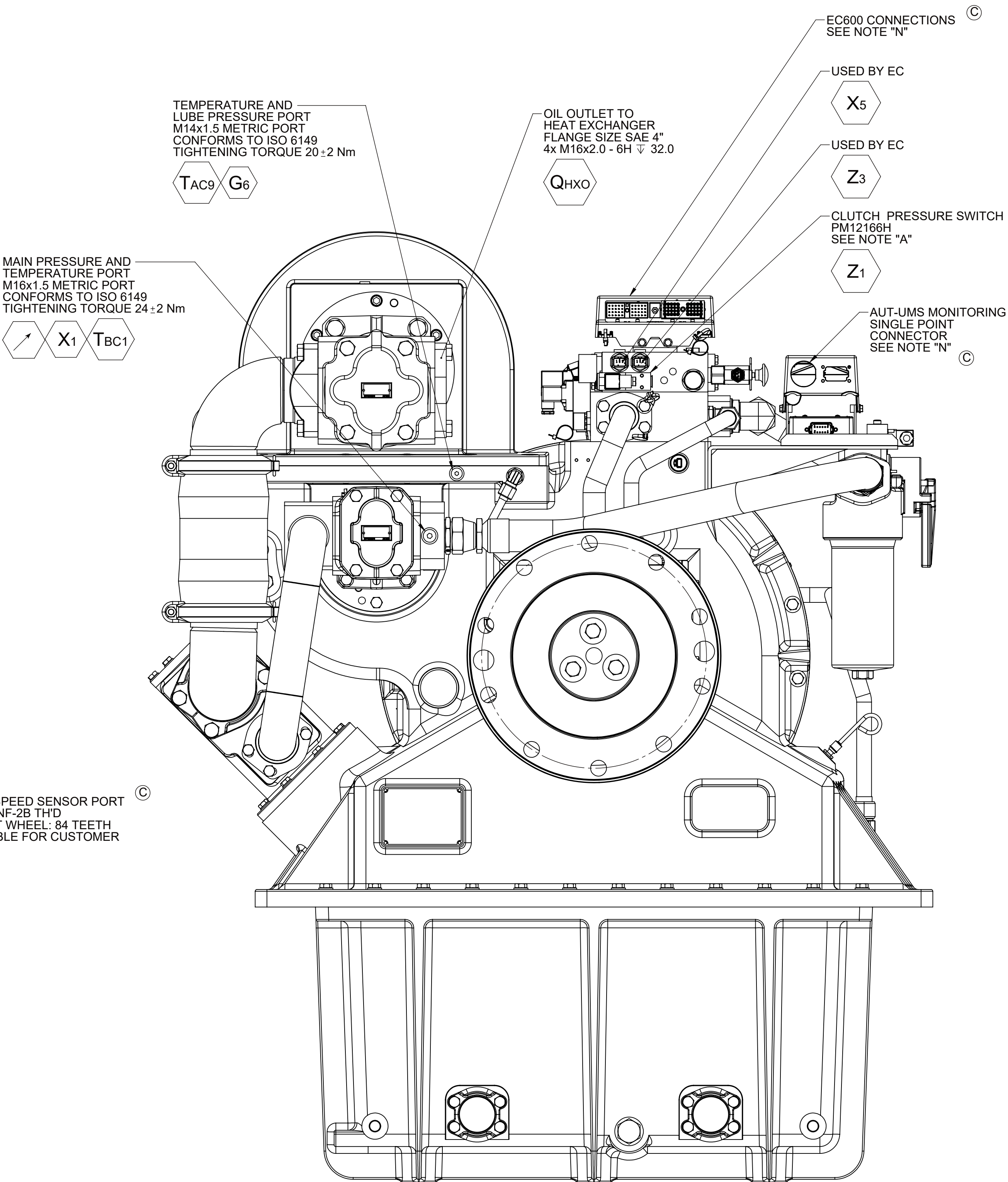
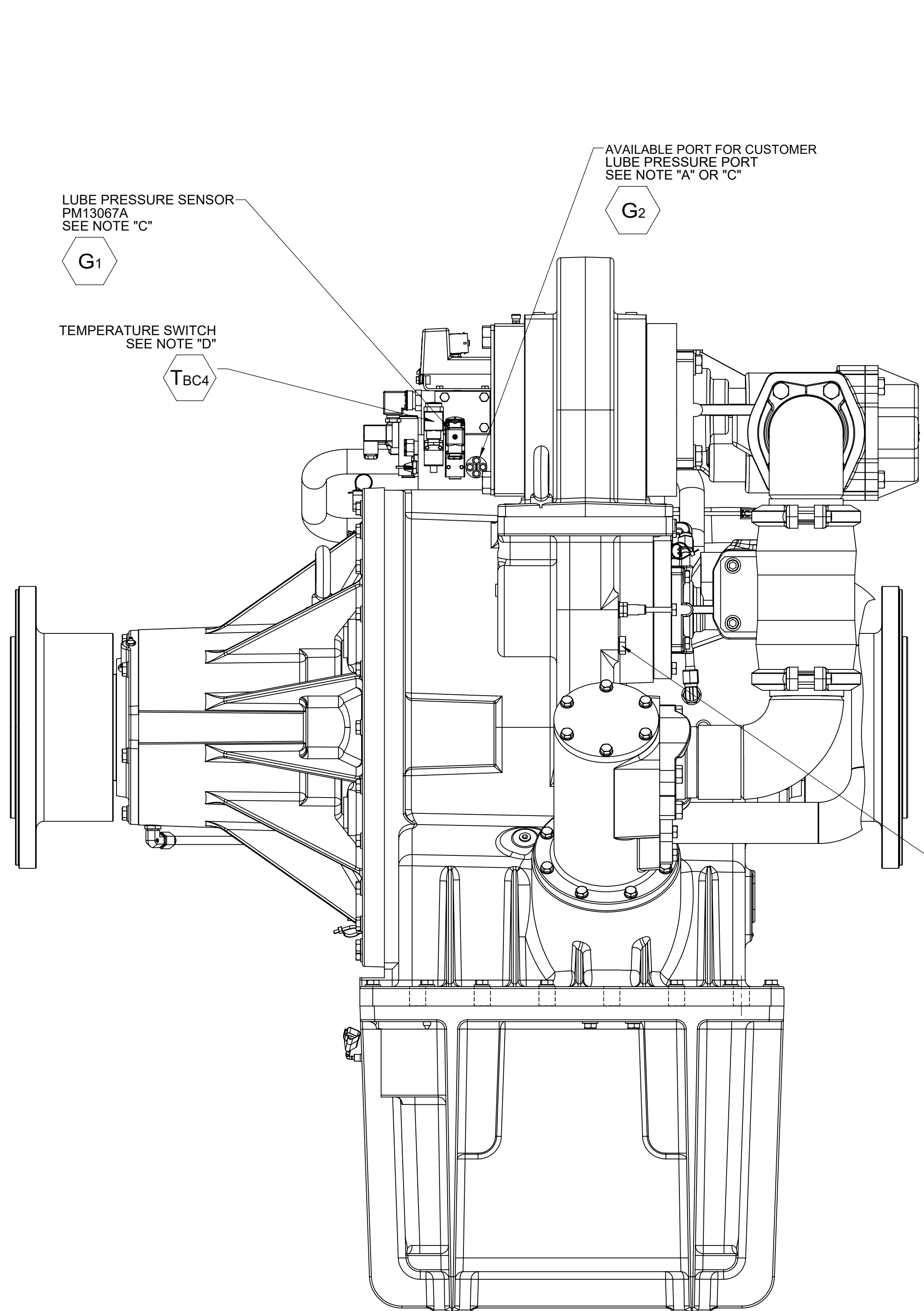
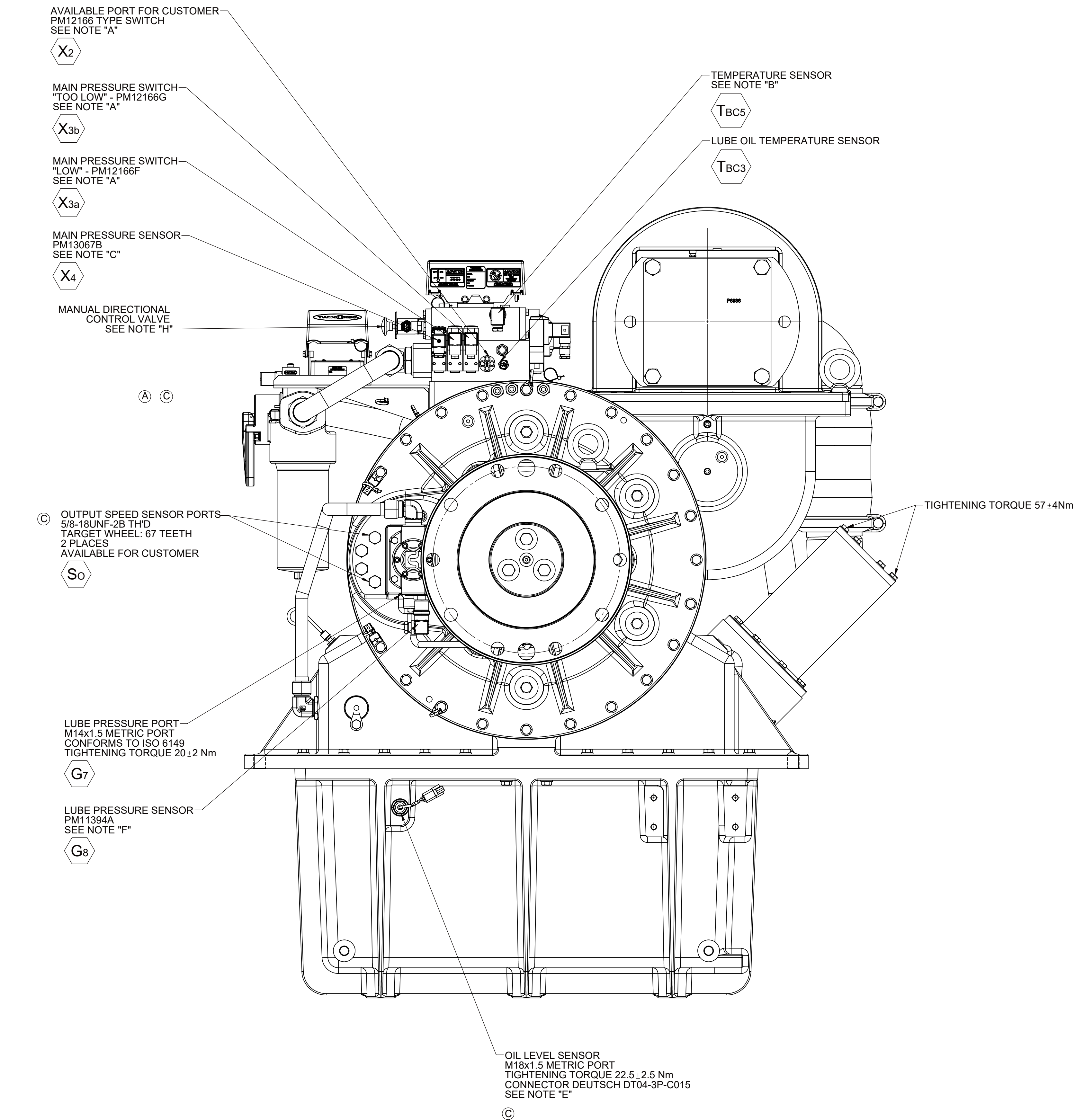


HYDRAULIC AND ELECTRICAL CONNECTION NOTES:

- A. INFORMATION FOR PM12166 PRESSURE SWITCHES
- PRESSURE SETPOINT:
 - PM12166F - LOW: 15.8 bar FALLING
 - PM12166G - TOO LOW: 14.4 bar FALLING
 - OPERATING VOLTAGE: 24 VDC
 - WORKING TEMP. -40°C TO +85°C
 - TIGHTENING TORQUE: 25 Nm
 - THE SWITCH IS OPEN WHEN CLUTCH ENGAGEMENT PRESSURE IS NOT APPLIED.
 - THE SWITCH IS CLOSED WHEN CLUTCH ENGAGEMENT PRESSURE IS APPLIED.
- B. INFORMATION FOR PM11395 TEMPERATURE SENSOR:
- TYPE: PT-1000-3 WIRE
 - WORKING TEMP. -50°C TO +200°C
 - TIGHTENING TORQUE: 25 Nm
- C. INFORMATION FOR PM13067 PRESSURE SENSORS:
- SUPPLY VOLTAGE: 24 VDC
 - PRESSURE RANGE:
 - PM13067A 0 kPa TO 1000 kPa
 - PM13067B 0 kPa TO 3000 kPa
 - OUTPUT CURRENT: 4 mA TO 20 mA
 - TIGHTENING TORQUE: 25 Nm
- D. INFORMATION FOR PM12168B TEMPERATURE SWITCH:
- SUPPLY VOLTAGE: 24 VDC
 - TEMPERATURE RANGE: 70°C TO 120 °C
 - TEMPERATURE SET POINT: 95°C RISING
 - THE SWITCH IS OPEN WHEN TEMPERATURE IS < 95°C
 - THE SWITCH IS CLOSED WHEN TEMPERATURE REACHES 95°C

- E. INFORMATION FOR 1029928 OIL LEVEL SENSOR:
- SUPPLY VOLTAGE: 24 VDC
 - TIGHTENING TORQUE: 25 Nm MAX
- F. INFORMATION FOR PM11394A PRESSURE SENSORS:
- SUPPLY VOLTAGE: 24 VDC
 - PRESSURE RANGE: 0 kPa TO 1000 kPa
 - OUTPUT CURRENT: 4 mA TO 20 mA
 - TIGHTENING TORQUE: 35 Nm MAX.
- G. PROPORTIONAL CONTROL VALVE OPERATION
1. WARNING DO NOT CONNECT VALVE COIL DIRECTLY TO BATTERY/POWER SUPPLY VOLTAGE.
 2. OPERATION TO BE PERFORMED WITH ONLY TWIN DISC CONTROL SYSTEMS OR MODULES.
- H. MANUAL DIRECTIONAL CONTROL VALVE OPERATION
- WITH MANUAL DIRECTIONAL CONTROL VALVE IN CENTERED POSITION, PULL TO ENGAGE CLUTCH.
- J. MANUAL DIRECTIONAL CONTROL VALVE MODE SWITCH
1. SWITCH IS NORMALLY CLOSED WHEN MANUAL DIRECTIONAL CONTROL VALVE IS IN THE CENTERED POSITION AND OPEN WHEN LEVER IS ACTUATED FROM CENTERED POSITION.
 2. CURRENT = 20 AMP MAX.
 3. FOR WIRING SCHEMATIC, REFER TO CONTROL MODULE DRAWING.
- K. ALL POINTS AVAILABLE FOR TESTING ARE CODED ○.
- L. UNLESS OTHERWISE SPECIFIED, FASTENER TORQUE VALUES AS PER S574 STANDARD.
- M. REFERENCE S930 FOR TWIN DISC REQUIREMENTS FOR PRESSURE AND TEMPERATURE ALARM LEVELS.
- N. REFER TO BELOW TABLE FOR SYSTEM DRAWING AND WIRING SCHEMATIC.

CONTROL & DISPLAY GROUP	SYSTEM DRAWING	WIRING SCHEMATIC
PX1039400	PX1038897	PX1034262
PX1039445	PX1039549	PX1039563
PX1039755	PX1039650	PX1039564



1. INFORMATION PRESENTED ON THIS SHEET PERTAIN TO CLEARANCE REQUIREMENTS TO SERVICE THE NOTED COMPONENT.
2. REFER TO SERVICE MANUAL 1033754 FOR ADDITIONAL INSTRUCTIONS AND PRECAUTIONS WHEN SERVICING THE PRODUCT.



REMOVE 3 PLUGS
USE THE 3 COME HOME SCREWS
USE AN EXTERNAL HEX KEY OF 8mm ACROSS FLAT
MAX TIGHTENING TORQUE PER SCREW: 100 Nm
MAX INPUT POWER LIMITED TO 40% OF RATED POWER