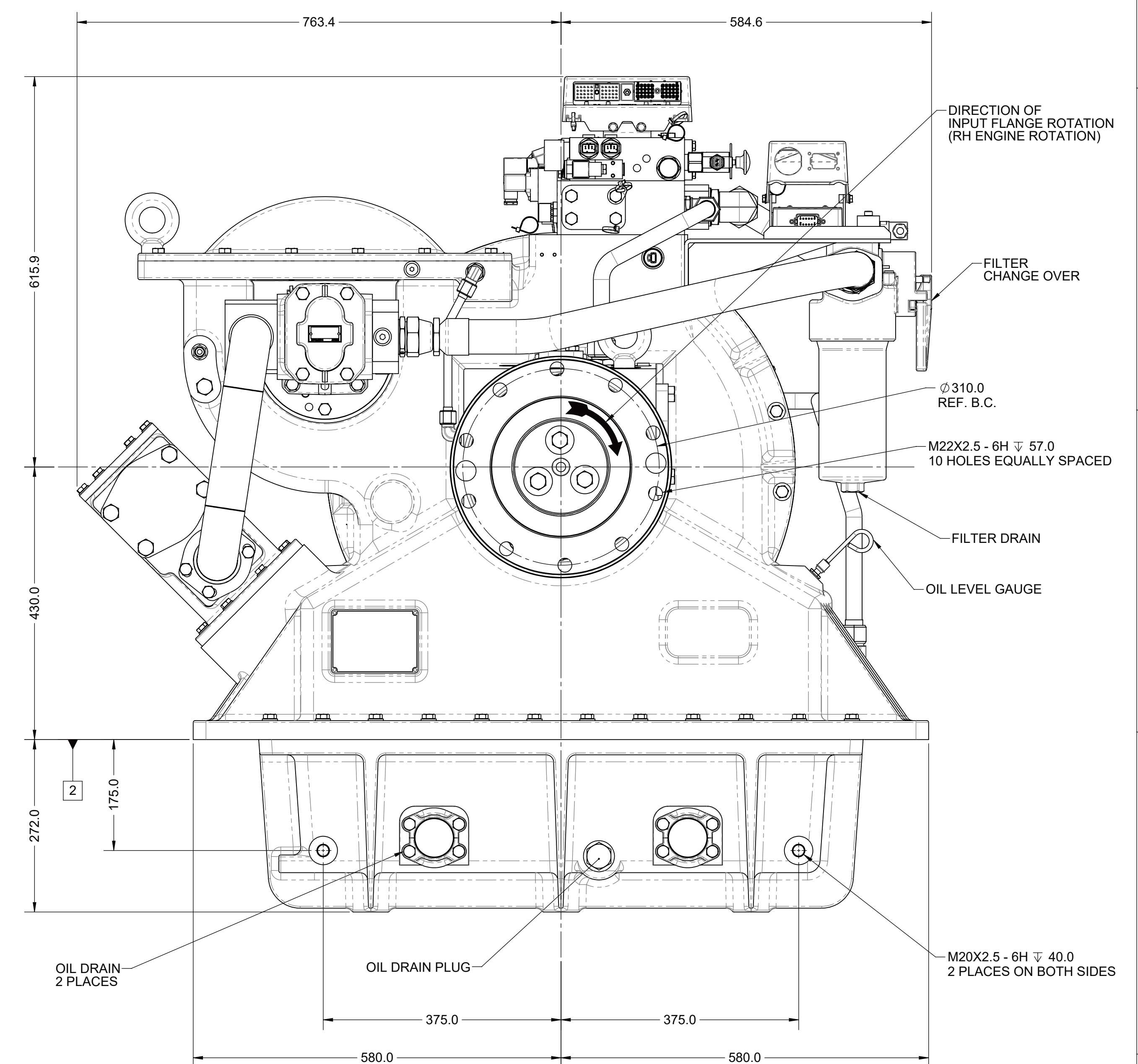
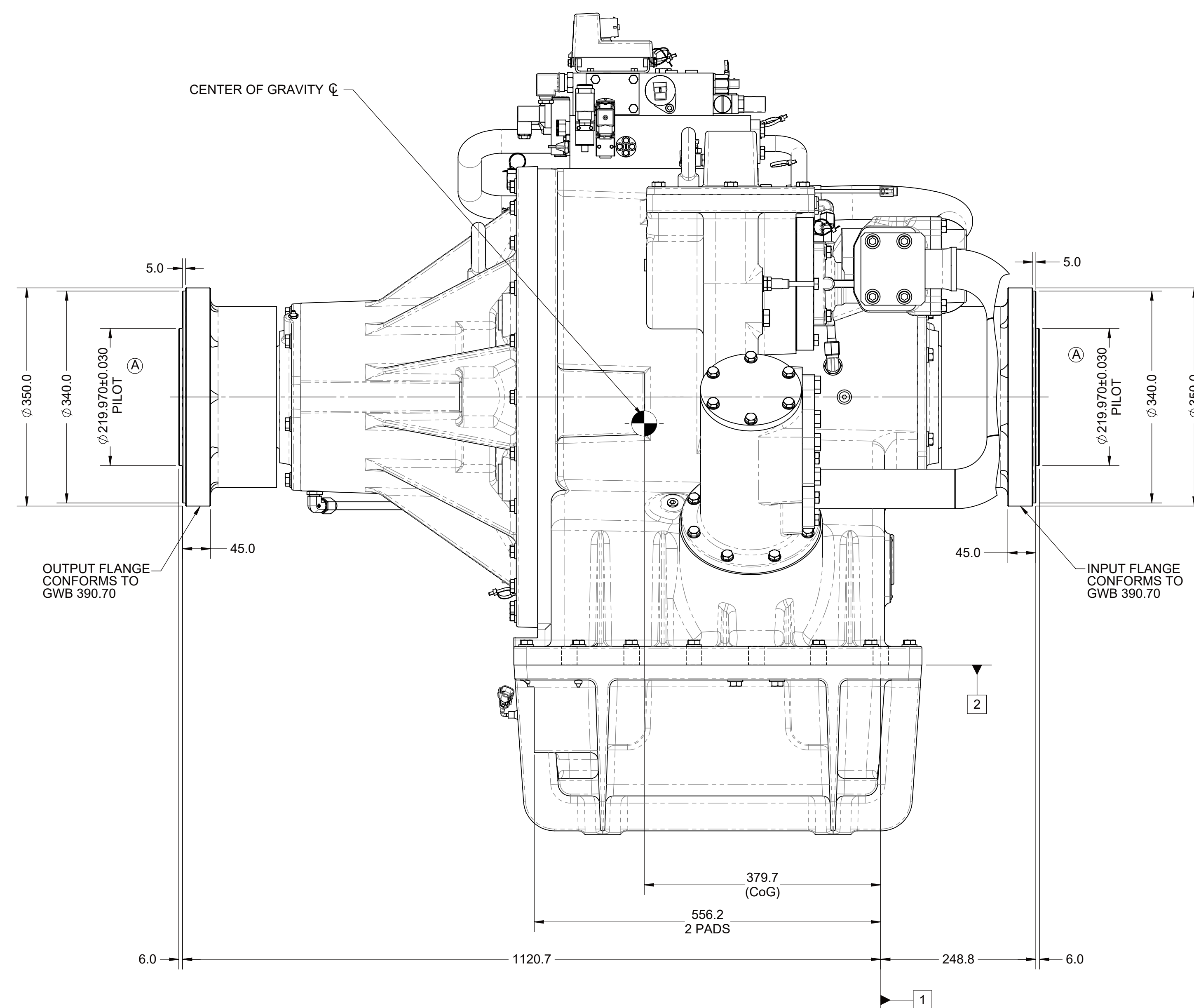
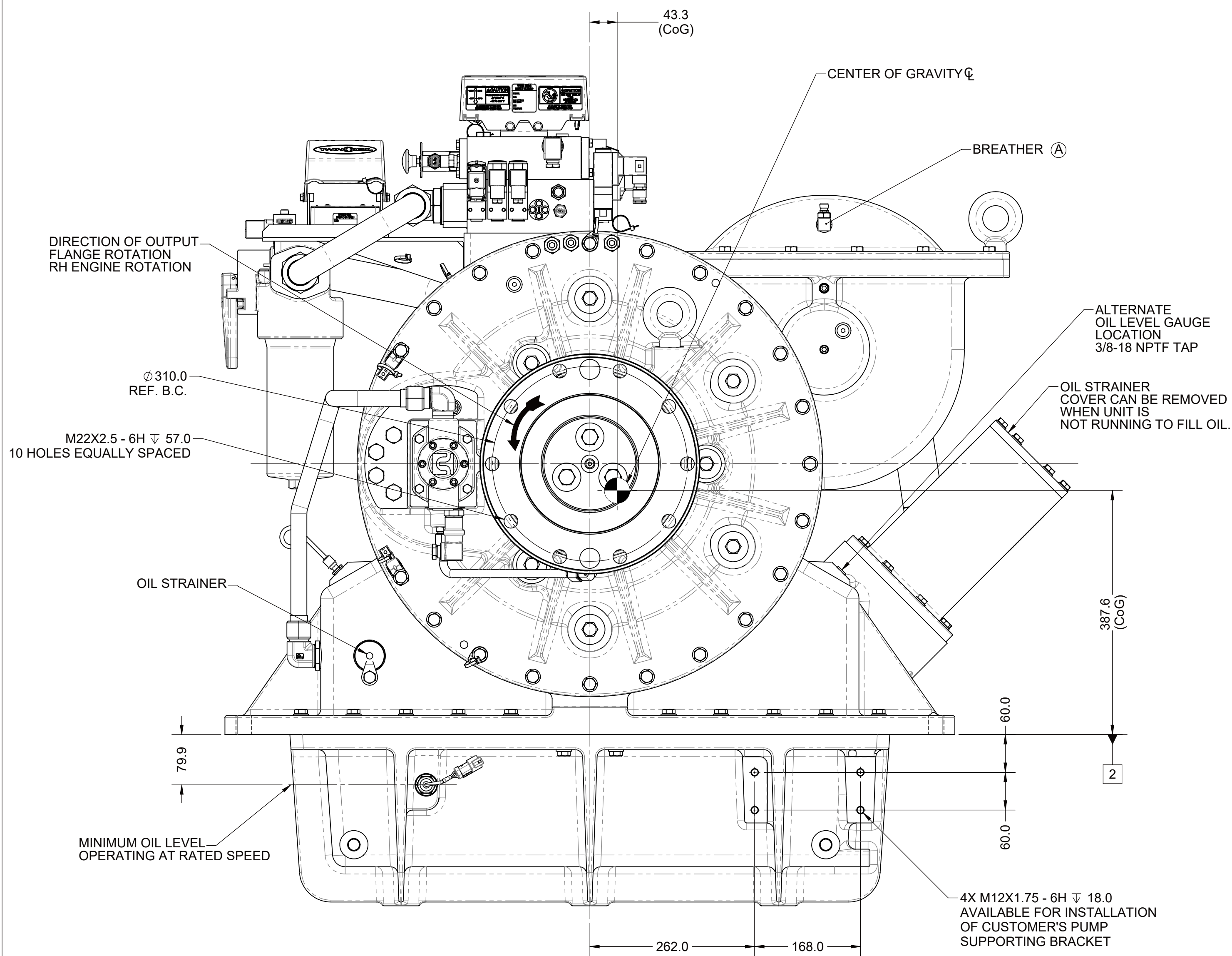
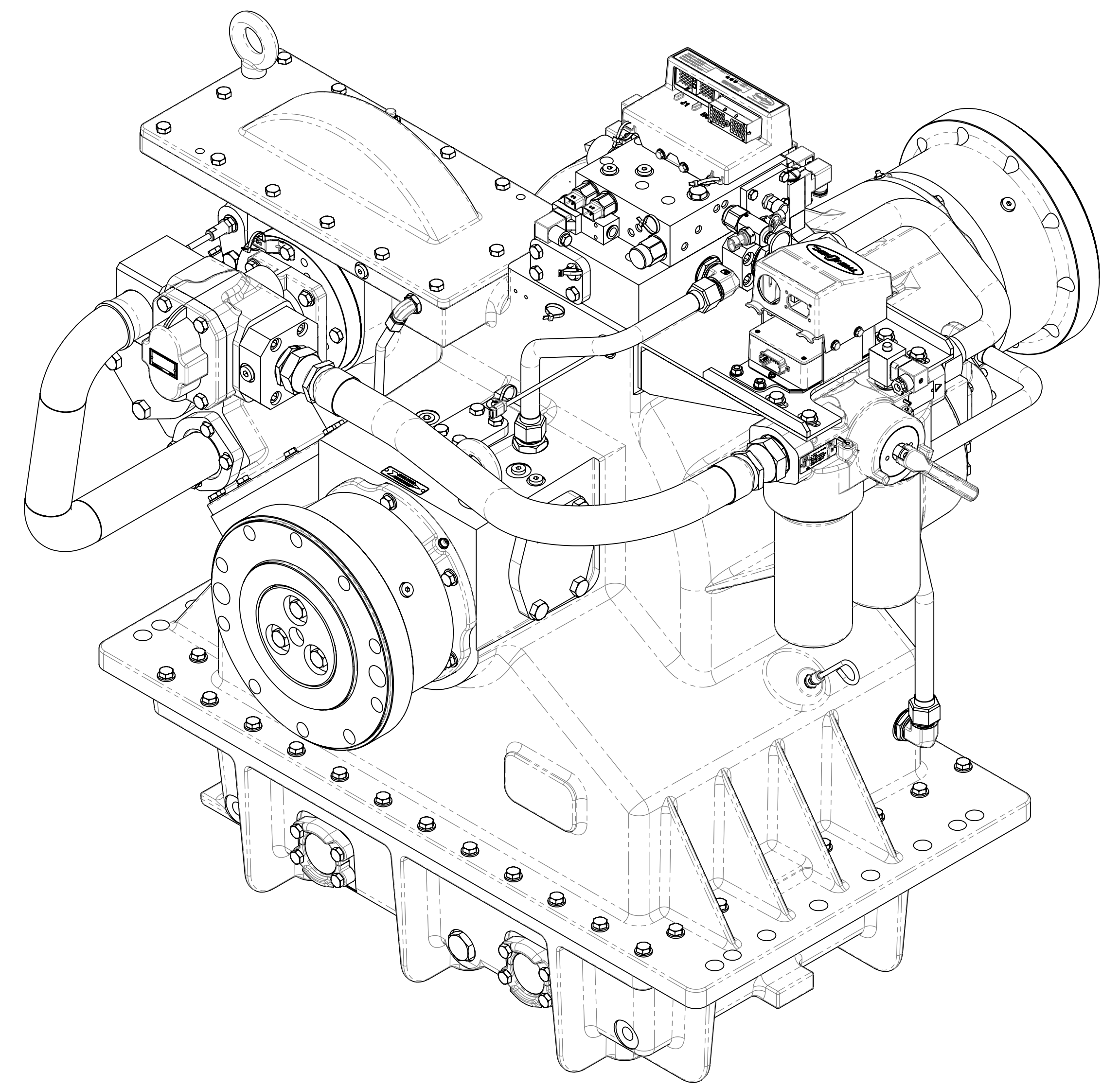
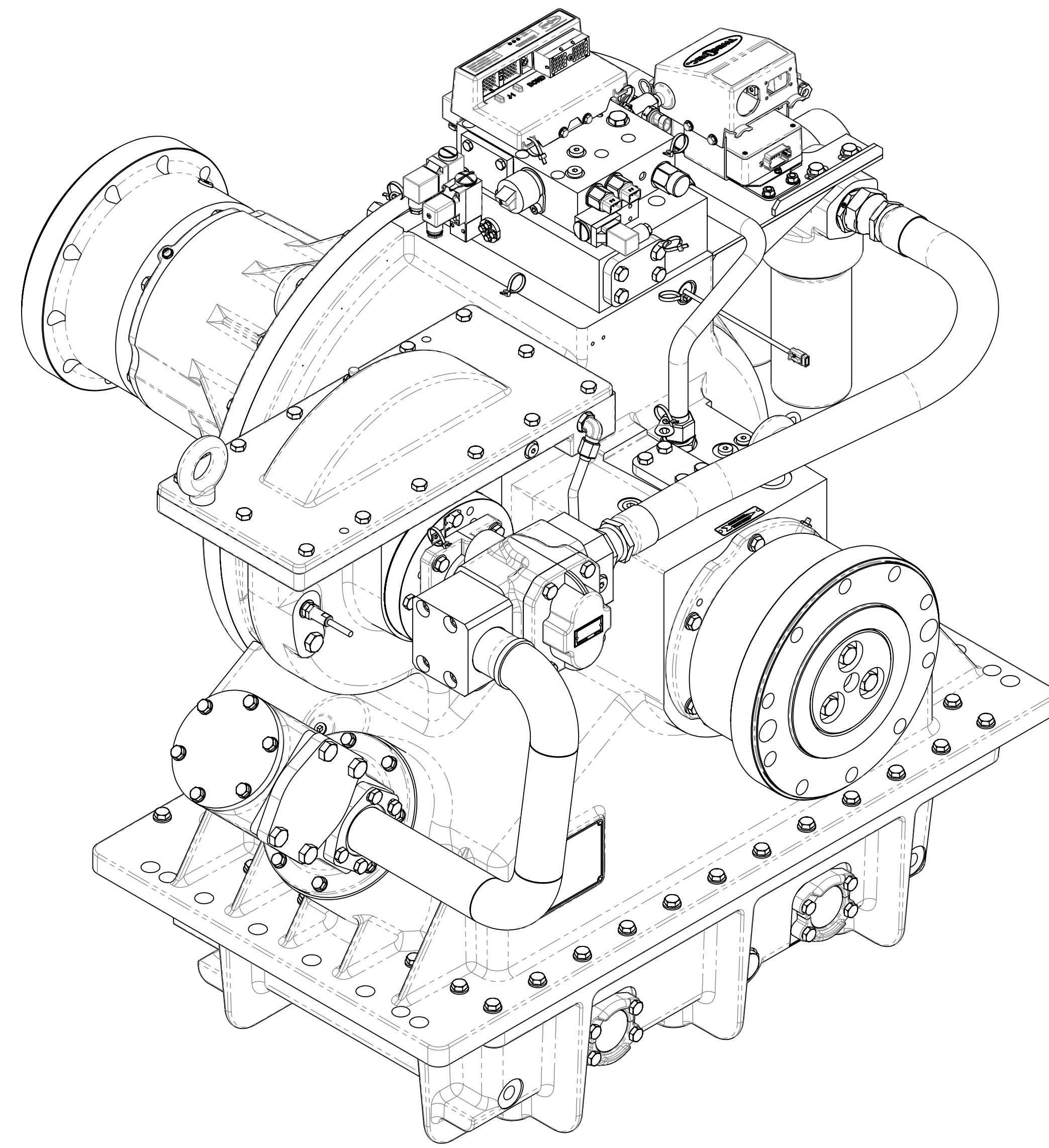
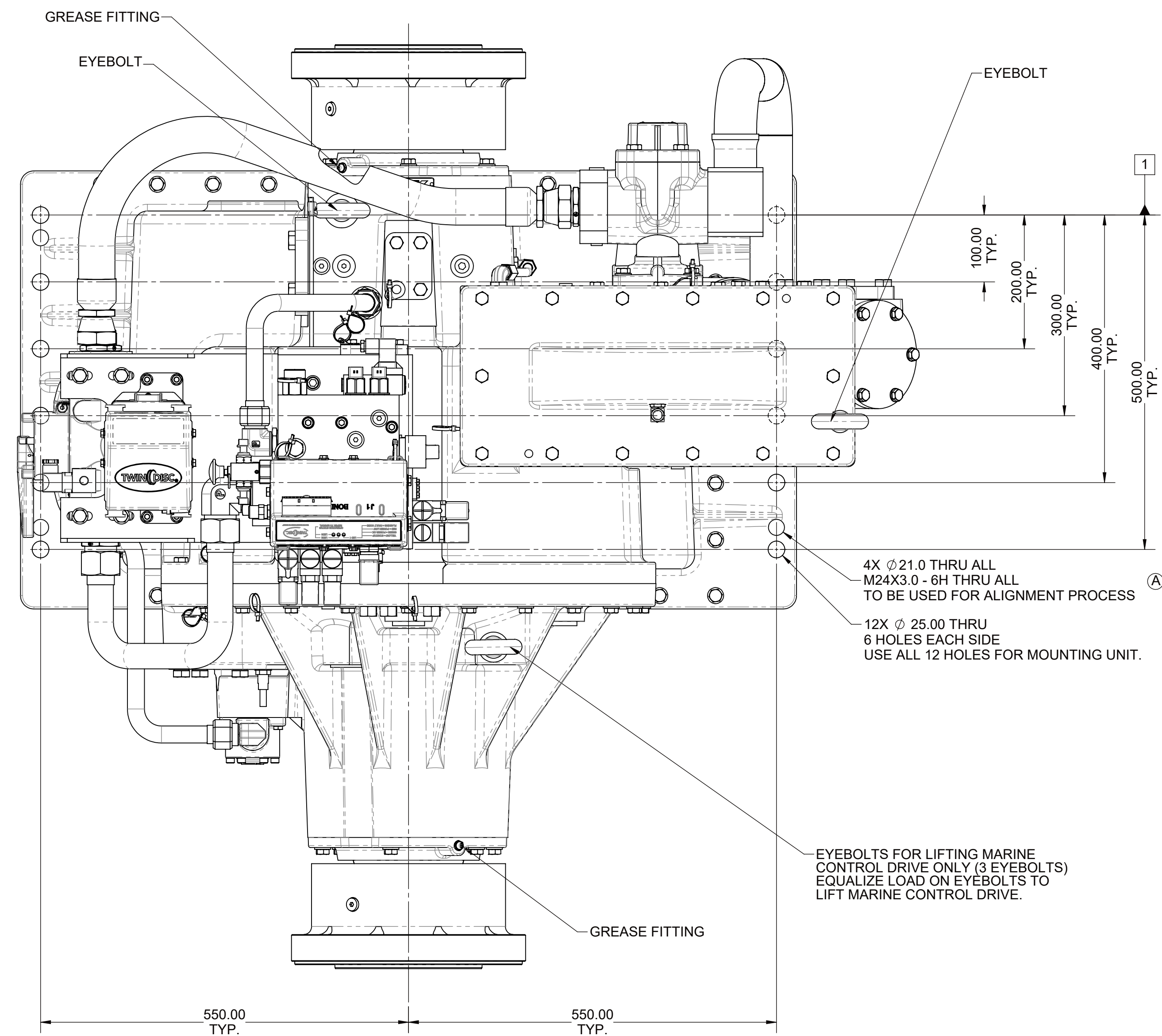





- 1 INPUT GROUP REFERENCE PLANE  
(THRU FIRST RANGE OF FIXING HOLES)
- 2 MOUNTING FACE

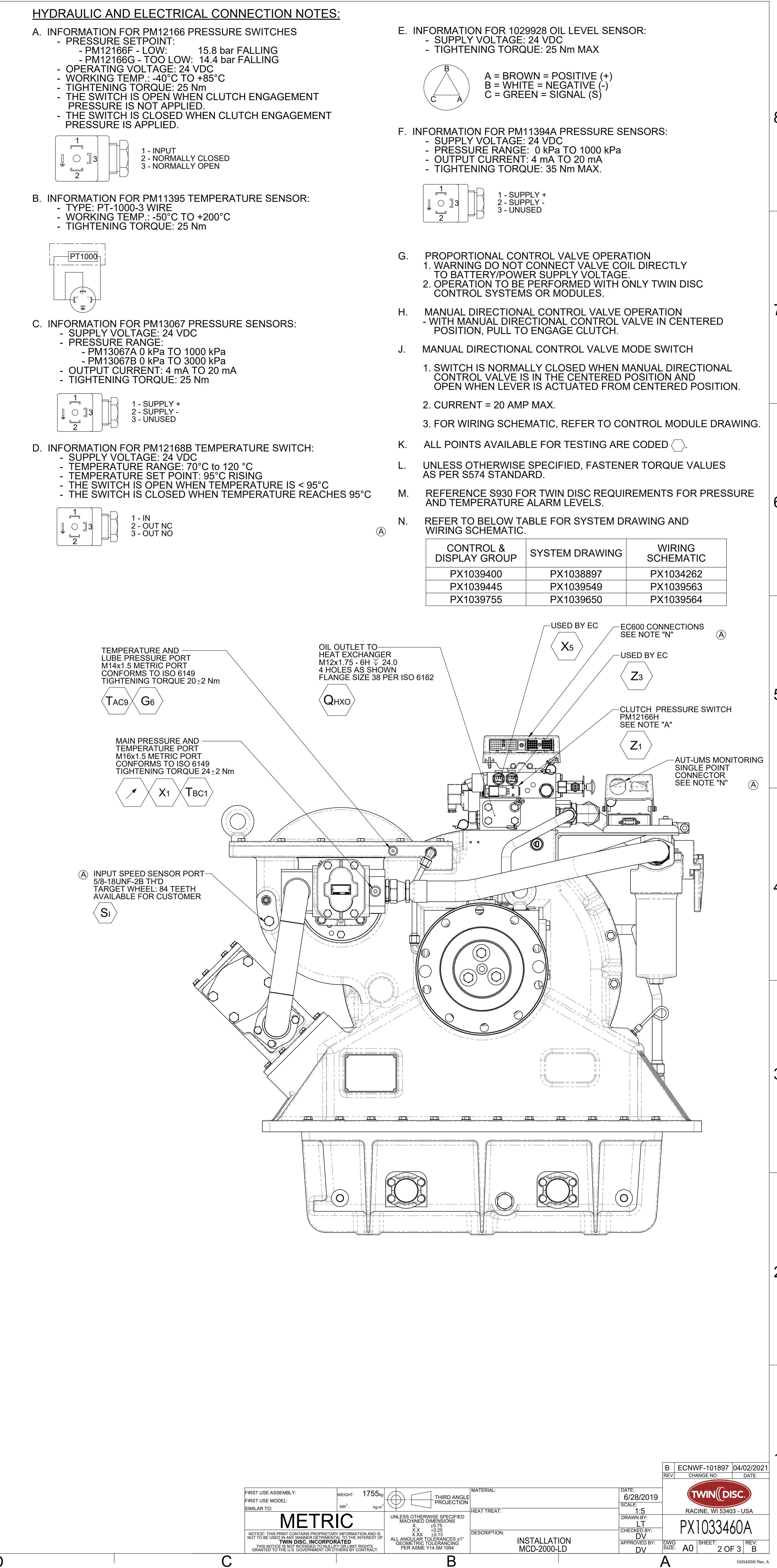
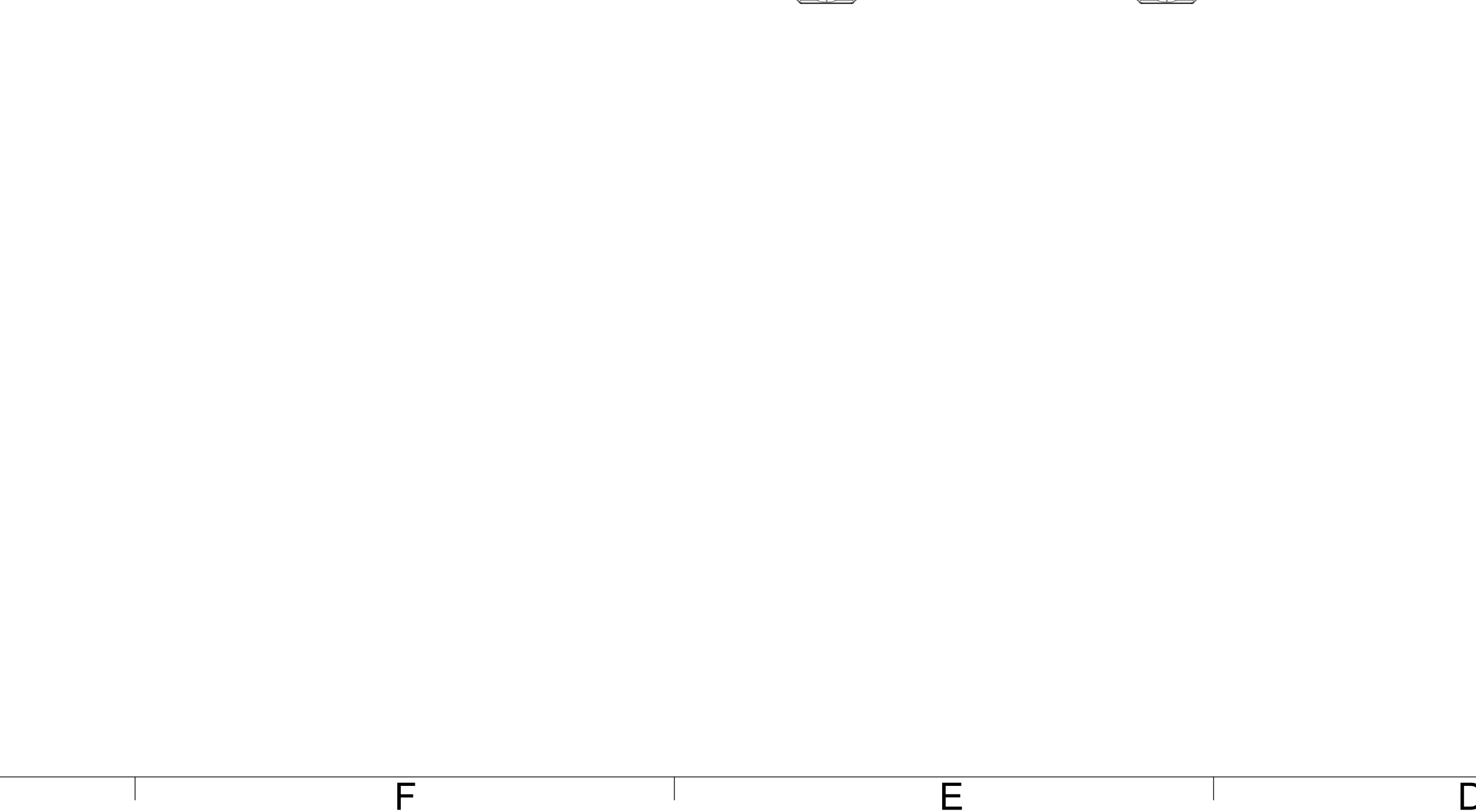
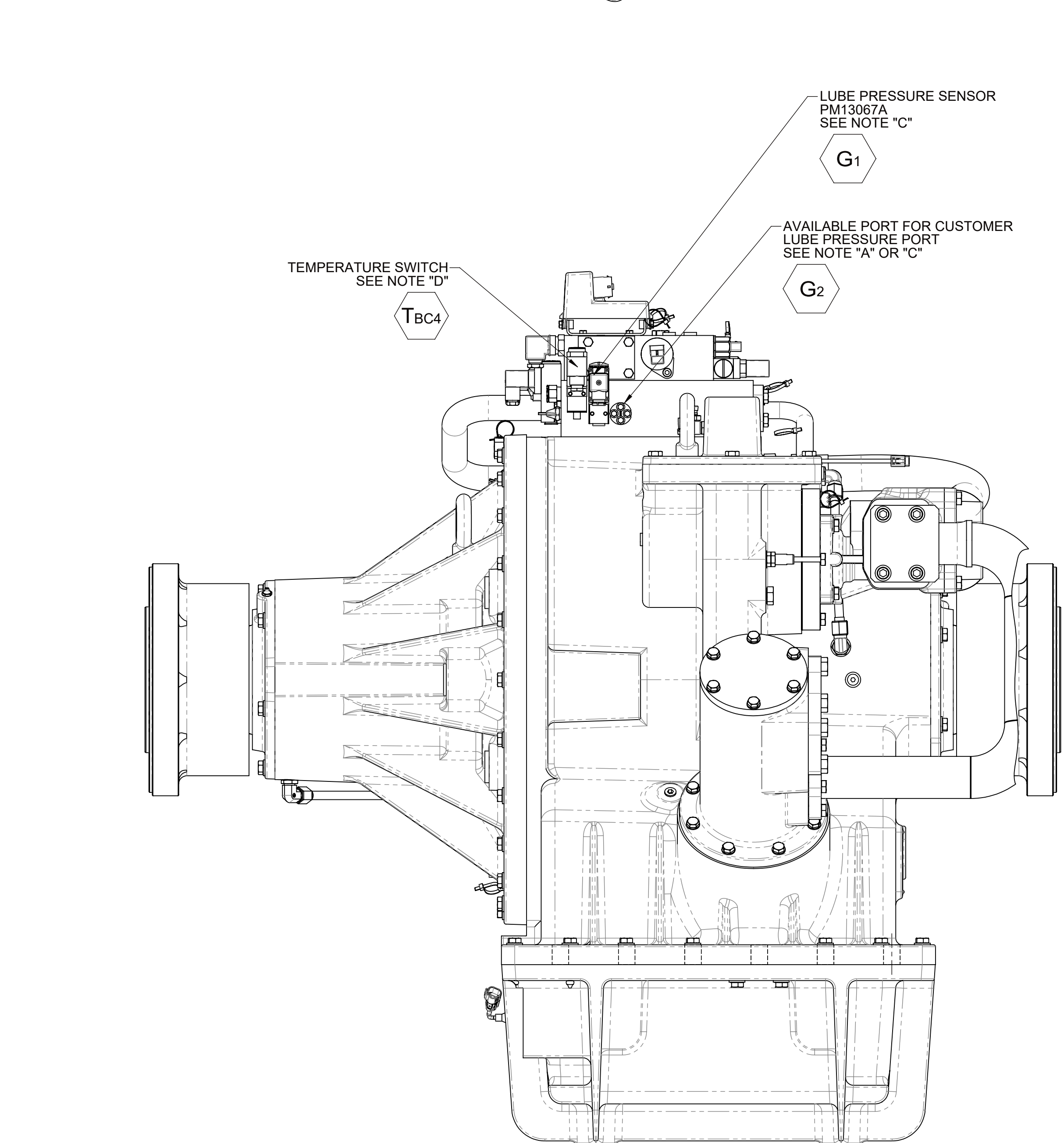
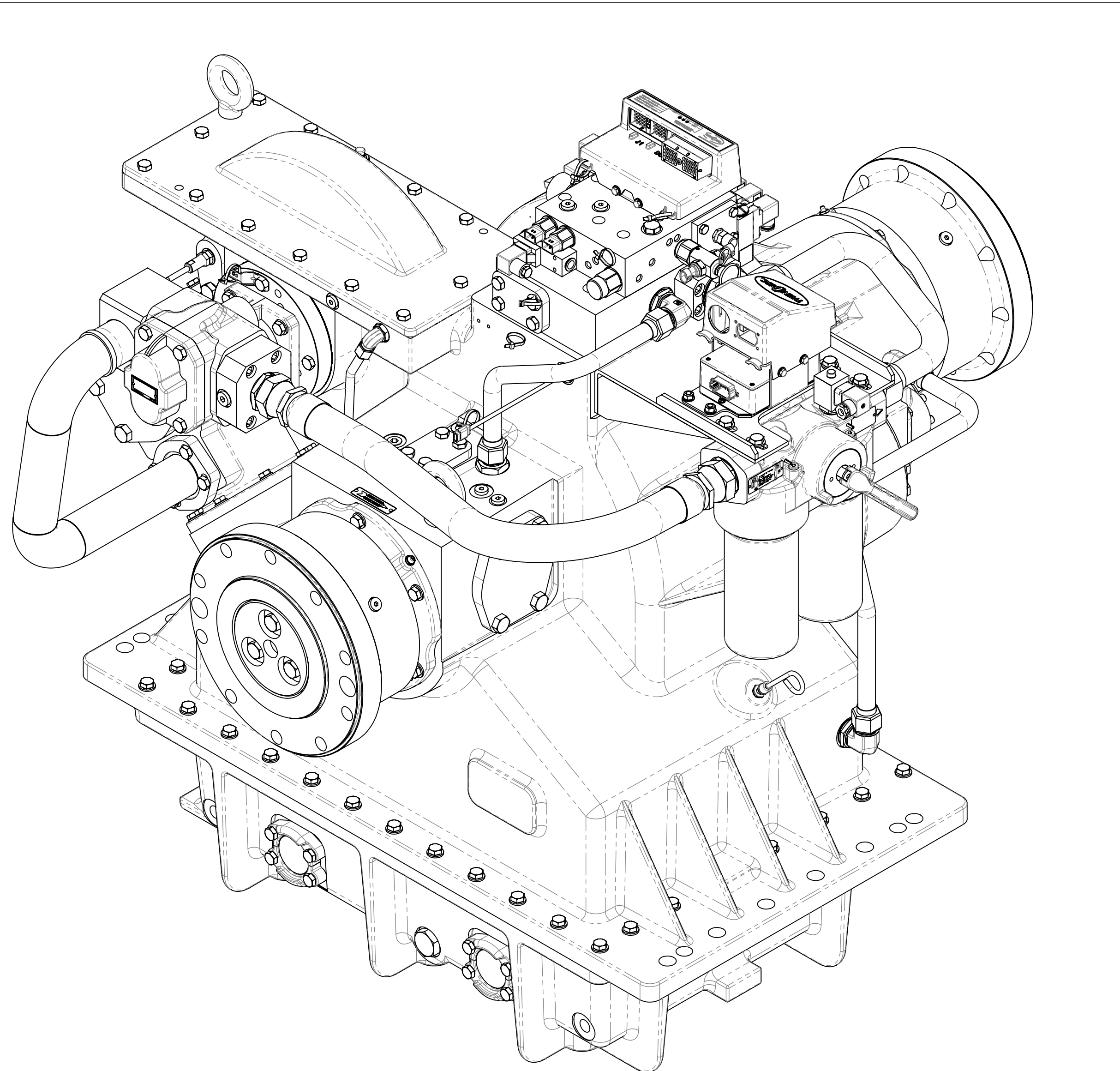
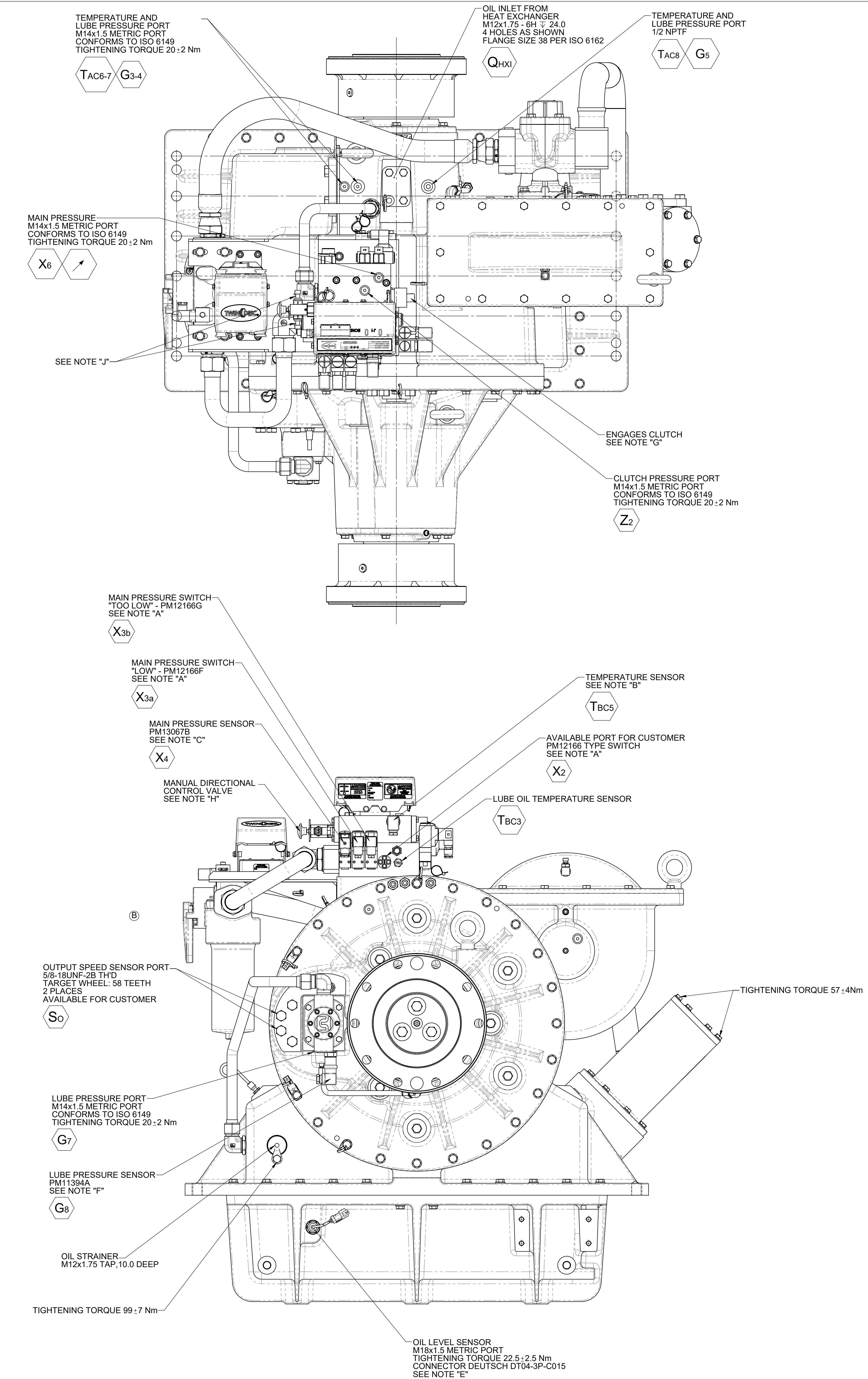


SHEETS	DESCRIPTION
SHEET 1	CUSTOMER INTERFACE AND INSTALLATION DIMENSIONS
SHEET 2	ELECTRIC, HYDRAULIC CONNECTIONS AND TEST PORTS LOCATIONS
SHEET 3	SERVICE POINT AND SERVICE CLEARANCE REQUIREMENTS

**EQUIPMENT SHOWN:**  
- MCD-2000-LD PER PX1032200 ASSEMBLY  
- FREESTANDING INPUT HUB (GWB 390.70) - PX1032338  
- FREESTANDING OUTPUT HUB (GWB 390.70) - PX1032339  
- MAIN PUMP - LOW FLOW - PX1032341A  
- TRAILING PUMP - PX1032345A

FIRST USE ASSEMBLY:		WEIGHT: 1755lb		 THIRD ANGLE PROJECTION		MATERIAL:		DATE: 6/28/2019			
FIRST USE MODEL:		WGT: kg/m				REAT TREAT		SCALE: 1:5		RACINE, WI 53403-USA	
SIMILAR TO:								DRAWN BY: LT			
								CHECKED BY: DV			
<h1>METRIC</h1> <p>NOTICE: THIS PRINT CONTAINS PROPRIETARY INFORMATION THAT IS NOT TO BE REPRODUCED OR TRANSMITTED IN ANY FORM OR BY ANY MEANS, ELECTRONIC OR MECHANICAL, INCLUDING PHOTOCOPYING, RECORDING, OR BY ANY INFORMATION STORAGE AND RETRIEVAL SYSTEM.</p> <p>THESE NOTES AND NO ACCESSORIES ARE THE PROPERTY OF TWIN DISC. NO PARTS OR ACCESSORIES ARE TO BE USED WITHOUT THE WRITTEN PERMISSION OF TWIN DISC. © 1994 TWIN DISC. ALL RIGHTS RESERVED.</p>		UNLESS OTHERWISE SPECIFIED MACHINED DIMENSIONS X.X - 0.25 X.XX - 0.125 X.XXX - 0.063 ALL DIMENSIONS ARE DECIMALS IN"		DESCRIPTION:		INSTALLATION		DATE: 6/28/2019		REV: B	
				GEOMETRIC TOLERANCE PER ASME Y14.5-1994		MCD-2000-LD		APPROVED BY: DV		SHEET: 1 OF 3	

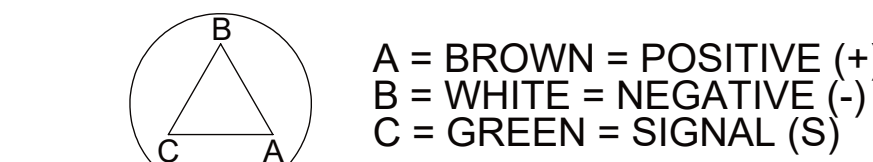




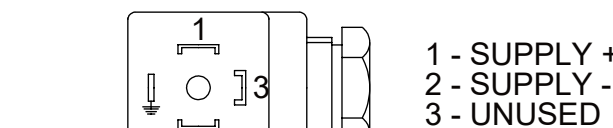
# HYDRAULIC AND ELECTRICAL CONNECTION NOTES:

- A. INFORMATION FOR PM12166 PRESSURE SWITCHES
- PRESSURE SETPOINT:
    - PM12166F - LOW: 15.8 bar FALLING
    - PM12166G - TOO LOW: 14.4 bar FALLING
  - OPERATING VOLTAGE: 24 VDC
  - WORKING TEMP: -40°C TO +85°C
  - TIGHTENING TORQUE: 25 Nm
  - THE SWITCH IS OPEN WHEN CLUTCH ENGAGEMENT PRESSURE IS NOT APPLIED.
  - THE SWITCH IS CLOSED WHEN CLUTCH ENGAGEMENT PRESSURE IS APPLIED.
- B. INFORMATION FOR PM11395 TEMPERATURE SENSOR:
- TYPE: PT-1000-3 WIRE
  - WORKING TEMP: -50°C TO +200°C
  - TIGHTENING TORQUE: 25 Nm
- C. INFORMATION FOR PM13067 PRESSURE SENSORS:
- SUPPLY VOLTAGE: 24 VDC
  - PRESSURE RANGE:
    - PM13067A 0 kPa TO 1000 kPa
    - PM13067B 0 kPa TO 3000 kPa
  - OUTPUT CURRENT: 4 mA TO 20 mA
  - TIGHTENING TORQUE: 25 Nm
- D. INFORMATION FOR PM12168B TEMPERATURE SWITCH:
- SUPPLY VOLTAGE: 24 VDC
  - TEMPERATURE RANGE: 70°C TO 120 °C
  - TEMPERATURE SET POINT: 95°C RISING
  - THE SWITCH IS OPEN WHEN TEMPERATURE IS < 95°C
  - THE SWITCH IS CLOSED WHEN TEMPERATURE REACHES 95°C

- E. INFORMATION FOR 1029928 OIL LEVEL SENSOR:
- SUPPLY VOLTAGE: 24 VDC
  - TIGHTENING TORQUE: 25 Nm MAX

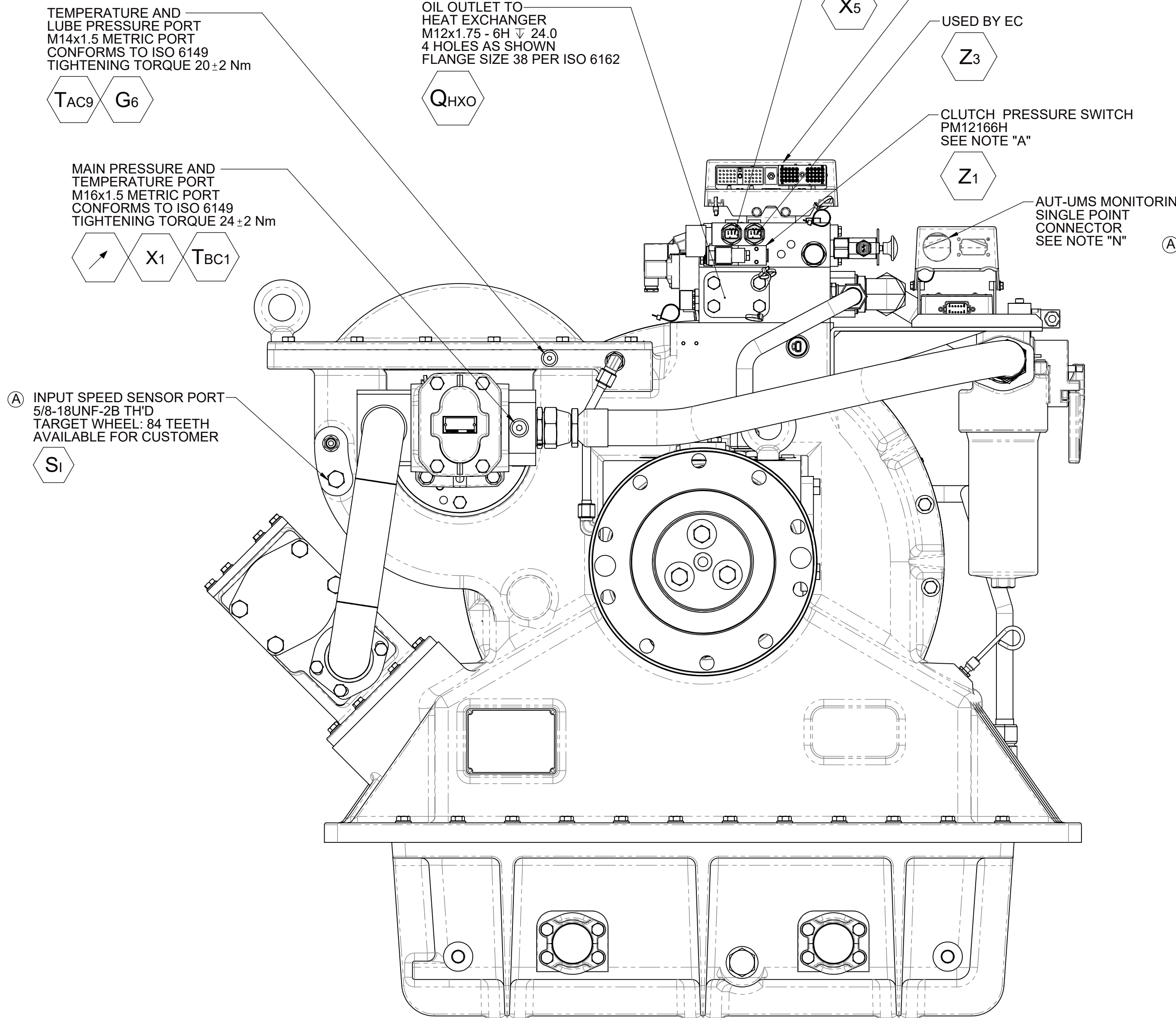


- F. INFORMATION FOR PM11394A PRESSURE SENSORS:
- SUPPLY VOLTAGE: 24 VDC
  - PRESSURE RANGE: 0 kPa TO 1000 kPa
  - OUTPUT CURRENT: 4 mA TO 20 mA
  - TIGHTENING TORQUE: 35 Nm MAX.



- G. PROPORTIONAL CONTROL VALVE OPERATION
1. WARNING DO NOT CONNECT VALVE COIL DIRECTLY TO BATTERY/POWER SUPPLY VOLTAGE.
  2. OPERATION TO BE PERFORMED WITH ONLY TWIN DISC CONTROL SYSTEMS OR MODULES.
- H. MANUAL DIRECTIONAL CONTROL VALVE OPERATION
- WITH MANUAL DIRECTIONAL CONTROL VALVE IN CENTERED POSITION, PULL TO ENGAGE CLUTCH.
- J. MANUAL DIRECTIONAL CONTROL VALVE MODE SWITCH
1. SWITCH IS NORMALLY CLOSED WHEN MANUAL DIRECTIONAL CONTROL VALVE IS IN THE CENTERED POSITION AND OPEN WHEN LEVER IS ACTUATED FROM CENTERED POSITION.
  2. CURRENT = 20 AMP MAX.
  3. FOR WIRING SCHEMATIC, REFER TO CONTROL MODULE DRAWING.
- K. ALL POINTS AVAILABLE FOR TESTING ARE CODED (X).
- L. UNLESS OTHERWISE SPECIFIED, FASTENER TORQUE VALUES AS PER S574 STANDARD.
- M. REFERENCE S930 FOR TWIN DISC REQUIREMENTS FOR PRESSURE AND TEMPERATURE ALARM LEVELS.
- N. REFER TO BELOW TABLE FOR SYSTEM DRAWING AND WIRING SCHEMATIC.

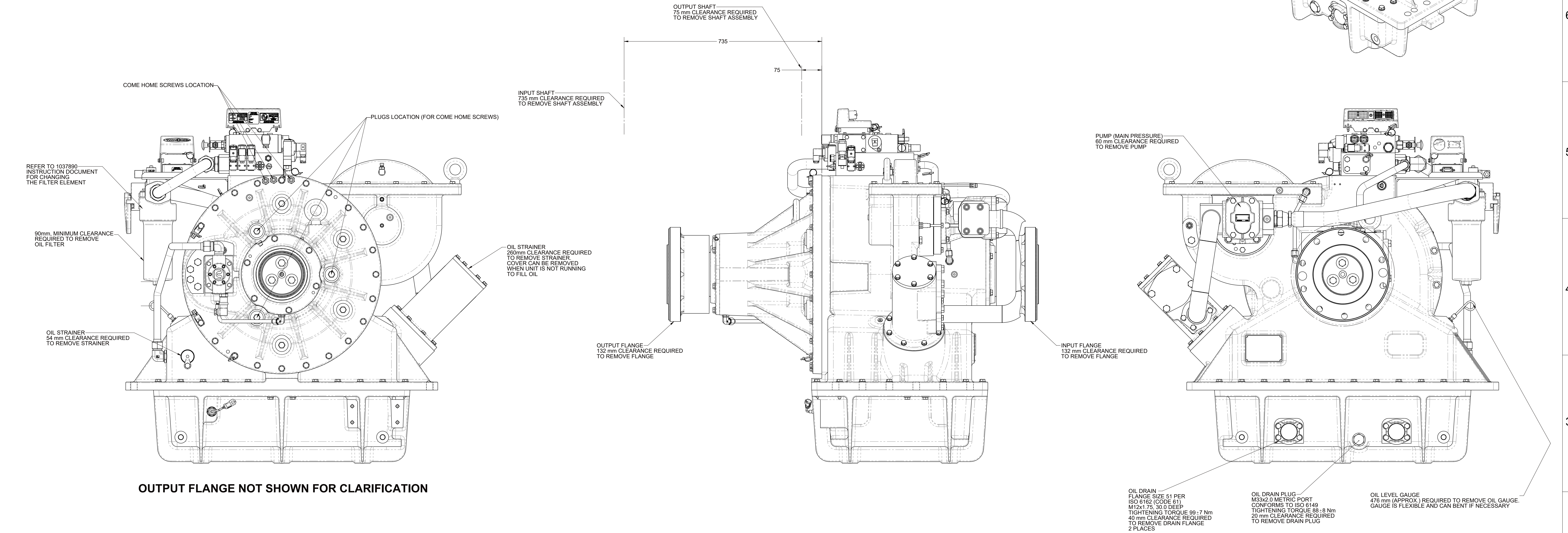
CONTROL & DISPLAY GROUP	SYSTEM DRAWING	WIRING SCHEMATIC
PX1039400	PX1038897	PX1034262
PX1039445	PX1039549	PX1039563
PX1039755	PX1039650	PX1039564



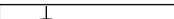



SERVICE AND CLEARANCE REQUIREMENTS

1. INFORMATION PRESENTED ON THIS SHEET PERTAIN TO CLEARANCE REQUIREMENTS TO SERVICE THE NOTED COMPONENT.
2. REFER TO SERVICE MANUAL 1033754 FOR ADDITIONAL INSTRUCTIONS AND PRECAUTIONS WHEN SERVICING THE PRODUCT.



COME HOME SCREWS NOTE:  
REMOVE 3 PLUGS  
USE THE 3 COME HOME SCREWS  
USE AN EXTERNAL HEX KEY OF 8mm ACROSS FLAT  
MAX TIGHTENING TORQUE PER SCREW: 100 Nm  
MAX INPUT POWER LIMITED TO 40% OF RATED POWER

FIRST USE ASSEMBLY: FIRST USE MODEL: SIMILAR TO:		WEIGHT: 1755N		THIRD ANGLE PROJECTION	MATERIAL:	DATE: 6/28/2019		
<b>METRIC</b>		UNLESS OTHERWISE SPECIFIED DIMENSIONS ARE IN MILLIMETERS (INCHES) X.XX X.XX X.XX ALL DIMENSIONS ARE TO UNLESS OTHERWISE SPECIFIED GEOMETRIC TOLERANCING PER ASME Y14.5M-1994			HEAT TREAT:	SCALE: 1:5	RACINE, WI 53403 - USA	
NOTICE: THIS PRINT CONTAINS PROPRIETARY INFORMATION AND IS NOT TO BE USED IN ANY MANNER WITHOUT THE WRITTEN PERMISSION OF TWIN DISC, INCORPORATED. THIS NOTICE IS TO BE REPRODUCED ON ALL PRINTED COPIES OF THIS PRINT.					DESCRIPTION: INSTALLATION MCD-2000-LD	DRAWN BY: J.T	PX1033460-A	
						CHECKED BY: D.V		
					APPROVED BY: D.V	DWG SIZE: A0	SHEET: 3 OF 3	REV: B

102450W Rev. A