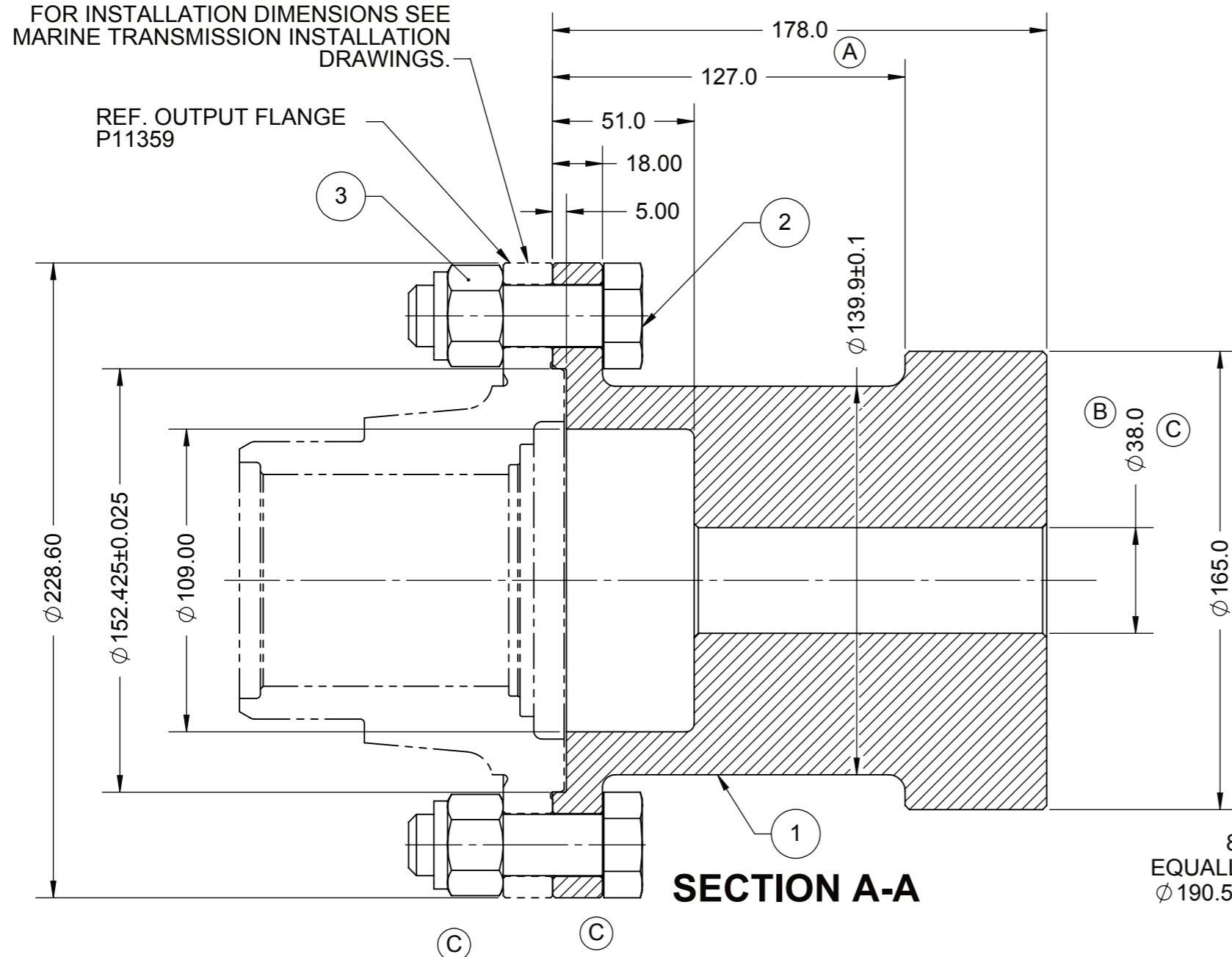


FOR INSTALLATION DIMENSIONS SEE MARINE TRANSMISSION INSTALLATION DRAWINGS.

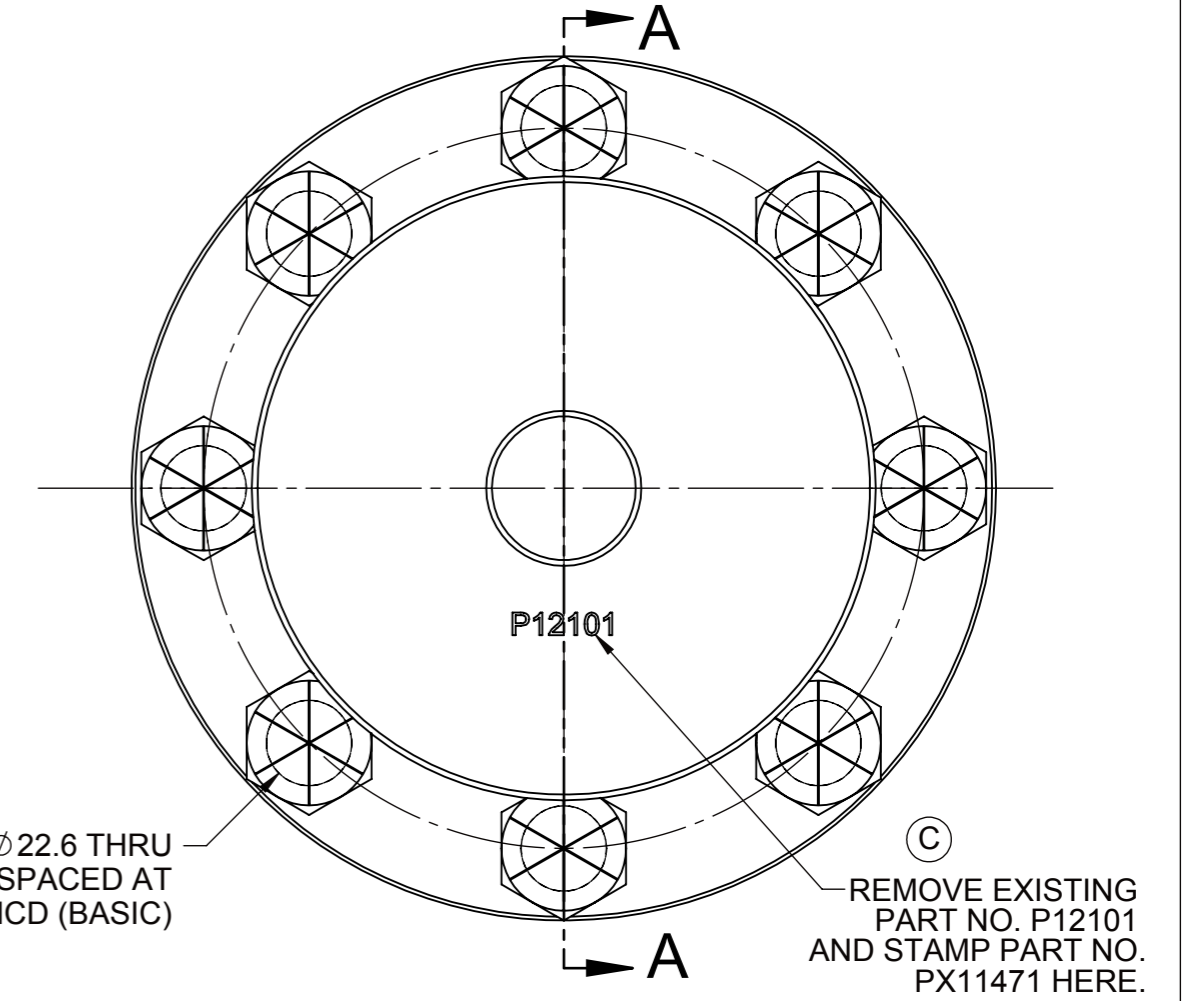


**SECTION A-A**

(B)

BILL OF MATERIAL			
ITEM NO.	QTY.	PART NO.	DESCRIPTION
1	1	P12101	FLANGE, COMPANION
2	8	M2008H	SCREW, HEX HEAD
3	8	M2026X	NUT, LOCKING
4	1		INCLUDE ONE (1) COPY OF DRAWING PX11471

(C)



(C)

**NOTES:**

1. THE PROPELLER SHAFT TO COMPANION FLANGE JOINT DESIGN MAY BE REQUIRED TO BE REVIEWED AND APPROVED BY A CLASSIFICATION SOCIETY DEPENDING ON THE CLASS OF THE VESSEL.
2. THE DESIGN OF THE PROPELLER SHAFT TO COMPANION FLANGE JOINT IS THE RESPONSIBILITY OF THE DESIGNER FOR THE PROPULSION SYSTEM.
3. RECOMMENDED MAXIMUM BORE FOR PROPELLER SHAFT NOT TO EXCEED 109.0 mm.
4. FLANGE MATERIAL PER TWIN DISC MATERIAL SPECIFICATION S396G-1. REFERENCE 1025433G FOR MECHANICAL PROPERTIES.
5. ALL BOLTS TO BE TIGHTENED PER TWIN DISC S574 TORQUE REQUIREMENTS.
6. MATERIAL CERTIFICATES FOR A COMPANION FLANGE SUPPLIED BY TWIN DISC ARE AVAILABLE UPON REQUEST. CONSULT TWIN DISC APPLICATION ENGINEERING FOR FURTHER INSTRUCTIONS ON PROCESS TO OBTAIN A COPY OF THE MATERIAL CERTIFICATE.

(C) **APPLICABLE MODELS:**

- MG-5135A PER PX12100, & PX11380 ASSEMBLIES
- MG-5135RV PER PX11945 ASSEMBLY
- MG-5136A PER 1027557 ASSEMBLY
- MG-5136RV PER 1027561 ASSEMBLY
- MGX-5135A PER PX11740, & PX12380 ASSEMBLIES
- MGX-5135A PER PX12340 ASSEMBLY
- MGX-5135RV PER PX11880 ASSEMBLY
- MGX-5135RV PER PX12520 ASSEMBLY
- MGX-5136A PER 1025600 ASSEMBLY
- MGX-5136RV PER 1027556 ASSEMBLY

(B) **REVISED AND REDRAWN IN SOLIWORKS DATED 08/18/2011**

FIRST USE ASSEMBLY: PX11380 FIRST USE MODEL: MG-5135A SIMILAR TO: XB5917	WEIGHT: 24.8962 kg WR <sup>2</sup> : 0.1164 kg-m <sup>2</sup>	THIRD ANGLE PROJECTION	MATERIAL:	DATE: 08/19/2011
<b>METRIC</b>		UNLESS OTHERWISE SPECIFIED MACHINED DIMENSIONS X ±0.75 X.X ±0.25 X.XX ±0.13	HEAT TREAT:	SCALE: 1:2
NOTICE! THIS PRINT CONTAINS PROPRIETARY INFORMATION AND IS NOT TO BE USED IN ANY MANNER DETRIMENTAL TO THE INTEREST OF <b>TWIN DISC, INCORPORATED</b> . THIS NOTICE IS NOT INTENDED TO NULLIFY OR LIMIT RIGHTS GRANTED TO THE U.S. GOVERNMENT OR OTHERS BY CONTRACT.		ALL ANGULAR TOLERANCES ±1° GEOMETRIC TOLERANCING PER ASME Y14.5M 1994	DESCRIPTION: <b>FLANGE ASSY COMPANION</b>	DRAWN BY: YU
			APPROVED BY: ALC	CHECKED BY: JMF

C	ECNWF-24561	09/15/2014
REV	CHANGE NO.	DATE
RACINE, WI 53403 - USA		
<b>PX11471</b>		
DWG SIZE: A3	SHEET: 1 OF 1	REV: C