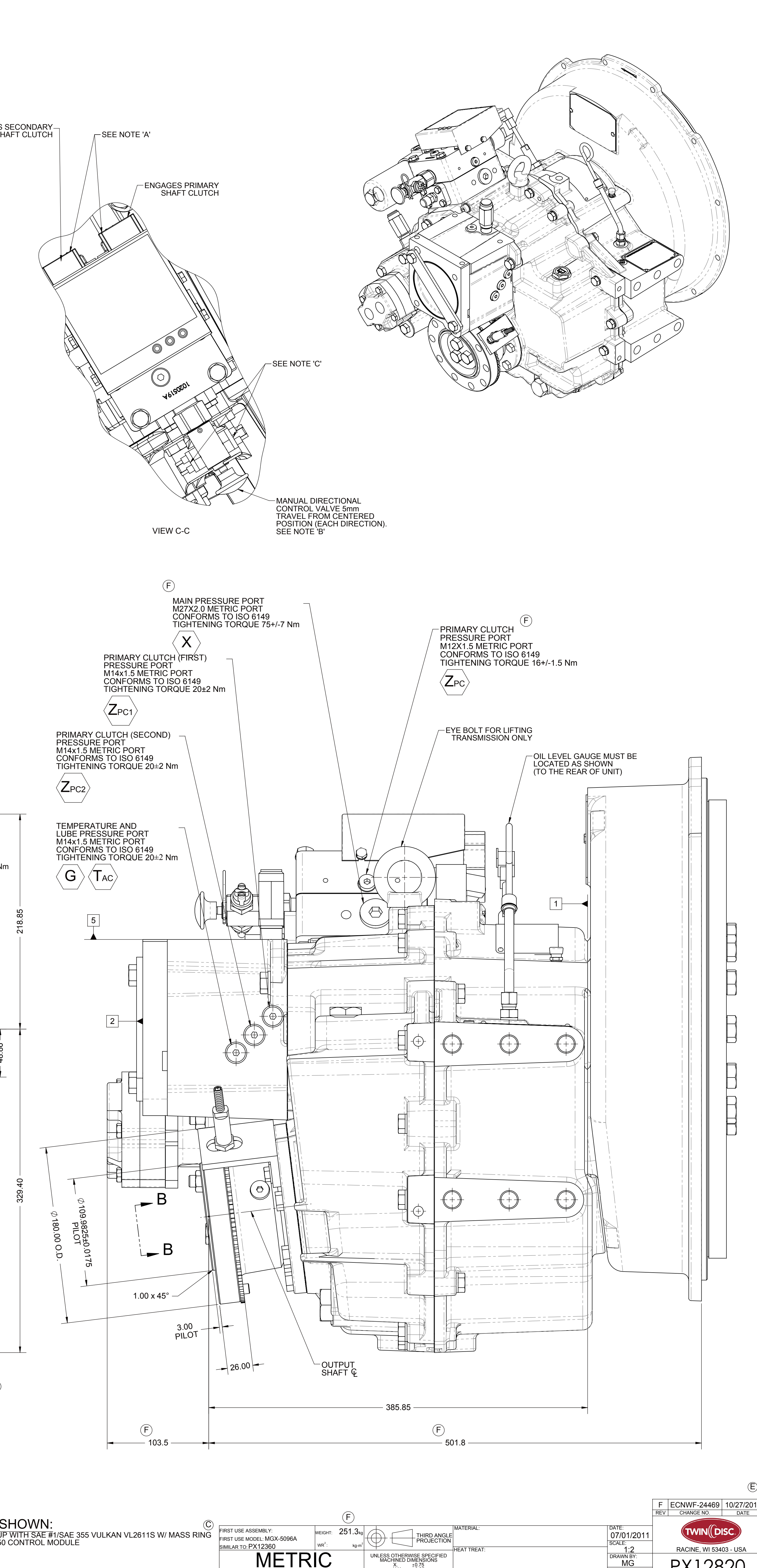
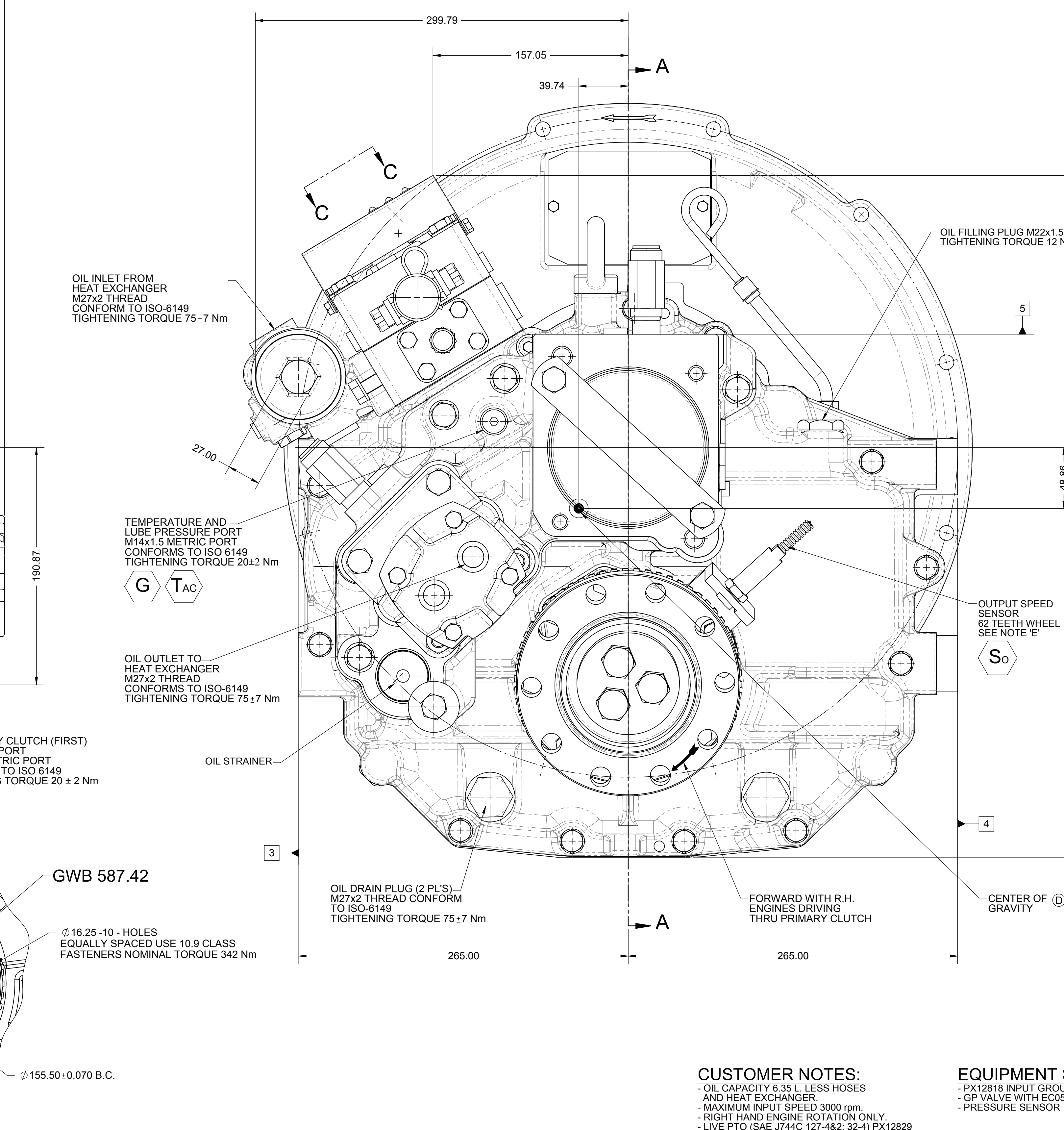
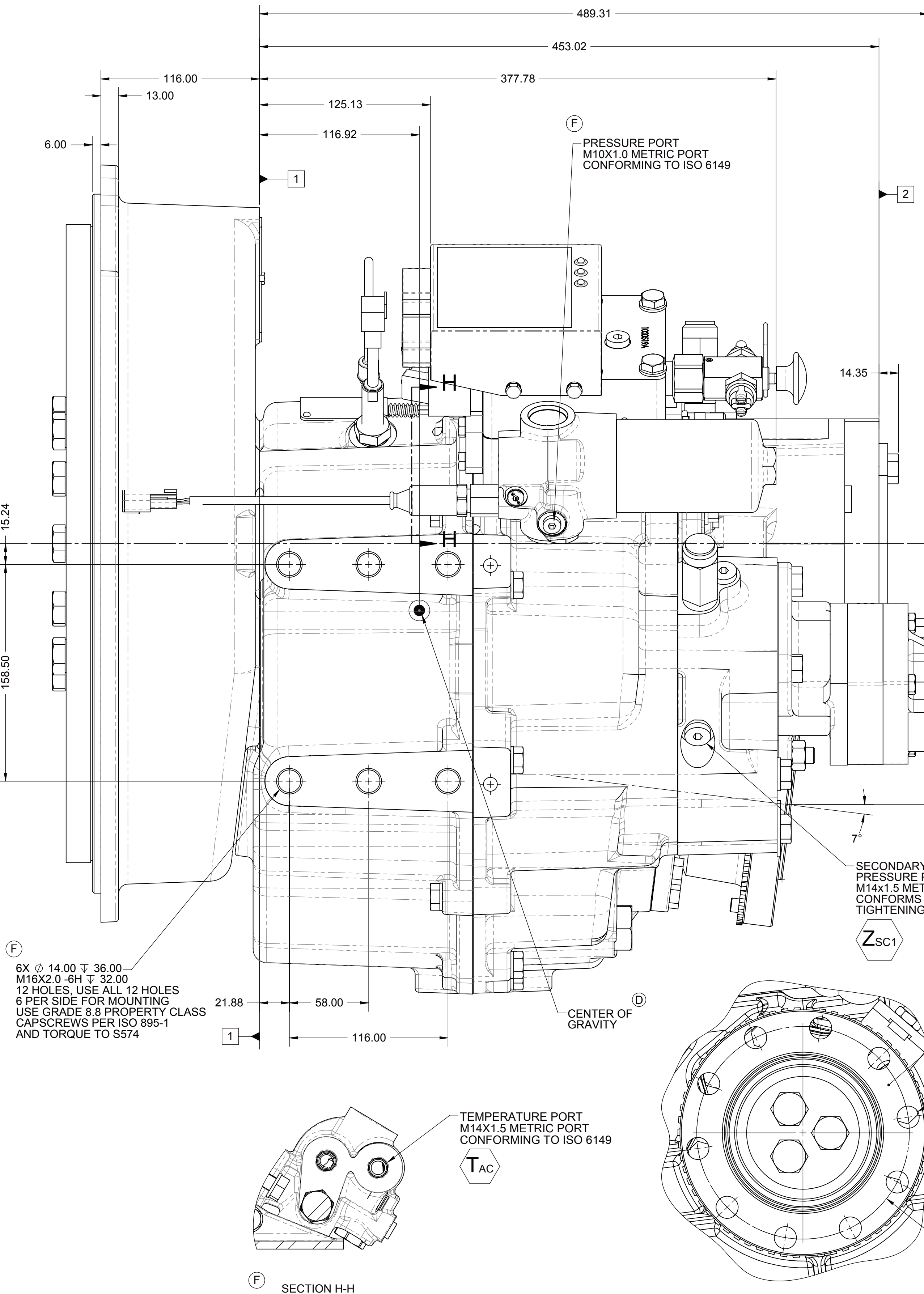


- A. PROPORTIONAL CONTROL VALVE OPERATION.
 - 1. WARNING DO NOT CONNECT VALVE COIL DIRECTLY TO BATTERY/POWER SUPPLY VOLTAGE.
 - 2. OPERATION TO BE PERFORMED WITH ONLY TWIN-DISC CONTROL SYSTEM MODULES.
- B. MANUAL DIRECTIONAL CONTROL VALVE OPERATION.
 - 1. WITH MANUAL DIRECTIONAL CONTROL VALVE IN CENTERED POSITION PULL TO ENGAGE SECONDARY CLUTCH.
 - 2. WITH MANUAL DIRECTIONAL CONTROL VALVE IN CENTERED POSITION PUSH TO ENGAGE PRIMARY CLUTCH.
- C. MANUAL DIRECTIONAL CONTROL VALVE MODE SWITCH.
 - 1. SWITCH IS NORMALLY CLOSED WHEN MANUAL DIRECTIONAL CONTROL VALVE IS IN CENTERED POSITION AND OPEN WHEN LEVER IS ACTUATED FROM CENTERED POSITION.
 - 2. CURRENT = 20 AMP MAX.
 - 3. FOR WIRING SCHEMATIC REFER TO CONTROL DRAWING.
- D. INPUT SPEED SENSOR.
 - 1. APPLY ANEUBRIC SEALANT (LOCTITE 242) TO SPEED SENSOR THREADS.
 - 2. ASSEMBLE SENSOR UNTIL CONTACTING THE GEAR TOOTH TIP AND THEN BACK OUT SENSOR "ONE" FULL TURN.
 - 3. USE JAM NUT TO SECURE THE SENSOR POSITION, TIGHTENING TORQUE 5 Nm.
- E. OUTPUT SPEED SENSOR.
 - 1. APPLY ANEUBRIC SEALANT (LOCTITE 242) TO SPEED SENSOR THREADS.
 - 2. ASSEMBLE SENSOR UNTIL CONTACTING THE GEAR TOOTH TIP AND THEN BACK OUT SENSOR "TWO" FULL TURNS.
 - 3. USE JAM NUT TO SECURE THE SENSOR POSITION, TIGHTENING TORQUE 5 Nm.
- F. UNLESS OTHERWISE SPECIFIED FASTENER TORQUE VALUES PER S574 STANDARD.
- G. REFERENCE S930 FOR TWIN DISC REQUIREMENTS FOR PRESSURE AND TEMPERATURE ALARM LEVELS.
- H. ALL POINTS AVAILABLE FOR TESTING CODED.





CUSTOMER NOTES:

- OIL CAPACITY 6.35 L. LESS HOSES AND HEAT EXCHANGER.
- MAXIMUM INPUT SPEED 3000 rpm.
- RIGHT HAND ENGINE ROTATION ONLY.
- LIVE PTO (SAE J744C 127-4&2; 32-4) PX12829
- COMPANION FLANGE GROUP PX12834

EQUIPMENT SHOWN:

- PX12818 INPUT GROUP WITH SAE #1/SAE 355 VULKAN VL2611S W/ MASS RING
- GP VALVE WITH EC050 CONTROL MODULE
- PRESSURE SENSOR

FIRST USE ASSEMBLY: FIRST USE MODEL: MCX-5096A SIMILAR TO PX12360		WEIGHT: 251.3 kg  THIRD ANGLE PROJECTION	MATERIAL: HEAT TREAT:	DATE: 07/01/2011 SCALE: 1:2 DRAWN BY: MG CHECKED BY: AJ	 RACINE, WI 53403 - USA
METRIC NOTE: THIS FIRST CONTACT PROPRIETARY INFORMATION AND IS NOT TO BE REPRODUCED OR TRANSMITTED IN ANY FORM OR BY ANY MEANS, ELECTRONIC OR MECHANICAL, INCLUDING PHOTOCOPYING, RECORDING, OR BY ANY INFORMATION STORAGE AND RETRIEVAL SYSTEM.		UNLESS OTHERWISE SPECIFIED MACHINED DIMENSIONS X.X ±0.25 X.X.X ±0.125	DESCRIPTION:	PX12820	