

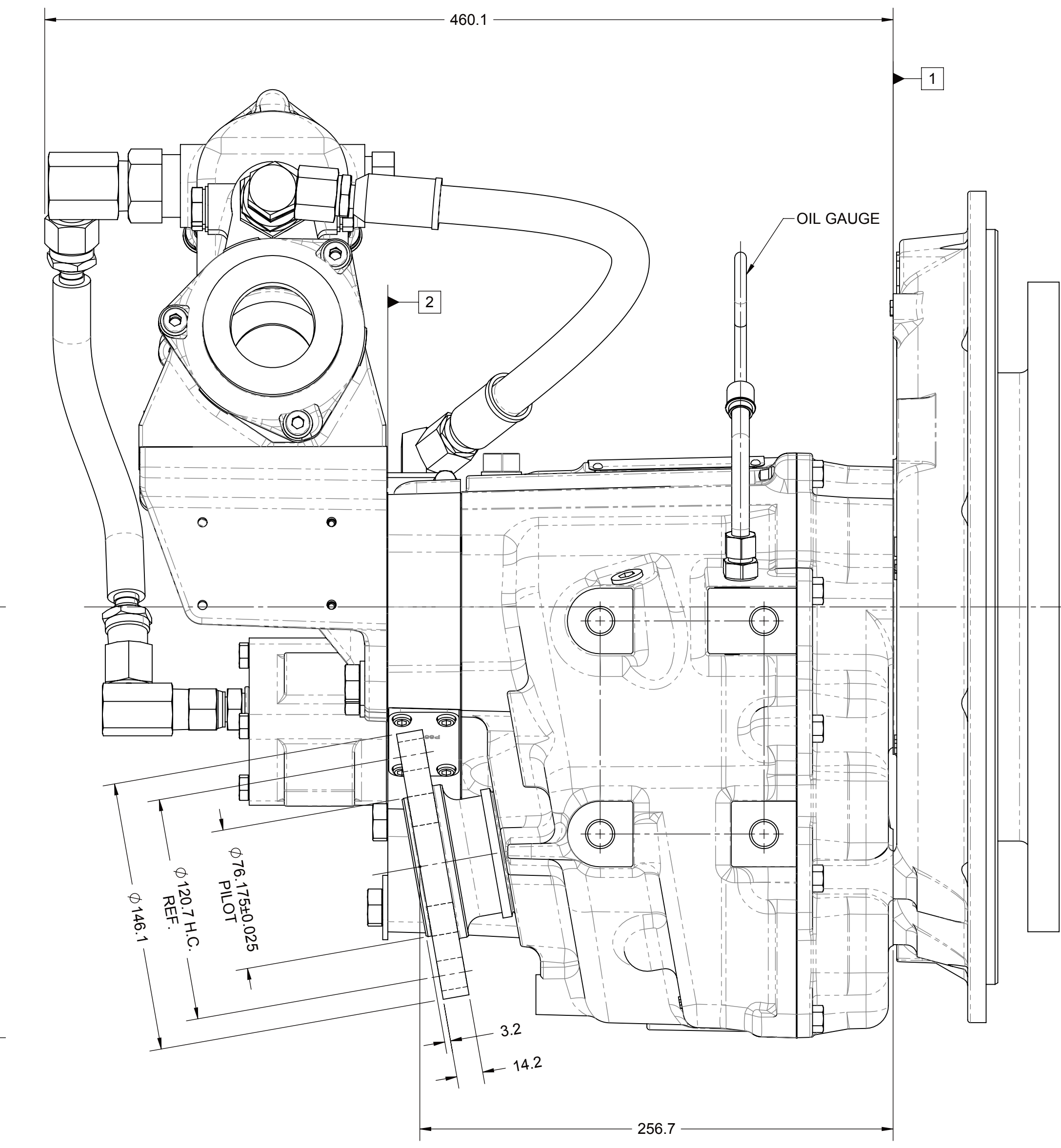
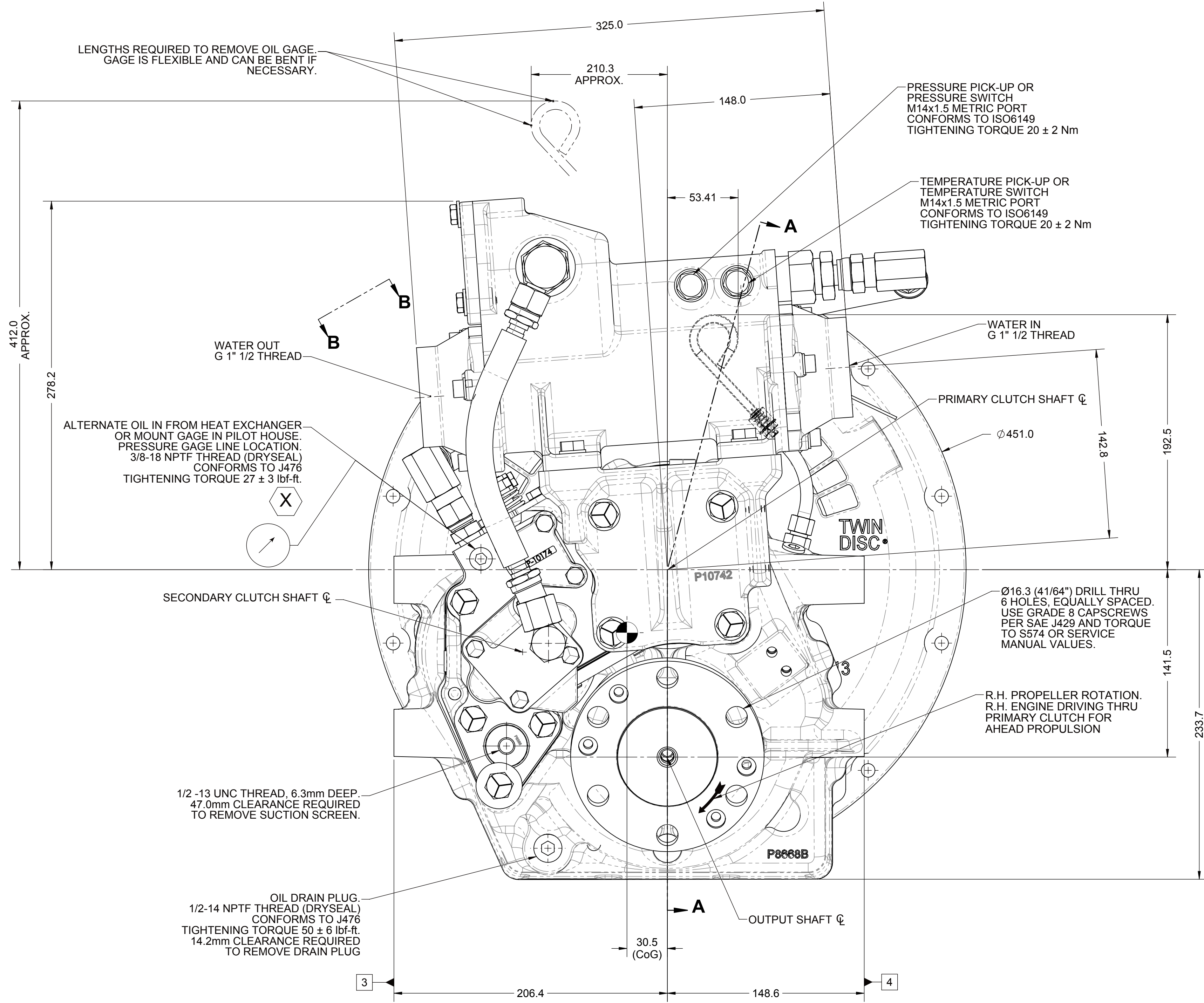
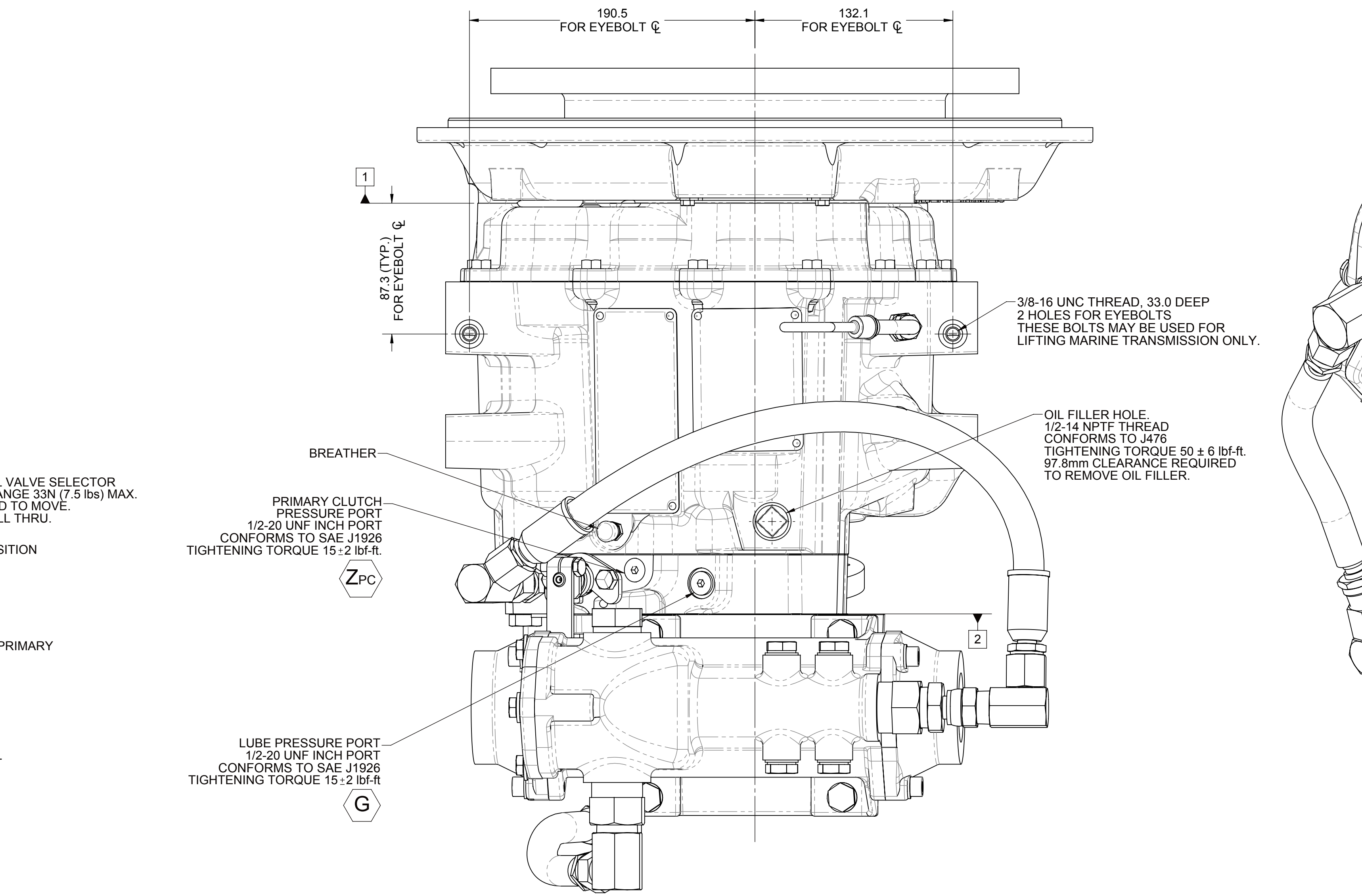
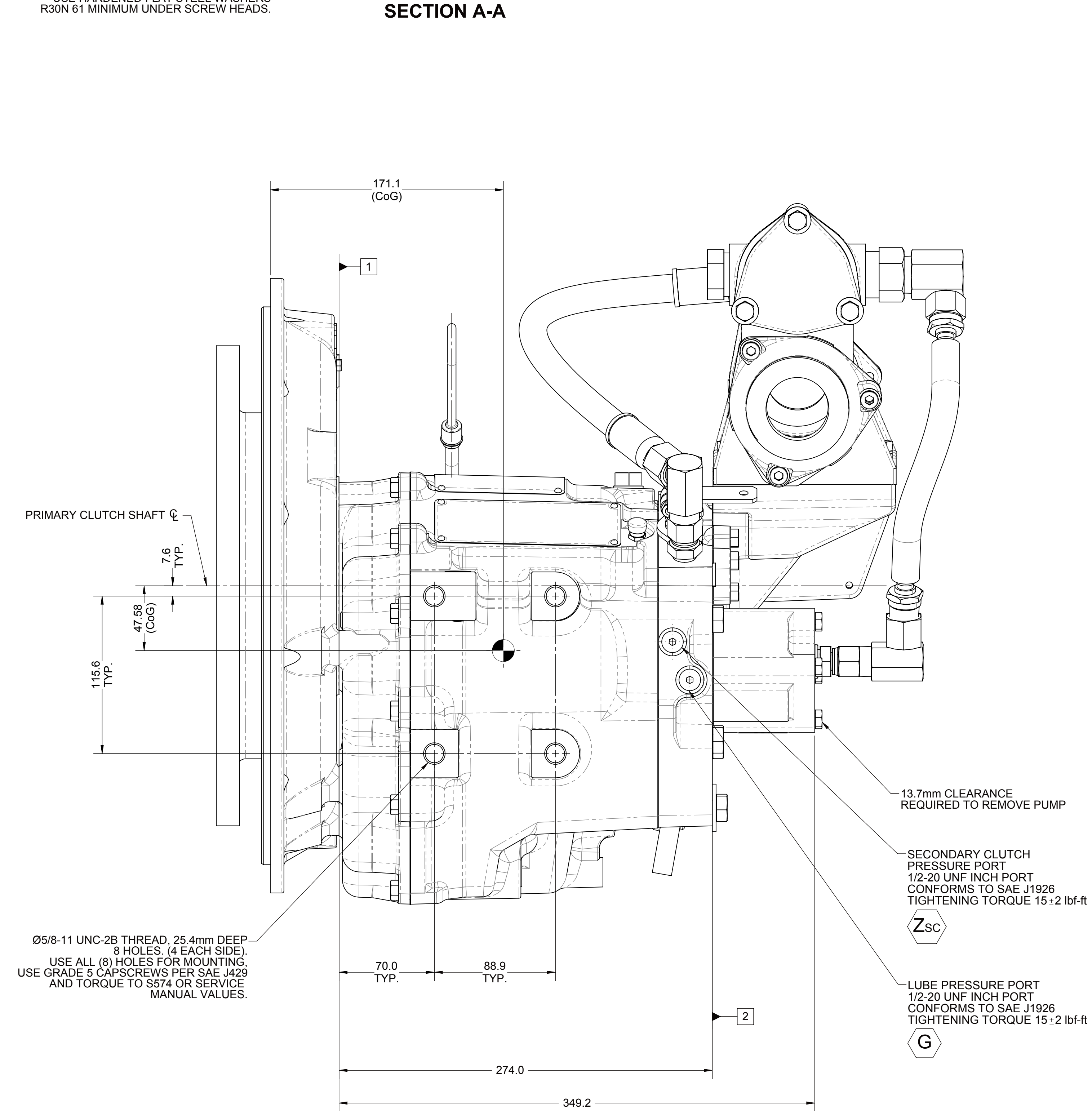
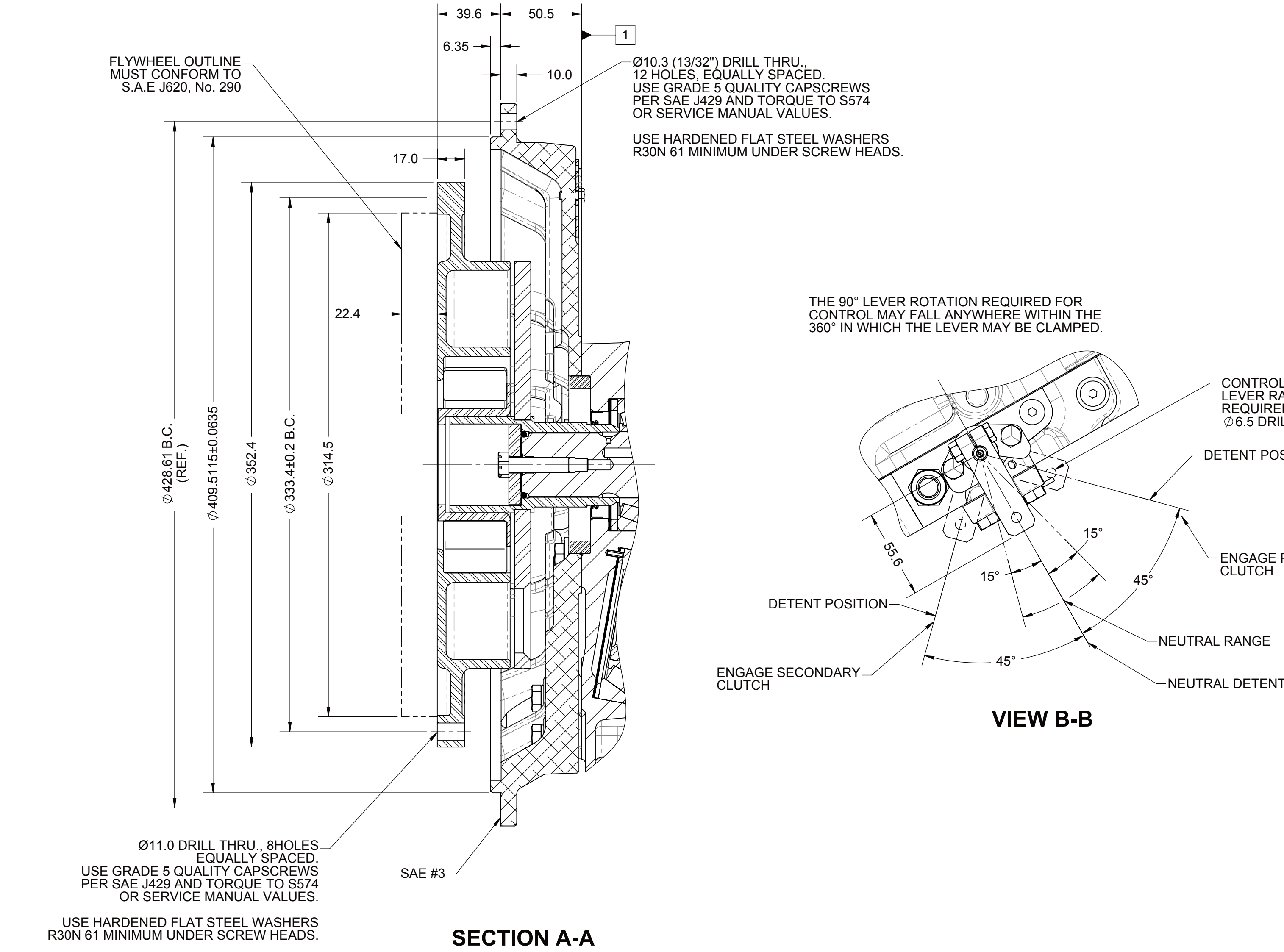
- 1

INPUT GROUP REFERENCE PLANE
- 2

PTO ADAPTER MOUNTING FACE
- 3

LEFT MOUNTING BRACKET FACE
- 4

RIGHT MOUNTING BRACKET FACE



NOTE:
ALL POINTS AVAILABLE FOR TESTING ARE CODED

- EQUIPMENT SHOWN:
- MG-5050A PER PX12730 ASSEMBLY
 - SAE #3/SAE 290 CENTA CF-DS-40 COUPLING
 - PRESSURE RATE OF RISE VALVE STANDARD MANUAL CONTROL (WITH NEUTRAL PRESSURE REGULATION)
 - HEAT EXCHANGER MOUNTED AT REAR OF THE UNIT

FIRST USE ASSEMBLY PX12730	WEIGHT: 93.5 lb	THIRD ANGLE PROJECTION	DATE: 04/20/2012
FIRST USE MODEL MG-5050A	SCALE: 1:2	DESIGNED DIMENSIONS	PRODUCTION
SIMILAR TO:	UNLESS OTHERWISE SPECIFIED DIMENSIONS ARE IN INCHES	HEAT TREAT:	
	XX XX XX	DRAWN BY: NK	
	XX XX XX	CHECKED BY: JMF	
	XX XX XX	APPROVED BY: JMF	
	XX XX XX	DATE: A0	
	XX XX XX	SHEET: 1 OF 1	
	XX XX XX	REV: -	

NDWF-50081

04/05/2017

REV: -

CHANGE NO.

DATE

TWIN(DISC)

RACINE, WI 53403 - USA

PX13019

INSTALLATION MG-5050A