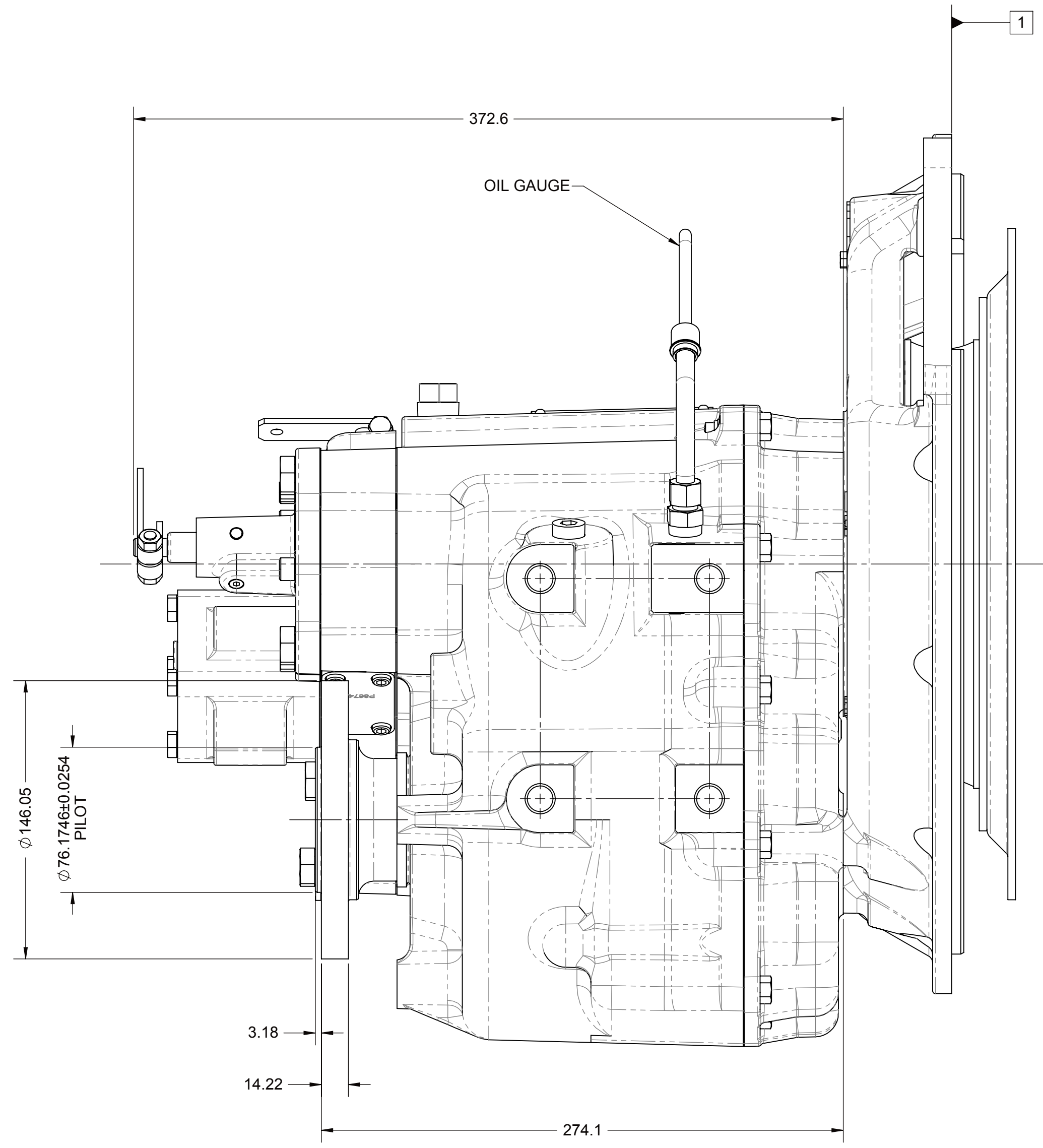
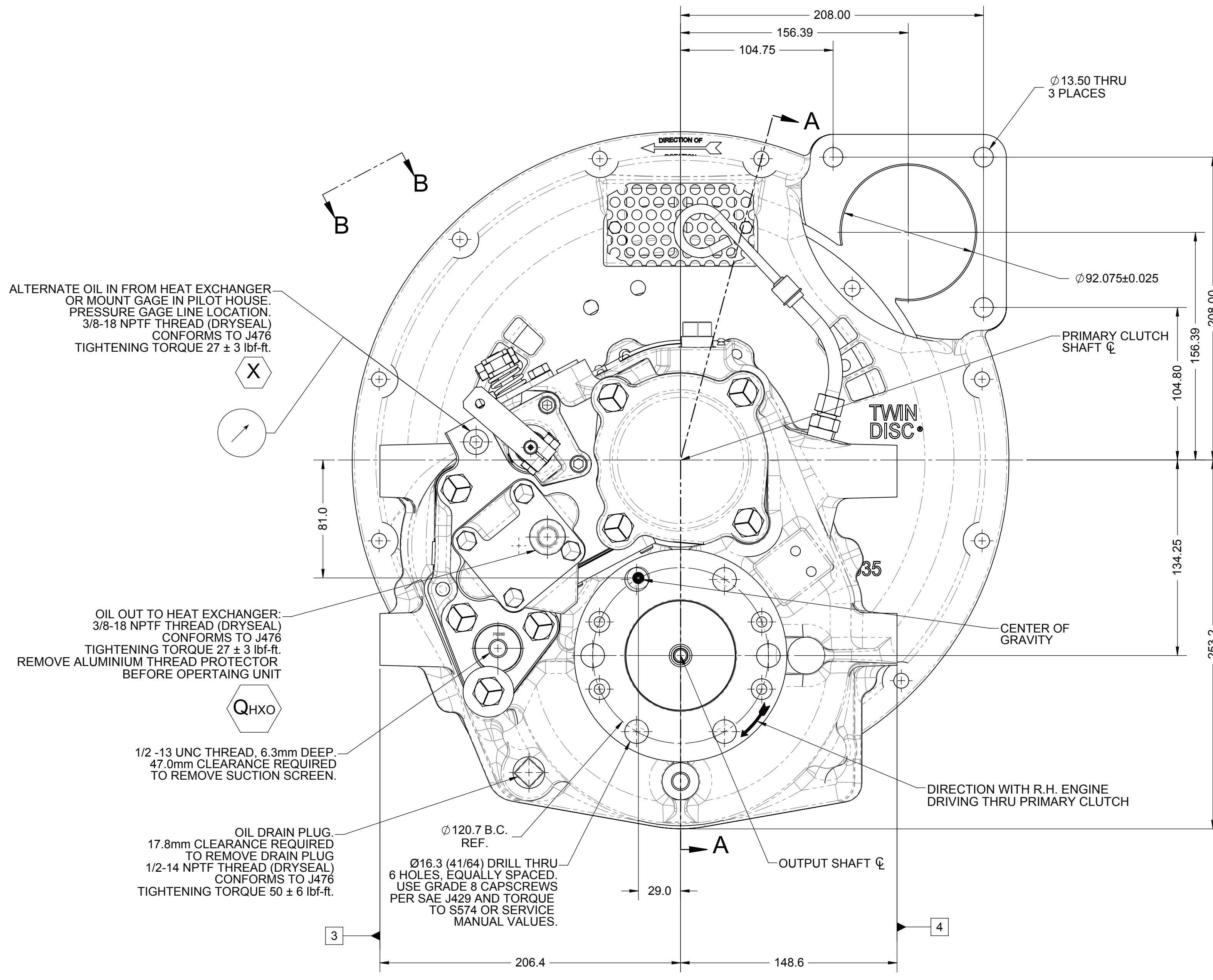
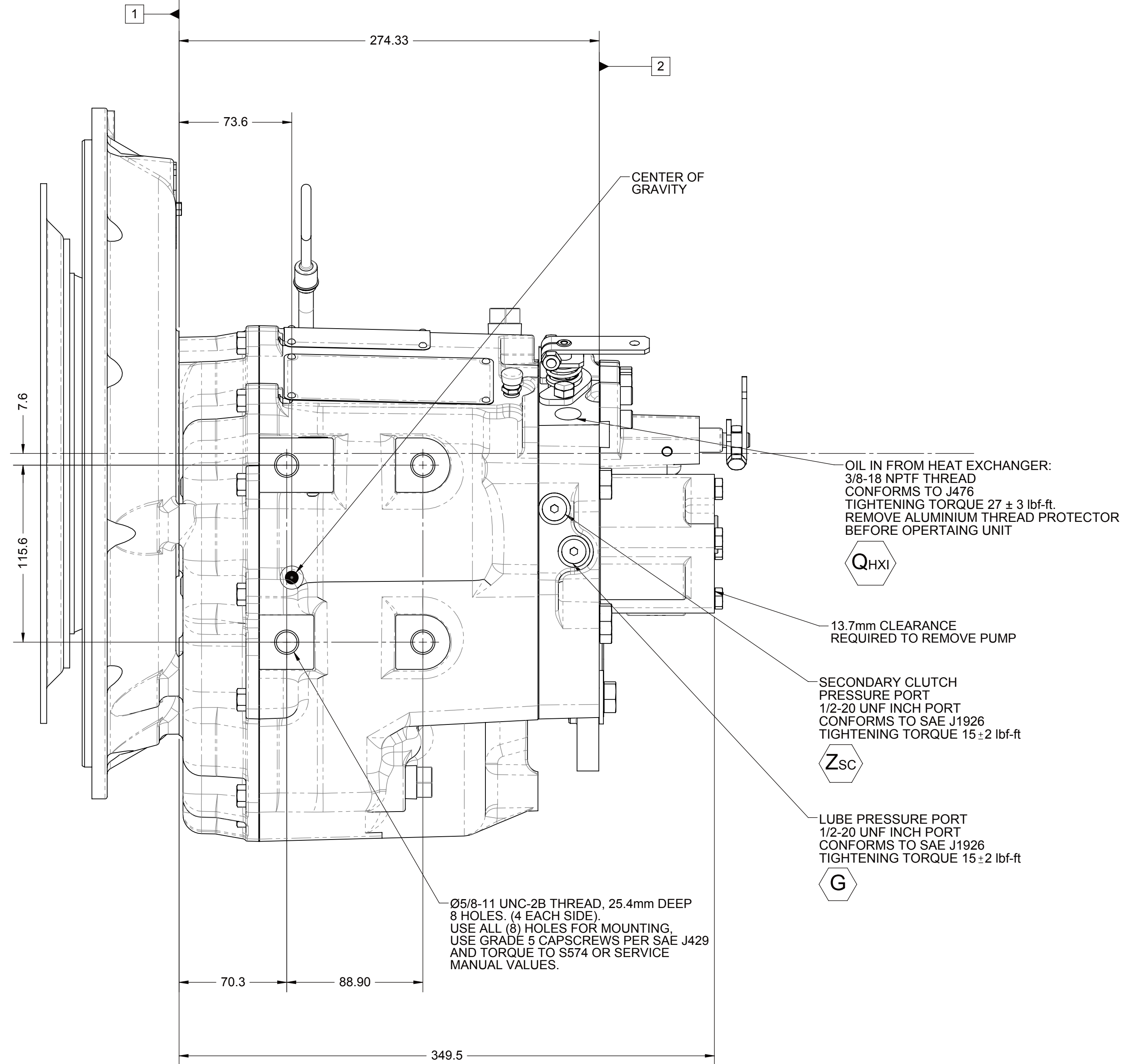
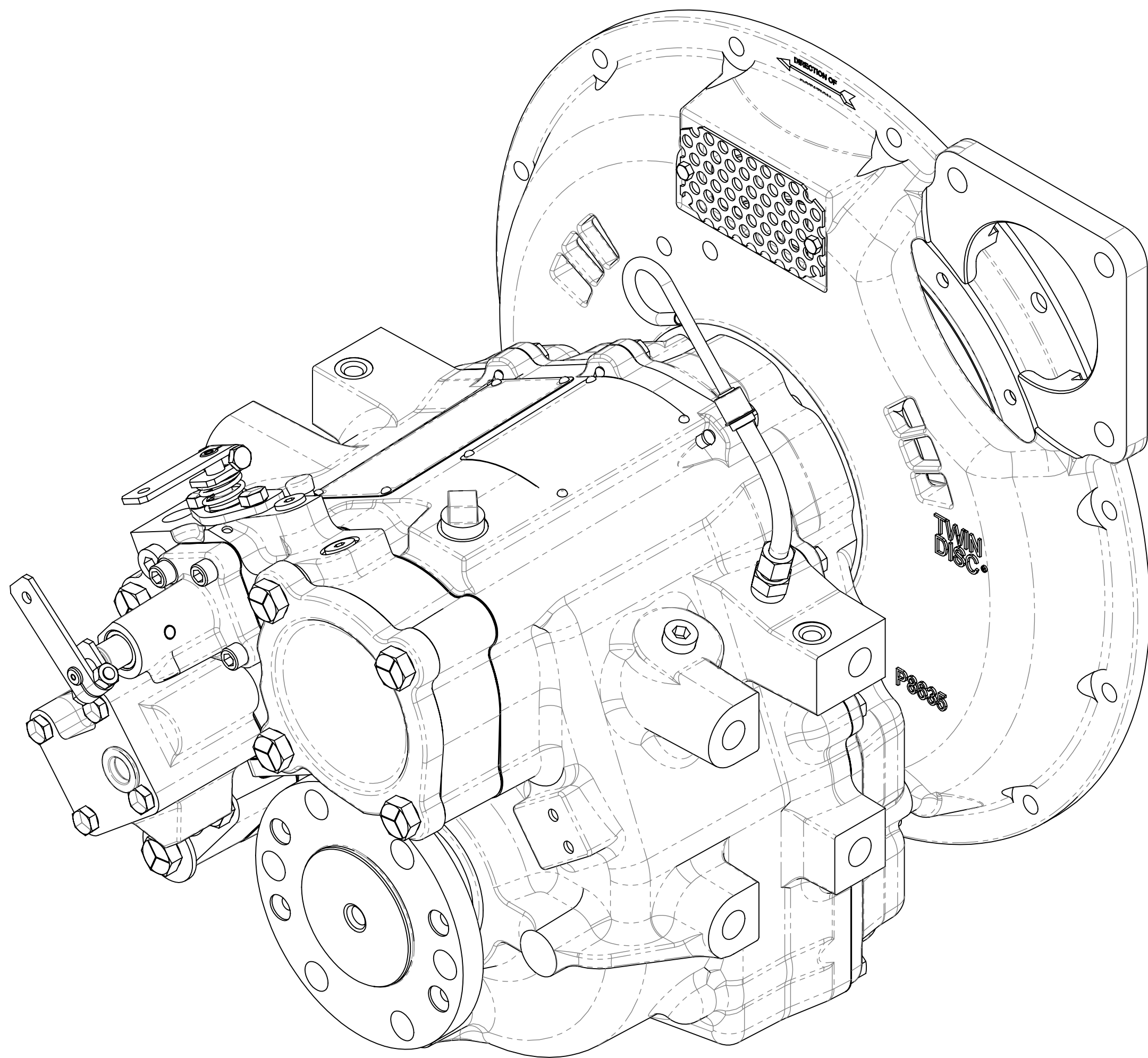
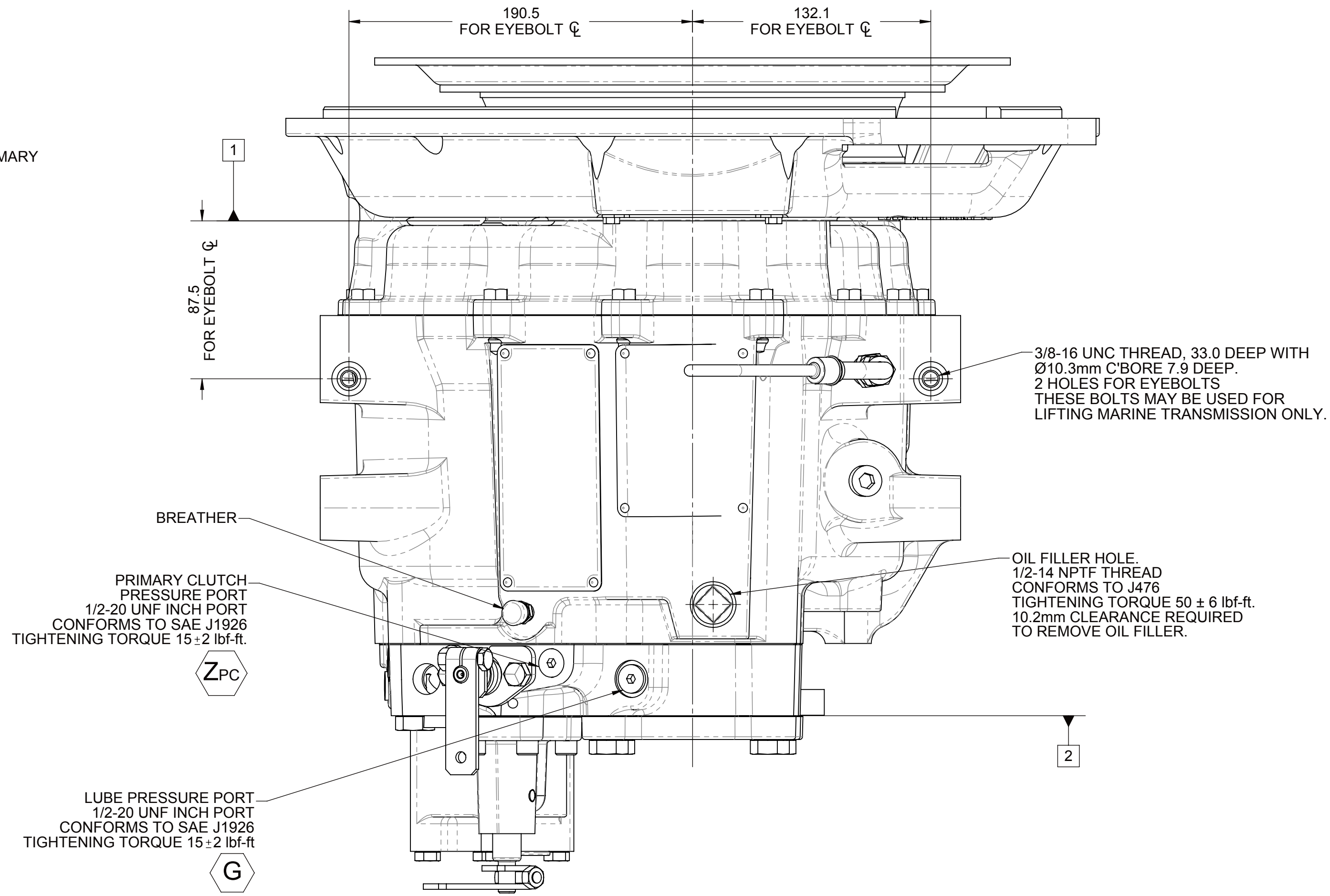
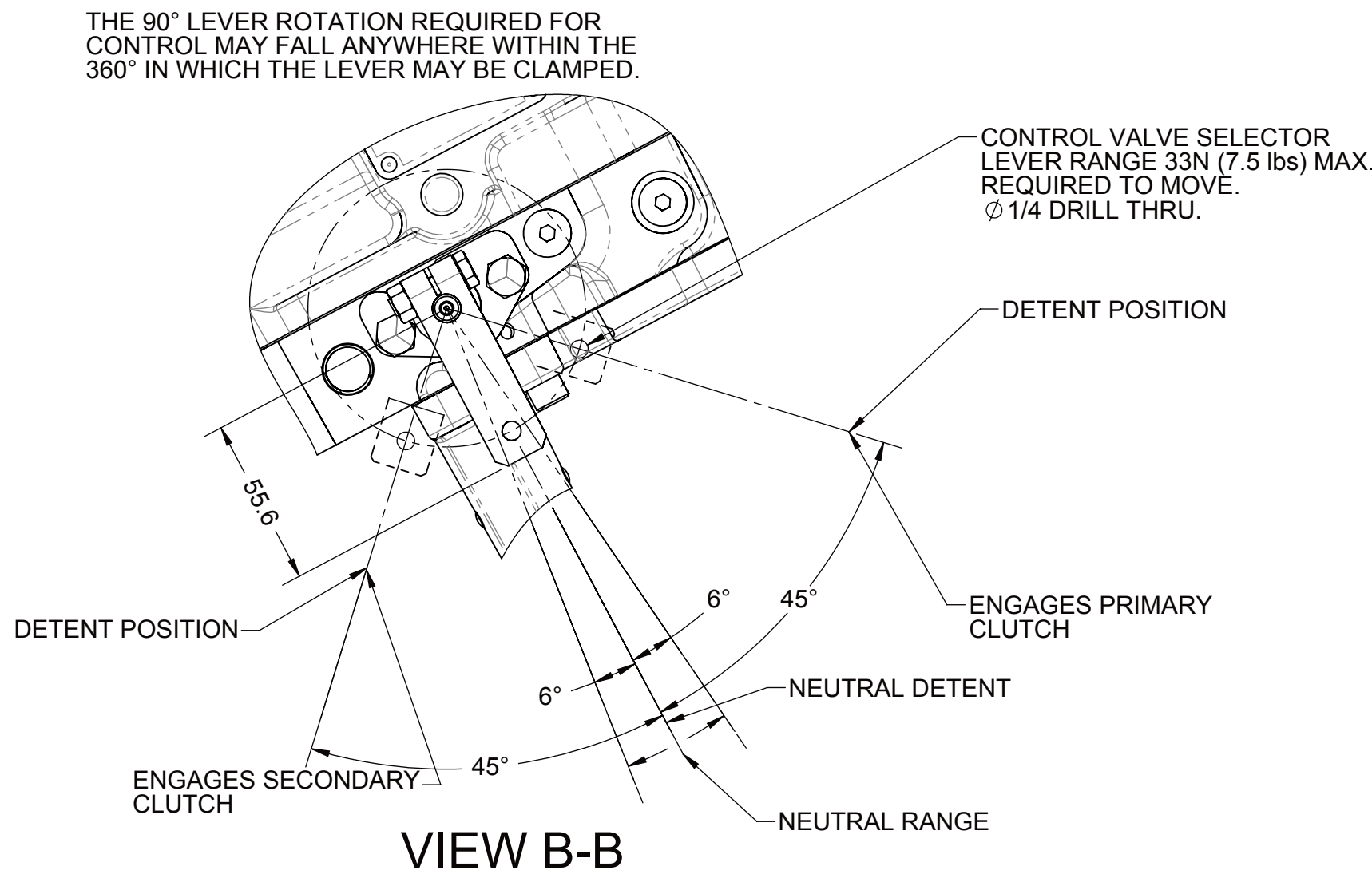
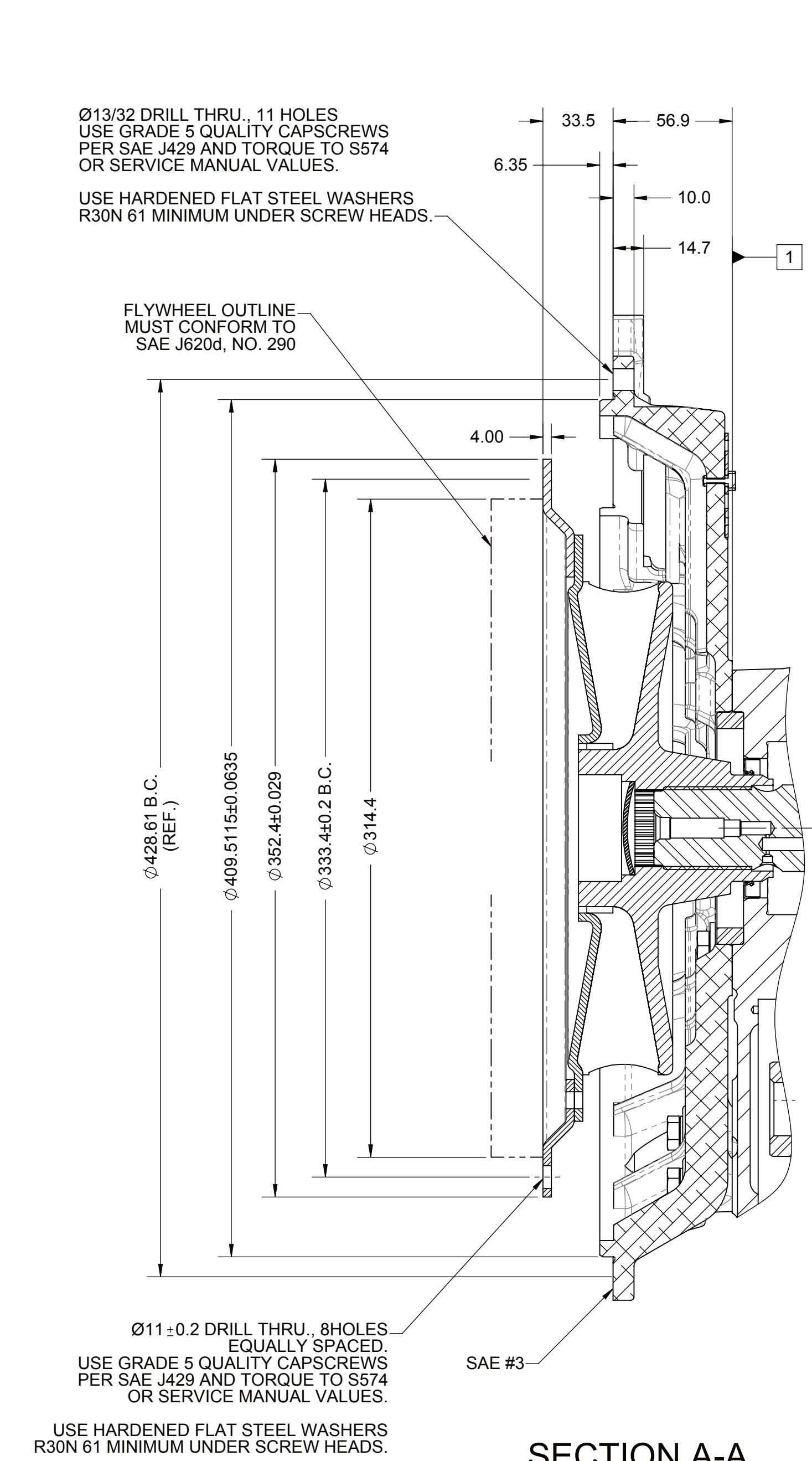


- 1 INPUT GROUP REFERENCE PLANE
- 2 PTO ADAPTER MOUNTING FACE
- 3 LEFT MOUNTING BRACKET FACE
- 4 RIGHT MOUNTING BRACKET FACE



EQUIPMENT SHOWN:

- MG-5050SC PER PX12700 ASSEMBLY
- SAE #3 CAT/SAE 200 VULCAN VAE-3200 SERIES
- MECHANICAL CONTROL VALVE WITH MECHANICAL TROLLING VALVE

NOTE:

- ALL POINTS AVAILABLE FOR TESTING ARE CODED
- ALL BOLTS AND FITTINGS TIGHTENED PER S574 OR SERVICE
MANUAL VALUES UNLESS OTHERWISE SPECIFIED.

FIRST USE ASSEMBLY:		WEIGHT: 91.0 kg	THIRD ANGLE PROJECTION	MATERIAL:	DATE: 01/11/2013
FIRST USE MODEL:		REF.	SCALE: 1:2	HEAT TREAT:	01/11/2013
SIMILAR TO:		UNLESS OTHERWISE SPECIFIED	UNLESS OTHERWISE SPECIFIED	UNLESS OTHERWISE SPECIFIED	UNLESS OTHERWISE SPECIFIED
DRAWN BY: JLM		ALL ANGLES AND TOLERANCES 11°	ALL ANGLES AND TOLERANCES 11°	ALL ANGLES AND TOLERANCES 11°	ALL ANGLES AND TOLERANCES 11°
CHECKED BY: ALC		GEOMETRIC TOLERANCING	GEOMETRIC TOLERANCING	GEOMETRIC TOLERANCING	GEOMETRIC TOLERANCING
APPROVED BY: ALC		DATE: 01/11/2013	DATE: 01/11/2013	DATE: 01/11/2013	DATE: 01/11/2013
DESCRIPTION: INSTALLATION MG-5050SC		SHEET: 1 OF 1	SHEET: 1 OF 1	SHEET: 1 OF 1	SHEET: 1 OF 1

NDWIF-50065	01/11/2013
REV: CHANGE NO.	DATE
TWIN(DISC)	
RACINE, WI 53403 - USA	
PX13021A	
SHEET: 1 OF 1	