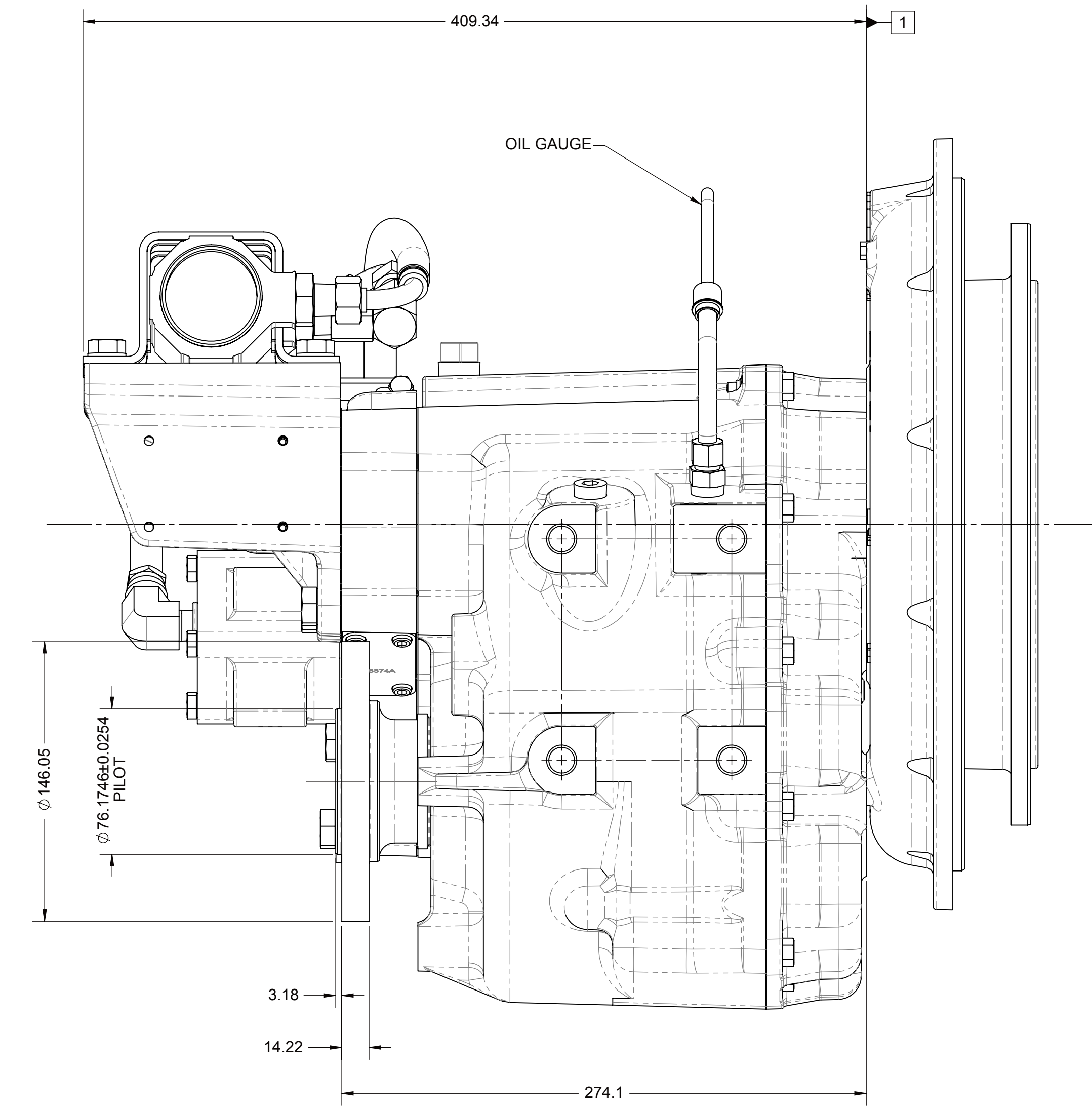
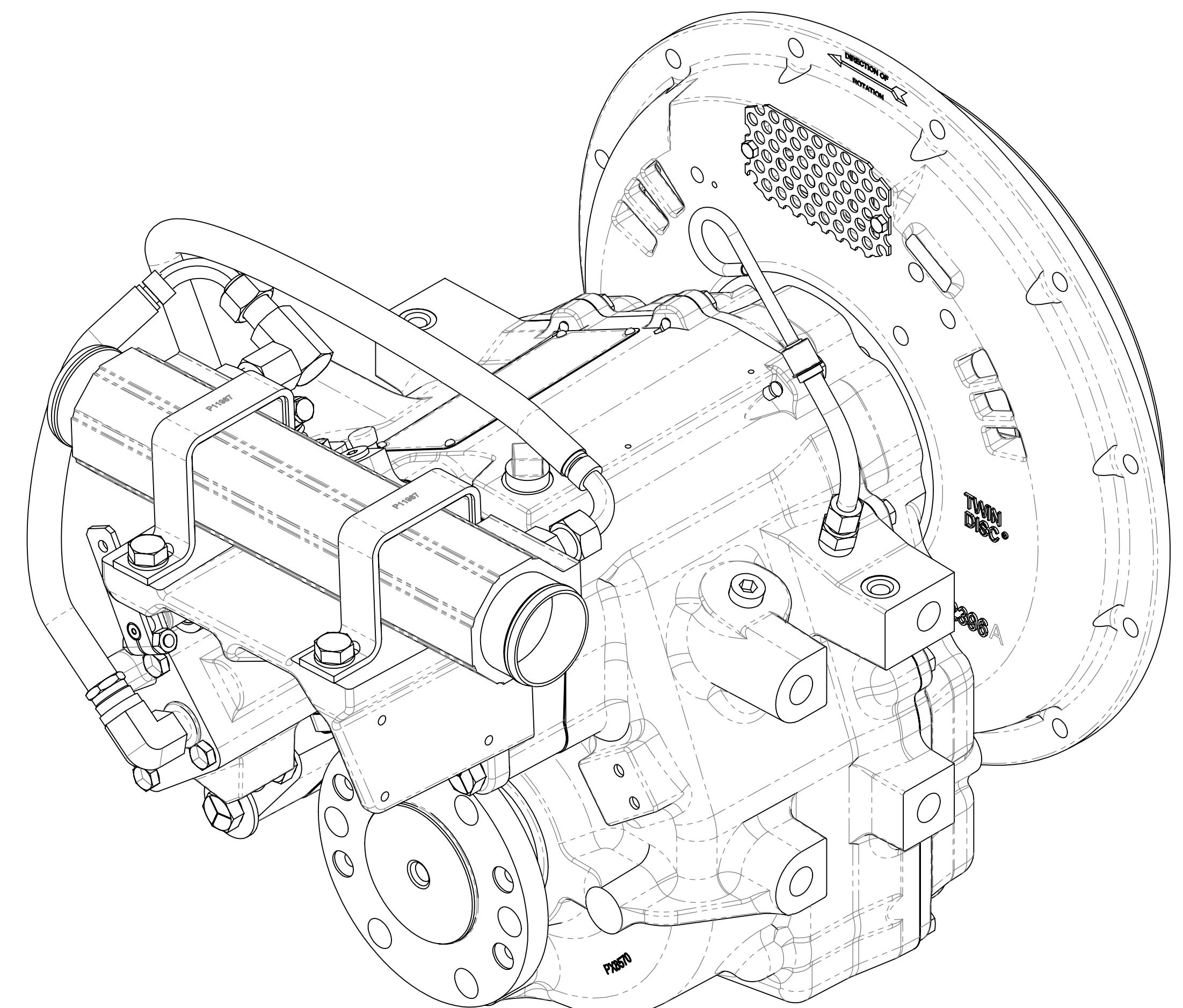
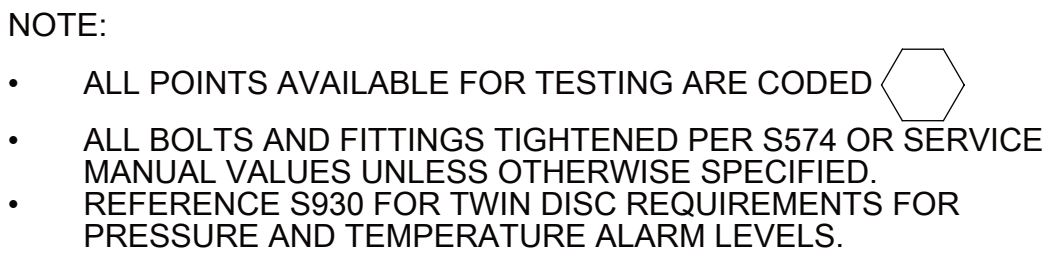



- 8  
7  
6  
5  
4  
3  
2  
1



**EQUIPMENT SHOWN:**

- MG-5050SC PER PX12700 ASSEMBLY
- SAE #4/CENTA CF-R-136-HR FOR VOLVO D6 ENGINE
- MECHANICAL CONTROL VALVE WITH MECHANICAL TROLLING VALVE
- MOUNTED PM11990 HEAT EXCHANGER

NOTED BY 11/14/2014 TWIN DISC

FIRST USE ASSEMBLY: FIRST USE MODEL: BANGALAY TO:		93.26" 180°		THIRD ANGLE PROJECTION	MATERIAL:  REAT TREAT:	DATE: 08/12/2014	REV - NDWF-50303 11/14/2014 CHANGE MG
<div><div>METRIC</div><div>NOTICE: THIS DRAWING CONTAINS PROPRIETARY INFORMATION AND IS THE PROPERTY OF TWIN DISC, INCORPORATED. IT IS NOT TO BE REPRODUCED OR TRANSMITTED IN ANY FORM OR BY ANY MEANS, ELECTRONIC OR MECHANICAL, WITHOUT PERMISSION IN WRITING FROM TWIN DISC, INCORPORATED. THIS DRAWING IS LOANED TO YOU BY TWIN DISC, INCORPORATED AND IS NOT TO BE REPRODUCED OR TRANSMITTED IN ANY FORM OR BY ANY MEANS, ELECTRONIC OR MECHANICAL, WITHOUT PERMISSION IN WRITING FROM TWIN DISC, INCORPORATED.</div></div>		UNLESS OTHERWISE SPECIFIED MAXIMUM ALLOWED TOLERANCES: FRACTIONS DECIMALS ANGLES X.X .01 1/16 15° X.XX .005 1/32 10° ALL ANGLES TO TOLERANCES ±1° UNLESS OTHERWISE SPECIFIED PER AISC 360-16		DESCRIPTION:  INSTALLATION MG-5050SC		TWIN DISC RACING, NY 53053 - USA	
						PX13021B	
						DRAWN BY: TS CHECKED BY: DV APPROVED BY: DV	DWG NO. A0 SHEET 1 OF 1 REV -