

- 1 INPUT GROUP REFERENCE PLANE
- 2 PTO ADAPTER MOUNTING FACE
- 3 LEFT MOUNTING BRACKET FACE
- 4 RIGHT MOUNTING BRACKET FACE
- 5 LIVE PTO PUMP MOUNTING FACE

APPLICATION NOTES:

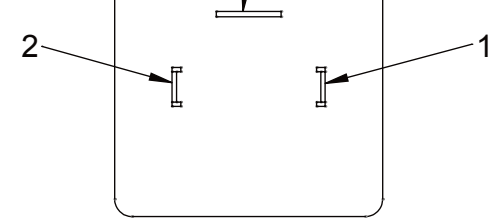
- A. 1. MANUAL OVERRIDE VALVE OPERATION
 - a. 1. THE MANUAL OVERRIDE FEATURE FOR THE PRIMARY AND SECONDARY SOLENOIDS MUST NEVER BE ENGAGED SIMULTANEOUSLY
 - b. 1. THE MANUAL OVERRIDE BUTTON FOR BOTH THE PRIMARY AND SECONDARY SOLENOIDS MUST BE IN THE NEUTRAL POSITION TO OPERATE EITHER SOLENOID ELECTRICALLY
 - c. 2. TO ENGAGE PRIMARY CLUTCH USING THE MANUAL OVERRIDE
 - a. REMOVE PROTECTIVE CAP FROM THE PRIMARY SOLENOID
 - b. PUSH BUTTON DOWN
 - c. CONTINUE TO PUSH BUTTON AND ROTATE CLOCKWISE 180°
 - d. RELEASE BUTTON
 - d. 2. TO ENGAGE SECONDARY CLUTCH USING THE MANUAL OVERRIDE
 - a. REMOVE PROTECTIVE CAP FROM THE SECONDARY SOLENOID
 - b. PUSH BUTTON DOWN
 - c. CONTINUE TO PUSH BUTTON AND ROTATE CLOCKWISE 180°
 - d. RELEASE BUTTON
5. TO RETURN EITHER OF THE PRIMARY OR SECONDARY MANUAL OVERRIDE TO THE NEUTRAL POSITION:
 - a. PUSH BUTTON DOWN
 - b. CONTINUE TO PUSH BUTTON AND ROTATE COUNTER-CLOCKWISE 180°
 - c. RELEASE BUTTON
 - d. INSTALL PROTECTIVE CAP OVER THE MANUAL OVERRIDE BUTTON

- B. REFERENCE S930 FOR TWIN DISC REQUIREMENTS FOR PRESSURE AND TEMPERATURE ALARM LEVELS (IF ANY). (A)

- C. ALL POINTS AVAILABLE FOR TESTING ARE CODED

WIRING DIAGRAM :

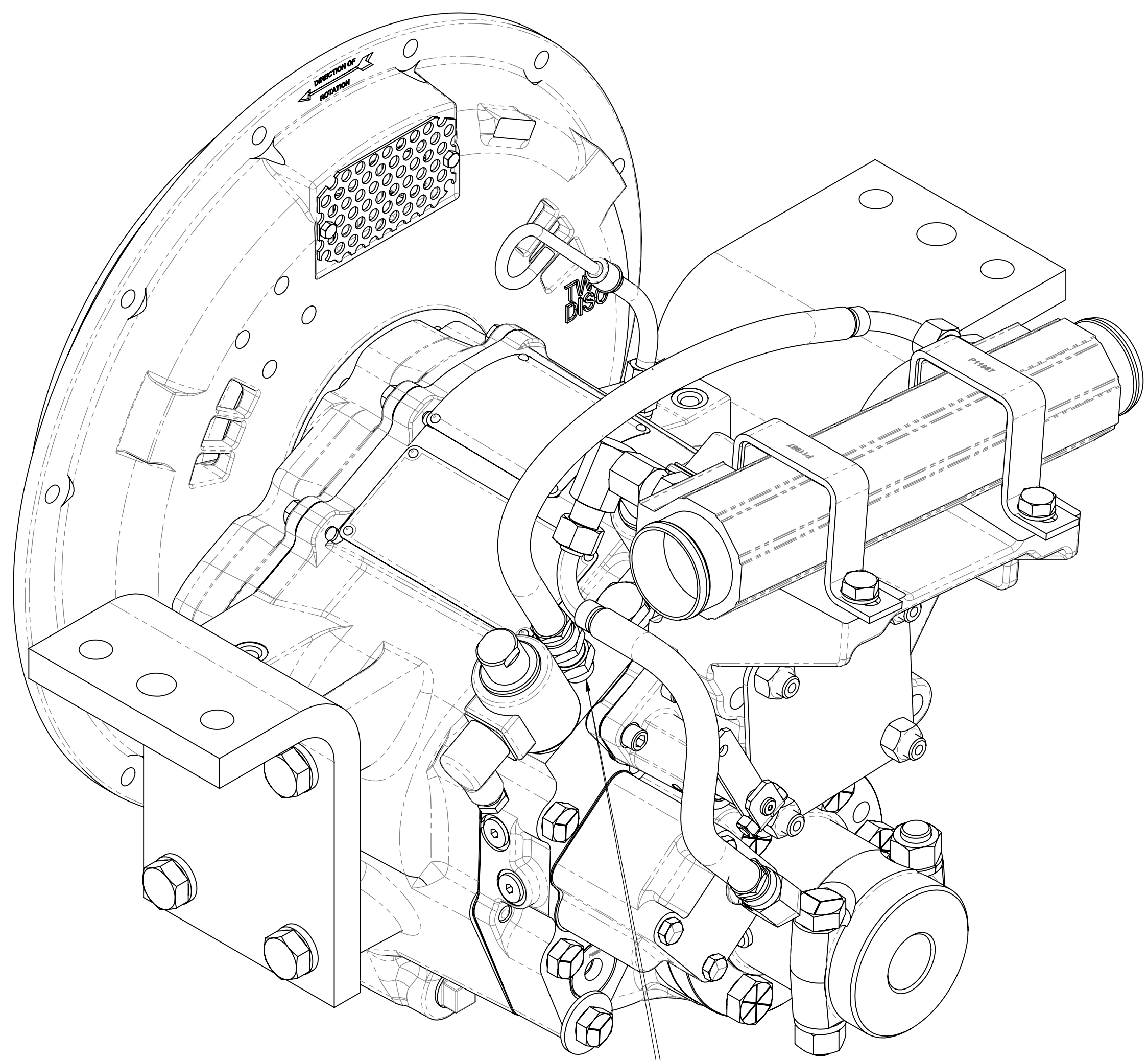
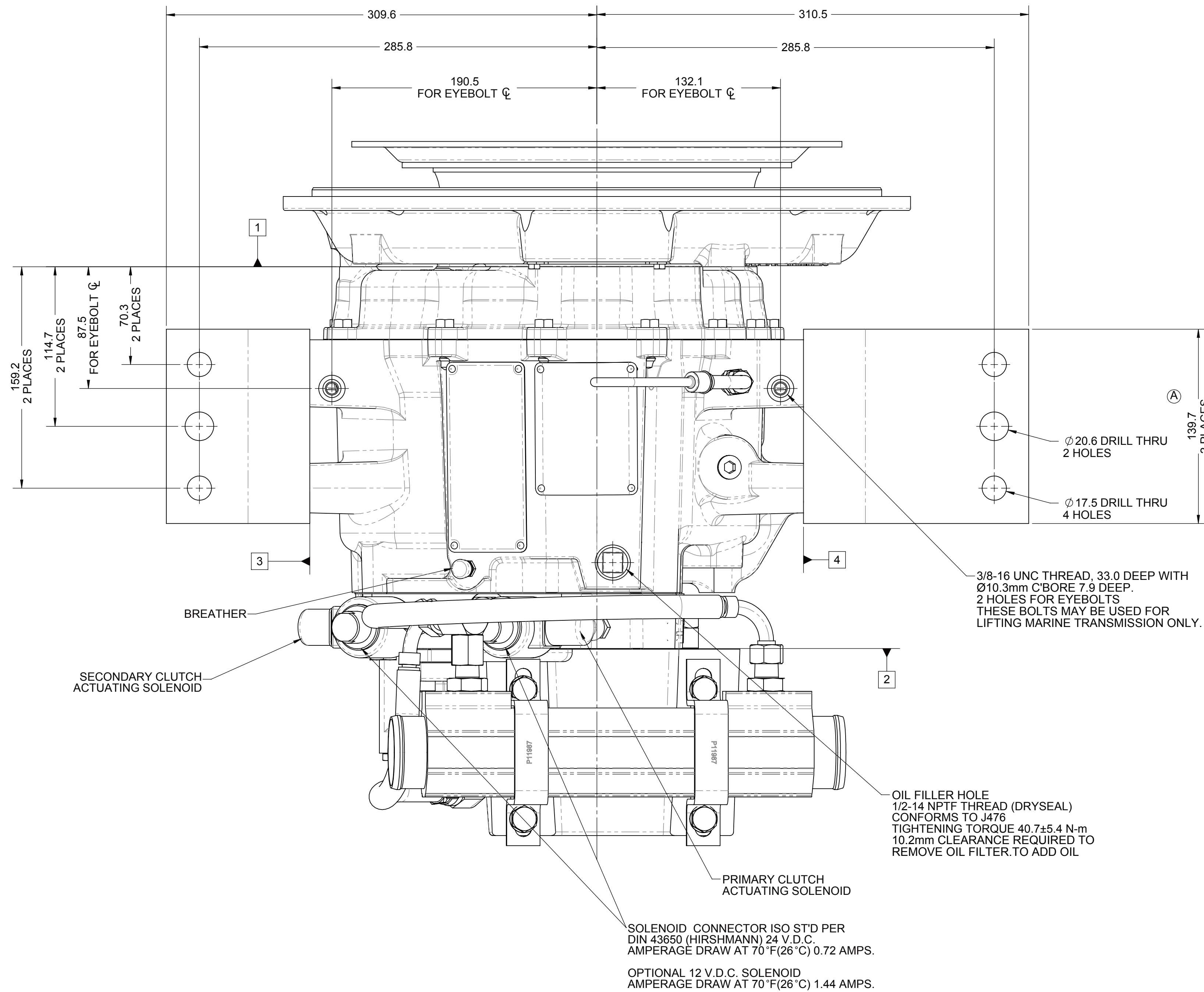
TERMINAL 1 :+ VDC
 TERMINAL 2 :0 VDC
 TERMINAL 3 :GROUND



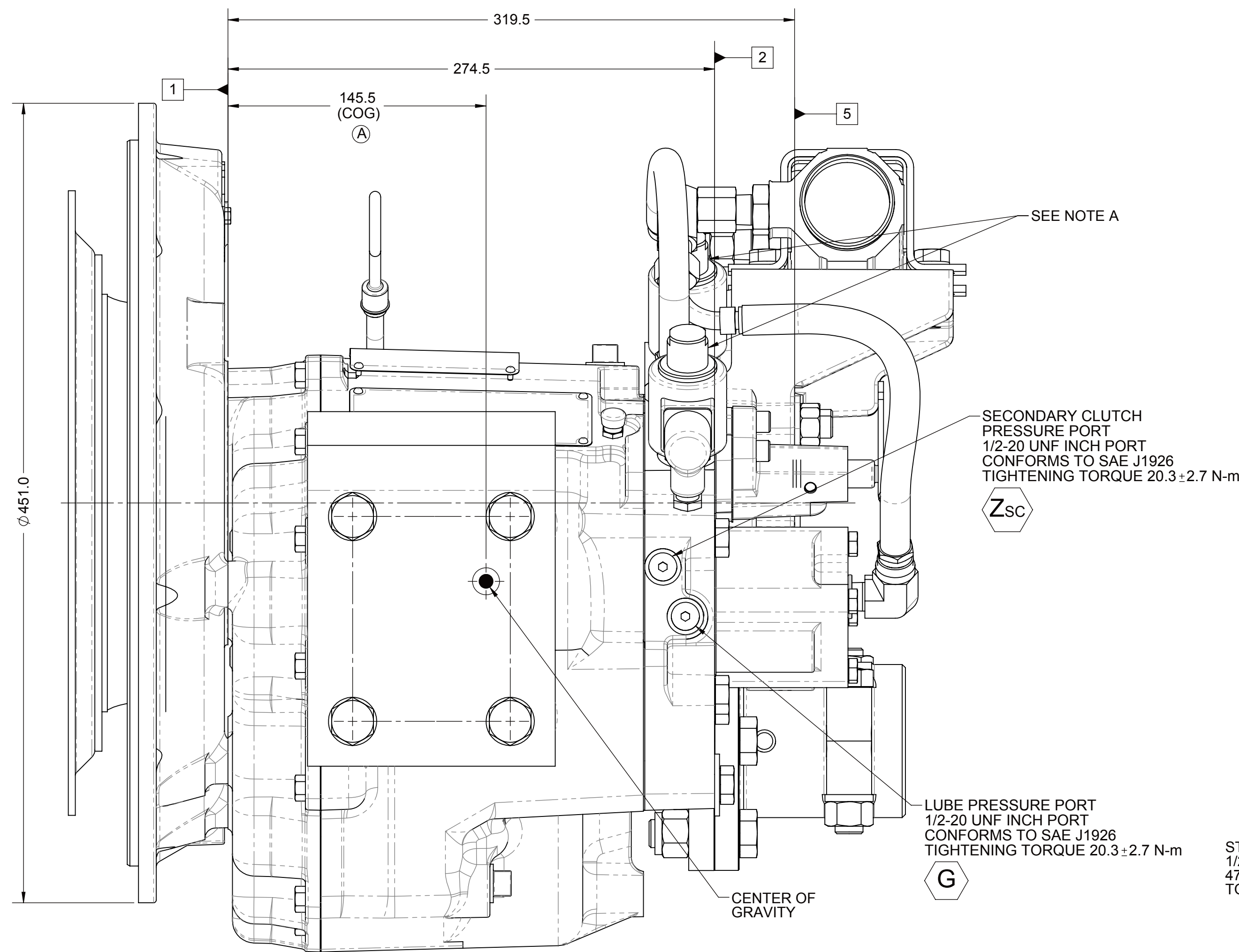
11-0.2 DRILL THRU., 8HOLES
EQUALLY SPACED.
USE GRADE 5 QUALITY CAPSCREWS
OR SAE J429 AND TORQUE TO S574
OR SERVICE MANUAL VALUES.
USE HARDENED FLAT STEEL WASHERS
30N 61 MINIMUM UNDER SCREW HEADS

SAE #3 HOUSING MOUNTING FACE
MUST CONFORM TO SAE J617

SECTION A-A



MAIN PRESSURE PORT
3/8-18 NPTF THREAD (DRYSEAL)
A CONNECT OIL PRESSURE GAUGE LINE HERE (USE TEE ADAPTOR)
TIGHTENING TORQUE 37 ± 4 Nm

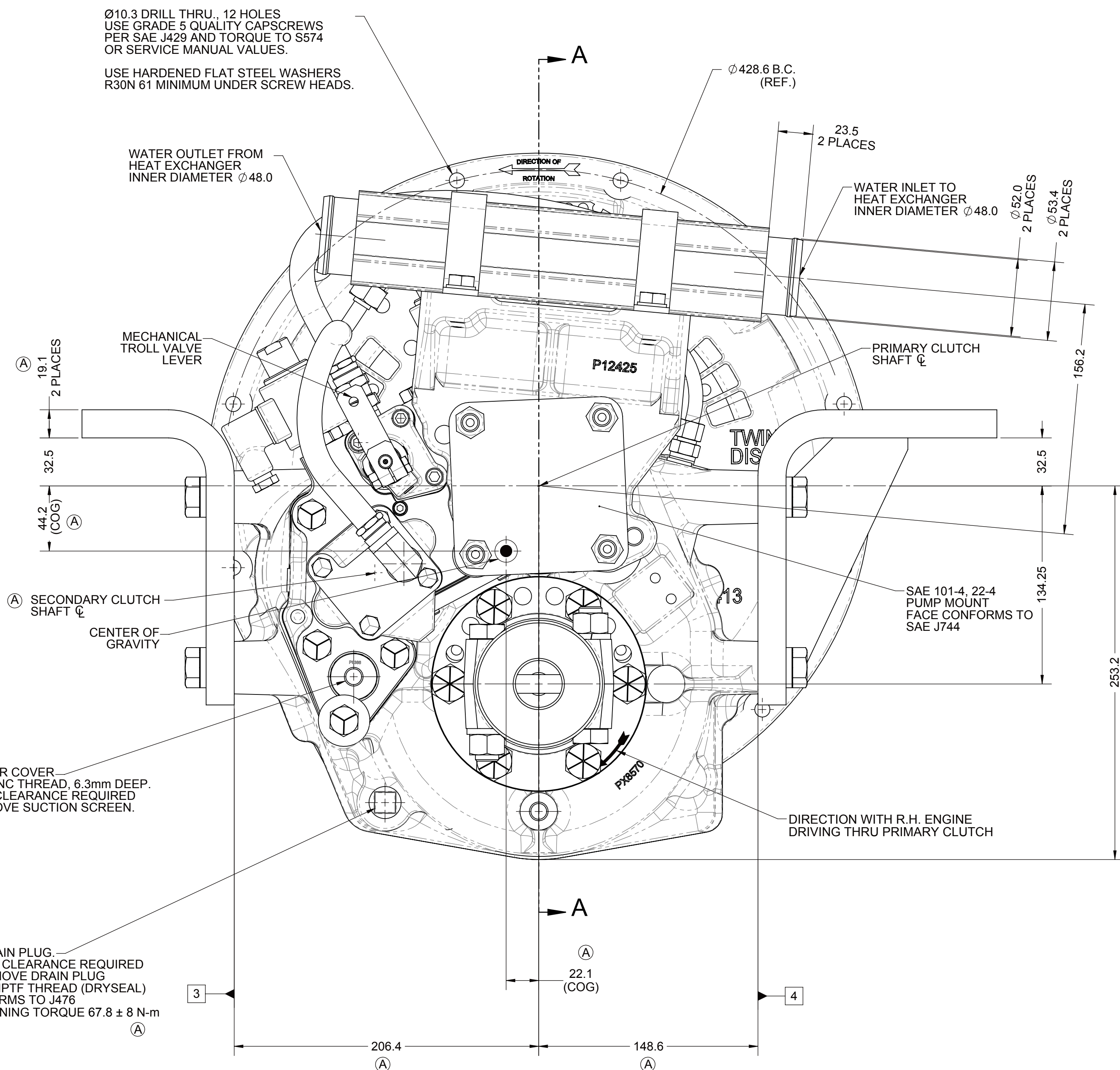


- SECONDARY CLUTCH
PRESSURE PORT
1/2-20 UNF INCH PORT
CONFORMS TO SAE J1926
TIGHTENING TORQUE 20.3 ± 2.7 N-m

- LUBE PRESSURE PORT
1/2-20 UNF INCH PORT
CONFORMS TO SAE J1926
TIGHTENING TORQUE 20.3 ± 2.7 N-m

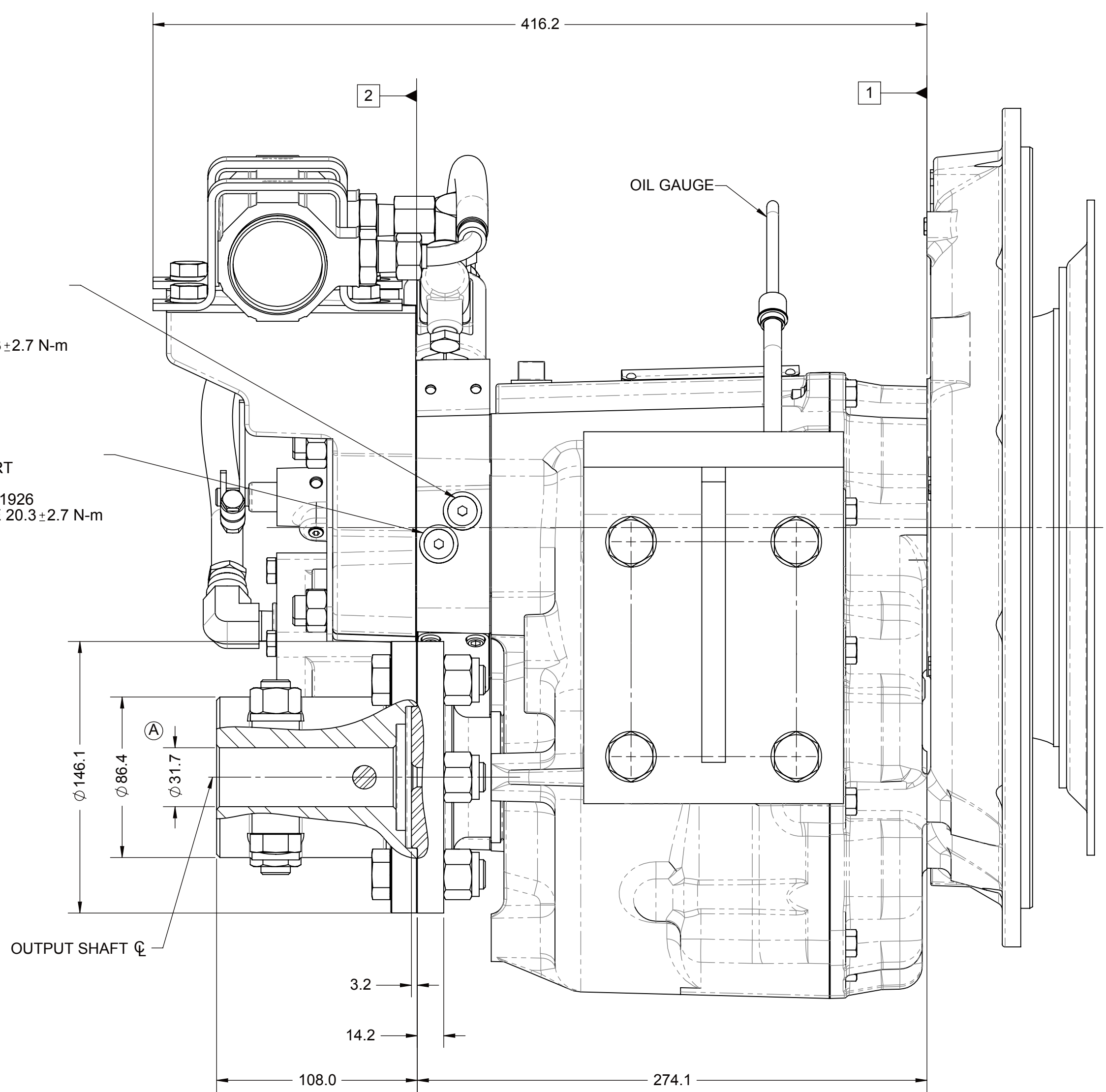
STRAINER COVER
1/2 -13 UNC THREAD, 6.3mm DEEP
47.0mm CLEARANCE REQUIRED
TO REMOVE SUCTION SCREEN.

OIL DRAIN PLUG. —
17.8mm CLEARANCE REQUIRED
TO REMOVE DRAIN PLUG
1/2-14 NPTF THREAD (DRYSEAL)
CONFORMS TO J476
TIGHTENING TORQUE 67.8 ± 8 N-m




PRIMARY CLUTCH
PRESSURE PORT
1/2-20UNF THREAD
CONFORMS TO SAE J1926
TIGHTENING TORQUE 20.3 ± 2.7 N-m

PRIMARY CLUTCH
LUBE PRESSURE PORT
1/2-20 UNF THREAD
CONFORMS TO SAE J1926
TIGHTENING TORQUE 20.3 ± 2.7 N-m



EQUIPMENT SHOWN:

- MG-5050SC PER PX12700 ASSEMBLY
- SAE #3
- SAE 290 VULKAN VKE-3210 SERIES COUPLING
- ELECTRIC CONTROL VALVE WITH MECHANICAL TROLLING VALVE
- SAE J744 101-4, 22-4 LIVE PTO
- MOUNTED PM11990 HEAT EXCHANGER
- PX8775A COMPANION FLANGE ASSEMBLY
- 1016428L MOUNTING BRACKETS

FIRST USE ASSEMBLY: FIRST USE MODEL: SIMILAR TO:		REV: 124.9 DATE: 08/26/2014  THIRD ANGLE PROJECTION	MATERIAL: HEAT TREAT:	DATE: 08/26/2014 SCALE: 1:2 DRAWN BY: MG CHECKED BY: ALC APPROVED BY: [Signature] TWIN DISC	A ECNWF-75183 11/14/2016 REV: CHANGE NO. DATE A0 SHEET 1 OF 1
METRIC NOTICE: THIS PRINT CONTAINS INFORMATION NOT FOR RELEASE AND IS NOT TO BE USED IN ANY MANNER CONSIDERED TO BE THE PROPERTY OF TWIN DISC. DISCOURAGE ANY REPRODUCTION OF THIS INFORMATION. THE TWIN DISC, INCORPORATED 10000 W. 10TH AVE. SUITE 100 DENVER, CO 80231		UNLESS OTHERWISE SPECIFIED MEASUREMENTS TO DIMENSIONS IN MILLIMETERS X.XX X.X ALL ANGLES ARE TO TOLERANCES ** GEOMETRIC TOL. ENDURING PER ASME Y14.5-2009	DESCRIPTION: INSTALLATION	DRAWING: MG CHECKED BY: ALC APPROVED BY: [Signature] TWIN DISC	PCXINE V1540S - USA RX13021C A0 SHEET 1 OF 1