

- 1 INPUT GROUP REFERENCE PLANE
- 2 PTO ADAPTER MOUNTING FACE
- 3 LEFT MOUNTING BRACKET FACE
- 4 RIGHT MOUNTING BRACKET FACE
- 5 LIVE PTO PUMP MOUNTING FACE

Ø10.3 DRILL THRU, 12 HOLES.  
USE GRADE 5 QUALITY CAPSCREWS  
PER SAE J429 AND TORQUE TO S574  
OR SERVICE MANUAL VALUES.

USE HARDENED FLAT STEEL WASHERS  
R30N 61 MINIMUM UNDER SCREW HEADS.

Ø 11.00 ± 22.00  
6 HOLES EQUALLY SPACED  
USE 8.8 PROPERTY CLASS  
QUALITY SCREWS PER ISO 898-1  
AND TORQUE PER S574 OR  
SERVICE MANUAL VALUES

APPLICATION NOTES:

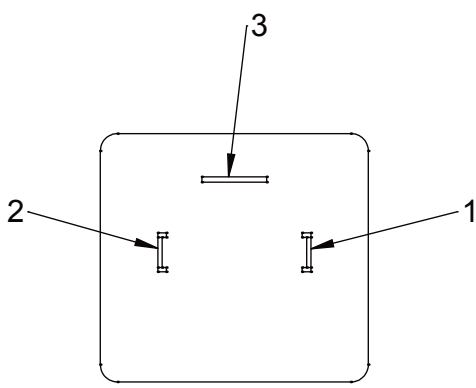
- A. MANUAL OVERRIDE VALVE OPERATION
1. THE MANUAL OVERRIDE FEATURE FOR THE PRIMARY AND SECONDARY SOLENOIDS MUST NEVER BE ENGAGED SIMULTANEOUSLY.
  2. THE MANUAL OVERRIDE BUTTON FOR BOTH THE PRIMARY AND SECONDARY SOLENOIDS MUST BE IN THE NEUTRAL POSITION TO OPERATE EITHER SOLENOID ELECTRICALLY.
  3. TO ENGAGE PRIMARY CLUTCH USING THE MANUAL OVERRIDE:
    - a. REMOVE PROTECTIVE CAP FROM THE PRIMARY SOLENOID
    - b. PUSH BUTTON DOWN
    - c. CONTINUE TO PUSH BUTTON AND ROTATE CLOCKWISE 180°
    - d. RELEASE BUTTON
  4. TO ENGAGE SECONDARY CLUTCH USING THE MANUAL OVERRIDE:
    - a. REMOVE PROTECTIVE CAP FROM THE SECONDARY SOLENOID
    - b. PUSH BUTTON DOWN
    - c. CONTINUE TO PUSH BUTTON AND ROTATE CLOCKWISE 180°
    - d. RELEASE BUTTON
  5. TO RETURN EITHER OF THE PRIMARY OR SECONDARY MANUAL OVERRIDE TO THE NEUTRAL POSITION:
    - a. PUSH BUTTON DOWN
    - b. CONTINUE TO PUSH BUTTON AND ROTATE COUNTER-CLOCKWISE 180°
    - c. RELEASE BUTTON
    - d. INSTALL PROTECTIVE CAP OVER THE MANUAL OVERRIDE BUTTON

B. REFERENCE S930 FOR TWIN DISC REQUIREMENTS FOR PRESSURE AND TEMPERATURE ALARM LEVELS (IF ANY).

C. ALL POINTS AVAILABLE FOR TESTING ARE CODED

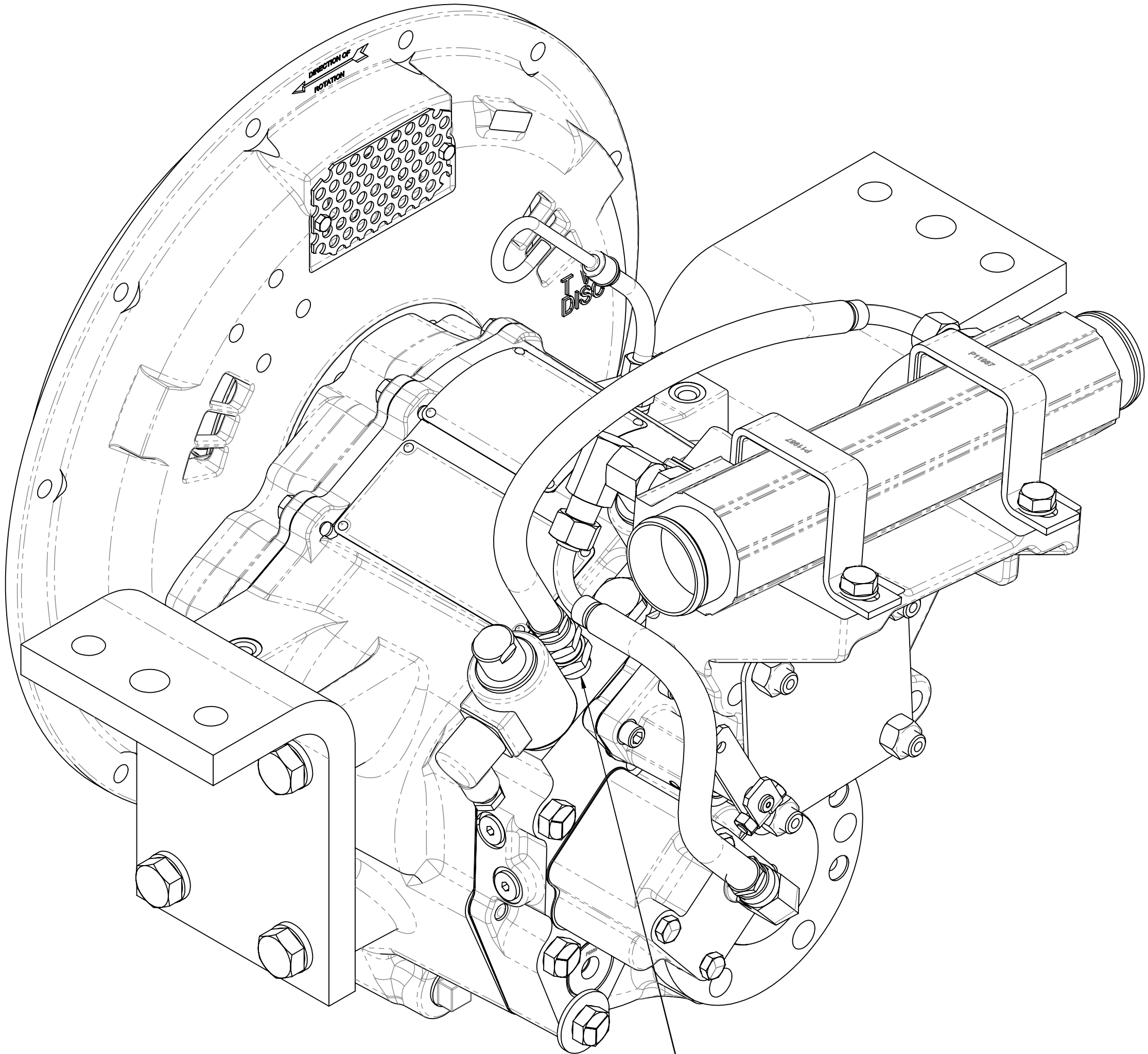
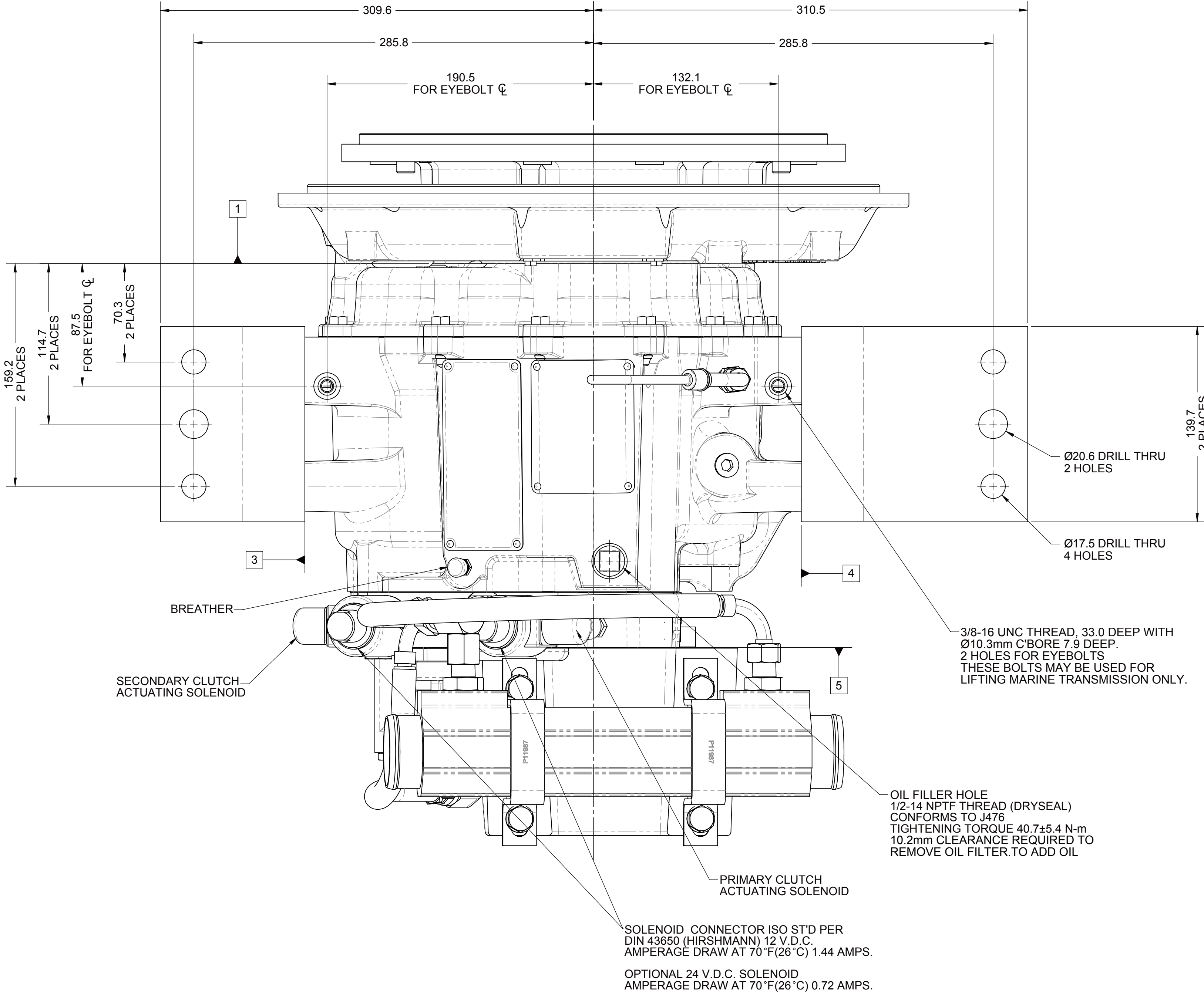
WIRING DIAGRAM :

TERMINAL 1 :+ VDC  
TERMINAL 2 :0 VDC  
TERMINAL 3 :GROUND

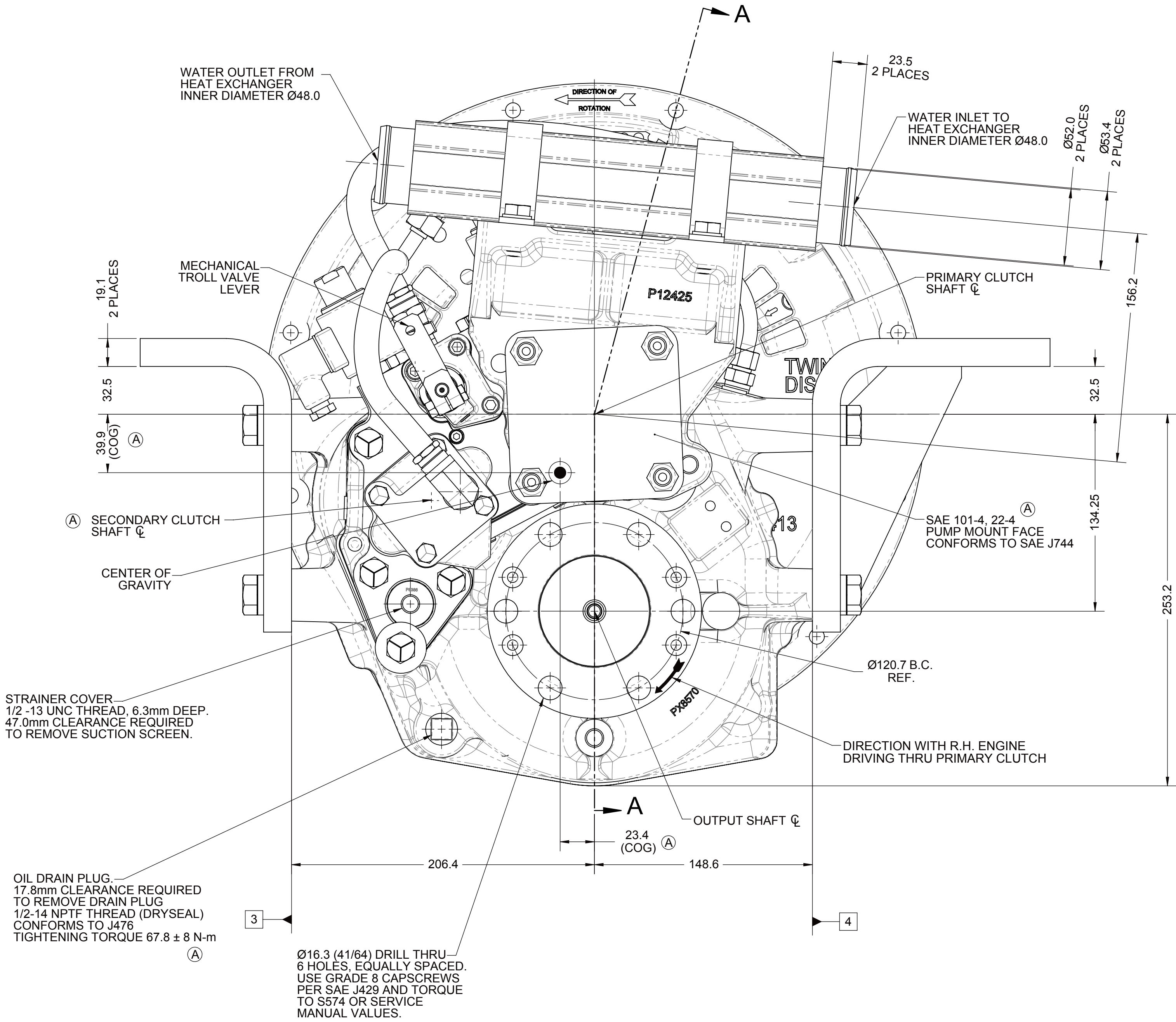
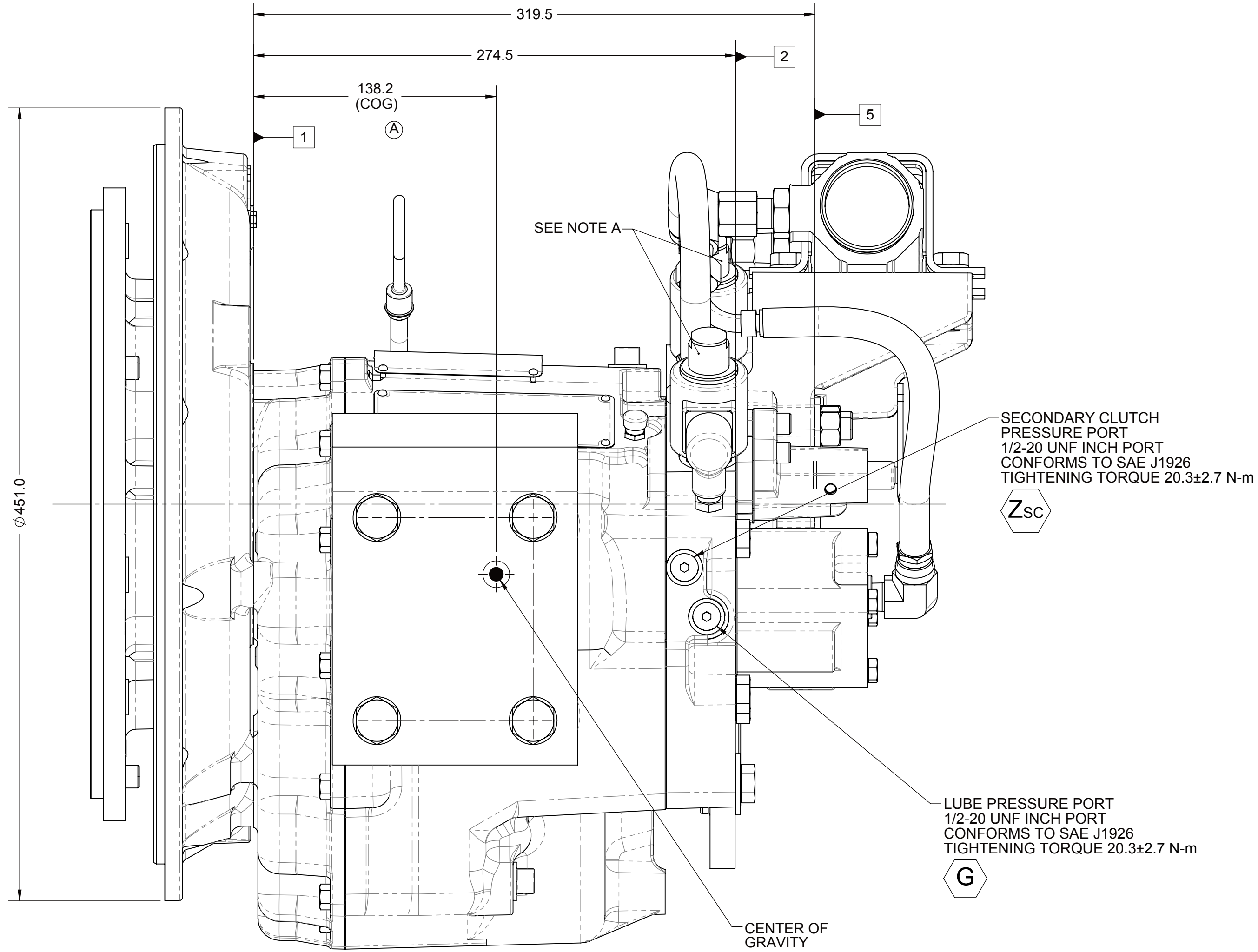


SAE #3 HOUSING MOUNTING FACE  
MUST CONFORM TO SAE J617

SECTION A-A

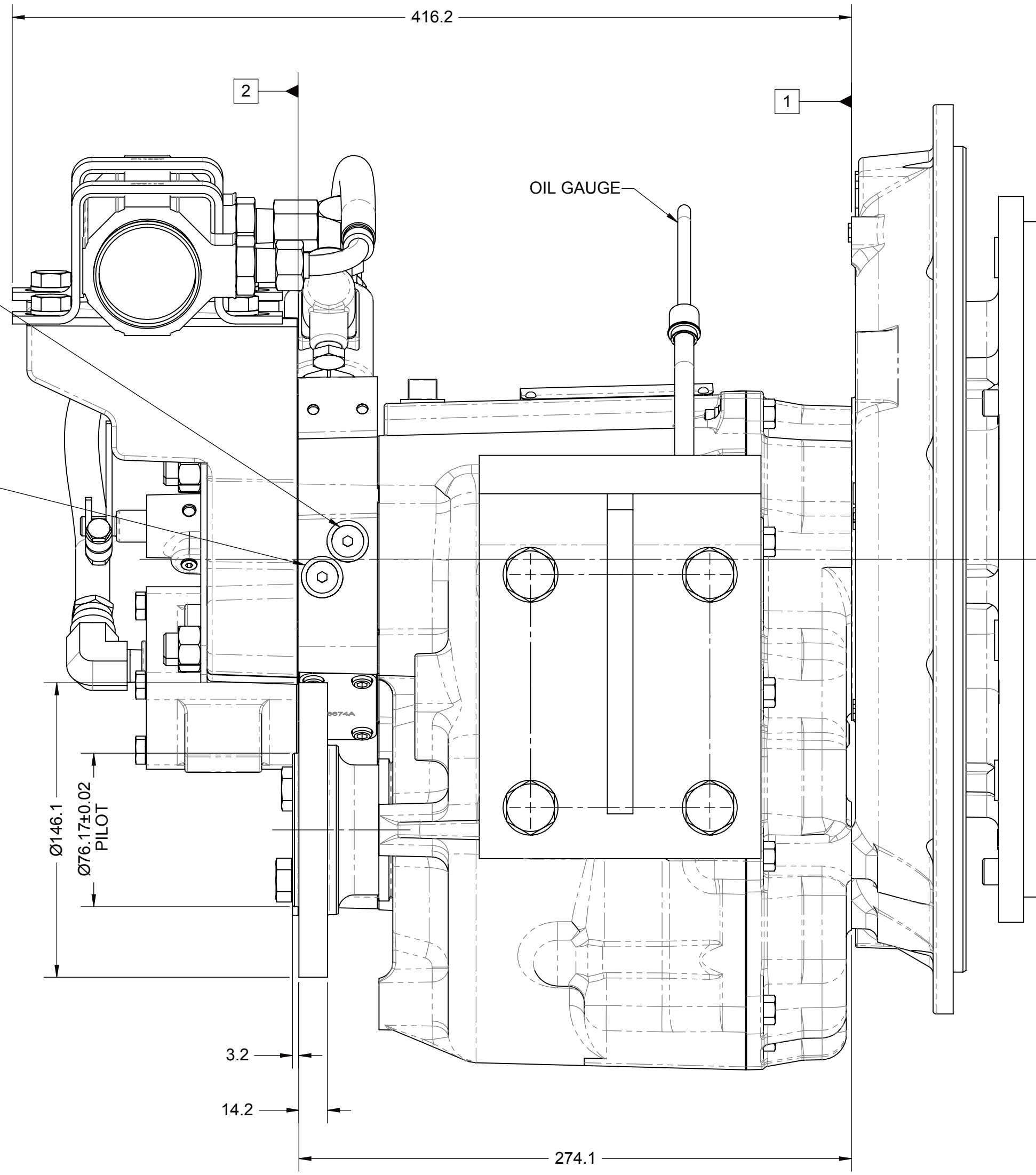


A MAIN PRESSURE PORT  
3/8-18 NPTF THREAD (DRYSEAL)  
CONNECT OIL PRESSURE GAUGE LINE HERE (USE TEE ADAPTOR)  
TIGHTENING TORQUE 37±4 Nm



PRIMARY CLUTCH  
PRESSURE PORT  
1/2-20UNF THREAD  
CONFORMS TO SAE J1926  
TIGHTENING TORQUE 20.3±2.7 N·m

PRIMARY CLUTCH  
LUBE PRESSURE PORT  
1/2-20 UNF THREAD  
CONFORMS TO SAE J1926  
TIGHTENING TORQUE 20.3±2.7 N·m



APPLICATION NOTES:

- INPUT GROUP FOR USE TO MATE APPLICABLE MODELS LIST WITH MERCURY 4.2L ENGINE.

EQUIPMENT SHOWN:  
- MG-5050SC PER PX12700 ASSEMBLY  
- SAE #3 PER SAE J617  
- CENTA-CF-R-136-HR COUPLING PER 1029208  
- ELECTRIC CONTROL VALVE WITH MECHANICAL TROLLING VALVE  
- SAE J744 101-4, 22-4 LIVE PTO  
- MOUNTED PM1190 HEAT EXCHANGER  
- 1016428L MOUNTING BRACKETS

FIRST USE ASSEMBLY: SIMILAR TO:	WEIGHT: 117.7 kg	THIRD ANGLE PROJECTION	MATERIAL: X 12	DATE: 09/22/2014	SCALE: 1:2	DRAWN BY: MG	CHECKED BY: NFG	APPROVED BY: NFG	DATE: 09/22/2014	REVISION: 1	SHEET: 1 OF 1	REV: A
METRIC										TWIN DISC, INCORPORATED		
NOTES: THIS PRINT CONTAINS PROPRIETARY INFORMATION AND IS NOT TO BE USED IN ANY MANNER WITHOUT THE WRITTEN PERMISSION OF TWIN DISC, INC. OR ITS SUBSIDIARIES. ALL DIMENSIONS ARE IN MILLIMETERS UNLESS OTHERWISE SPECIFIED. GEOMETRIC TOLERANCES PER ASME Y14.5M-1994.										DESCRIPTION: INSTALLATION MG-5050SC		

A	ECNWF-75183	11/14/2016
REV	CHANGE NO	DATE
TWIN DISC		
RACINE, WI 53403 - USA		
PX13021D		

J

I

H

G

F

E

D

C

B

A