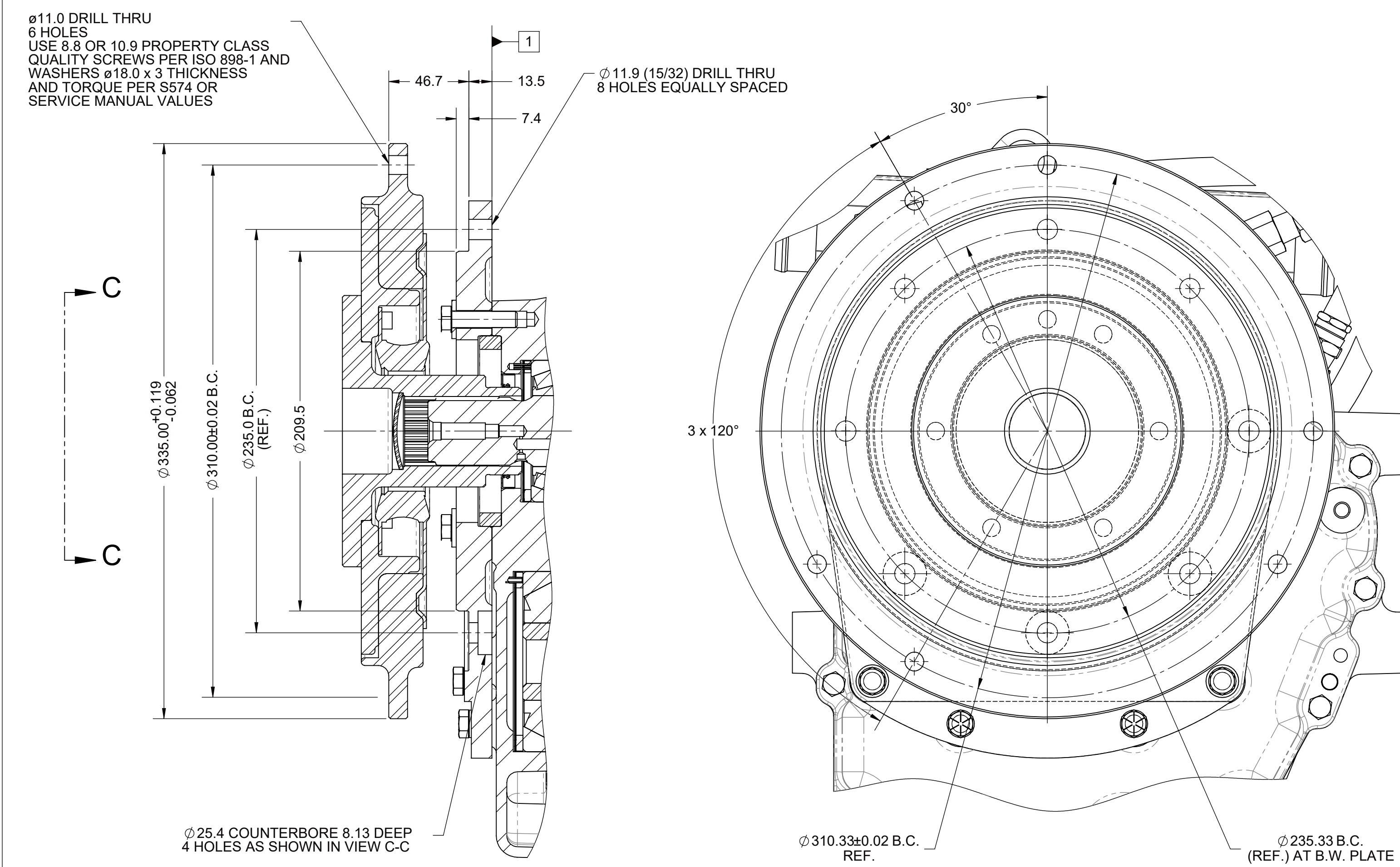
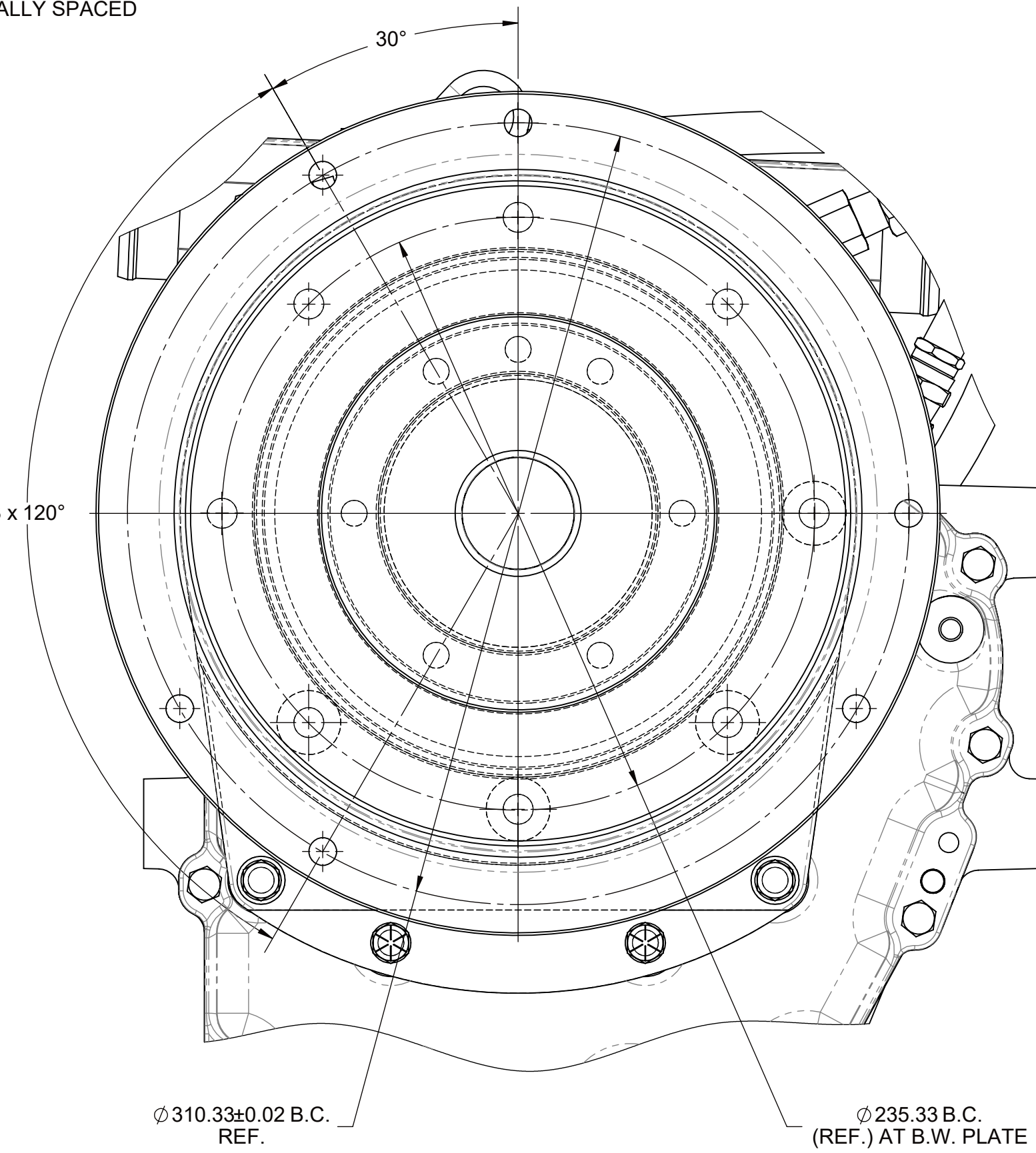


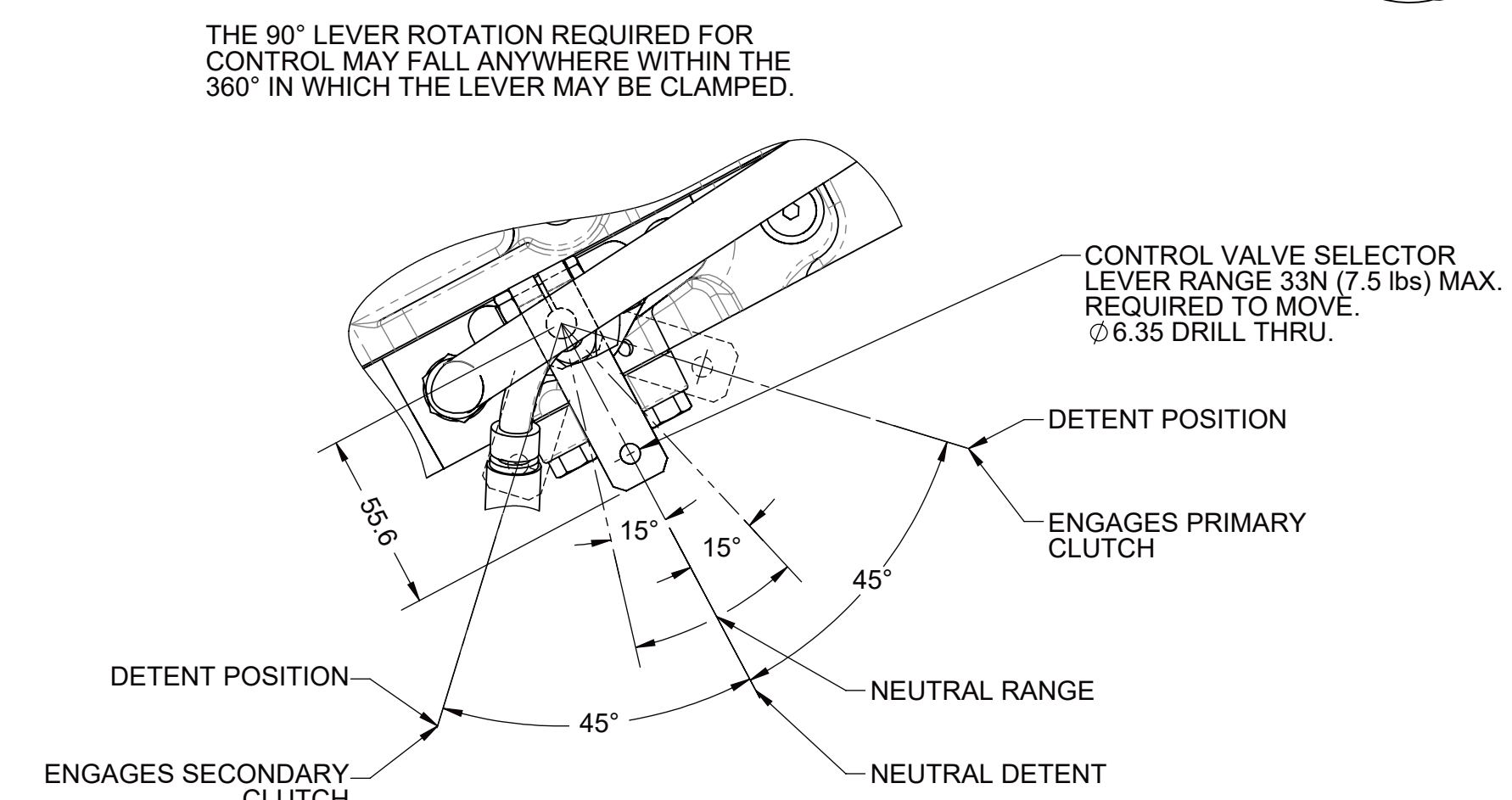
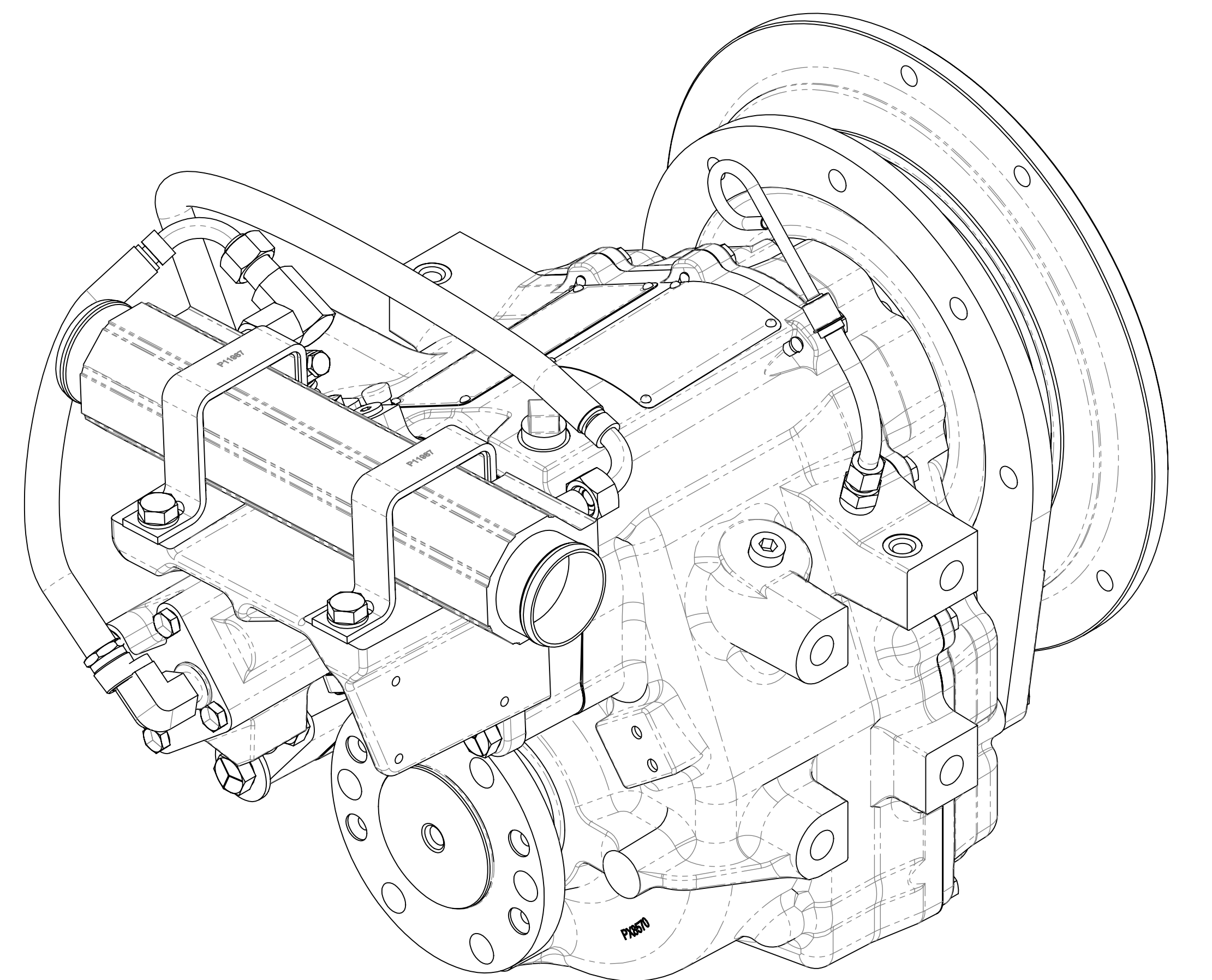
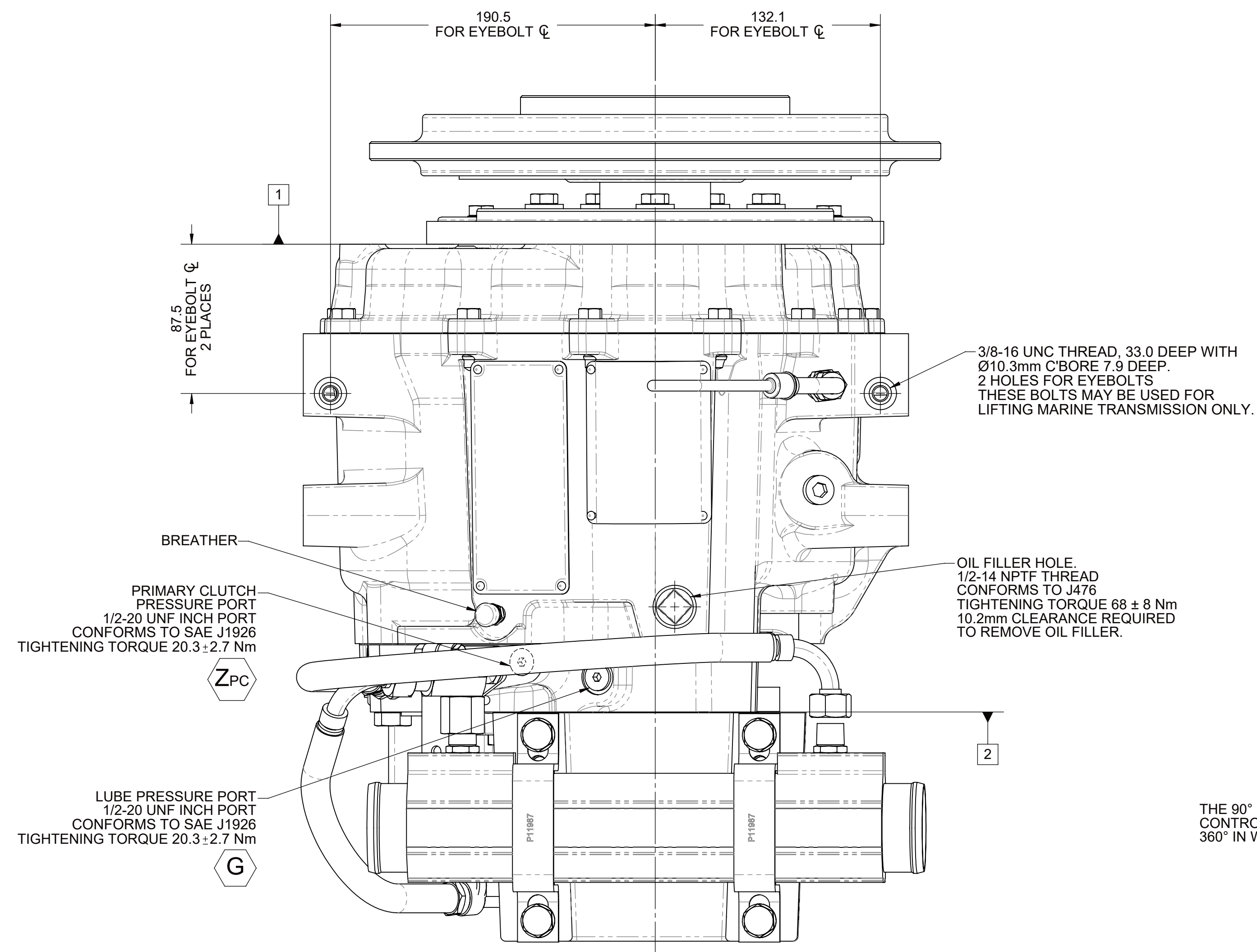
- 1 INPUT GROUP REFERENCE PLANE
- 2 PTO ADAPTER MOUNTING FACE
- 3 LEFT MOUNTING BRACKET FACE
- 4 RIGHT MOUNTING BRACKET FACE



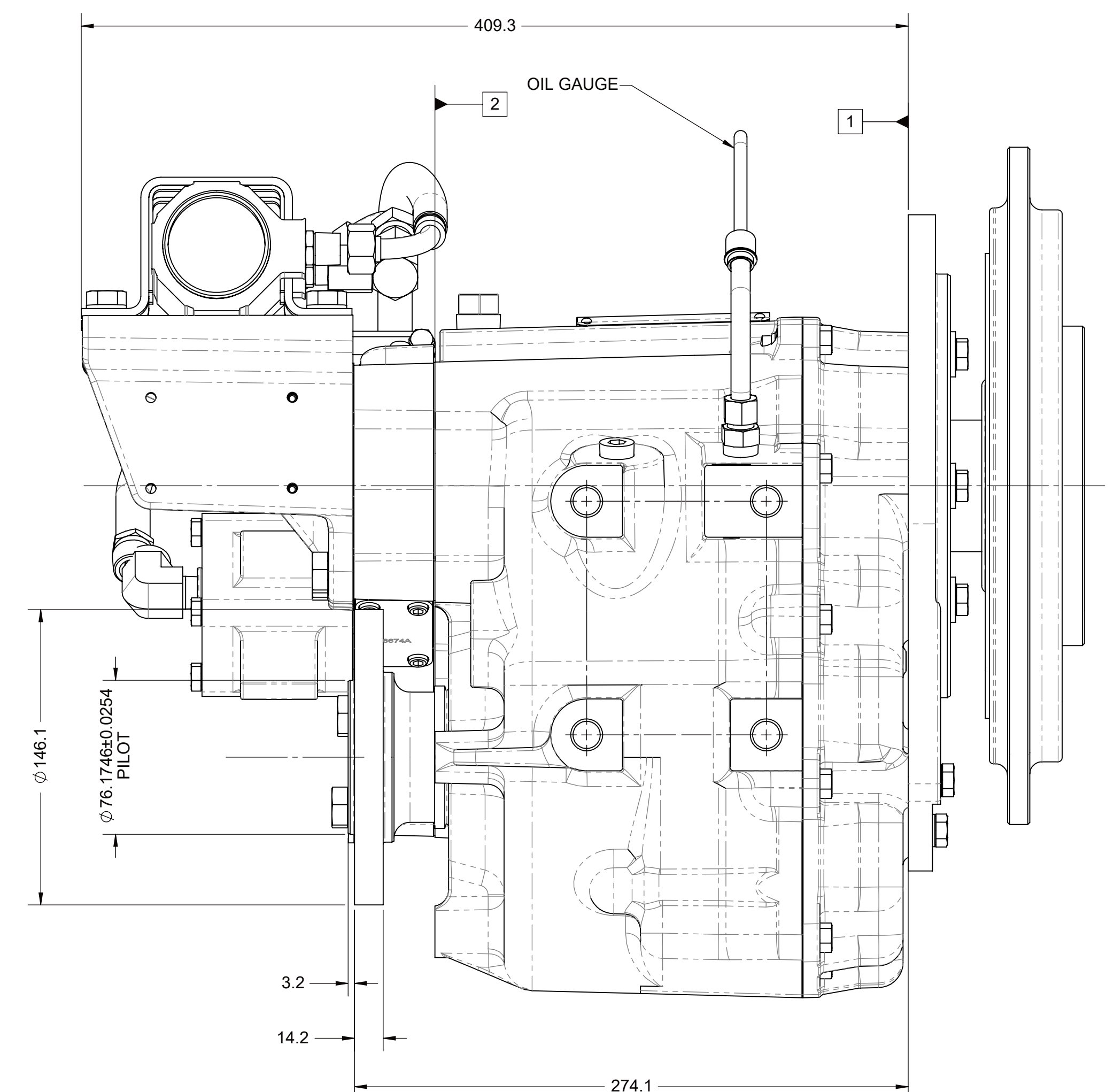
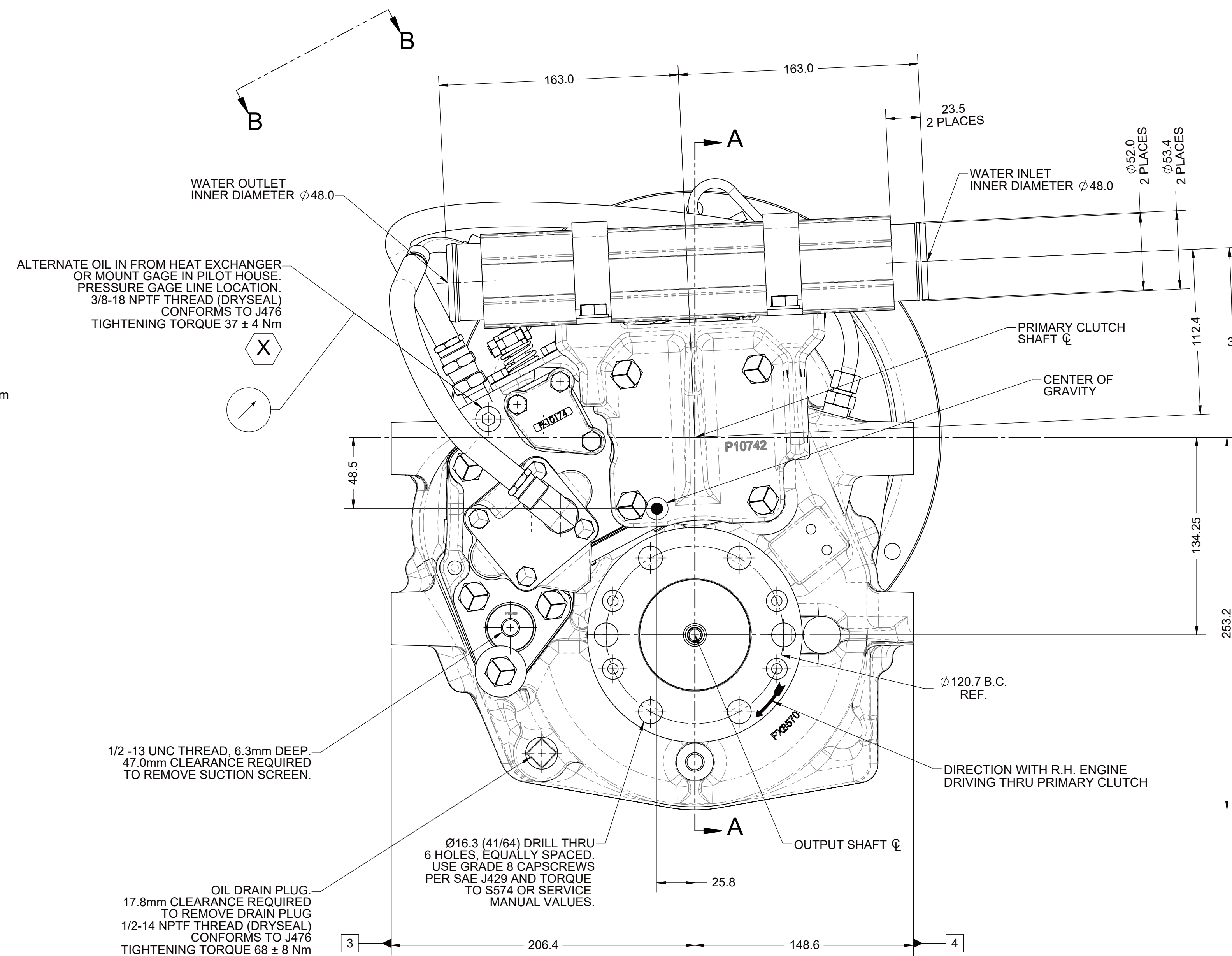
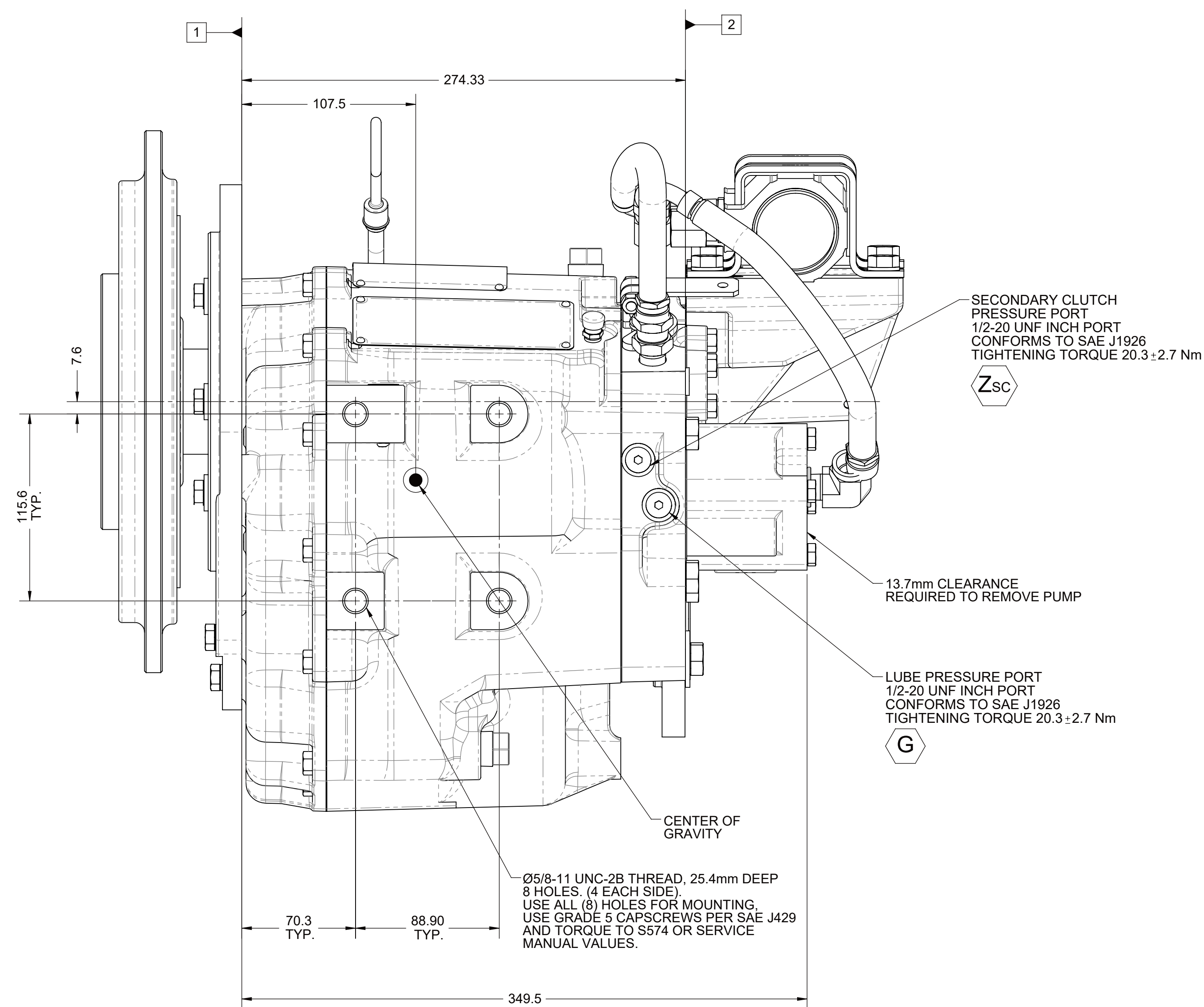
SECTION A-A



VIEW C-C




VIEW B-B



EQUIPMENT SHOWN:

- MG-5050SC PER PX12700 ASSEMBLY
- VULKAN TORFLEX 1000 COUPLING WITH BORG WARNER ADAPTOR
- MECHANICAL CONTROL VALVE
- MOUNTED PM11990 HEAT EXCHANGER

NOTE:

- ALL POINTS AVAILABLE FOR TESTING ARE CODED 
- ALL BOLTS AND FITTINGS TIGHTENED PER S574 OR SERVICE MANUAL VALUES UNLESS OTHERWISE SPECIFIED.
- REFERENCE S930 FOR TWIN DISC REQUIREMENTS FOR PRESSURE AND TEMPERATURE ALARM LEVELS.

- MOUNTED PM11900 HEAT EXCHANGER		A ECNMF-100082 07/25/2023 REV CHANGE NO DATE	
FIRST USE ASSEMBLY: FIRST USE MODEL: SIMILAR TO:	HEIGHT: 100.39 UNLESS OTHERWISE SPECIFIED ALL DIMENSIONS ARE TO FACE	MATERIAL: THIRD ANGLE PROJECTION HEAT TREAT	DATE: 4/27/2016 DRAWN BY: J.M. CHECKED BY: J.M. APPROVED BY: J.M. DWG DATE:
METRIC NOTED: THE TWIN DISC COMPANY HAS AGREED TO THE TERMS OF THE TWIN DISC INCORPORATED PATENT RIGHTS AGREEMENT. THE TWIN DISC, INCORPORATED PATENT RIGHTS AGREEMENT IS ATTACHED TO THIS DRAWING. ALL DIMENSIONS ARE TO FACE UNLESS OTHERWISE SPECIFIED BY CONTRACT.		DESCRIPTION: INSTALLATION MC-5050SC	RACINE, WI 53403 - USA PX13021E A0 SHEET 1 REV A