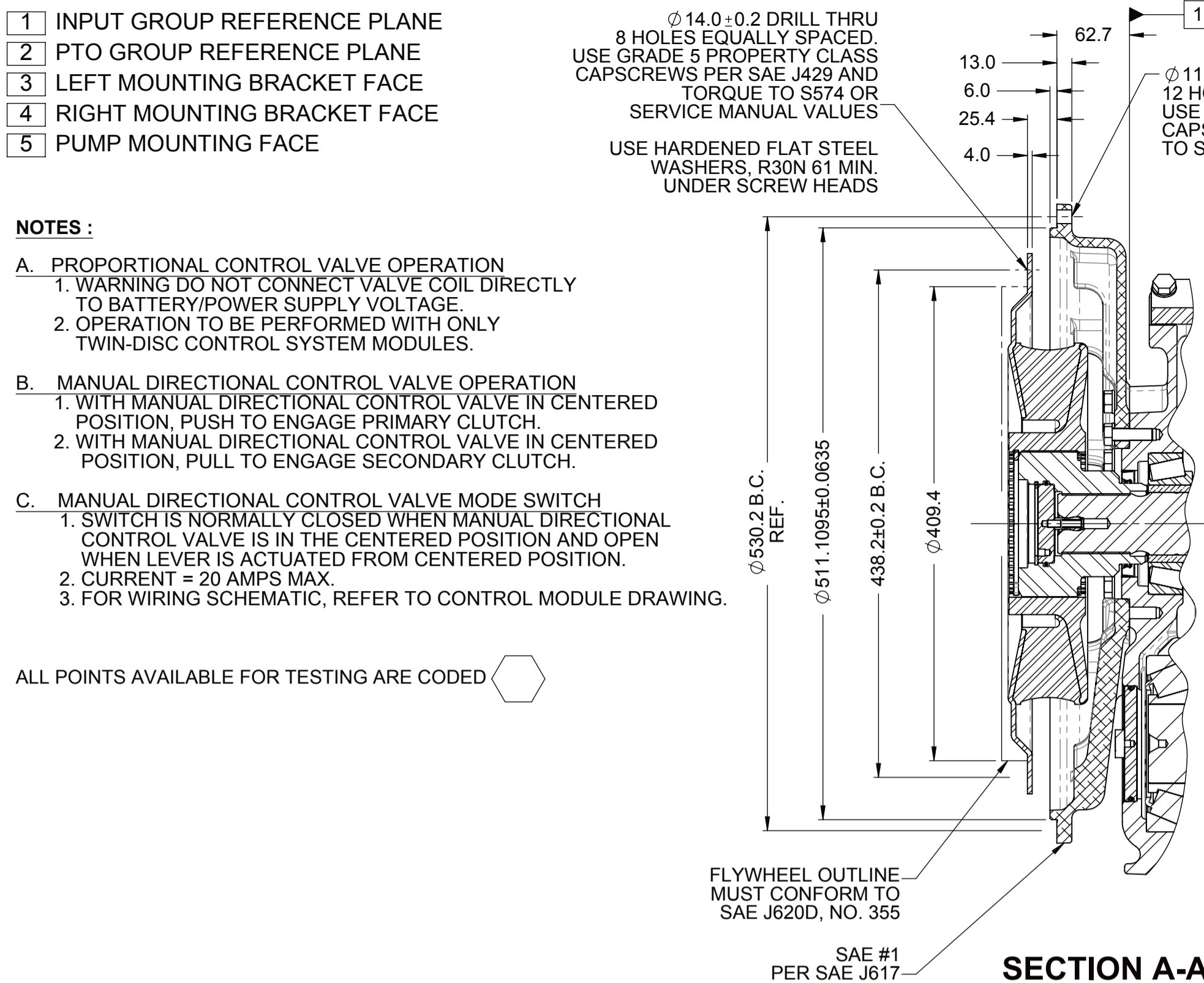


- | | |
|---|-----------------------------|
| 1 | INPUT GROUP REFERENCE PLANE |
| 2 | PTO GROUP REFERENCE PLANE |
| 3 | LEFT MOUNTING BRACKET FACE |
| 4 | RIGHT MOUNTING BRACKET FACE |
| 5 | PUMP MOUNTING FACE |

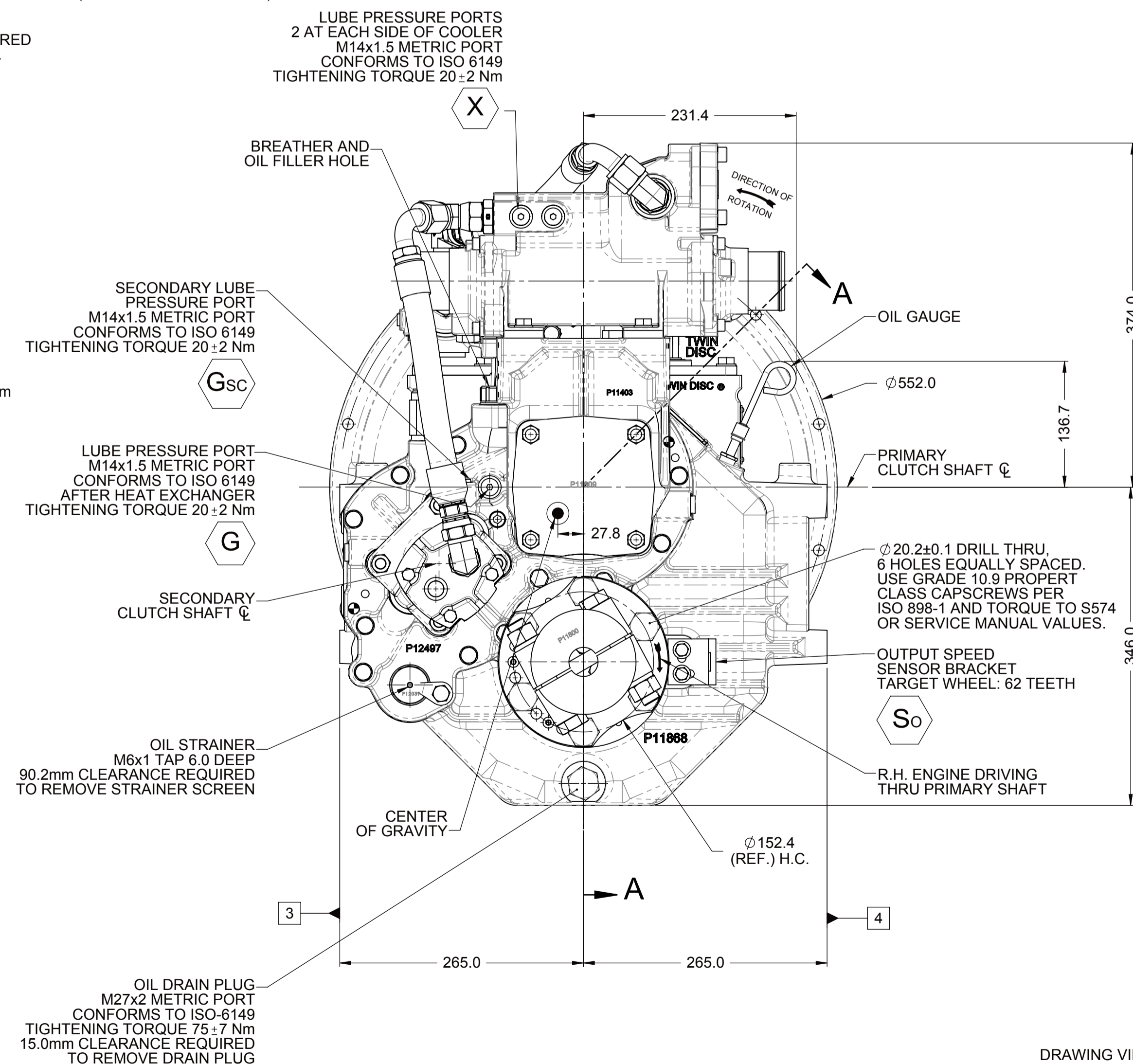
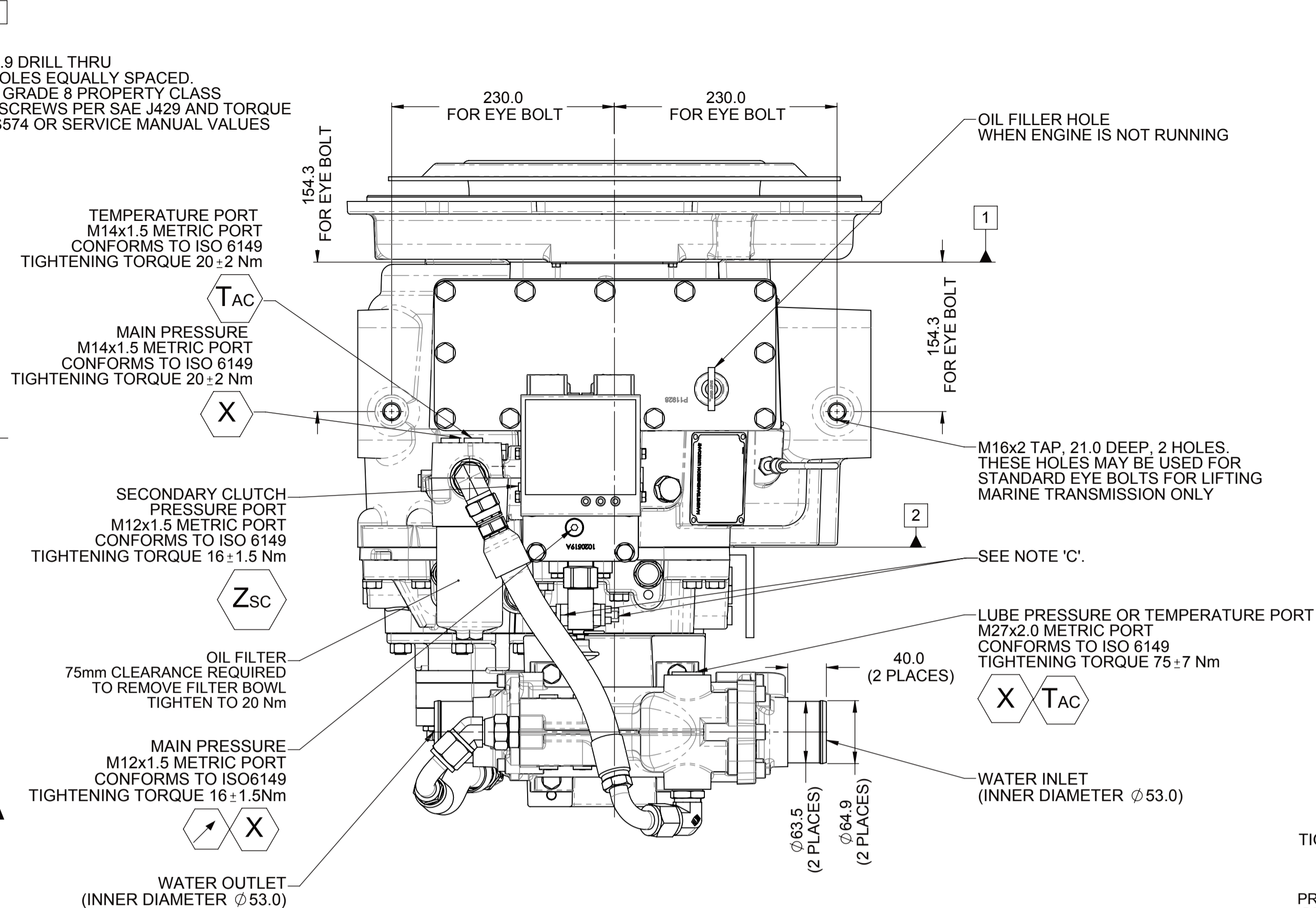
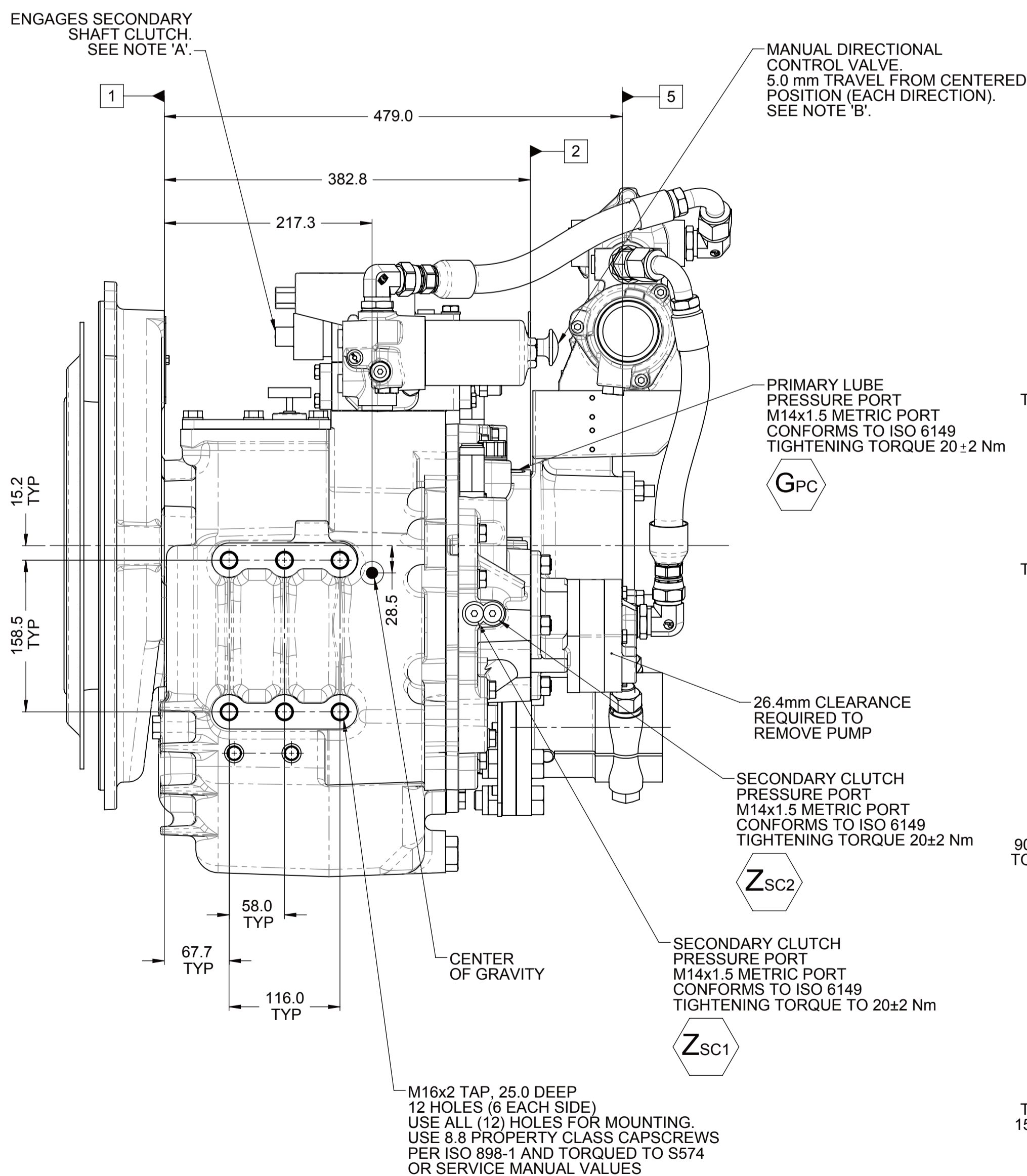
NOTES :

- A. PROPORTIONAL CONTROL VALVE OPERATION**
 1. WARNING DO NOT CONNECT VALVE COIL DIRECTLY TO BATTERY/POWER SUPPLY VOLTAGE.
 2. OPERATION TO BE PERFORMED WITH ONLY TWIN-DISC CONTROL SYSTEM MODULES.
- B. MANUAL DIRECTIONAL CONTROL VALVE OPERATION**
 1. WITH MANUAL DIRECTIONAL CONTROL VALVE IN CENTERED POSITION, PUSH TO ENGAGE PRIMARY CLUTCH.
 2. WITH MANUAL DIRECTIONAL CONTROL VALVE IN CENTERED POSITION, PULL TO ENGAGE SECONDARY CLUTCH.
- C. MANUAL DIRECTIONAL CONTROL VALVE MODE SWITCH**
 1. SWITCH IS NORMALLY CLOSED WHEN MANUAL DIRECTIONAL CONTROL VALVE IS IN THE CENTERED POSITION AND OPEN WHEN LEVER IS ACTUATED FROM CENTERED POSITION.
 2. CURRENT = 20 AMPS MAX.
 3. FOR WIRING SCHEMATIC, REFER TO CONTROL MODULE DRAWING.

ALL POINTS AVAILABLE FOR TESTING ARE CODED 





SECTION A-A



EQUIPMENT SHOWN:

- MGX-5095SC PER PX12480A ASSEMBLY
- SAE #1/SAE 355 VULKAN VKE-4010 SERIES
- GP VALVE WITH EC050 CONTROL MODULE
- LIVE SAE 127-4 PTO ADAPTER W/ HEAT EXCHANGER BRACKET
- MOUNTED PM13008 HEAT EXCHANGER
- PX11800 COMPANION FLANGE

DRAWING VIEWS UPDATED ^(A)

FIRST USE ASSEMBLY: FIRST USE MODEL: SIMILAR TO:		WEIGHT: 260.04 kg WRT: kg m ²  THIRD ANGLE PROJECTION		MATERIAL: HEAT TREAT:		DATE: 05/30/2011 SCALE: 1:4 DRAWN BY: YU CHECKED BY: DV		 RACINE, WI 53403 - USA	
METRIC		UNLESS OTHERWISE SPECIFIED MACHINED DIMENSIONS X .075 X .025 X .013		DESCRIPTION:		INSTALLATION MGX-5095SC		PX13023A	
NOTICE! THIS PRINT CONTAINS PROPRIETARY INFORMATION AND IS NOT TO BE USED IN ANY MANNER THAT IS FURTHER TO THE INTEREST OF TWIN DISC, INCORPORATED.		ALL ANGULAR TOLERANCES ±1° GEOMETRIC TOLERANCING PER ASME Y14.5M 1994		APPROVED BY: DV		DWG/REV: A1		SHEET: 1 OF 1 REV:	

