

- 1 INPUT GROUP REFERENCE PLANE  
2 PTO GROUP REFERENCE PLANE  
3 LEFT MOUNTING BRACKET FACE  
4 RIGHT MOUNTING BRACKET FACE  
5 PUMP MOUNTING FACE

A. PROPORTIONAL CONTROL VALVE OPERATION

1. WARNING DO NOT CONNECT VALVE COIL DIRECTLY TO BATTERY/POWER SUPPLY VOLTAGE.  
2. OPERATION TO BE PERFORMED WITH ONLY TWIN-DISC CONTROL SYSTEM MODULES.

B. MANUAL DIRECTIONAL CONTROL VALVE OPERATION

1. WITH MANUAL DIRECTIONAL CONTROL VALVE IN CENTERED POSITION, PUSH TO ENGAGE SECONDARY CLUTCH.  
2. WITH MANUAL DIRECTIONAL CONTROL VALVE IN CENTERED POSITION, PULL TO ENGAGE PRIMARY CLUTCH.

C. MANUAL DIRECTIONAL CONTROL VALVE MODE SWITCH

1. SWITCH IS NORMALLY CLOSED WHEN MANUAL DIRECTIONAL CONTROL VALVE IS IN THE CENTERED POSITION AND OPEN WHEN LEVER IS ACTUATED FROM CENTERED POSITION.  
2. CURRENT = 20 AMPS MAX.  
3. FOR WIRING SCHEMATIC, REFER TO CONTROL MODULE DRAWING.

D. REFERENCE S930 FOR TWIN DISC REQUIREMENTS FOR PRESSURE AND ALARM LEVELS.

E. UNLESS OTHERWISE SPECIFIED, FASTENER TORQUE VALUES PER S574 STANDARD.

F. ALL POINTS AVAILABLE FOR TESTING ARE CODED



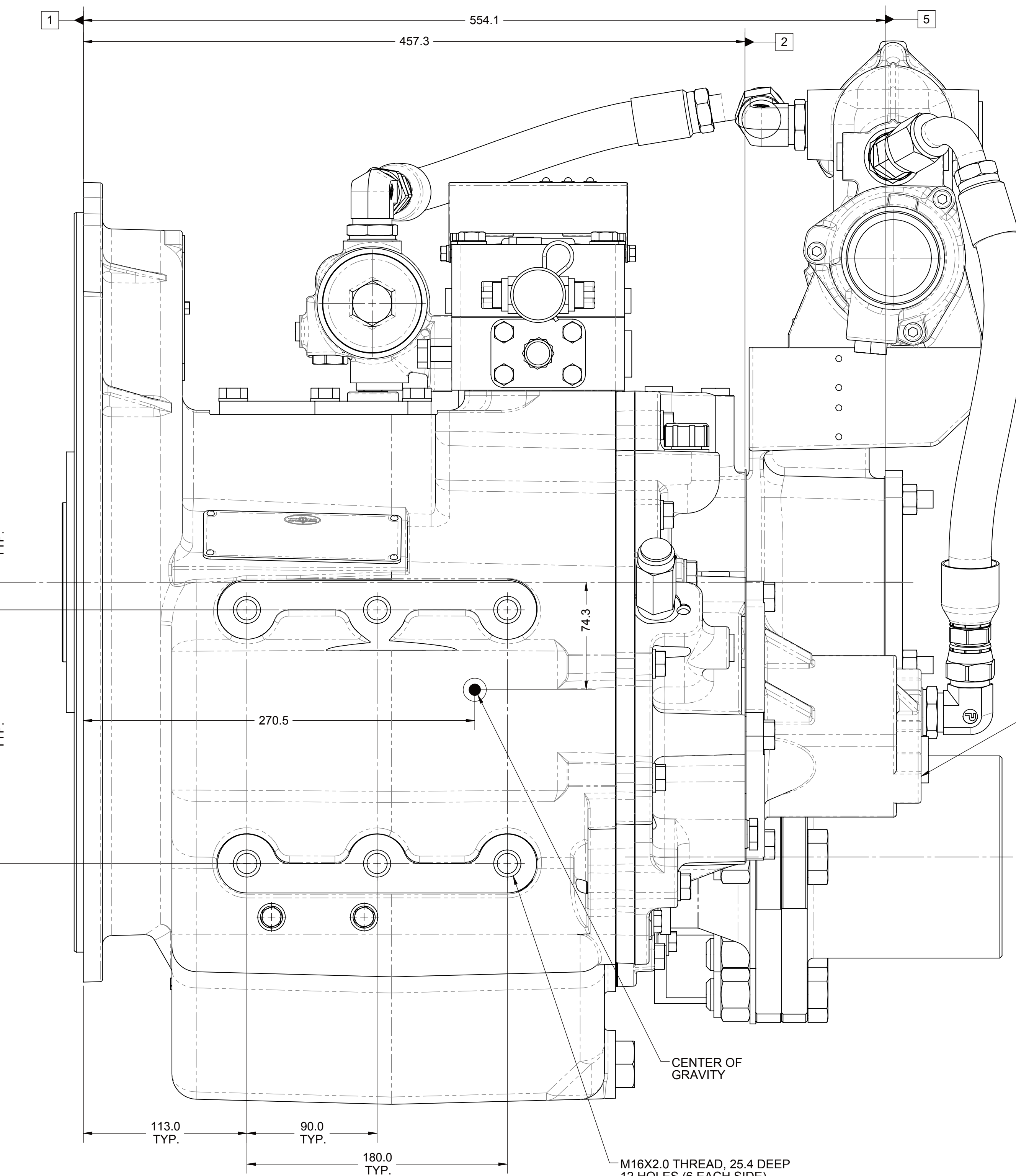
TO SUIT  
GWB 587.35

592.45  
Ø530.2 H.C. REF.  
Ø511.1115±0.0635  
12.0  
2.80±0.10  
Ø180.0  
Ø155.5±0.1  
Ø109.983±0.018

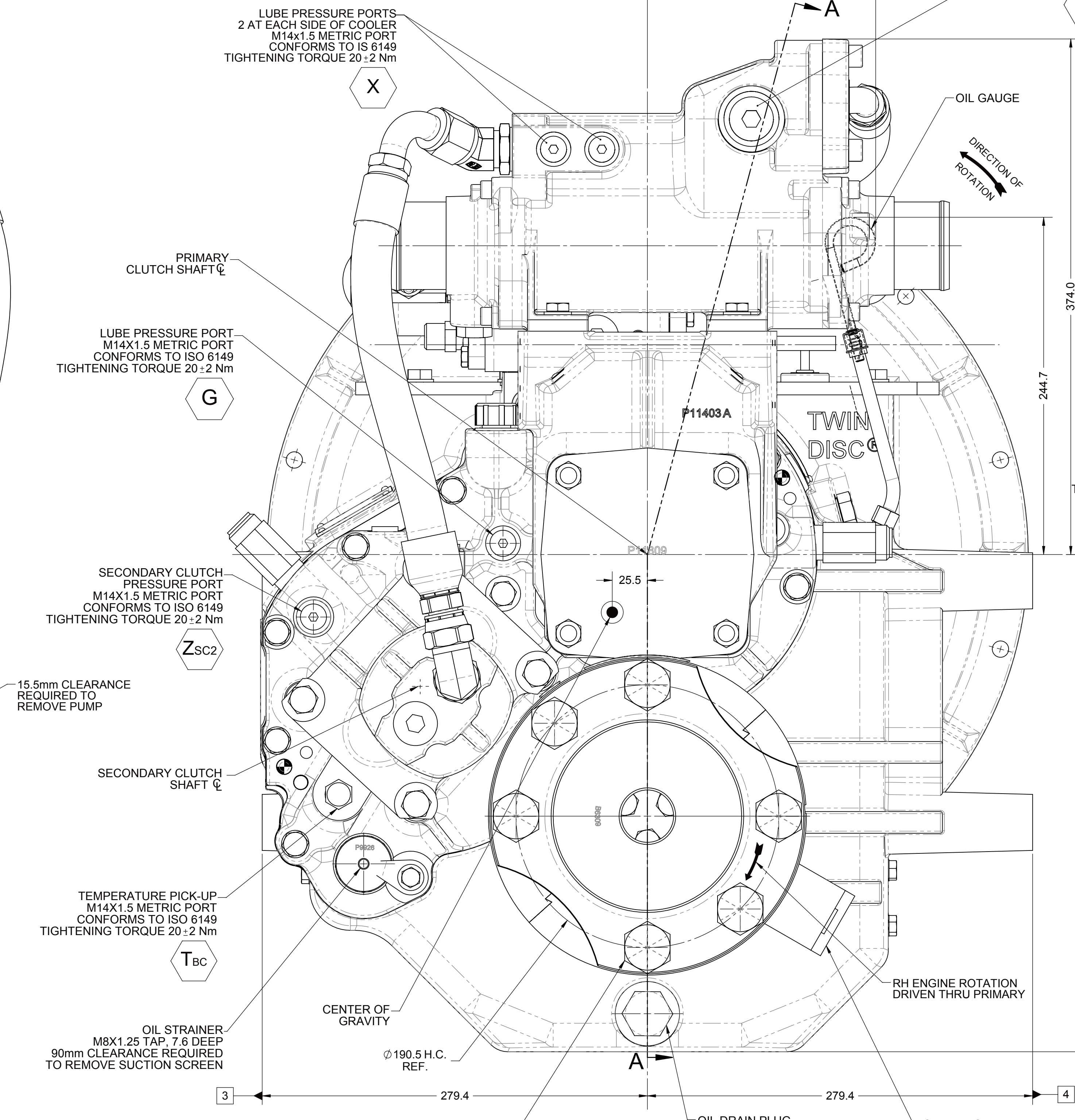
Ø14.2-0.1 DRILL THRU.  
8 HOLES EQUALLY SPACED  
GRADE 8 QUALITY CAPSCREWS  
PER S.A.E. J429 AND TORQUE TO  
S574 OR SERVICE MANUAL VALUES.

SAE #1  
MUST CONFORMS TO SAE J617

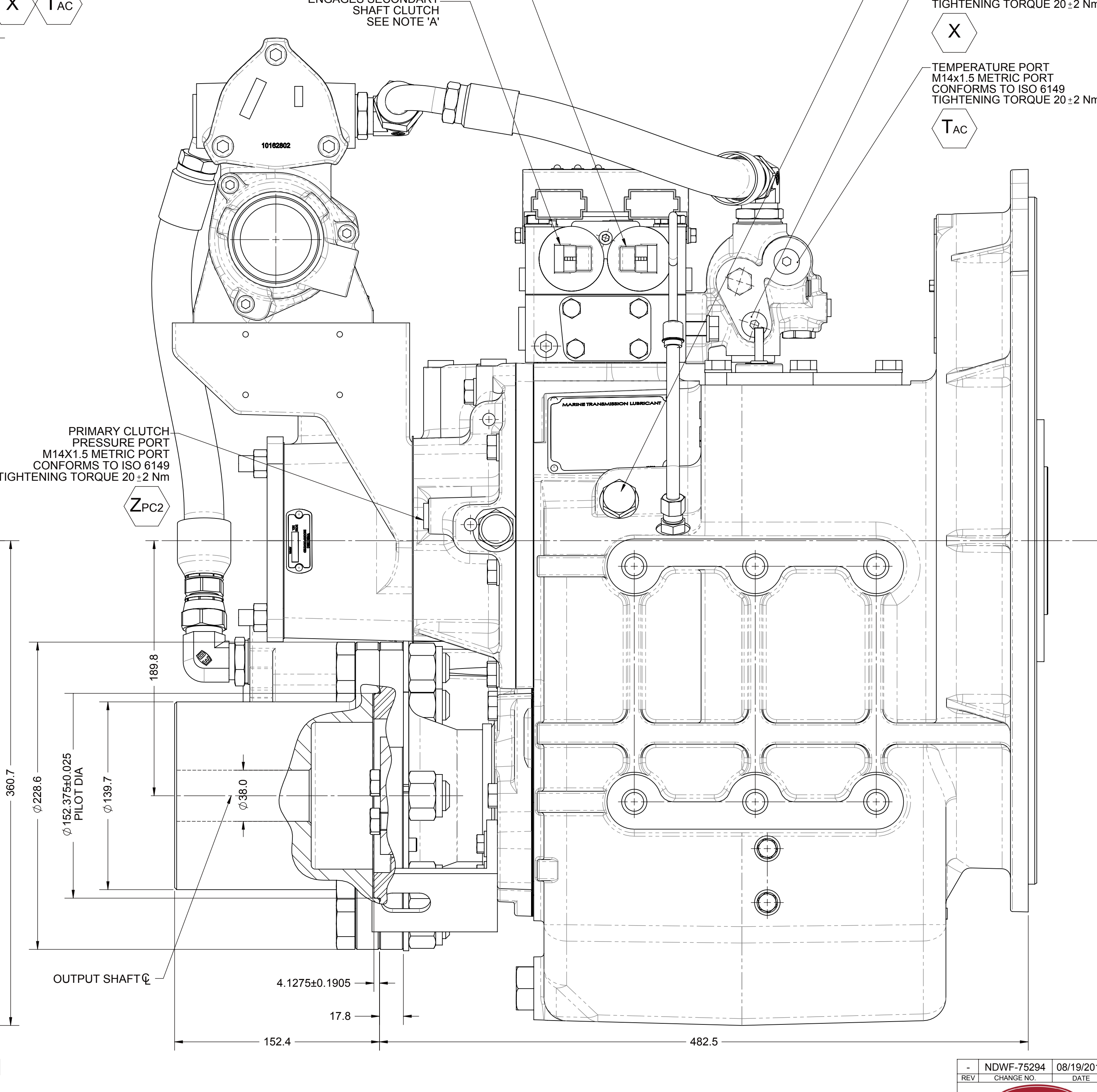
SECTION A-A



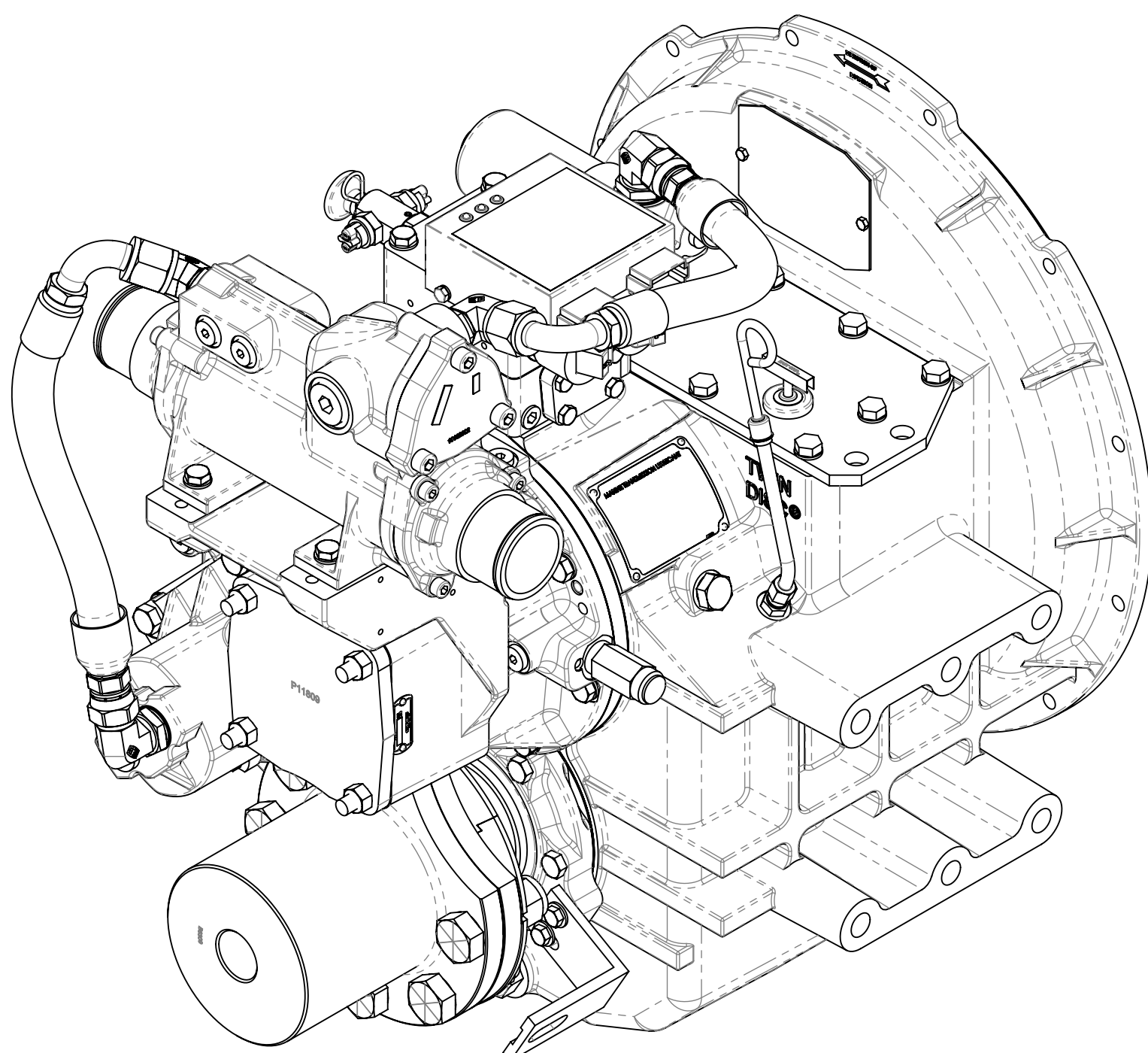
113.0 TYP.  
90.0 TYP.  
180.0 TYP.  
M16X2.0 THREAD, 25.4 DEEP  
12 HOLES (6 EACH SIDE)  
USE ALL (12) HOLES FOR MOUNTING  
USE GRADE 5 QUALITY CAPSCREWS  
PER S.A.E. J429 AND TORQUE TO  
S574 OR SERVICE MANUAL VALUES.



279.4  
279.4  
279.4  
Ø22.6 (5/8") DRILL THRU, 6 HOLES  
BASED ON 6 HOLES EQUALLY SPACED  
USE PROPERTY CLASS 10.9 OR  
EQUIVALENT PER S.A.E. J429 AND  
TIGHTEN PER S574  
OIL DRAIN PLUG  
M27X2.0 METRIC PORT  
CONFORMS TO ISO 6149  
TIGHTENING TORQUE 75:7 Nm  
20.0mm CLEARANCE REQUIRED  
TO REMOVE DRAIN PLUG  
OUTPUT SPEED  
SENSOR BRACKET  
TARGET WHEEL: 64 TEETH  
So



374.0  
244.7  
380.7  
Ø226.6  
Ø152.375±0.025  
PILOT DIA  
Ø138.7  
Ø38.0  
189.8  
4.1275±0.1905  
17.8  
152.4  
482.5  
EQUIPMENT SHOWN:  
- NGX5114SC-HD PER PX13165 ASSEMBLY  
- GWB 587.35 INPUT FLANGE  
- GP VALVE WITH EC050 PROFILE MODULE  
- SAE 127.4 PTO ADAPTER W/ HEAT EXCHANGER BRACKET  
- PM13008 MOUNTED HEAT EXCHANGER GROUP  
- PX9642 COMPANION FLANGE  
FIRST USE ASSEMBLY:  
FIRST USE MODEL:  
SIMILAR TO:  
WEIGHT: 330.72 kg  
THIRD ANGLE  
PROJECTION  
SCALE: 1:2  
DRAWN BY: PM  
CHECKED BY: DV  
APPROVED BY: DV  
DATE: 08/18/2015  
RACINE, WI 53403 - USA  
TWIN DISC  
PX13252A  
SHEET 1 OF 1  
REV: 1  
INSTALLATION  
MGX-5114SC-HD



8

7

6

5

4

3

2

1

J

I

H

G

F

E

D

C

B

A