
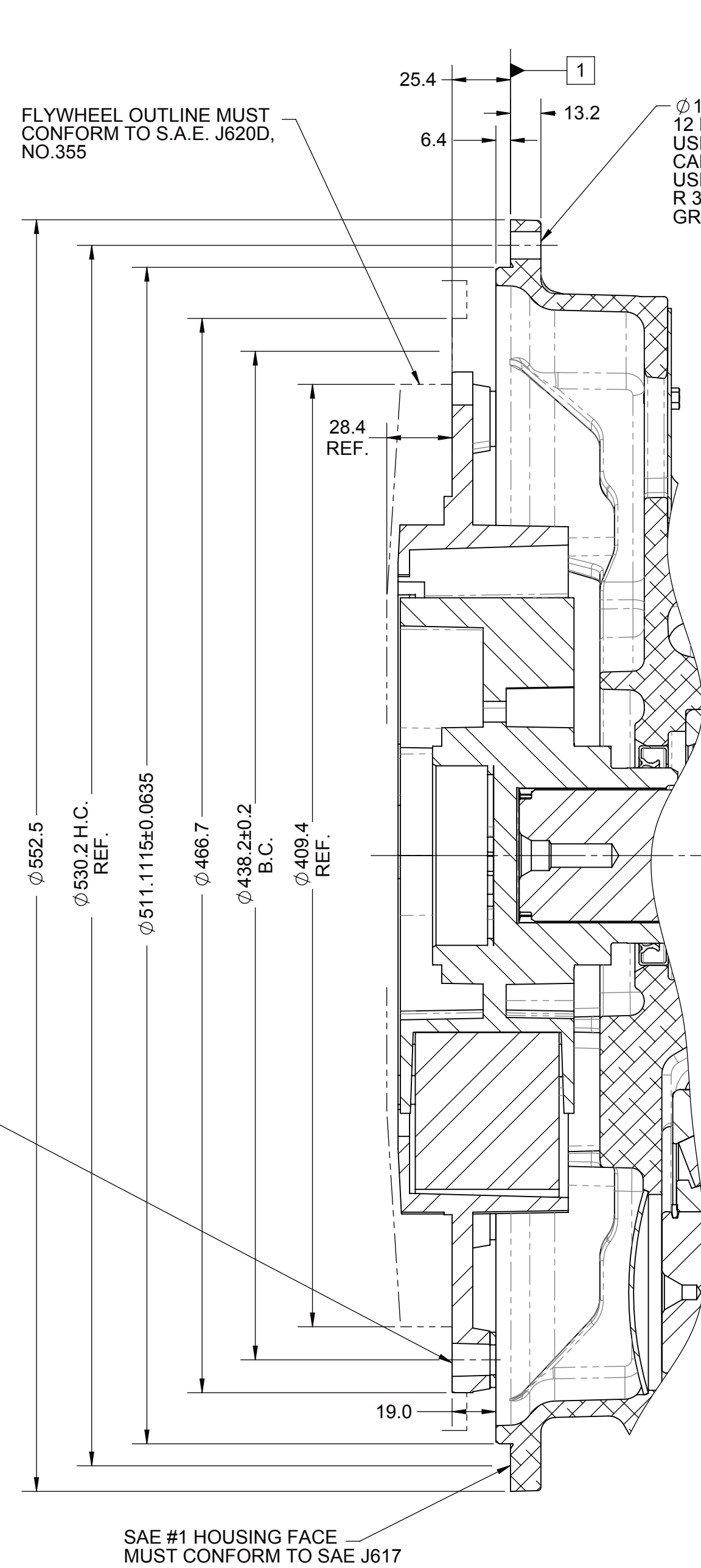


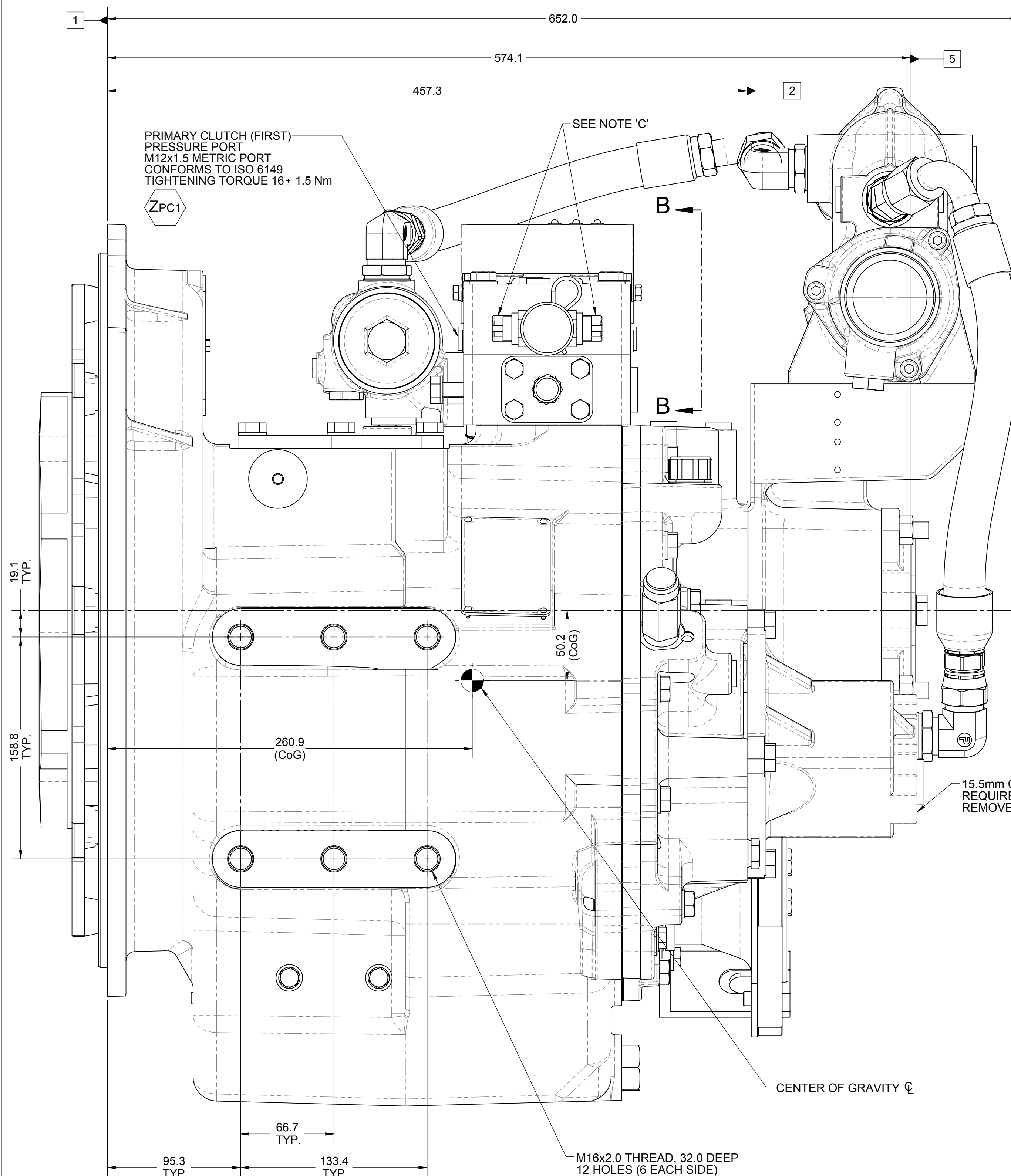
- 1 ENGINE FLYWHEEL HOUSING MOUNTING FACE
- 2 PTO GROUP MOUNTING FACE
- 3 LEFT BRACKET MOUNTING FACE
- 4 RIGHT BRACKET MOUNTING FACE
- 5 PUMP MOUNTING FACE

NOTES :

- A. PROPORTIONAL CONTROL VALVE OPERATION.
 - 1. WARNING DO NOT CONNECT VALVE COIL DIRECTLY TO BATTERY/POWER SUPPLY VOLTAGE. OPERATION TO BE PERFORMED WITH ONLY TWIN-DISC CONTROL SYSTEM MODULES.
- B. MANUAL DIRECTIONAL CONTROL VALVE OPERATION.
 - 1. WITH MANUAL DIRECTIONAL CONTROL VALVE IN CENTERED POSITION, PUSH TO ENGAGE SECONDARY CLUTCH.
 - 2. WITH MANUAL DIRECTIONAL CONTROL VALVE IN CENTERED POSITION, PULL TO ENGAGE PRIMARY CLUTCH.
- C. MANUAL DIRECTIONAL CONTROL VALVE MODE SWITCH.
 - 1. SWITCH IS NORMALLY CLOSED WHEN MANUAL DIRECTIONAL CONTROL VALVE IS IN THE CENTERED POSITION AND OPEN WHEN REFER IS ACTUATED FROM CENTERED POSITION.
 - 2. CURRENT = 20 AMPS MAX.
 - 3. FOR WIRING SCHEMATIC, REFER TO CONTROL MODULE DRAWING.
- D. REFERENCE S930 FOR TWIN DISC REQUIREMENTS FOR PRESSURE AND ALARM LEVELS.
- E. UNLESS OTHERWISE SPECIFIED, FASTENER TORQUE VALUES PER S574 STANDARD.
- F. ALL POINTS AVAILABLE FOR TESTING ARE CODED 

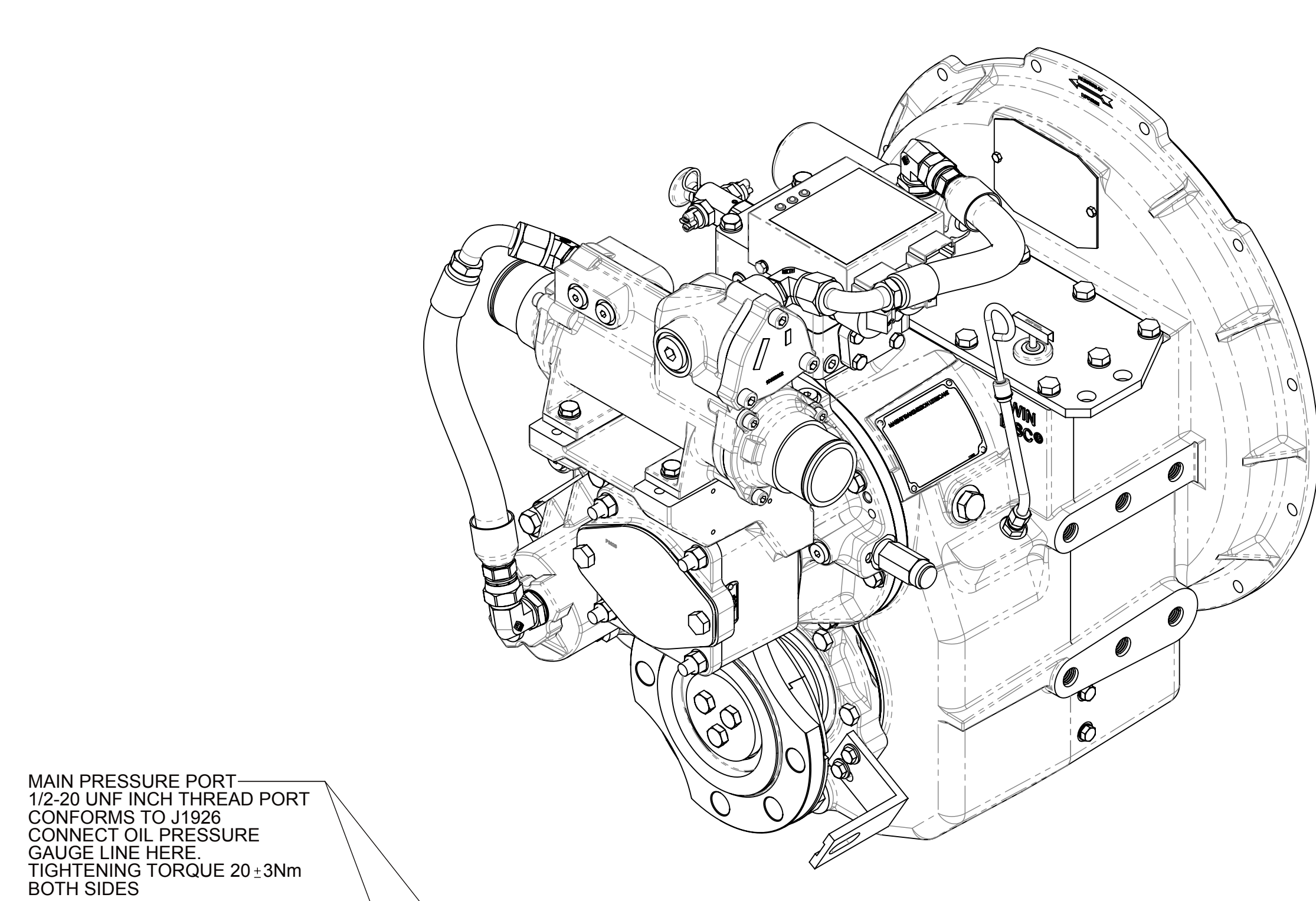
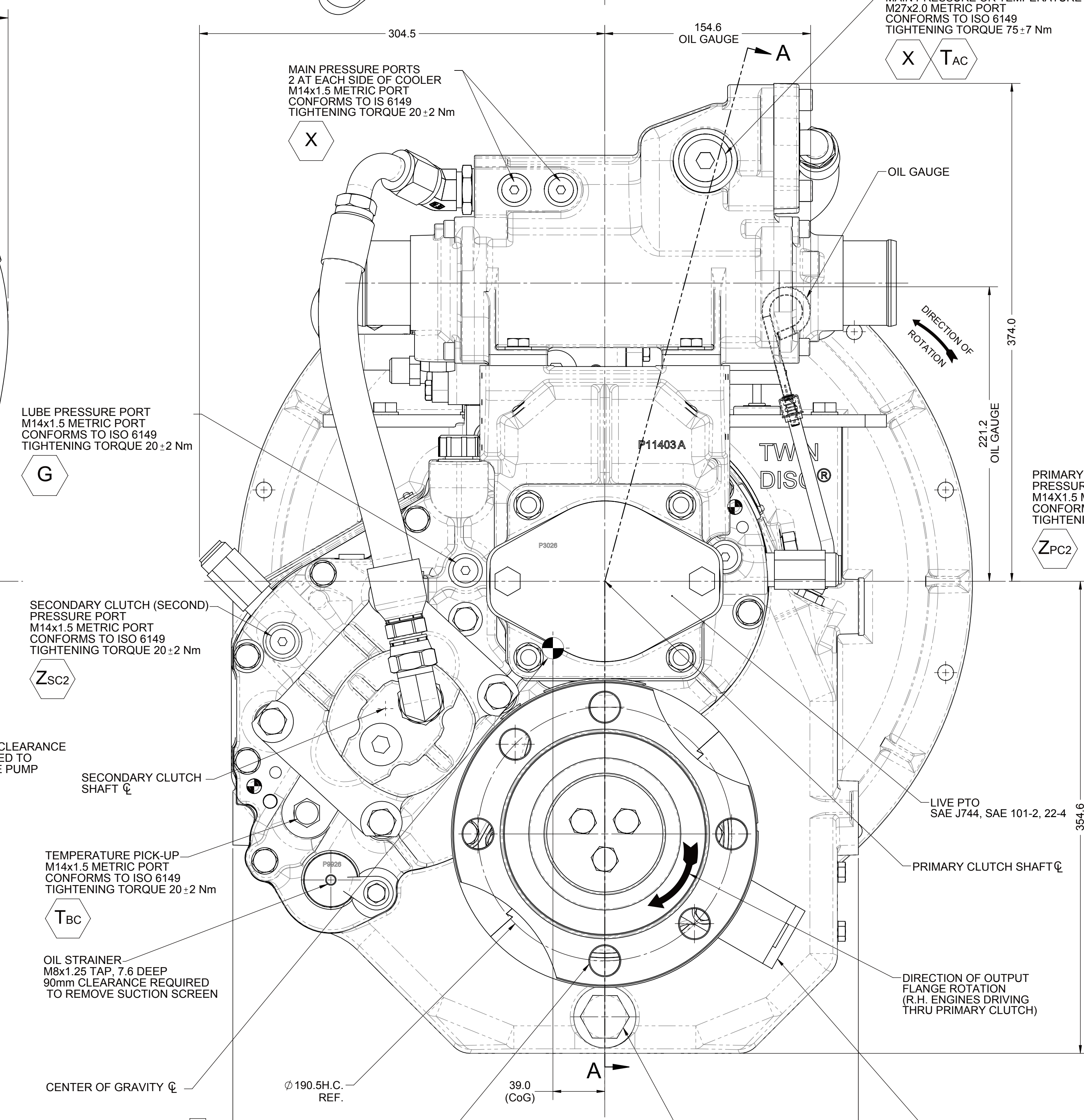
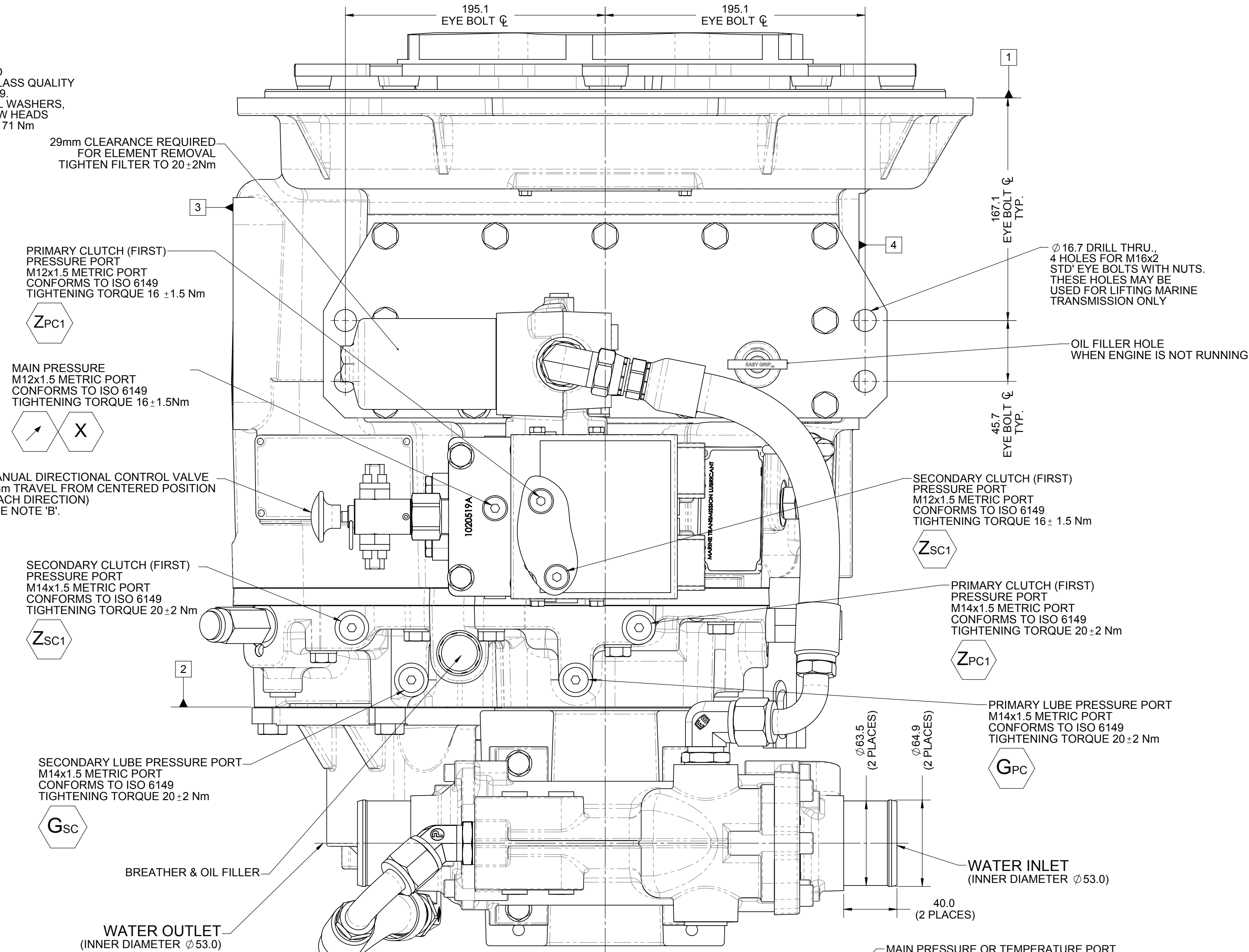


SECTION A-A

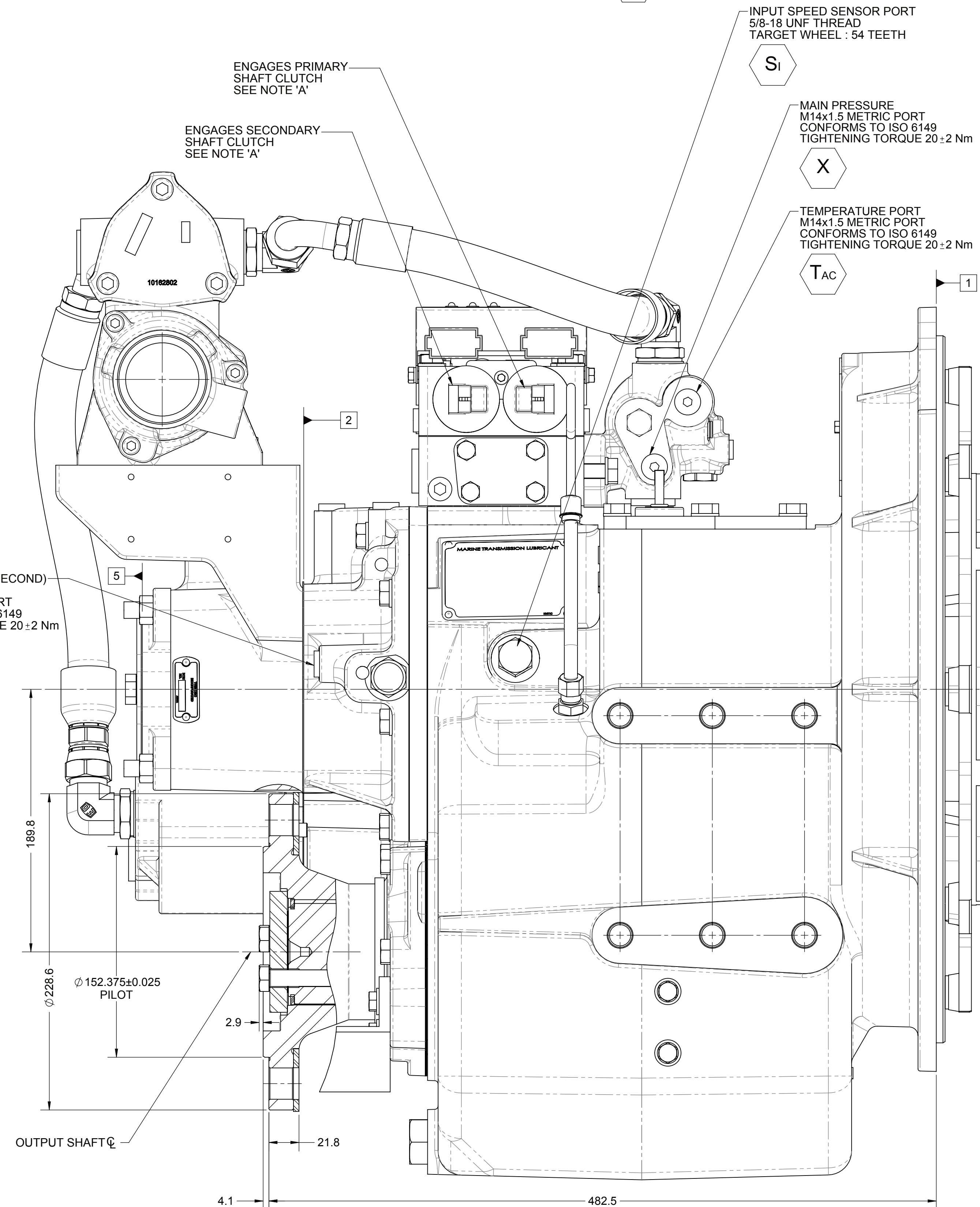
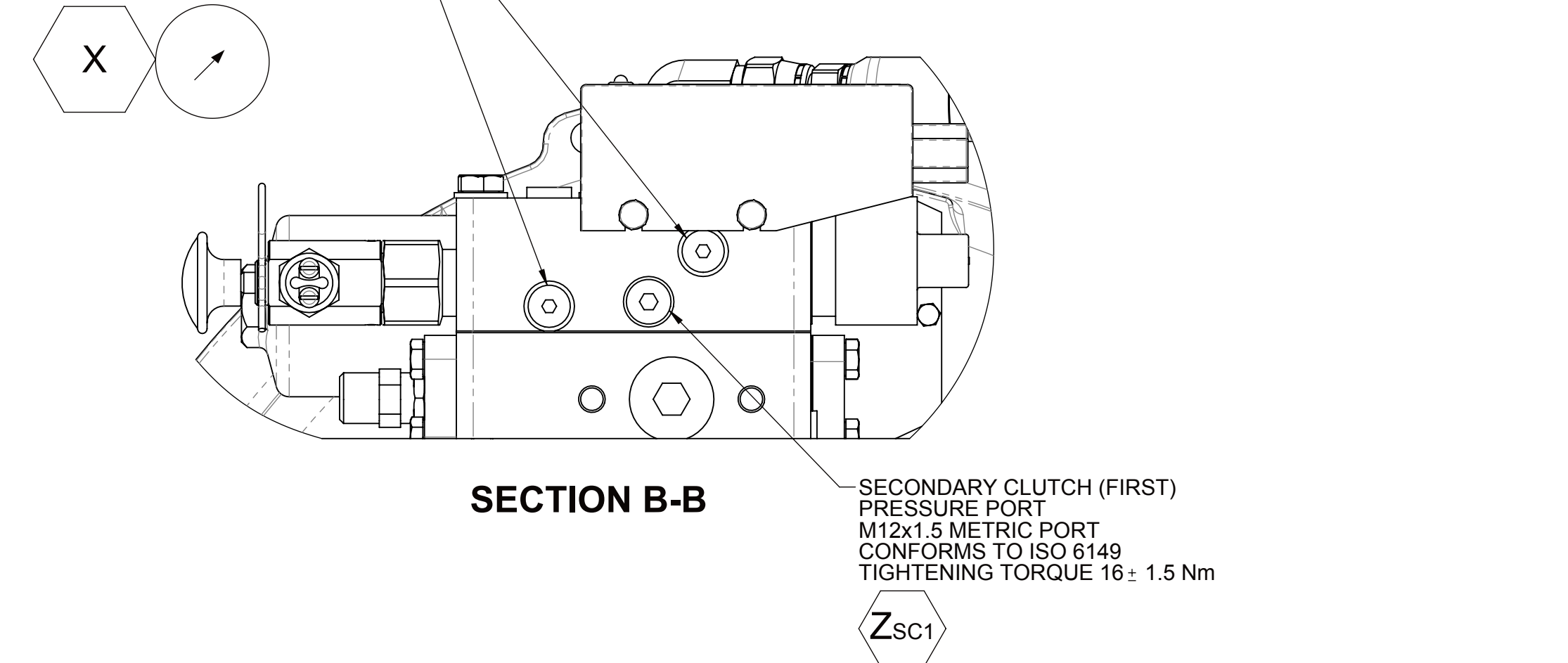




EQUIPMENT SHOWN:

- MGX-5114SC PER PX13160 ASSEMBLY
- SAE#1/SAE 355 CF-R-216 COUPLING
- GP VALVE WITH EC050 PROFILE MODULE
- PM13008 MOUNTED HEAT EXCHANGER GROUP
- LIVE PTO, SAE J744, SAE 101-2, 22-4



SECTION B-B



FIRST USE ASSEMBLY. FIRST USE MODEL. SIMILAR TO:	REQ#-CT	241#		THIRD ANGLE PROJECTION	MATERIAL:	06/27/2019	REV#	NDWFV-010884	06/27/2019
	WGT#	kg/m				CHS#	DATE		
METRIC NOTICE: THIS DRAWING CONTAINS PROPRIETARY INFORMATION AND IS NOT TO BE REPRODUCED OR TRANSMITTED IN ANY FORM OR BY ANY MEANS, ELECTRONIC OR MECHANICAL, INCLUDING PHOTOCOPYING, RECORDING, OR BY ANY INFORMATION STORAGE AND RETRIEVAL SYSTEM. WITHOUT THE WRITTEN PERMISSION OF TWIN DISC, INCORPORATED.	UNLESS OTHERWISE SPECIFIED DIMENSIONS ARE IN MILLIMETERS X.X X.X X.X X.X ALL DIMENSIONS ARE TO CENTER UNLESS NOTED OTHERWISE.			HEAT TREAT	DESCRIPTION	DATE: 06/27/2019 SCALE: 1:2 DRAWN BY: M.T. CHECKED BY: J.M. APPROVED BY: J.M.	 RACINE, WI 53403 - USA PX13254E		
	ALUMINUM 6061-T6 DIMENSIONS TO TOLERANCES PER ASME Y14.5M			INSTALLATION MSG-517HSC	DOWD A0	SHEET 1 OF 1	REV# 1054299 Rev A		