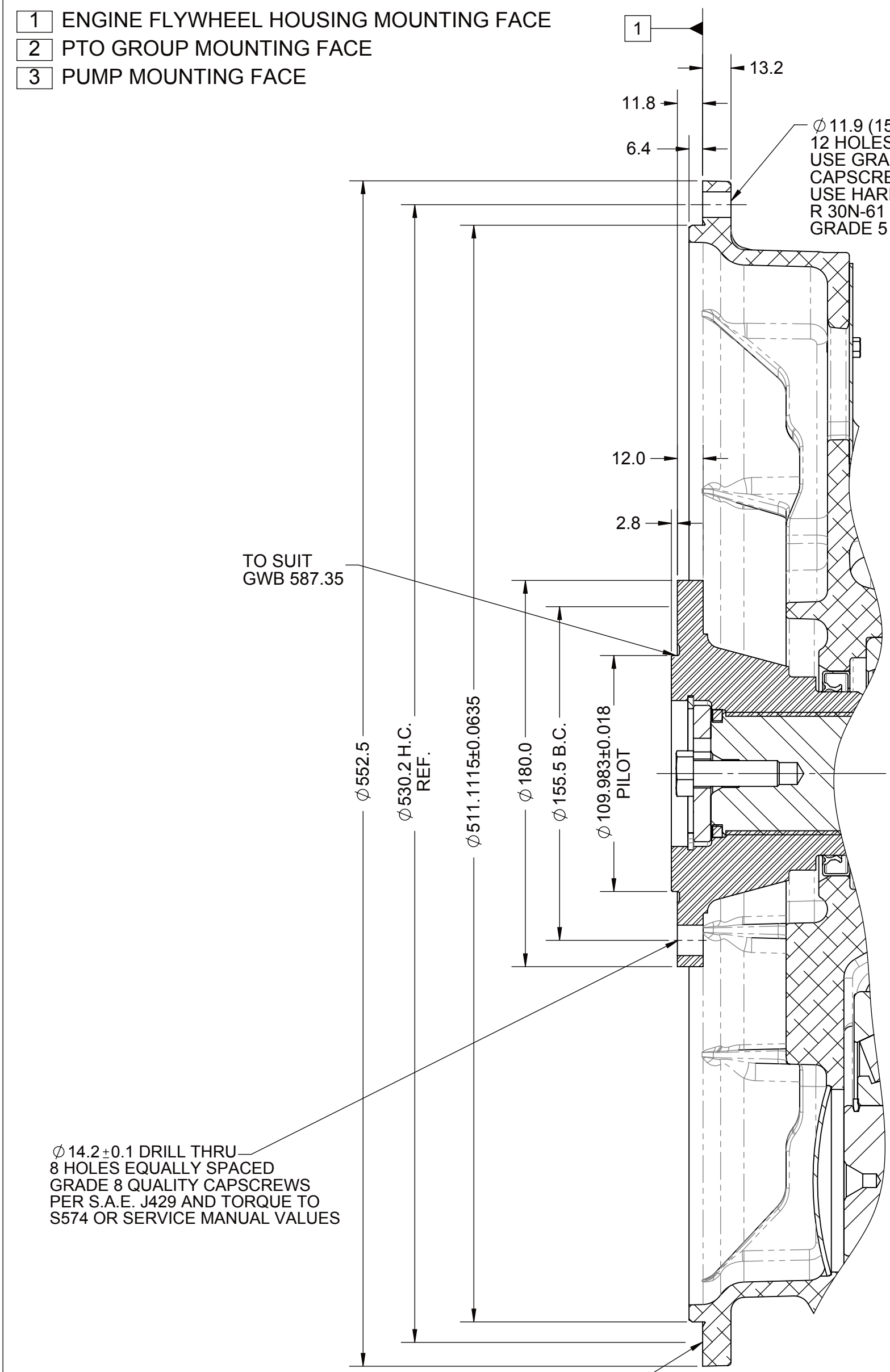
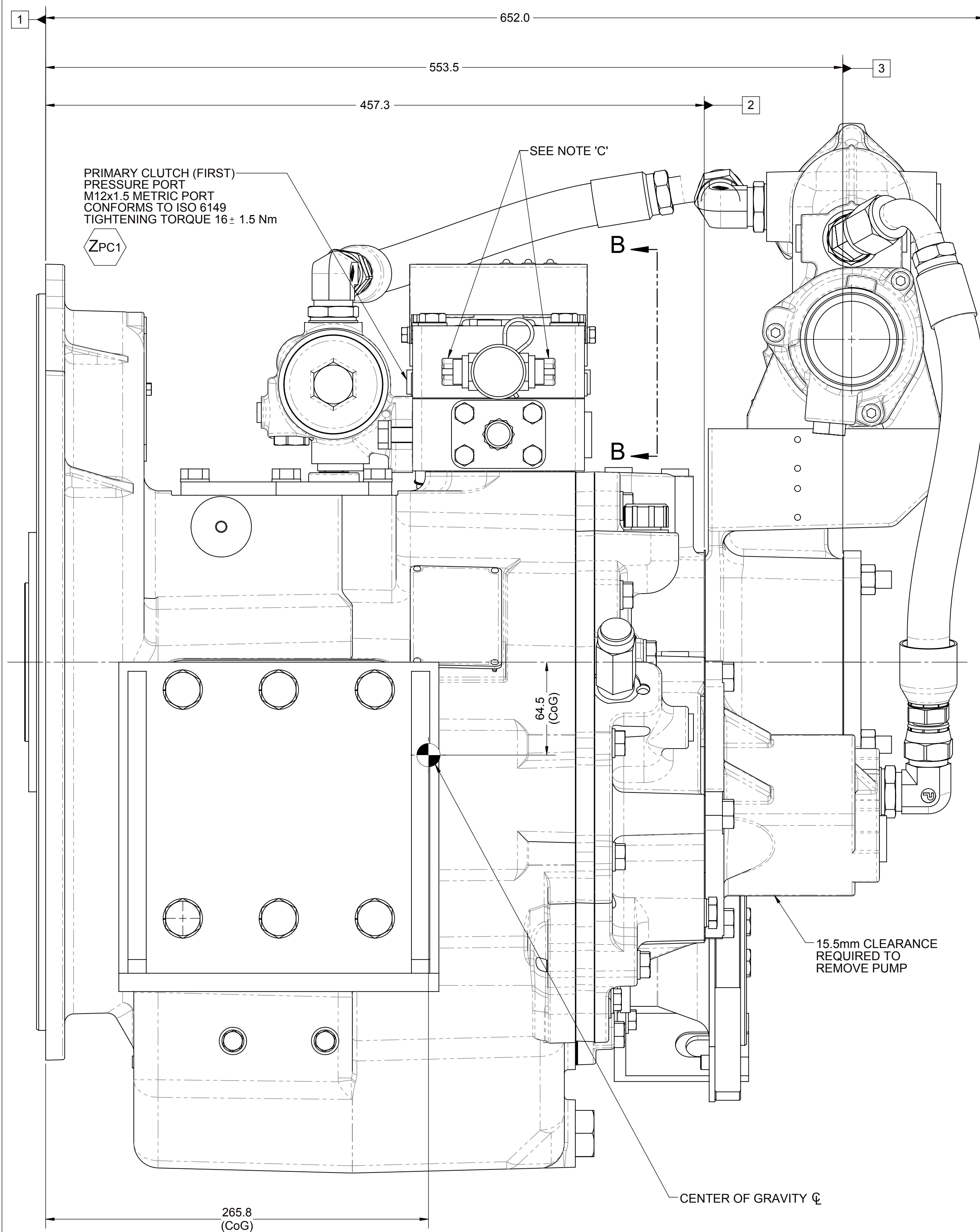


- 1 ENGINE FLYWHEEL HOUSING MOUNTING FACE  
2 PTO GROUP MOUNTING FACE  
3 PUMP MOUNTING FACE

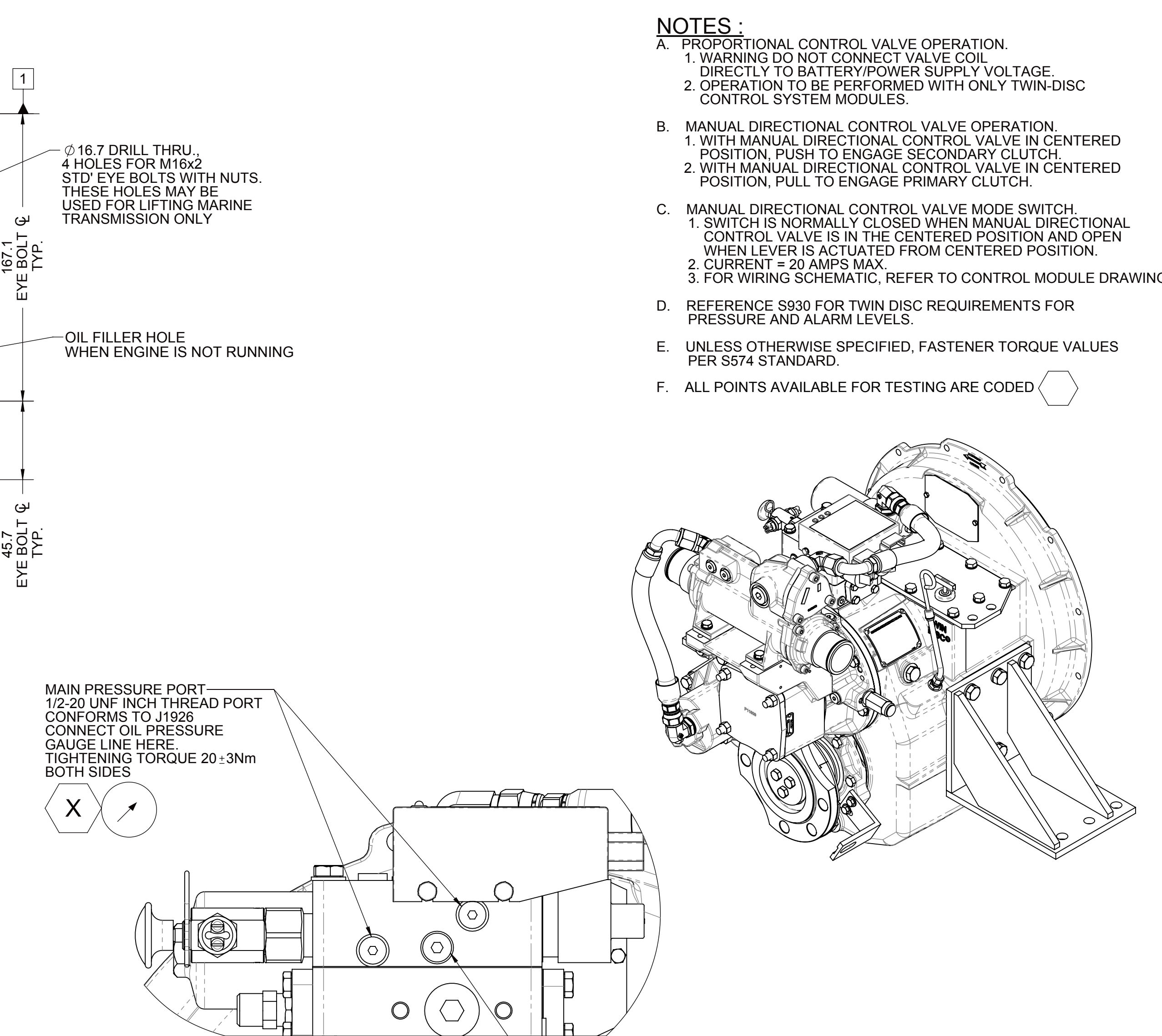
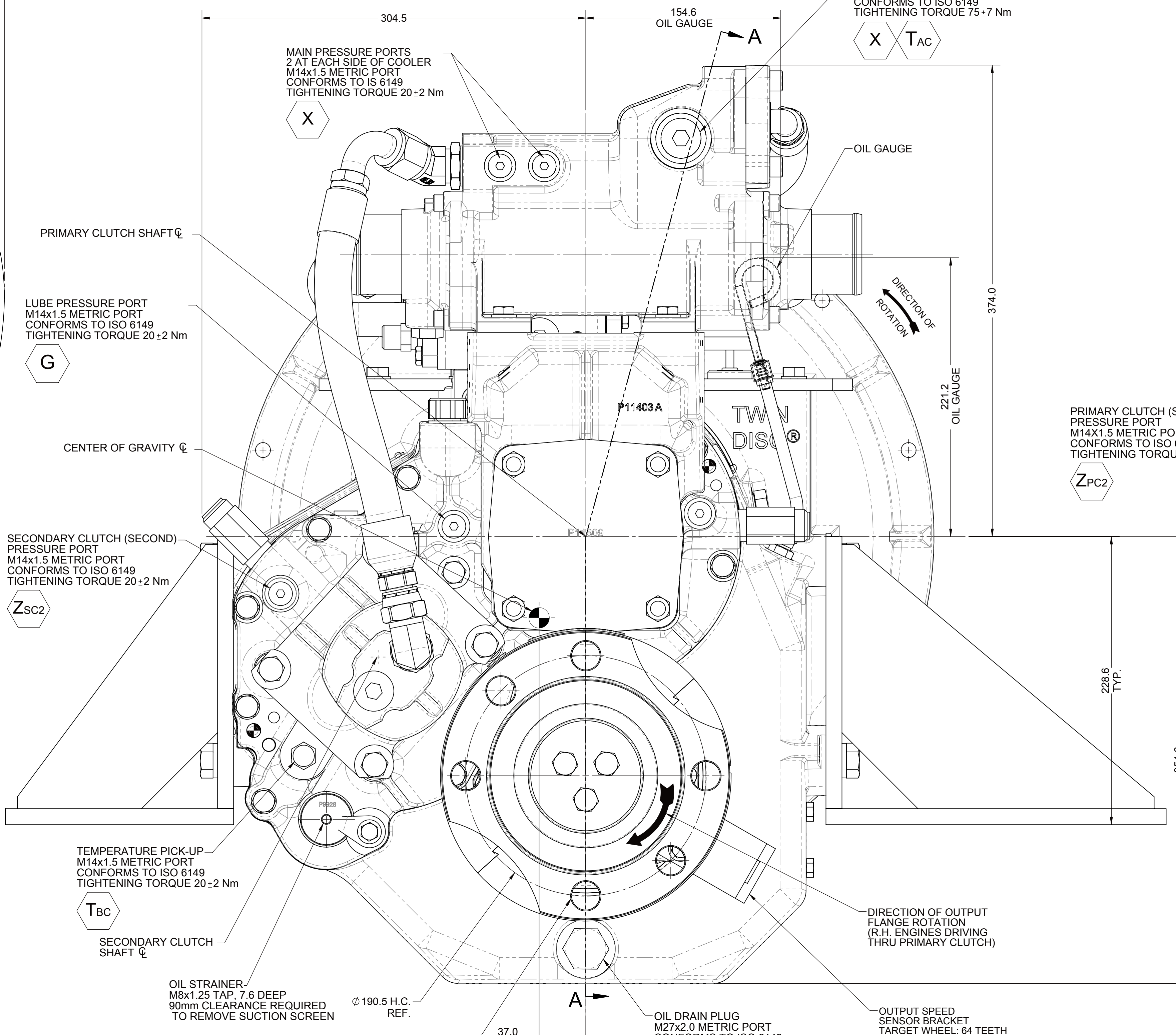
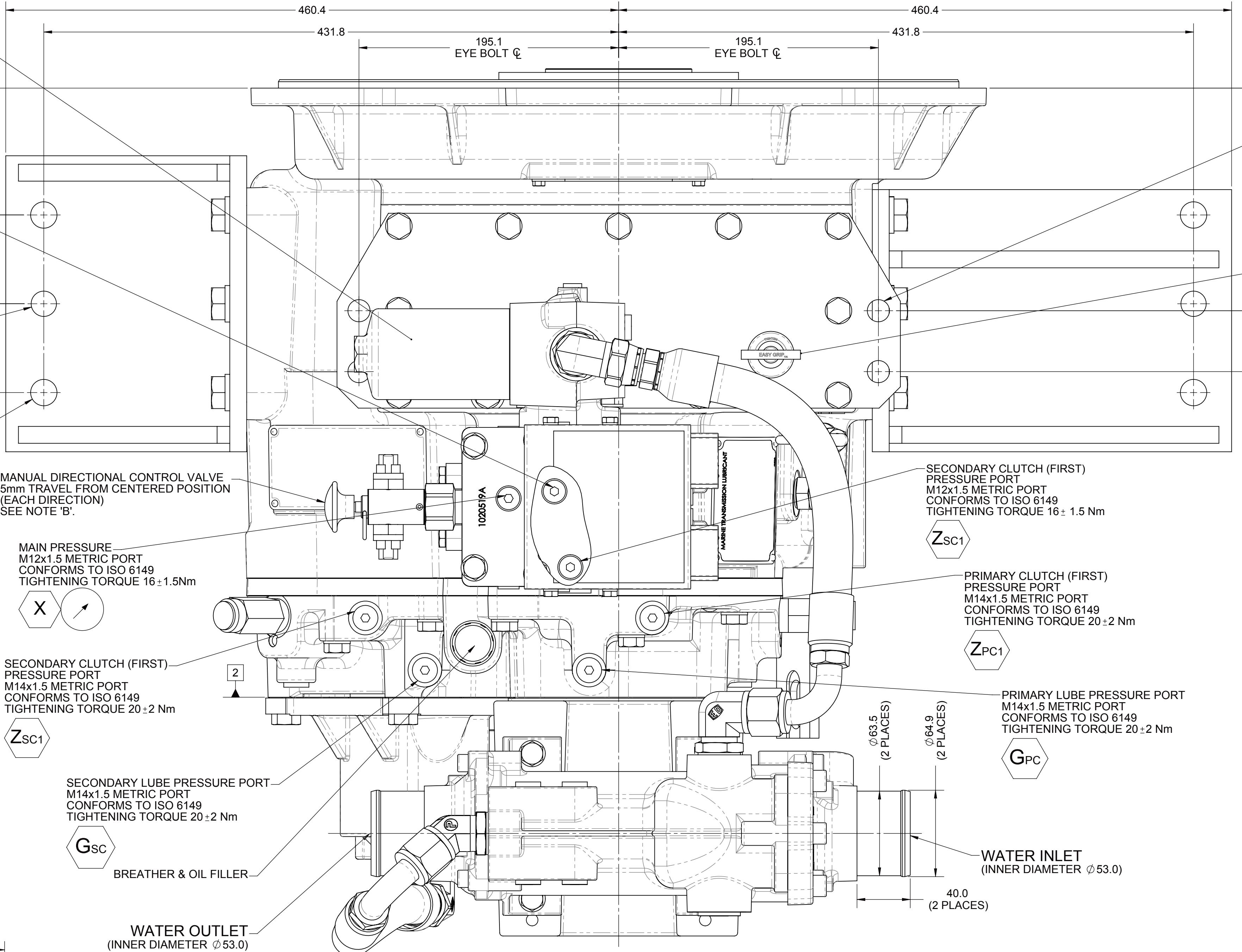


**SECTION A-A**

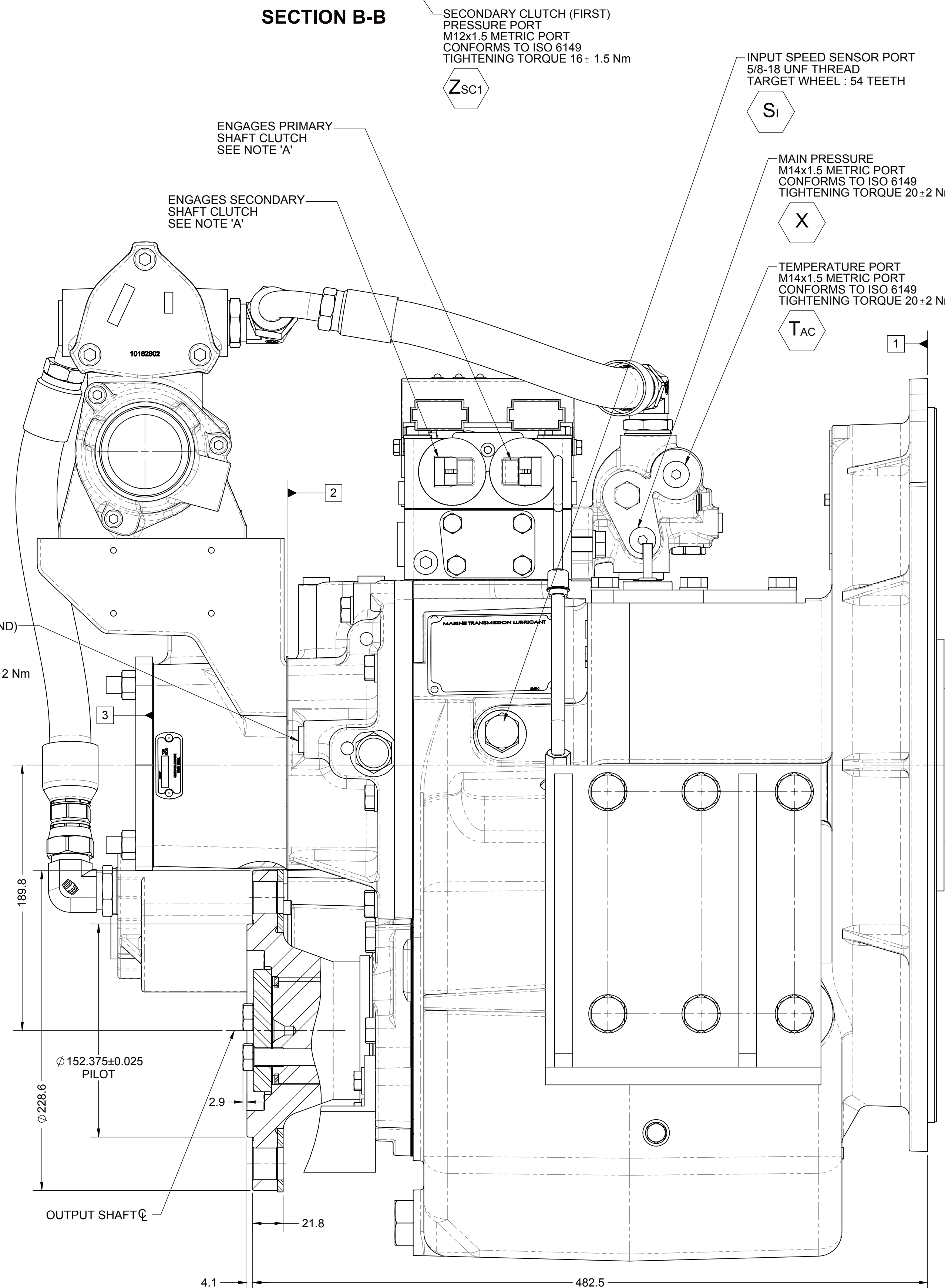


**EQUIPMENT SHOWN:**

- MGX-5114SC PER PX13160 ASSEMBLY
- SAE#1/GWB 587.35 INPUT FLANGE
- GP VALVE WITH EC050 PROFILE MODULE
- PM13008 MOUNTED HEAT EXCHANGER GROUP
- STANDARD MOUNTING BRACKETS - 1016428N



## SECTION B-B



- ## NOTES:
1. PROPORTIONAL CONTROL VALVE OPERATION.  
WARNINGS DO NOT CONNECT VALVE COIL DIRECTLY TO BATTERY OR LOW SUPPLY VOLTAGE.
  2. OPERATION TO BE PERFORMED WITH ONLY TWIN-DISC CONTROL SYSTEM MODULES.
  3. MANUAL DIRECTIONAL CONTROL VALVE OPERATION.
    1. WITH MANUAL DIRECTIONAL CONTROL VALVE IN CENTERED POSITION, PUSH TO ENGAGE SECONDARY CLUTCH.
    2. WITH MANUAL DIRECTIONAL CONTROL VALVE IN CENTERED POSITION, PULL TO ENGAGE PRIMARY CLUTCH.
  4. MANUAL DIRECTIONAL CONTROL VALVE MODE SWITCH.
    1. SWITCH IS NORMALLY CLOSED WHEN MANUAL DIRECTIONAL CONTROL VALVE IS IN THE CENTERED POSITION AND OPEN WHEN LEVER IS ACTUATED FROM CENTERED POSITION.
    2. CURRENT 20 AMPS.
  5. FOR WIRING SCHEMATIC, REFER TO CONTROL MODULE DRAWING.
  6. REFERENCE 9830 FOR TWIN DISC REQUIREMENTS FOR PRESSURE AND ALARM LEVELS.
  7. E. UNLESS OTHERWISE SPECIFIED, FASTENER TORQUE VALUES PER S574 STANDARD.
  8. F. ALL POINTS AVAILABLE FOR TESTING ARE CODED
- 